

ANGLIA Multimedia CD ROM



World Population **ATLASFILE**

Education Version

YOU SHOULD READ CAREFULLY THE FOLLOWING TERMS AND CONDITIONS BEFORE USING THIS MULTIMEDIA WORK. BY INSTALLING THIS WORK YOU SHALL BE DEEMED TO HAVE ACCEPTED THESE TERMS AND CONDITIONS.

LICENCE

- 1 ANGLIA MULTIMEDIA LIMITED grants you, the Licensee, a non-exclusive licence to the CD ROM multimedia work ("the CD ROM") for single machine use. It is licensed for educational use as specified in Paragraph 2 below. For multiple purchasing for the same site; contact SCA (Anglia Multimedia), PO Box 18, Benfleet, Essex SS7 1AZ, Telephone and Fax: 01268 755811.
- 2 If you are a school user, you may copy only text, photographs and graphics from the CD ROM for use in your own school projects; provided that such copies shall not be made available to any other persons or schools. The education version of the disc is licensed to be used on up to 10 machines at any one time in educational establishments.
- 3 Except as provided for in 2 above you may not record store or otherwise transfer any of the CD ROM in whole or part to or onto any other storage device disc or network of whatever kind without having the necessary licence.

WARRANTY

- 1 Limited Warranty. Subject to any other provisions in this Agreement, Anglia Multimedia Limited warrants to you the original Licensee, that the device on which the CD ROM is recorded will be free of defects in material and workmanship under normal use for a period of ninety (90) days from purchase, and that the CD ROM will perform substantially in accordance with the user guide for a period of ninety (90) days from purchase. Anglia Multimedia Limited's sole responsibility under this warranty will be, at its option, (1) to use reasonable efforts to correct any defects that are reported to it within the foregoing warranty period or (2) to replace the disc. Anglia Multimedia Limited does not warrant that the CD ROM will be error free, nor that all the program errors will be corrected.
- 2 Limitations on Remedies. Anglia Multimedia's liability arising out of or in connection with the CD ROM, shall not exceed the purchase price of the CD ROM.

IN NO EVENT SHALL ANGLIA MULTIMEDIA LIMITED BE LIABLE FOR SPECIAL, INCIDENTAL TORT OR CONSEQUENTIAL DAMAGES (INCLUDING ANY DAMAGES RESULTING FROM LOSS OF USE, LOSS OF DATA, LOSS OF PROFITS OR LOSS OF BUSINESS) ARISING OUT OF OR IN CONNECTION WITH THE PERFORMANCE OF THE CD ROM EVEN IF ANGLIA MULTIMEDIA LIMITED HAS BEEN ADVISED ON THE POSSIBILITY OF SUCH DAMAGES.

WARRANTY DISCLAIMER

- 1 Anglia Multimedia Limited makes no warranties, express or implied, including without the limitation the implied warranties of merchantability and fitness for a particular purpose, regarding the software. Anglia Multimedia Limited does not warrant, guarantee or make any representations regarding the use of the results of the use of the software in terms of its correctness, accuracy, reliability, currentness or otherwise. The entire risk as to the results and performance of the software is assumed by you.
- 2 In no event will Anglia Multimedia Limited, its directors, officers, employees or agents be liable to you for any consequential, incidental or indirect damages (including damages for loss of business profits, business interruption, loss of business information, and the like) arising out of the use or inability to use the software.

OWNERSHIP

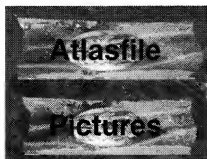
Anglia Multimedia Limited owns and will retain all title copyright trademark and other proprietary rights in and to the CD ROM. You obtain only those rights provided in the above licence.

Photographs © 1996 Anglia Multimedia Ltd. Windows® 3.1 Windows® 95 are registered trademarks of Microsoft Corporation. All registered trademarks are acknowledged.

Text © Collins-Longman Atlases
Statistics and Digital Map Data © Harper Collins
Publishers © 1996 Anglia Multimedia Ltd.

Contents of the CD ROM

There are two main areas on the *World Population* CD ROM.



The *Atlasfile* offers comprehensive choropleth mapping facilities of world population data.

A series of eighty *pictures* provides photographic support for the data.

In addition, there are two other important areas which are available through the directory structure of the CD ROM:

- There is an extensive set of *activity sheets* which are stored on the CDROM. They can be printed out on paper.
- The data which is used for the choropleth mapping is available in a variety of formats for loading into your own data-handling software.

Using the CD ROM

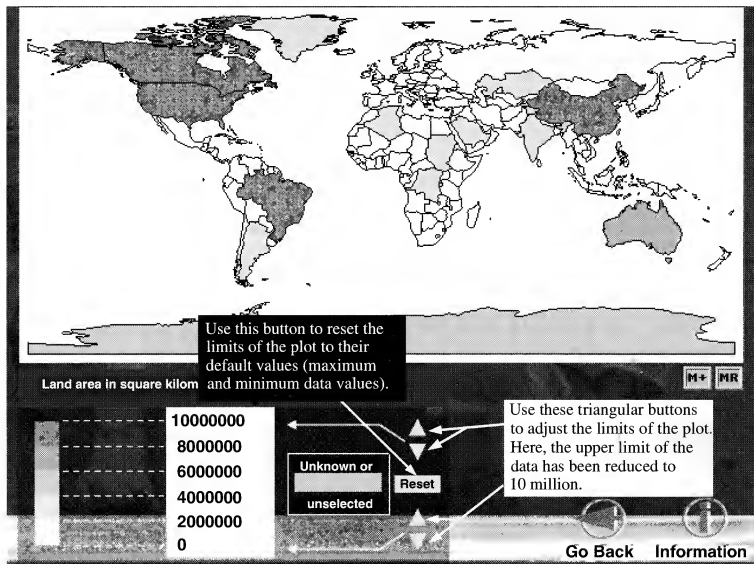
The main routes through the CD ROM require the user to click with the mouse on icons such as those shown above. There is extensive use of a "Go Back" icon which retraces the path down which the user has travelled.



Information and help are available by clicking on this icon with the mouse. This also permits some control over the use of sound and memory.

ATLASFILE CONTROLS

Once an Atlasfile has been chosen, it will plot the relevant choropleth map using the full set of data. Sometimes (as with population data) one or two countries set the limits in a way which pushes the majority to be plotted in one colour. Whenever a narrower range needs expanding, the boundary limits can be adjusted (and subsequently reset) as shown below.



Getting Started

This CD ROM is designed to run on the following computers

MPC

IBM compatible minimum 386SX/33MHz
(486SX/25MHz or above recommended)
4 Mb RAM
Sound Blaster compatible sound card
Double speed 300 kps CD ROM drive
Windows® 3.1 or later (inc. Windows® 95)
Mouse
VGA display
DOS 5.0

Macintosh™

Macintosh™ or Power Macintosh System 7™ or above
4 Mb RAM, 8 Mb recommended
Double speed 300 kps CD ROM drive
256 colour, 640x480 display

Acorn

Risc computer (A-Series, Risc PC or Media Range)
RISC OS 3.1 or above
4 Mb RAM
Double speed 300 kps CD ROM drive
Monitor supporting 640x480 display

Installation

MPC (IBM Compatible)

The CD ROM will work with a 640x480 pixels 256 colour display.

To install this CD ROM on an IBM or compatible:

- 1 Windows® 95: From the **Start** menu, select **Run...**
Windows® 3.1: From the Program Manager's **File** menu, select **Run...**
- 2 Type **D:\SETUP.EXE** and press **Return** or click on **OK**. (Substitute another drive letter if the CD ROM is not in drive D.)
- 3 Select **Install**. The system will then set up a Windows Group called **Anglia Multimedia**.

You can also use the Windows® 95 quick install feature available from the **Settings** option of the Main Menu. Consult your Windows® 95 manual for further details.

Running the Program

Windows® 95: Click on the **Start** icon and access the **Programs** submenu. Then, from the **Anglia Multimedia** submenu click on the **World Population** icon.

Windows® 3.1: In the Program Manager, open the **Anglia Multimedia** group and double-click on the **World Population** icon.

For additional information, please consult the **README.TXT** file within the PC directory.

N.B. The program may produce various prompts before running connected with the **Resume** and **Save Status** features described in the next section.

Apple™ Macintosh™

The CD ROM will operate in a 640x480 pixel 256 colour display mode. No special installation is normally necessary. Just insert the CD ROM and wait for the **World Population** icon to appear on your desktop. Double-click on this icon to open its window, then double-click on the **Run World Population** icon to run the program.

Acorn A Series & Risc PC

Insert the CD ROM and click on the appropriate CD ROM icon on the left of the iconbar. Run **!WorldP** on the root of the CD ROM.

If you have any problems, open the **ACORN** folder and run **!CDFAST** and **!SYSAUTHOR** before running **!WorldP**. If you *still* have problems, run the **!SETUP** application.

The disc has been designed to look at its best when run in 640x480, 256 colour mode (Mode 28). For further information, see the **!README** file within the **ACORN** folder.

N.B. The program will produce various prompts before running in connection with the **Resume** and **Save Status** features described in the next section. It is advisable to read that section before proceeding further.

Free Technical Support in the U.K.

Phone 0161 476 2924 Monday-Friday 9am-5:30pm

Registering your new product qualifies you for FREE technical support.

Before calling Technical Support, please follow these steps:

- 1 Check your manual thoroughly.
- 2 Gather all information that applies to the problem.
- 3 Write down all the steps you have taken to solve the problem.
- 4 Be sure you know your hardware configuration, operating system version, memory, monitor type, etc.

Resume and Save Status Features

This CD ROM is designed to automatically retain your status between each use. This works differently depending on the machine you are using:

MPC

With the exception of your first use of *World Population*, each time you run the program you will be asked whether you wish to resume from your previous session. If you select **YES**, you will return to *World Population* with everything as you left it. Otherwise, the program will start from the beginning.

It is also possible to save your current status at any point. To save your status: Click on the right hand mouse button and select **Save Status** to save a status file to disc. A default directory created on your hard disc is automatically selected for the convenient storage of status files. To load a status file: Click on the right hand mouse button. Select **Load Status** and select a status file to load.

Macintosh™

The **Resume** and **Save Status** features are not available for Macintosh™ on this release of *World Population*.

Acorn A Series & Risc PC

Status and resume files are normally held in a special folder called the **Extras Folder**.

When you first run **!WorldP**, the program will ask whether you wish to create an **Extras Folder**. Select **YES** and drag the icon into a directory or onto a disc. Alternatively, you may create an **Extras Folder** at a later point: Click on the **Menu** button, switch to desktop execution (or press F2). Press the **Menu** button again and select **Create Extras Folder** and drag the icon into a directory or onto a disc.

Once an **Extras Folder** has been created, each time you run **!WorldP** you will be asked whether you wish to resume from your previous session. If you select **YES** you will return to *World Population* with everything as you left it. Otherwise, the program will start from the beginning.

It is also possible to save your current status at any point. To save your status: Click on the **Menu** button. Select **Save Status** from the menu. Delete the default name back as far as (but not including) the rightmost '.' and enter a name for your file. Click on **OK** to save the file within the **Extras Folder** or drag the icon into a directory or onto a disc. To load a status file: Click on the **Menu** button. Select **Load Status** and select a file from the menu of files within the **Extras Folder**. Alternatively, drag a status file onto the program's main window.

N.B.

- i) When re-running the program on the Acorn it is important to ensure that the filer has already 'seen' the **Extras Folder**. If you have problems, double click on the **Extras Folder** to ensure that it is registered.
- ii) For class, multi-platform or multi-user applications please consult the **!README** file on the CD ROM.

Copying Text and Graphics

You can save text and pictures from the CD ROM for educational purposes as outlined in the licence. There are two main opportunities for using this facility. When using the Atlasfile, the choropleth map and the legend can each be saved separately. When using the slide show, any of the photographs (in their respective sizes) can be saved as can the text of the caption. This works differently depending on the machine you are using:

MPC

Place the cursor on the object you want to copy. Click the right hand mouse button and select **Save Item** from the menu. Enter a file name for the object you wish to save and select a directory or disc in which to save it.

Macintosh™

Place the cursor on the object you want to copy. Hold down the **Command/Apple** key and click on the object you want to save. Use the standard filer window to specify a file name for the object and where you wish to save it.

Acorn

Click the **Menu** button, switch to desktop execution (or press **F2**). Place the pointer over the object you want to copy, press the **Menu** button and select **Save item**. Save the object by dragging the icon into a directory or onto a disc.

Activity Sheets

This disc comes with activity sheets which can be printed out. The sheets include a range of activities, some of which require access to the CD ROM and others which can be completed without using a computer. The activity sheets are held within the **ACTSHTS** directory on the root of the CD ROM.

The file **CONTENTS** lists the activity sheets. Follow the instructions below to view or print the contents of an activity sheet:

MPC

- 1 Select **File** from the Program Manager (Windows® 3.1) or click on the **Start** button (Windows® 95) and then select **Run**.
- 2 Now type **D:\PC\ANGPRT.EXE** (if your CD ROM is drive D) and press **Return** or click **OK**. The Page Printer window will open. This allows you to view or print the activity sheets on an MPC.
- 3 Click on **File** and then open the **ACTSHTS** folder within the CDROM. A list of activity sheets will be displayed. Select the activity sheet you require.
- 4 To print an activity sheet, select **Print** from the Page Printer menu.

N.B. Users of the Oak 'Draw' program may use it to edit or view the worksheets directly.

Macintosh™

- 1 Run **Page Printer** from the **World Population** folder window.
- 2 Click on **File** and then open the **ACTSHTS** folder. A list of activity sheets will be displayed. Select the activity sheet you require.
- 3 To print an activity sheet, select **Print** from the menu.

Acorn

Open the **ACTSHTS** folder to reveal the activity sheets. Double click on an activity sheet to view it. Print from !Draw or drag the file direct to the printer manager.

The sheets have been produced in !Draw format. You may amend the sheets as you see fit to suit your own requirements. See the RISC OS User Guide for full details on how to use !Draw.

Data on this disc

The data held within the atlasfile is available on the disc in many formats that can be exported into database and spreadsheet software to allow users to make full use of the information.

The data can be found within a directory called "**DATA**" on the root of the CD ROM.

MPC

The data is available in formats that can be exported into database and spreadsheet software running under Windows.

Formats are:

Key Plus - the popular database software by Anglia Multimedia
CSV (Comma Separated Value) - suitable for import into spreadsheets such as Microsoft Excel and most database software on the PC.
DIF (Data Interchange Format) - another popular common format that many spreadsheets and databases will recognise. It is also the format accepted by palmtop computers and can be transferred using appropriate software.

Macintosh™

The data is available in formats that can be exported into database and spreadsheet software running on the Apple Macintosh.

Formats are:

ClarisWorks Database - popular integrated software by Claris. The file is in database format.
CSV (Comma Separated Value) - suitable for import into spreadsheets such as Microsoft Excel.
DIF (Data Interchange Format) - another popular common format that many spreadsheets and databases will recognise. This file format should be used when wanting to open the file automatically in the spreadsheet module of ClarisWorks or directly into databases such as FileMaker Pro. It is also the format accepted by palmtop computers and can be transferred using appropriate software.

Acorn

The data is available in formats that can be exported into most database and spreadsheet software running on Acorn machines.

Formats are:

Key Plus / Datapower - popular database software by Anglia Multimedia and Iota. The file will run directly in either database if you click on it. This file is also compatible with Anglia Multimedia's Key Calc spreadsheet.
CSV (Comma Separated Value) - suitable for import into spreadsheets such as Eureka and most database software on the Acorn.
DIF (Data Interchange Format) - another popular common format that many spreadsheets and databases will recognise. It is also the format accepted by palmtop computers such as the Acorn PocketBook and can be transferred using appropriate software.

Datafile field names

The activity sheets acknowledge the fact that the data is provided in the form of a datafile as well as via the choropleth mapping system. The following table will enable the user to choose the correct set of data to view when using the activity sheets. If, when importing data into your own data handling software, a field name is requested, then use of the datafile field name listed below, will ensure that the activity sheets will relate directly to your new datafile.

ATLASFILE FIELD NAME

LAND AREA
 POPULATION 1976
 POPULATION 1995
 POPULATION 2025
 POPULATION DOUBLING
 POPULATION DENSITY
 BIRTHRATE
 DEATHRATE
 POPULATION GROWTH
 INFANT MORTALITY
 LIFE EXPECTANCY
 PERCENTAGE OF CHILDREN
 PERCENTAGE OF ADULTS
 PERCENTAGE OF OLDER PEOPLE
 PERCENTAGE IN TOWNS (1976)
 PERCENTAGE IN TOWNS (1991)
 GROWTH IN TOWN DWELLERS
 EMPLOYMENT IN PRIMARY INDUSTRIES
 EMPLOYMENT IN SECONDARY INDUSTRIES
 EMPLOYMENT IN THE SERVICE SECTOR
 GNP PER PERSON
 FOOD CALORIES EATEN PER DAY
 NUMBER OF PEOPLE PER DOCTOR
 PEOPLE WITH SAFE DRINKING WATER
 PRIMARY SCHOOL EDUCATION
 FEMALE EDUCATION
 LITERACY - READING AND WRITING
 TELEVISION WATCHING

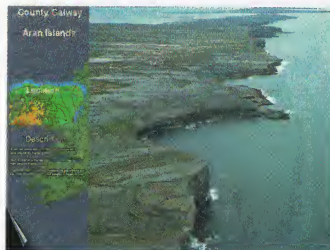
DATAFILE FIELD NAME

AREA
 POPULATION1976
 POPULATION1995
 POPULATION2025
 DOUBLING TIME
 POP DENSITY
 BIRTHRATE/1000
 DEATHRATE/1000
 %POP GROWTH
 INFANT MORTAL
 LIFE EXPECT
 %POP AGE 0 - 15
 %POP AGE 15 - 60
 %POP AGE 60+
 %POP URBAN1976
 %POP URBAN1991
 %CHANGE URBAN
 %EMP PRIMARY
 %EMP INDUSTRY
 %EMP SERVICES
 GNP/CAPITA1991
 CALORIES/DAY
 POP/DOCTOR
 %POP/SAFEWATER
 %PRIMARYSCHOOL
 %FEMALESCHOOL
 %ADULTLITERACY
 TV/1000

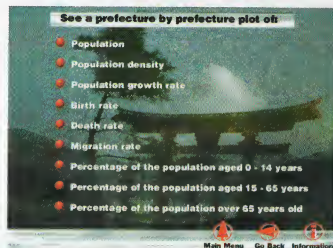
CREDITS

<i>Production team:</i>	<i>Quentin Thurtle - authoring Caroline Field - photograph preparation</i>
<i>Research and development:</i>	<i>David Bevan, Quentin Thurtle, Gareth Davies, Caroline Field Richard Welbourne - captions</i>
<i>Data:</i>	<i>Linda Riley - compilation Collins Longman - collation</i>
<i>Graphic design:</i>	<i>Neil Rowbottom</i>
<i>Technical team:</i>	<i>Dr. Paul Maguire - software Ben Glover - image mastering</i>
<i>Narration:</i>	<i>Bryony Pritchard</i>
<i>Photography:</i>	<i>Caroline Field, Peter Stibbons, Theo Stibbons, David Bevan, Quentin Thurtle</i>
<i>Activity sheets:</i>	<i>Robert Munro, Alastair Robinson - authors Linda Riley - compilation</i>

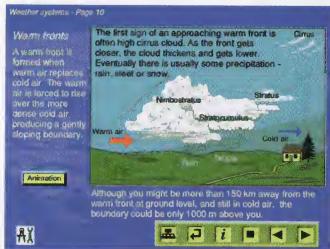
OTHER SELECTED TITLES FROM ANGLIA Multimedia



BRITISH ISLES *From the Air*



Japan ATLASFILE



Understanding ENERGY



The World's WEATHER

For full catalogue ring/fax 01268 755811

