

L.ZONE

Hybrid CD-ROM for Macintosh & Windows 3.1



How to Enjoy **L-ZONE** —for Macintosh—

★ Setting Up

Check the settings on your Macintosh following the steps listed below.

① Install [QuickTime 1.6.1]

From the hard disk icon of the start-up disk open your System Folder. Verify that [QuickTime 1.6.1] is in the Extensions folder of your System Folder. If it is not, copy [QuickTime 1.6.1] into the Extensions folder.

② Adjust [Memory]

Open [Memory] in your Apple menu's control panel and set [virtual memory] at "off" and [32-bit address] at "on"

* Some models don't have a [32-bit address] on-off item. In that case, make the [virtual memory] adjustment only.

③ Adjust [Monitors]

Select [Monitors] from [Control Panels] and set it at the 256-color mode.

* If any of the above operations ①—③ is performed, be sure to restart your Macintosh.

④ Ensure an Adequate Area of Memory

Select [About This Macintosh] from Apple menu and verify that [Largest Unused Block] is [4,000K] or more.

* If [Largest Unused Block] is less than [4,000K], increase memory or quit unnecessary applications and close as many display windows as possible to ensure a sufficient [Largest Unused Block].

★ Starting Up

When you put the compact disk in the CD-ROM drive, two icons [L-ZONE] and [Read Me] will be displayed. Double click the [L-ZONE] icon to start up. (fig. 1)

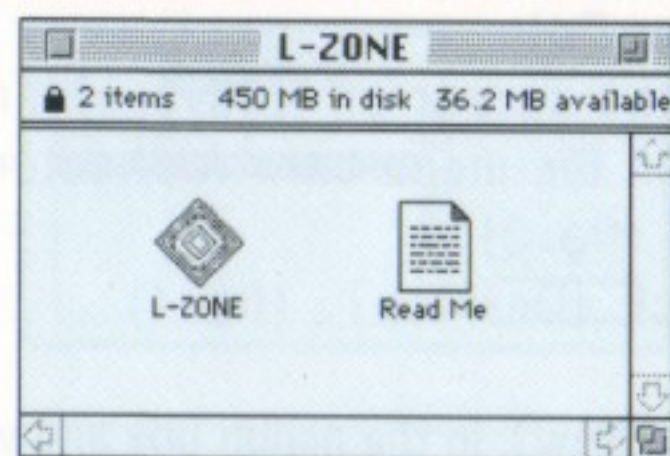
* If you are using the name [L-ZONE] for a hard disk or other item, temporarily change its name.

* In [Read Me] you will find more detailed information about these and other matters. If *L-ZONE* does not work as it should, double click this icon.

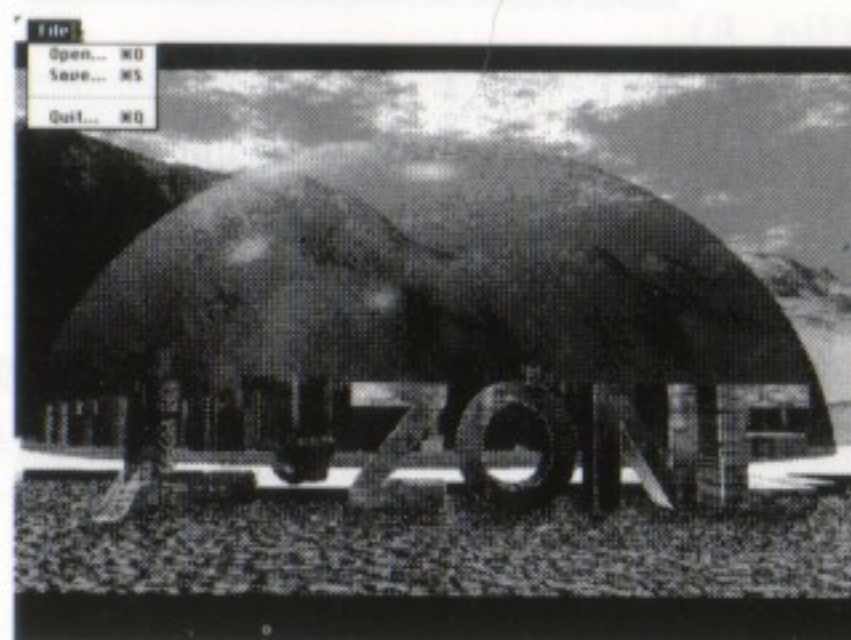
★ Operation of the Menu Bar

By using the menu bar at the top of the *L-ZONE* display you can save or input data. The menu bar is not normally visible while *L-ZONE* is in operation, but if you bring the cursor to the top of the display, it will appear. (fig. 2)

* The menu bar can be made to appear only when the cursor is displayed on the screen.



(fig. 1)



(fig. 2)

How to Enjoy *L-ZONE* —for Macintosh—

A. Saving Data

① Set the cursor on [Save...] and select it from [File] in the menu bar. A directory dialog box will appear. (fig. 3)

Now click [Desktop]. (fig. 4)

② Click [New] in the dialog box and when you have read in [L-ZONE SAVE], click [Create]. (fig. 5)

③ When you click [Save...], [L-ZONE Data 1] will be saved in the newly made [L-ZONE SAVE] folder. (fig. 6)

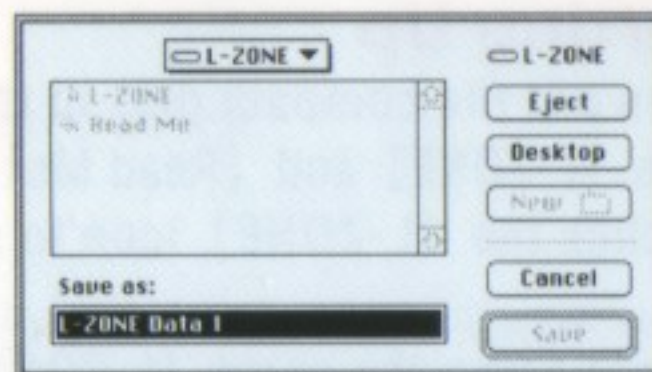
B. Inputting Data You Saved

① Select [Open...] from [File] in the menu bar. A dialog box will appear. (fig. 7)

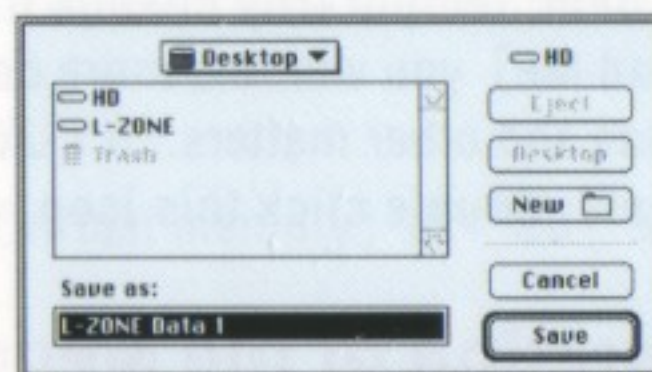
Now click [Desktop] and from the list in the dialog box select the [L-ZONE SAVE] folder. (fig. 8)

② Click the data you wish to input. (fig. 9)

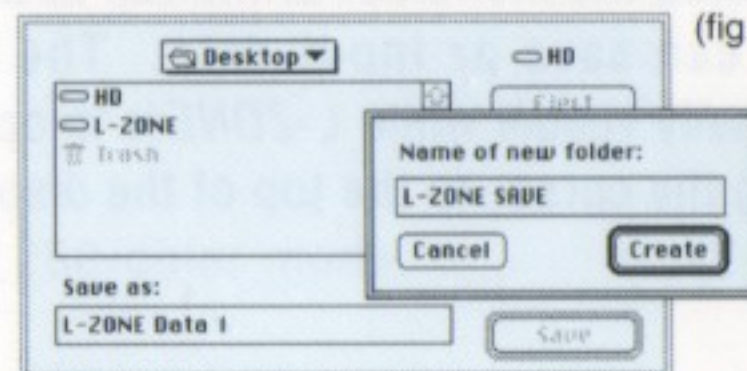
You will commence *L-ZONE* from the position that you saved.



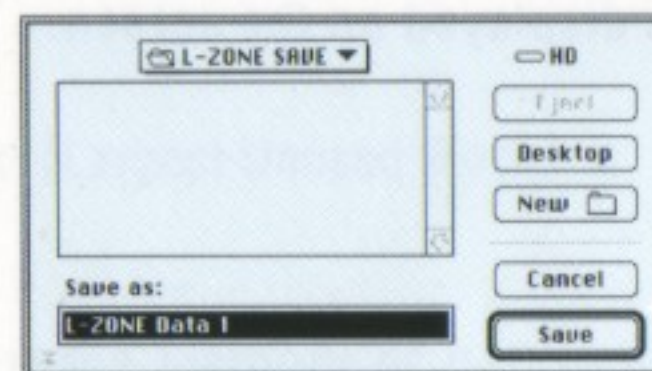
(fig. 3)



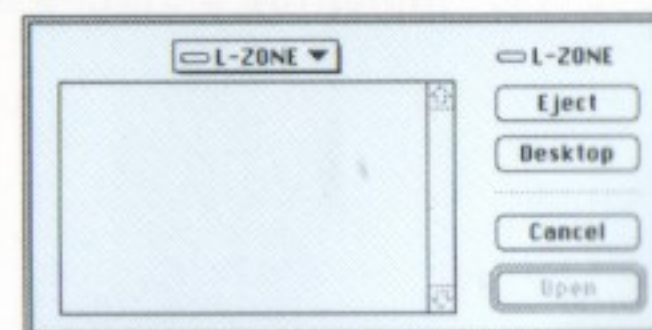
(fig. 4)



(fig. 5)



(fig. 6)



(fig. 7)

C. Quitting

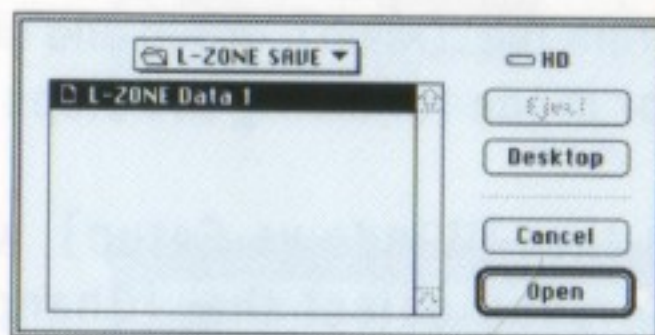
Select [Quit] from [File] in the menu bar. A dialog box will appear. (fig. 10)

If you click [OK], *L-ZONE* will terminate and you will return to your desktop. (fig. 11)

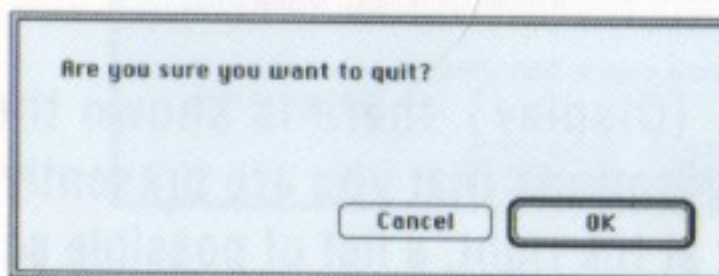
* If you have followed the steps outlined here for saving *L-ZONE* data, a folder named [L-ZONE SAVE] has been created in your desktop. As you will need this folder when you return to *L-ZONE*, do not inadvertently put it in the Trash.



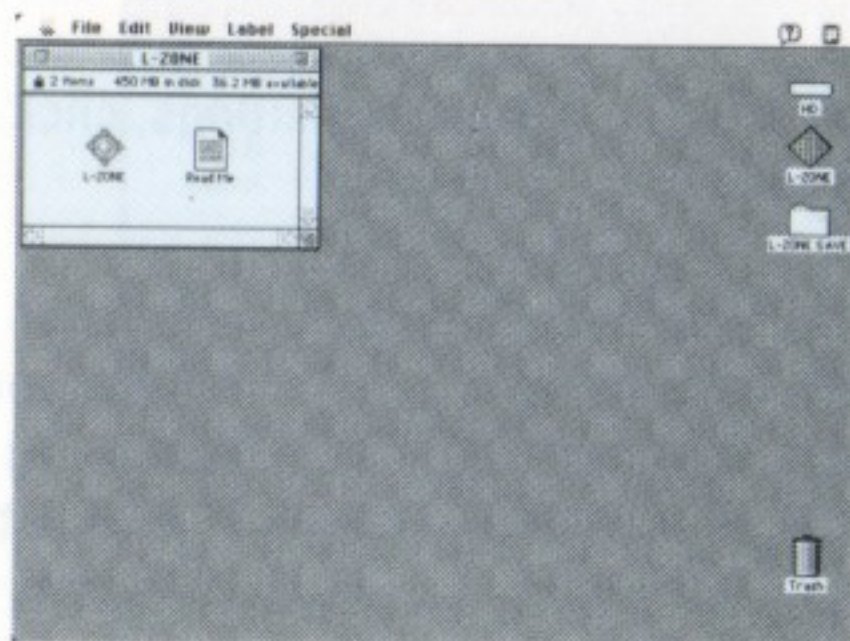
(fig. 8)



(fig. 9)



(fig. 10)



(fig. 11)

How to Enjoy **L-ZONE** –for Windows 3.1–

★ Setting Up

Follow the steps described below to set up your hard disk.

(1) Adjust Display Settings

If Windows is set for other than 256 colors (16 colors, 65,000 colors or 16,000,000 colors), select [Windows Setup] from the [Main] group and change the setting to the 256-color mode following the steps described below.

① Open the [Windows Setup] window and from the [Setup] menu select the [Change System Settings] command. (fig. 1)

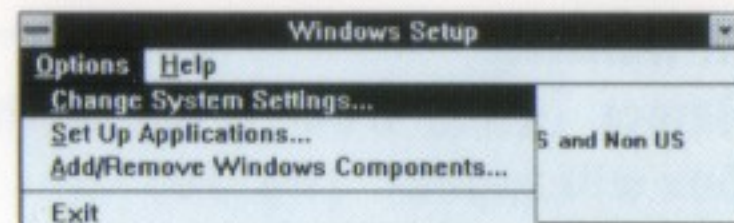
② In [Display] there is shown the resolution and color configurations that you are presently using. If you click the arrow at the right, a list of possible settings will be displayed. From this list select [640x480 256 colors]. (fig. 2)

③ After changing the settings, click [OK] in the dialogue box.

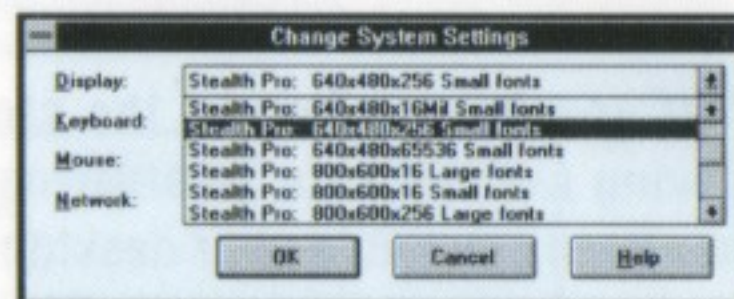
* If you have previously used this resolution setting, a dialogue box will appear asking if you really want to install a new driver. Click [Current]. (fig. 3)

* If you are using this resolution setting for the first time, you may be asked to put the Windows system disk in the disk drive. If so, put in the disk and click [OK]. (fig. 4)

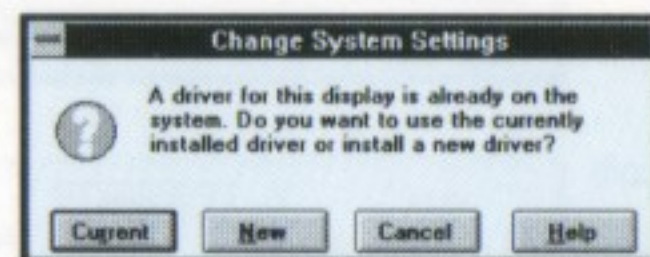
④ When a dialogue box is displayed asking you to verify the change in settings, click [Restart Windows]. (fig. 5)



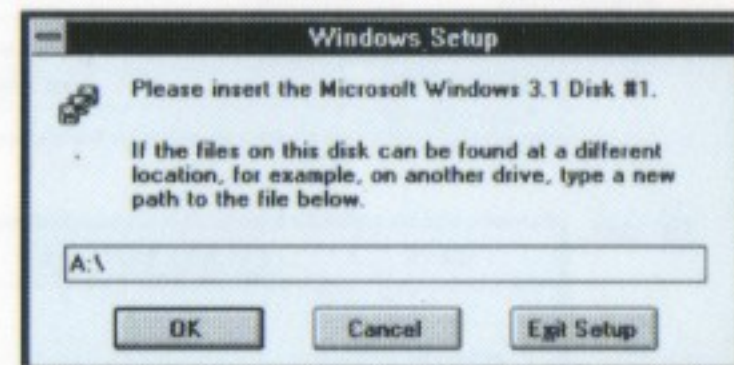
(fig. 1)



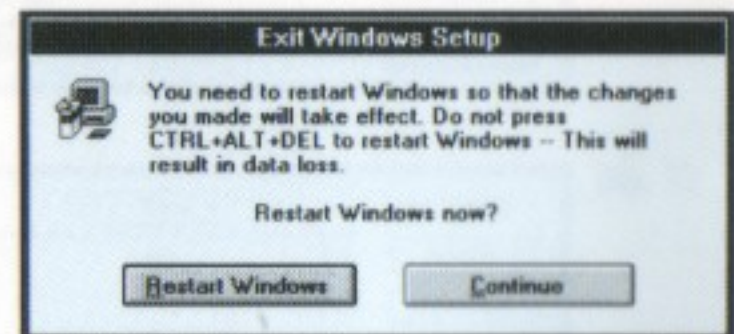
(fig. 2)



(fig. 3)



(fig. 4)



(fig. 5)

(2) Start up File Manager

Start up your File Manager and select the CD-ROM drive icon. When you select Tree, the file [setup.exe] will appear in the window. (fig. 6)

* If CD-ROM drive should not be among the File Manager drive-option icons, quit Windows, set up CD-ROM drive following your CD-ROM manual instructions, and then repeat the above procedure.

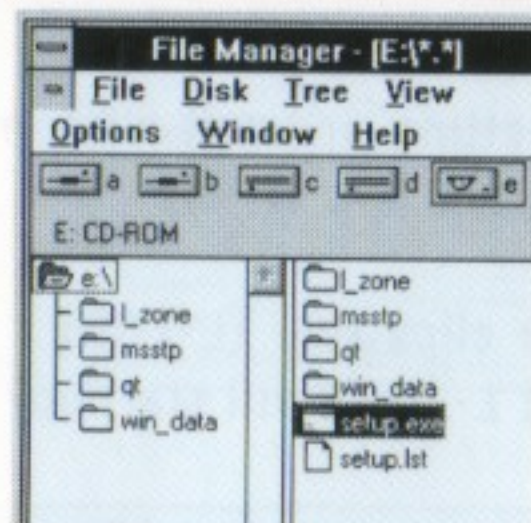
(3) Start up Setup Program

① Start up by double clicking [setup.exe]. It is necessary to this setup program that you have previously copied a 3MB file from CD-ROM to the hard disk. For initializing, the drive to which you will copy is set as [C:\]. If it is alright to copy to [C:\], click [OK]. Setup will begin. (fig. 7)

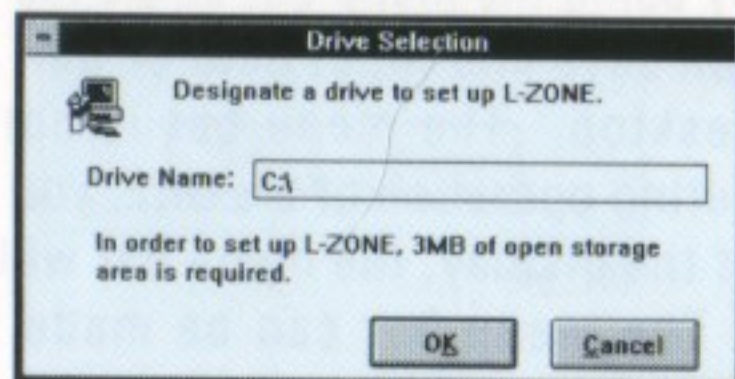
* If you wish to copy to a drive other than [C:\], be certain to select a drive that has 3MB or more of open area, change the drive name and then click [OK].

② When setup is complete there will be a group named [SYNERGY] in your Program Manager and inside [SYNERGY] will be displayed two icons [L-ZONE] and [L-ZONE Read Me]. (fig. 8)

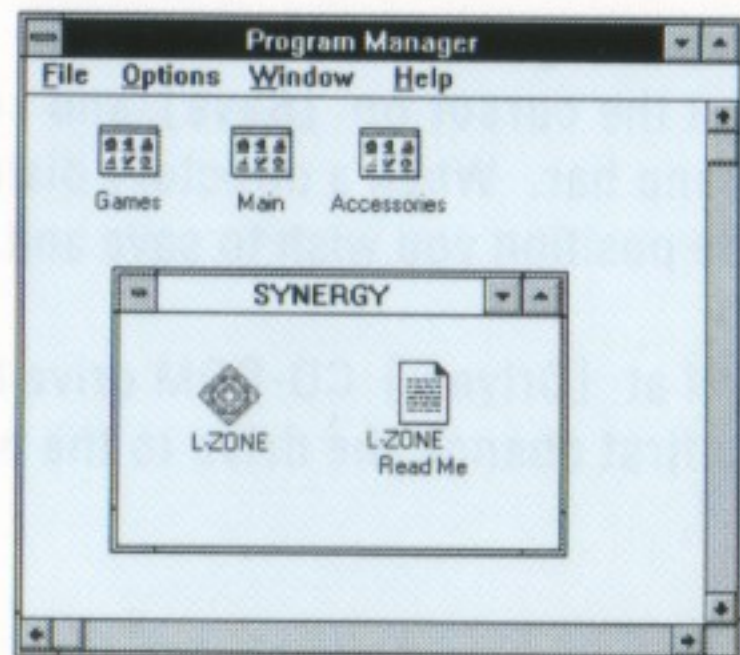
* In [L-ZONE Read Me] you will find more detailed information about Windows settings and other matters. If *L-ZONE* does not work as it should, double click this icon and set up Windows or MS-DOS according to its instructions.



(fig. 6)



(fig. 7)



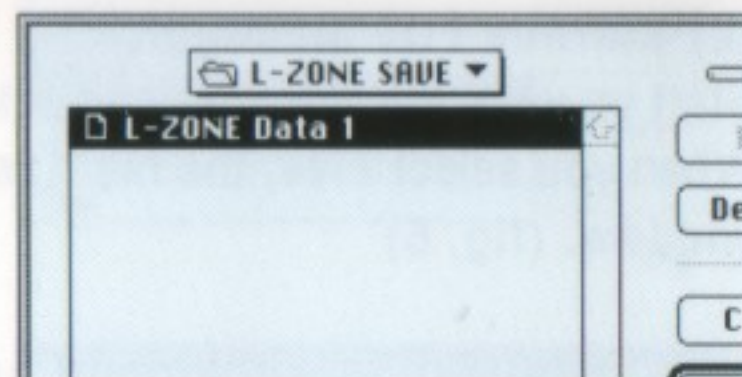
(fig. 8)

How to Enjoy **L-ZONE** —for Windows 3.1—

★ Starting Up

① After setting up, quit all applications except Program Manager.

② Double click the [L-ZONE] icon in the [SYNERGY] group and *L-ZONE* will start up. (fig. 9)



(fig. 9)

★ Operating the Menu Bar

By using the menu bar at the top of the *L-ZONE* display you can save and input data or quit *L-ZONE* and return to the desktop. The menu bar is not normally visible, but if, during operation of *L-ZONE*, you bring the cursor to the top of the display, the menu bar will appear. (fig. 10)

* The menu bar can be made to appear only when the cursor is visible on the screen.

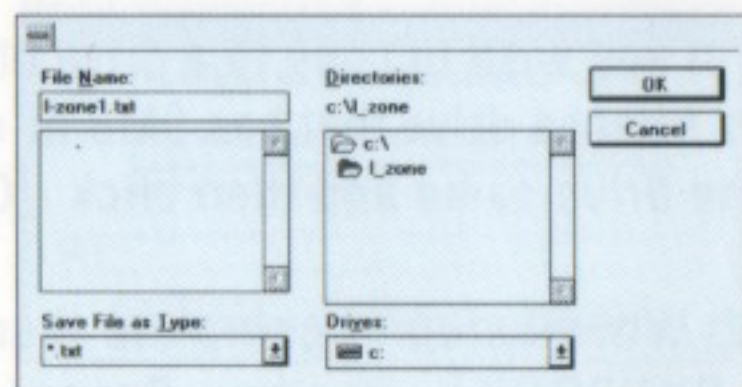


(fig. 10)

A. Saving Data

Set the cursor on [Save] and select it from [File] in the menu bar. When a directory dialog box appears, designate the position you wish to save and then click [OK]. (fig. 11)

* If at [Drives:] CD-ROM drive has been selected, be sure to first change the drive to the hard disk.



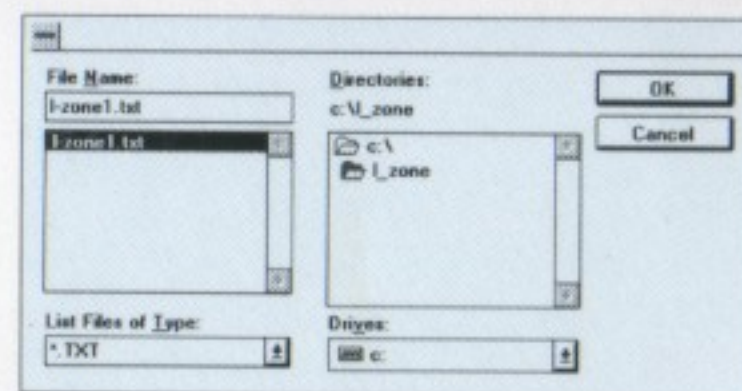
(fig. 11)

B. Inputting Data You Saved

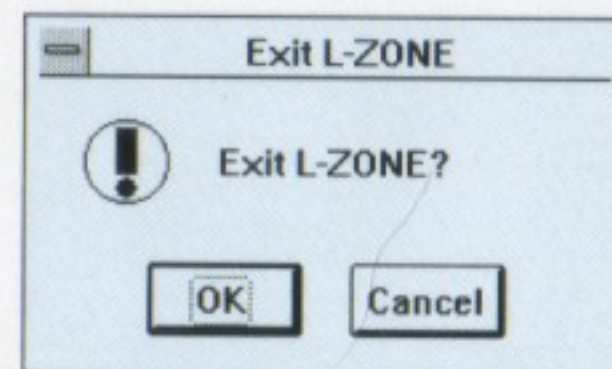
Select [Open] from [File] in the menu bar, choose the data you wish to input from the dialog box and then activate it. (fig. 12)

C. Quitting

Select [Quit] from [File] in the menu bar. A dialog box will appear. If you wish to first save your position, choose [Cancel], but if you are ready to quit, select [OK]. *L-ZONE* will terminate and you will return to your desktop. (fig. 13)



(fig. 12)



(fig. 13)

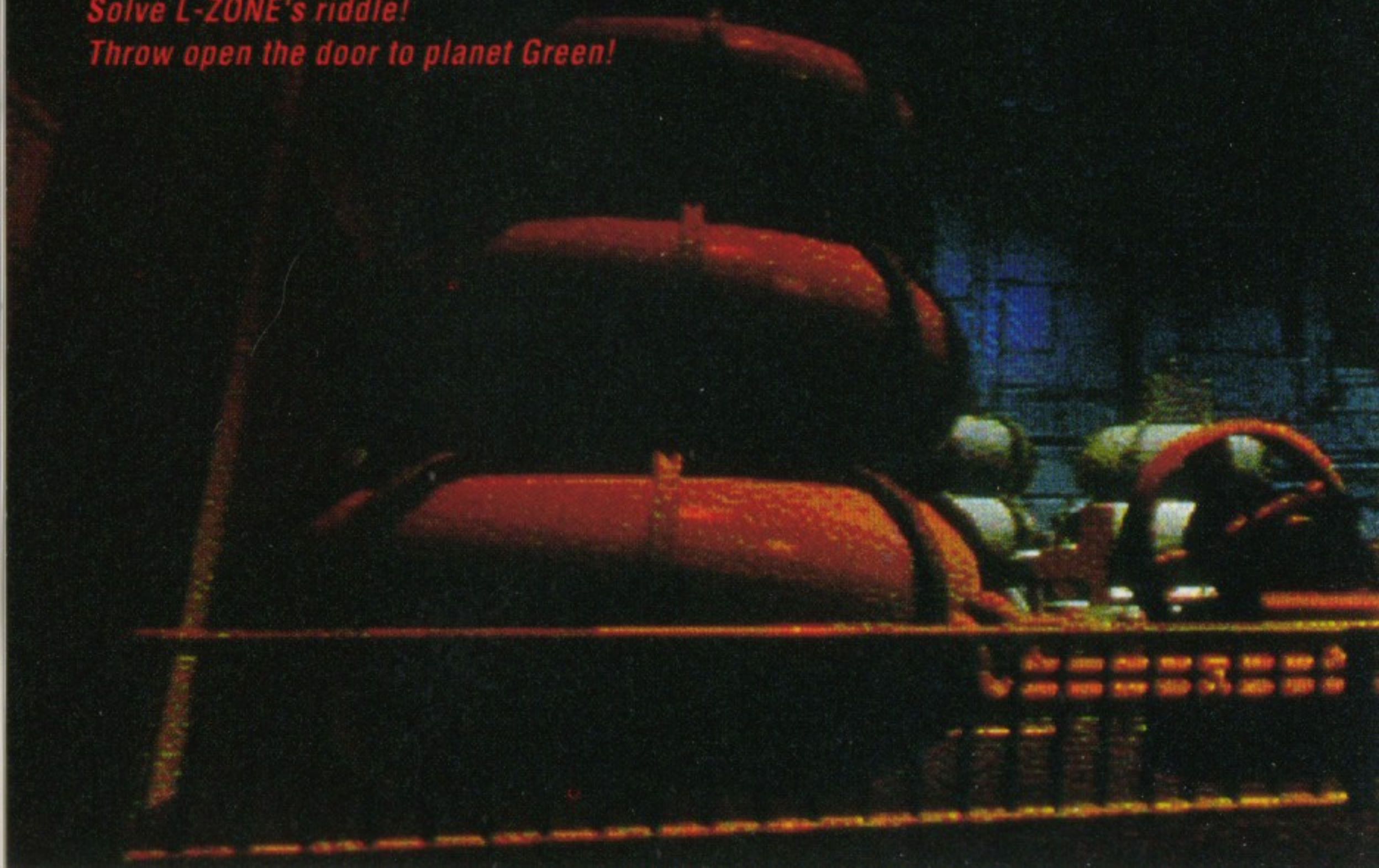
Things You Shouldn't Do

Avoid performing the following operations while *L-ZONE* is activated. Normal operation of the software may be affected.

- Unnecessary use of the keyboard
- Changing applications
- Inserting or removing disks

*L-ZONE— A hyper-automated city built by a mad scientist.
Beneath a gigantic dome rise monumental buildings. Within them extend vast spaces.
The tense air throbs with the hum of machinery.
A realm chock-full of idling machines, yet not a soul stirs.
The moment the switch is thrown, L-ZONE awakes.
The whine of machinery... a robot starts to move... the flash of a nuclear explosion.
Pass down the corridors, open every door, evade each trap.
When you've gone through all the zones, the path to planet Green will show itself.*

*Activate the machines!
Solve L-ZONE's riddle!
Throw open the door to planet Green!*





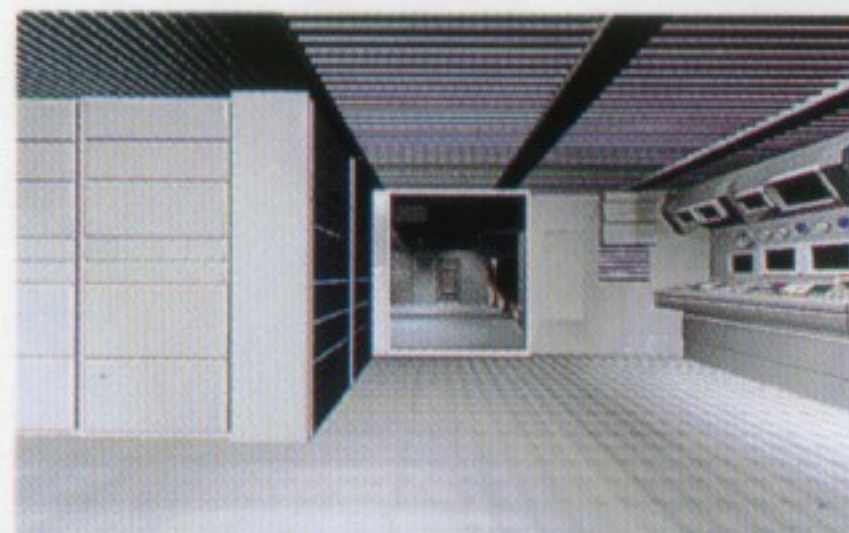
How to Play L-ZONE

L-ZONE is played by clicking with one's mouse objects in the visuals on the monitor, and so causing a turn of events that advances the game.

When you have mastered the following simple rules of the game, you will be able to visit every hidden corner and get the most enjoyment out of *L-ZONE*.

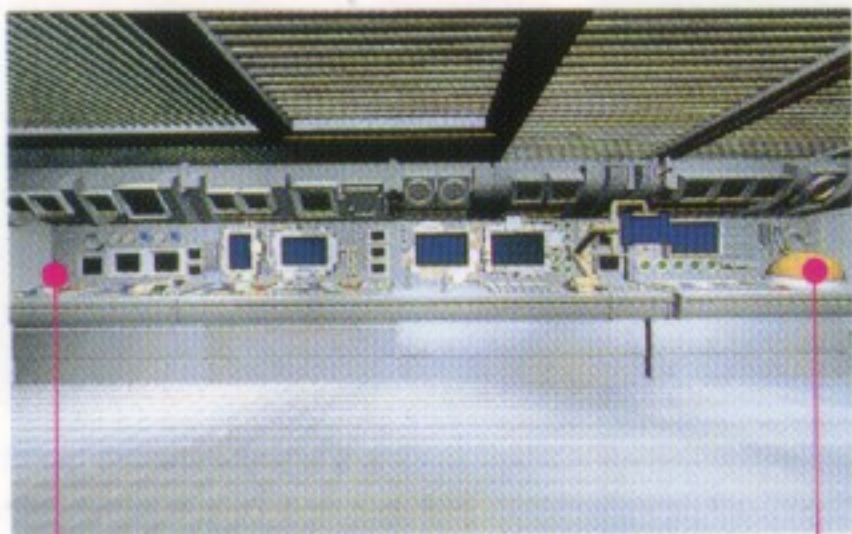
To Change Perspective

- * If you click at the right of the display, your line of sight will shift 90 degrees to the right, and if you click at the left, 90 degrees to the left.
- * If you want to draw closer to something ahead, click in front of you and you will advance a step.
- * If you want to draw closer to an object displayed on your screen, click it and you will be given a closeup view of it.
- * On the same principle, you can operate buttons and levers simply by clicking them.



View shifts 90° to the left

To Change Perspective



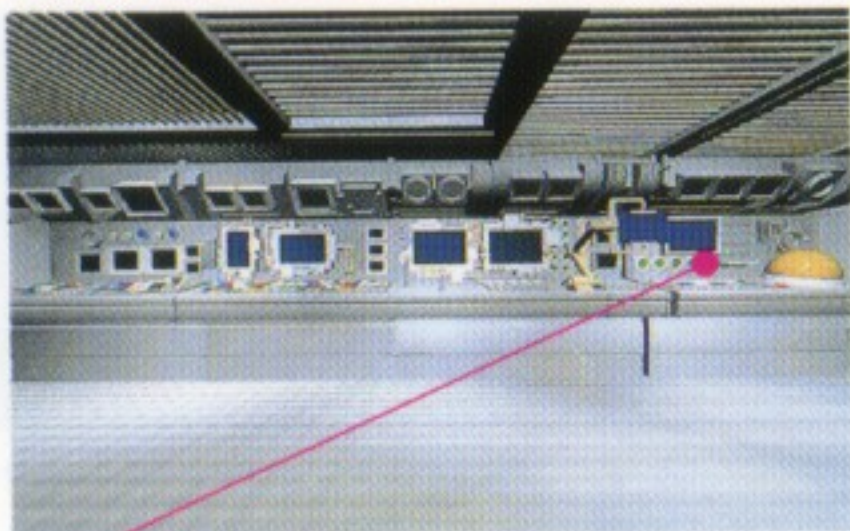
Click at the left

Click at the right



View shifts 90° to the right

For a Closeup View

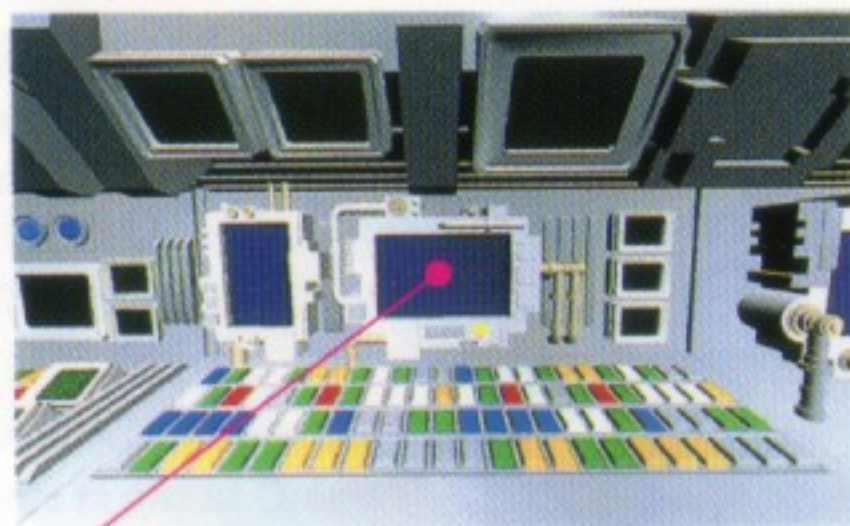


Click the monitor



The monitor shows a closeup

To Operate



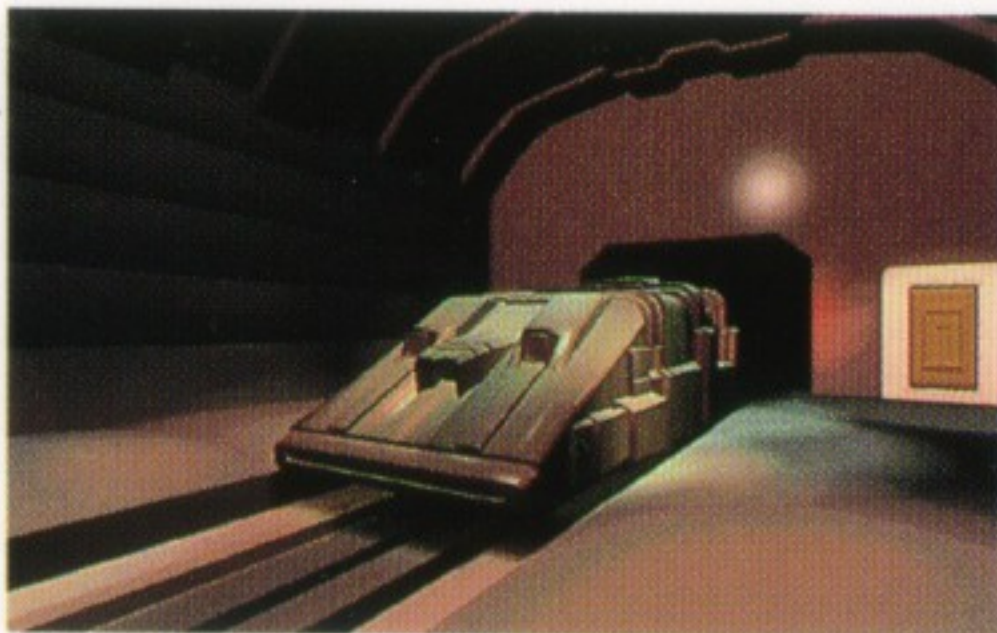
Click the darkened monitor



A visual is displayed

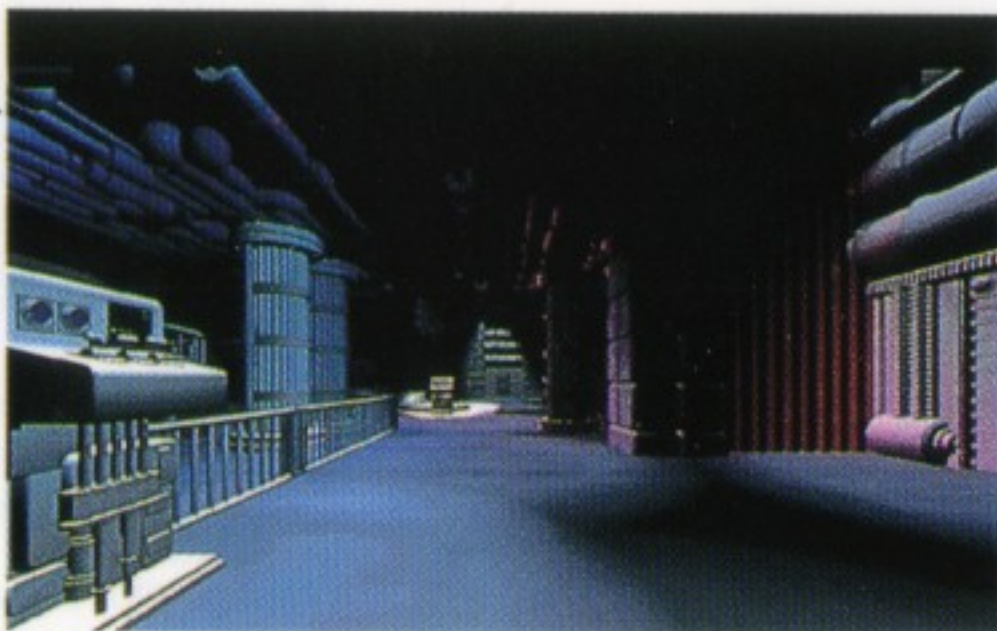
A Guide to The Sights of L-ZONE

STATION



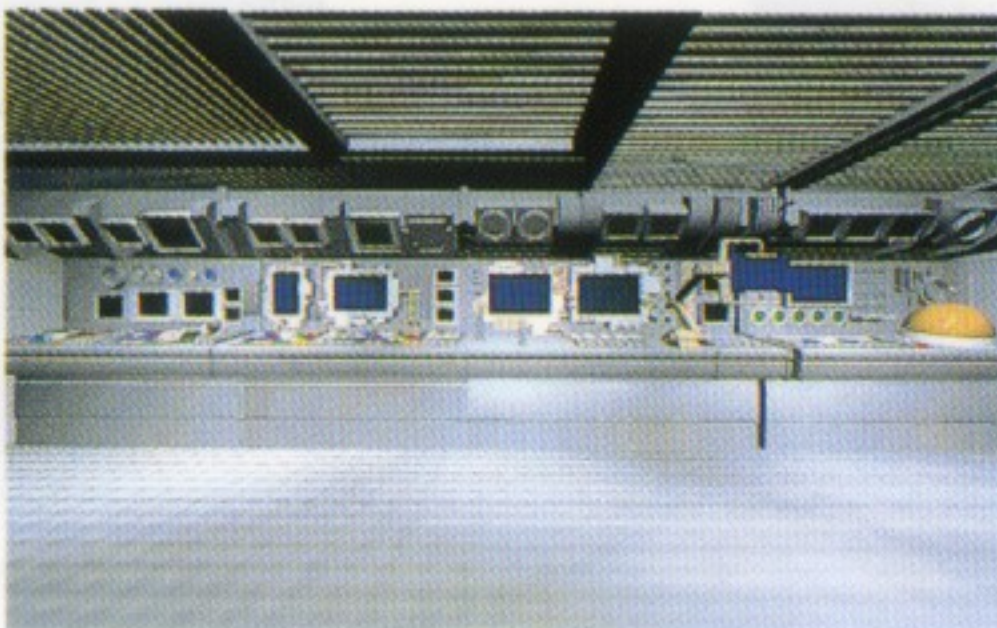
In an inhospitable land there rises a great domed city. From the moment you board the linear-motor train and pull the lever in the cockpit, you become the only human visitor to the ghost town of *L-ZONE*.

ZONE-A

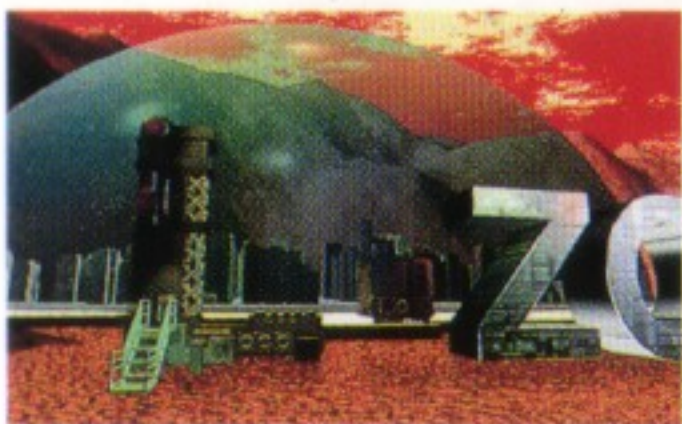


Huge speakers boom out noise. Synthesizers play a crazed melody over and over. Just the thing for noise-music freaks. The audio room of the near future.

ZONE-B



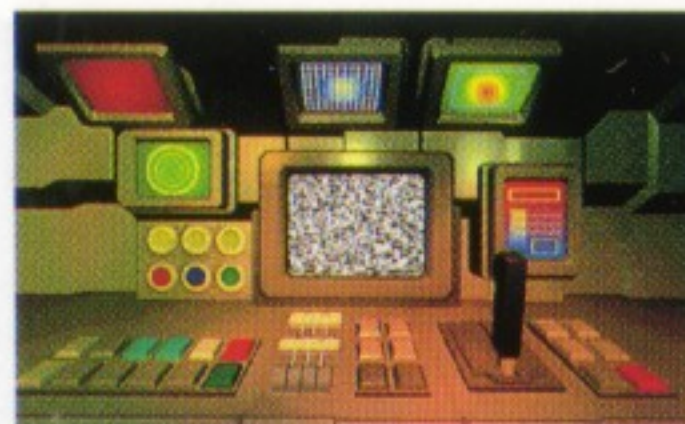
A computer console built into an entire wall. An isolation tank spinning with a myriad of image fragments. Welcome to the land of digital trips.



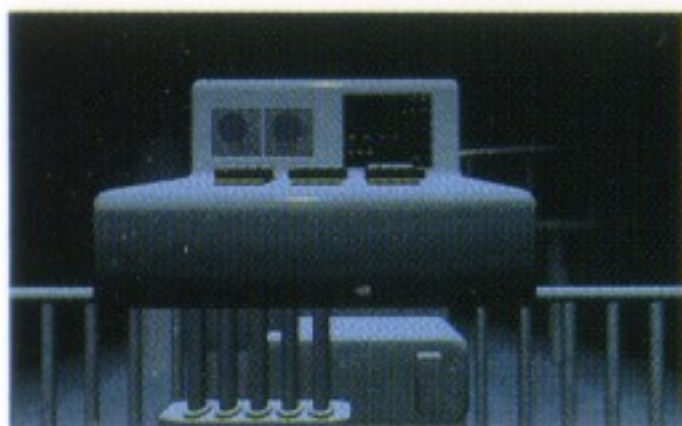
The L-shaped building is the entrance



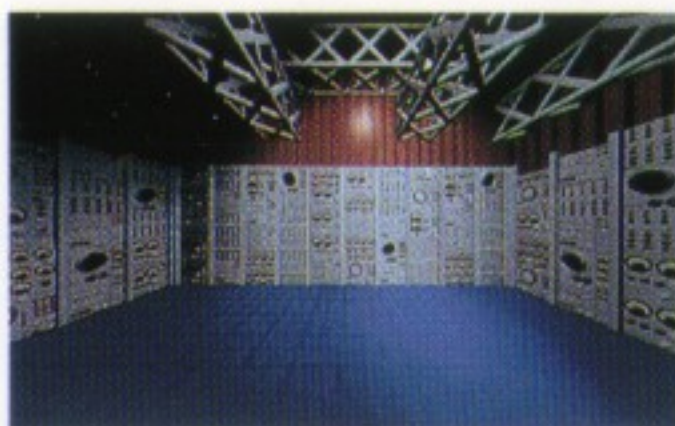
Through the doors and on to the station



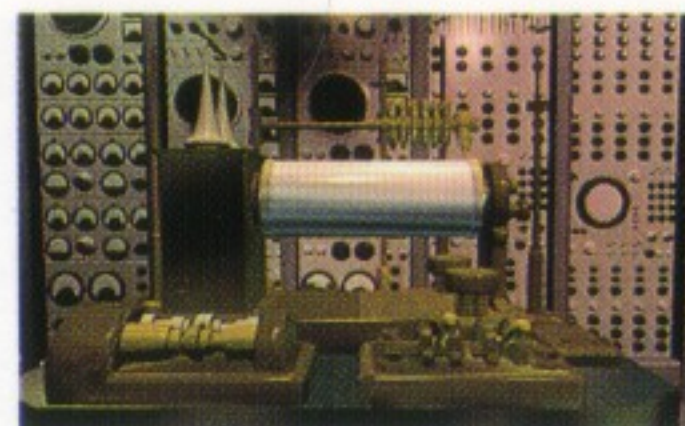
Into the cockpit and off to ZONE-A



Throw the main switch



Somewhere a synthesizer is hidden



An illusion woven of flashing lights and a spinning room



Find hints to planet Green



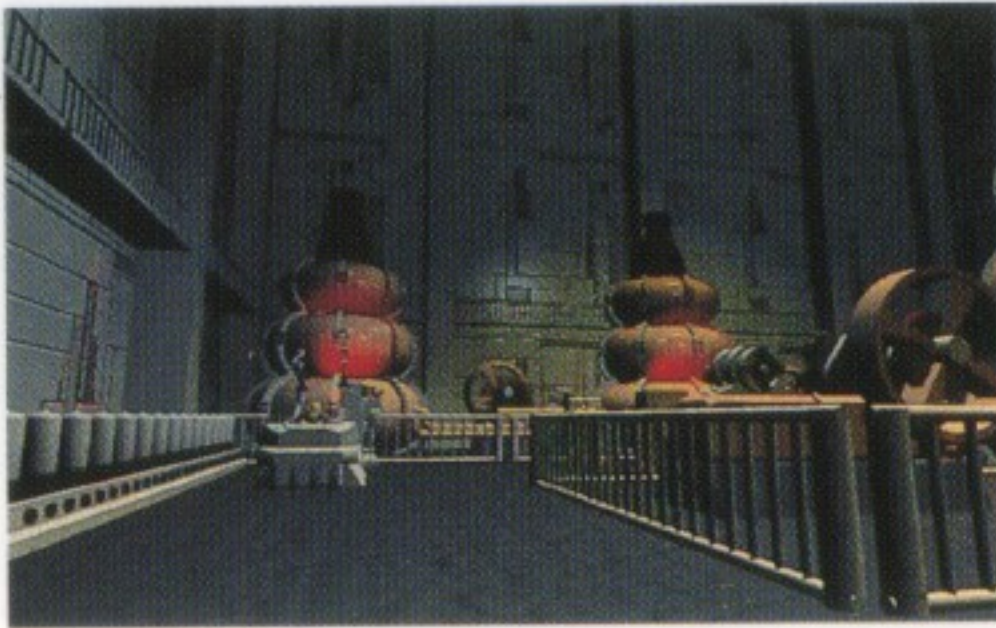
What does the hologram mean?



The trip happens in this tank

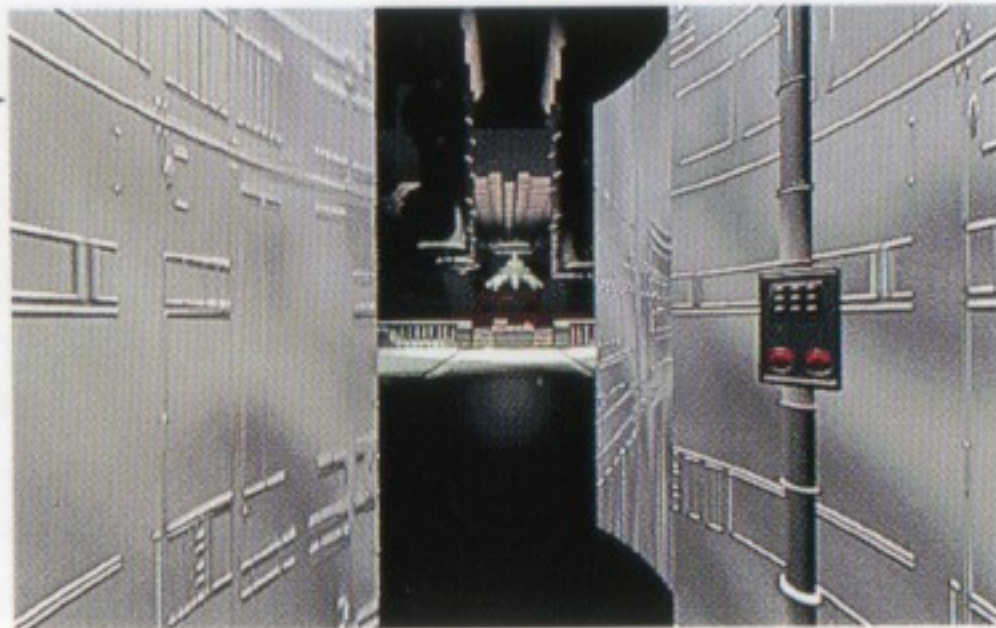
A Guide to The Sights of L-ZONE

ZONE-C



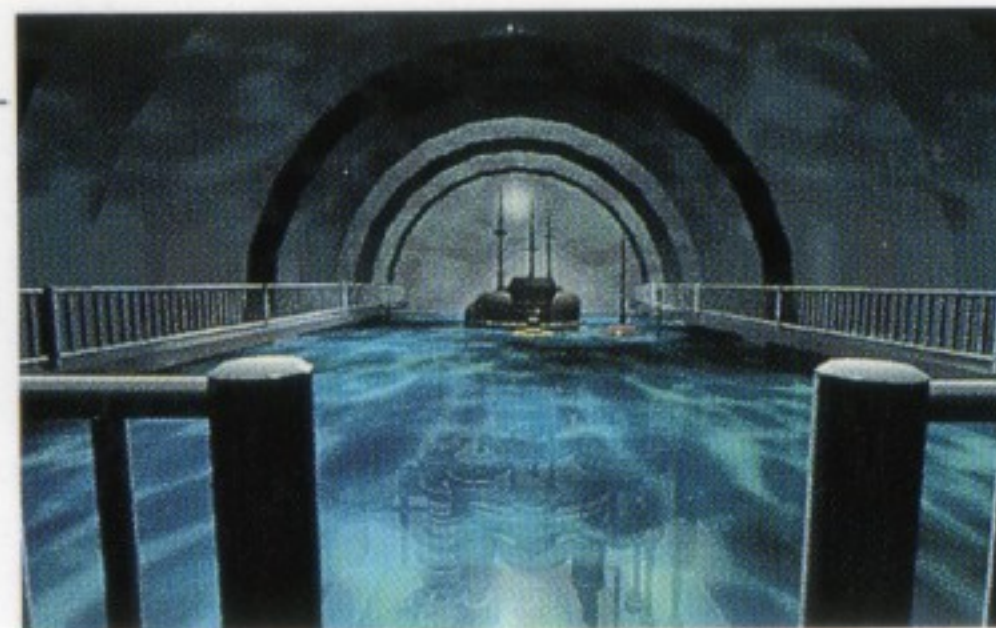
A door welded shut. A supine robot. A huge arm reigns over the operations room. Chemical elements combine and separate. Here abides the ambition of the mad scientist who failed to become a god.

ZONE-D

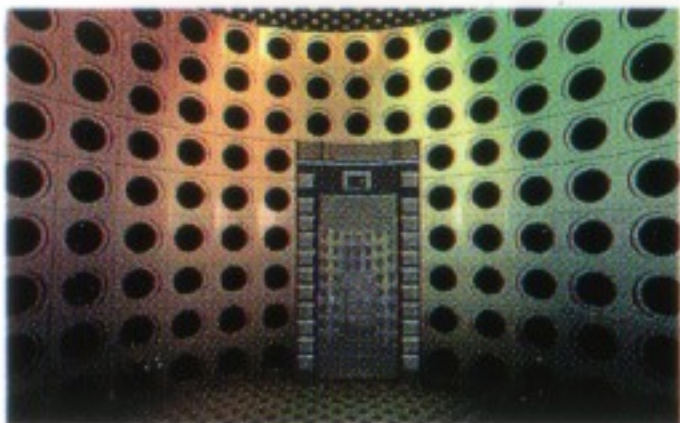


The blast of a bazooka: a target robot that exists only to be destroyed. The HMD continues to sound the alarm. Is the city you see outside the window a false image or true? Somewhere in this zone is hidden the switch that seals fates.

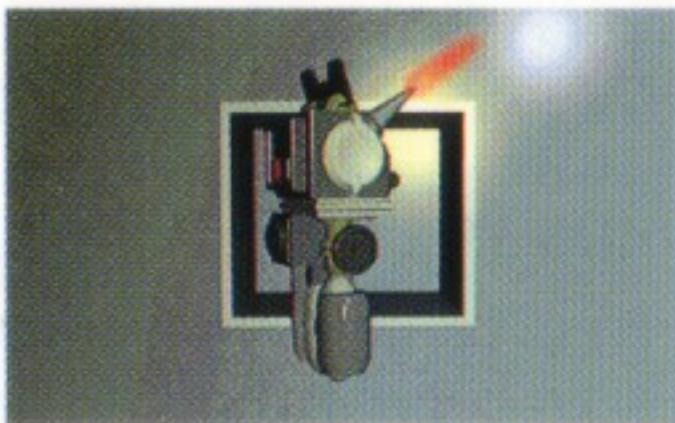
ZONE-???



A valve beneath the water. The flash of a teleporting device. Through the stone space station and onto the escape shuttle. Look for the hint that will get you to planet Green.



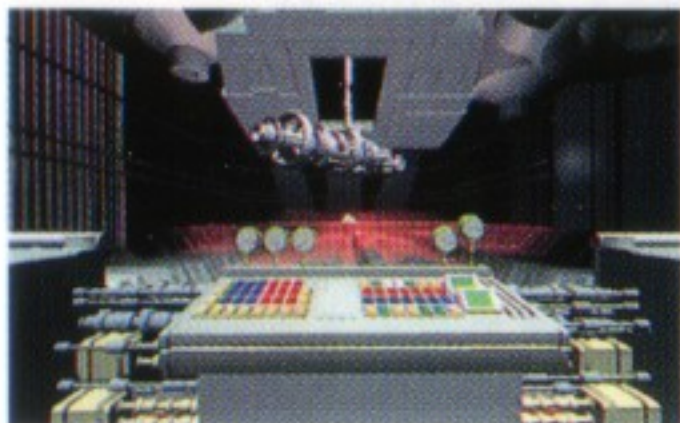
A shower of blinding light purifies you



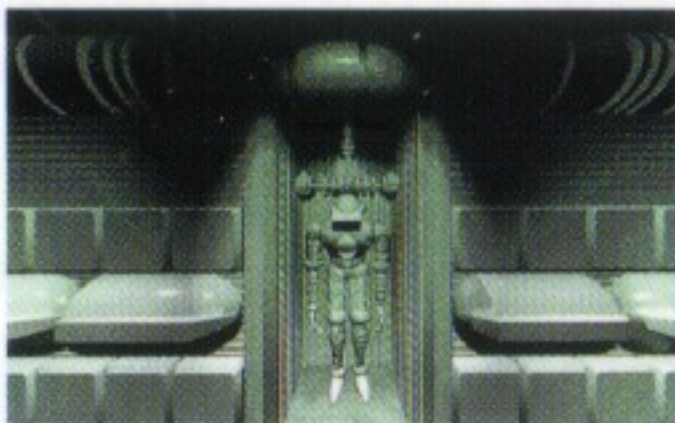
An oxyacetylene torch is the key



Set the lever for fusing matter



Choose your weapon and fire



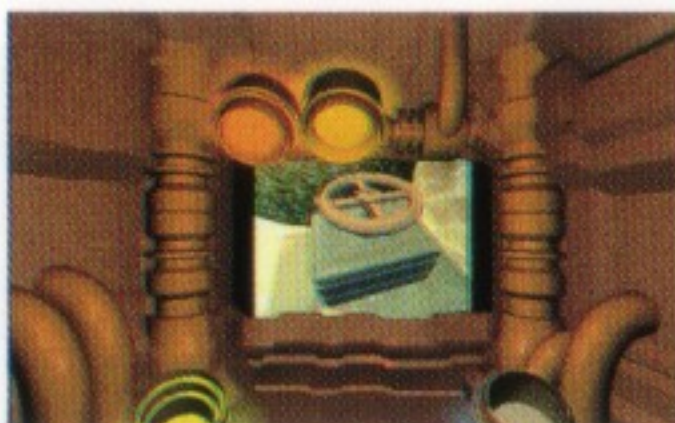
Find the spacesuit



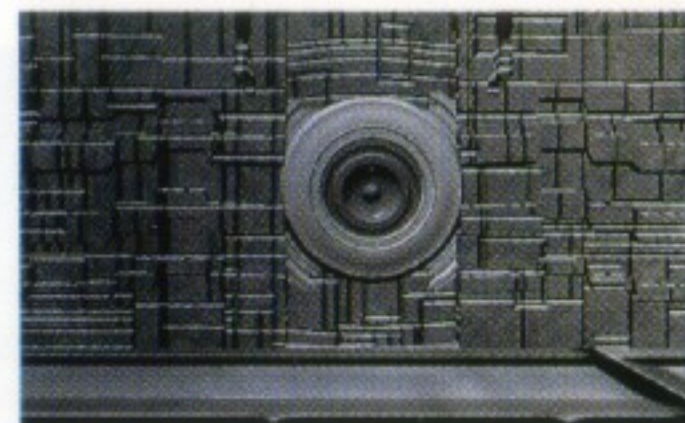
A ladder invites you to even greater depths



Breathe life into the abandoned robot



What's the clue to open the valve?



The door's the key to planet Green

Director Haruhiko SHONO on L-ZONE



Haruhiko SHONO (庄野晴彦)

Director

L-ZONE is not a saga of heroic adventure, for the main character is the uninhabited domed city *L-ZONE* itself.

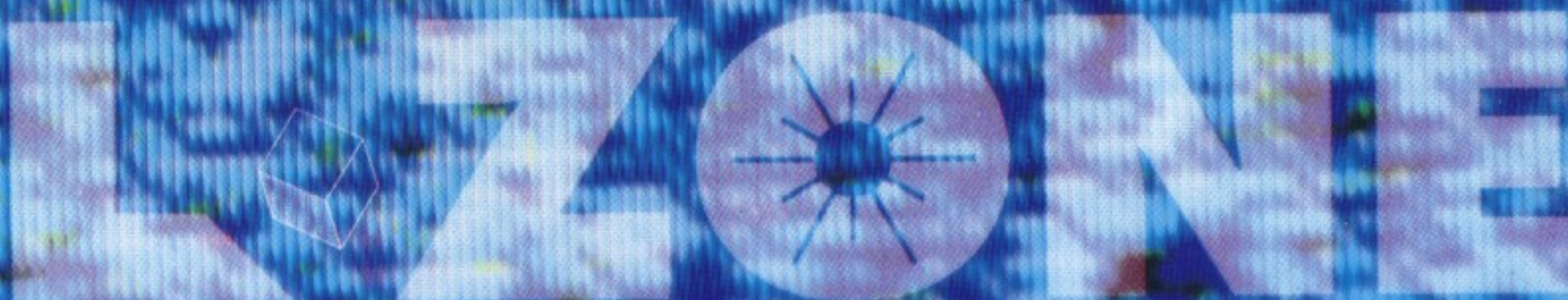
Conceived by a mad scientist, it is a realm that has with the passage of time begun slowly to deteriorate. A vast number of machines and dynamos have been abandoned here, but how might anyone today ever guess what tasks they once performed?

The banks of machines and dynamos wait for some agency to switch them on and so awaken *L-ZONE* to function as it did in the past.

Only one human being is permitted to establish contact with *L-ZONE* and walk its serried corridors...the player.

Although he is given premonitions of the great dangers following on manipulation of the control panels and monitors that are scattered here and there, the player is lured on by an irresistible force.

Taste the fearsome delights of the imagination that will arise from contact with *L-ZONE*.



Credits

Director

Haruhiko SHONO

Visuals

Haruhiko SHONO

Hiroyuki MIURA (SYNERGY)

Minoru KUSAKABE (SYNERGY)

Sound & SE

Norikazu MIURA

Computer Programming

Haruhiko SHONO

Takeshi SUZUKI (SYNERGY)

Koji KATAYAMA (SYNERGY)

Takakiyo MARUYAMA (SYNERGY)

Package Designed by

Isao KONAKA (SYNERGY)

Fusako TAKAYAMA

Englishing

DAVID

Production Management

Yoshie IKEDA (SYNERGY)

Midori TSUJIMURA (SYNERGY)

Toshihiro MASUMURA (SYNERGY)

Public Relations

Junichi SUGIE (SYNERGY)

With the Kind Assistance of

Mitsuhiro SINODA/Daishi KIMURA

Tomomitsu NASUNO/Akihisa KOIKE

Tetsuro SATOMI/Jun TORITANI

Associate Producer

Gohta IWANAMI (INFOCITY)

Producer

Masanori AWATA (SYNERGY)

Created and Developed by

SYNERGY, Inc. & INFOCITY, Inc.

■For more information contact:

SYNERGY Corp.

333 South Hope Street

Los Angeles, CA 90071

Phone: (213) 687-2906 Fax: (213) 687-2946

For CD-ROM Titles Support Desk call: 1-800-734-9466

E-mail Address: westend@netcom.com

Copyright © 1993, 1994 SYNERGY, Inc. & INFOCITY, Inc.

Made in Japan

You may not decompile, reverse engineer, disassemble or otherwise reduce the Software to a human-perceivable form.
You may not modify, network, rent, lease, loan, distribute or create derivative works based upon this Software in whole or in part.
You may not electronically transmit this Software from one computer to another or over a network.

SYNERGY & INFOCITY