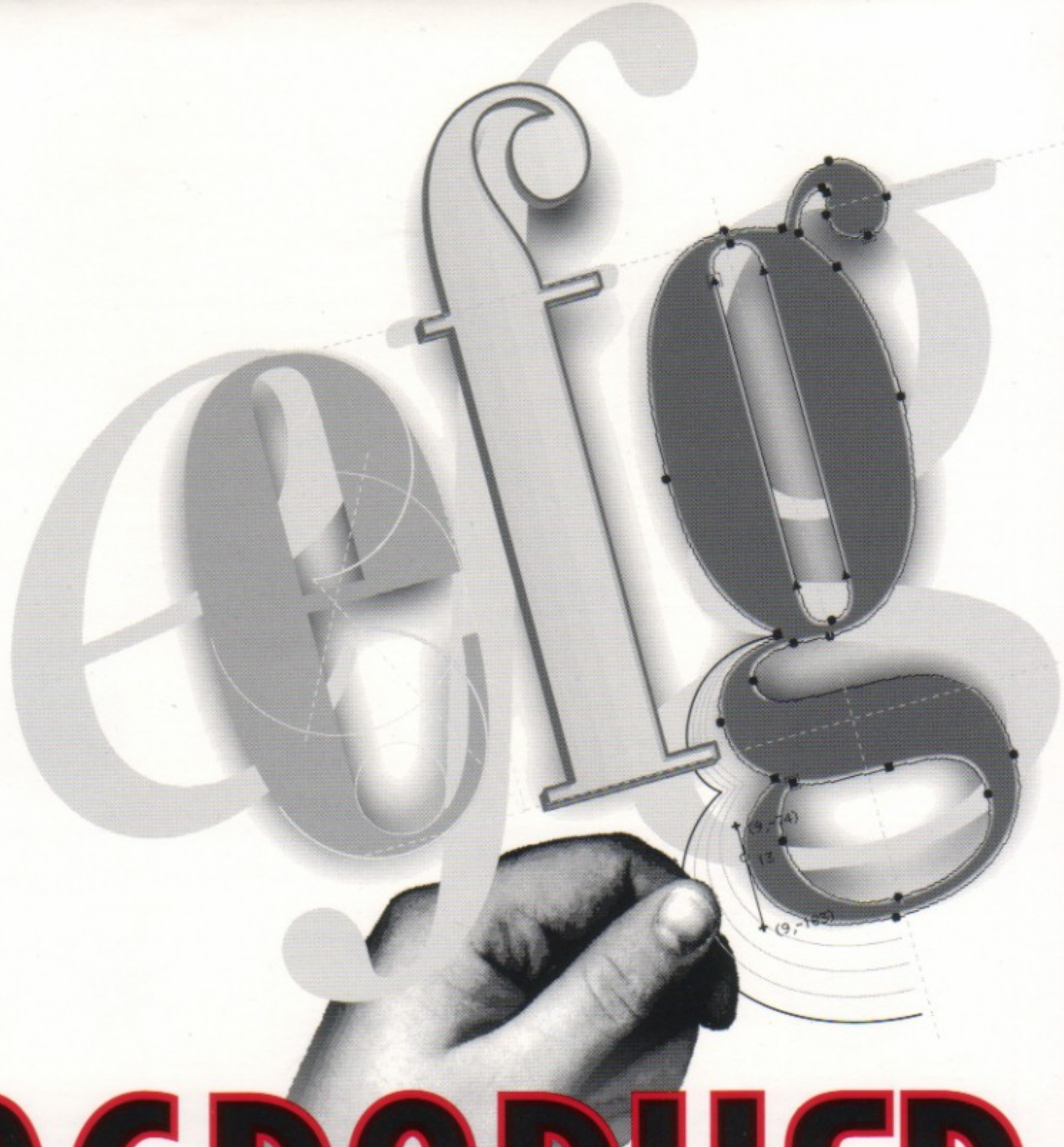


Quick Reference Card



MACROMEDIA

**Fontographer**



## The Quick & Easy

Outline  
Window

General  
Info



Deselect entire selection.

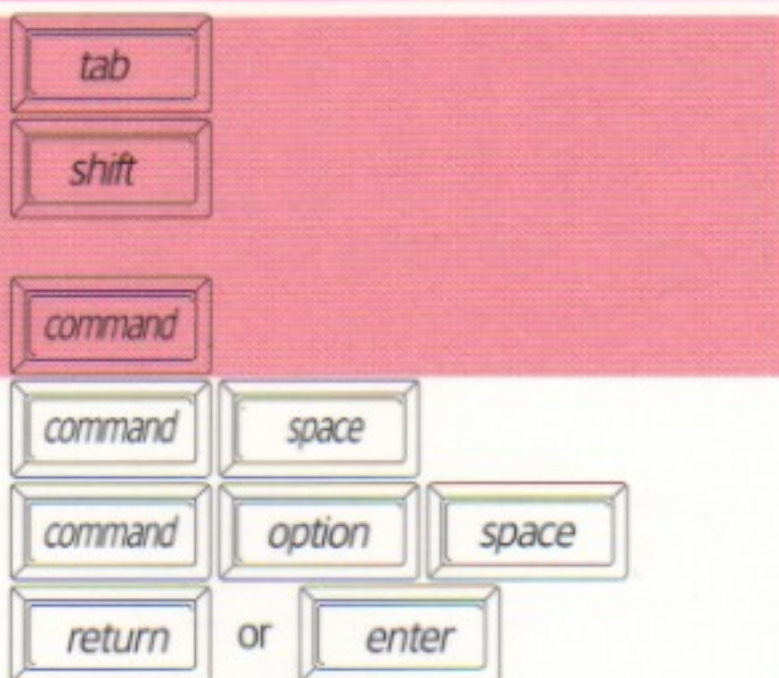
Constrain movement of selected points to horizontal, vertical, or 45° angles.

Change cursor to pointer tool temporarily.

Zoom in.

Zoom out.

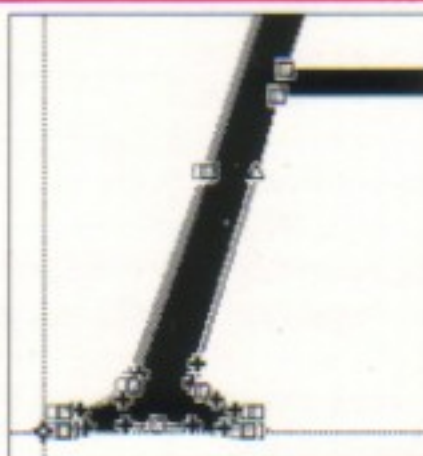
Toggle lock on  and off .



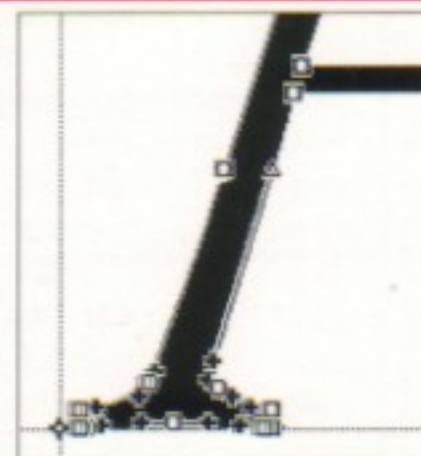
Moving  
with  
Arrow  
Keys

Distances:  
Cursor-key distance: 10 em units  
Grid spacing: 1 em units  
Snap-to distance: 4 pixels

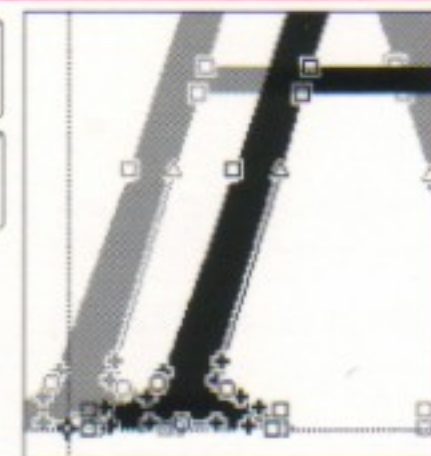
Move selected points by default amount in the direction of the arrow.



Move selected points by one-tenth the default amount in the direction of the arrow.



Move selected points by 10 times the default amount in the direction of the arrow.

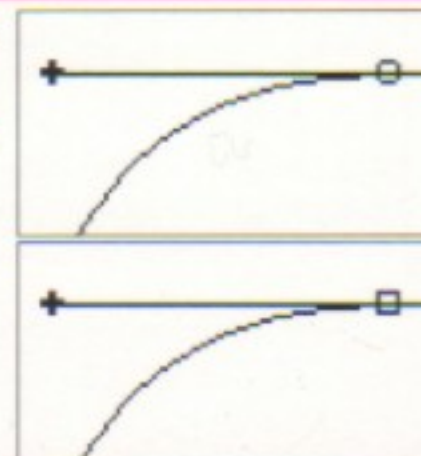


BCP  
Control

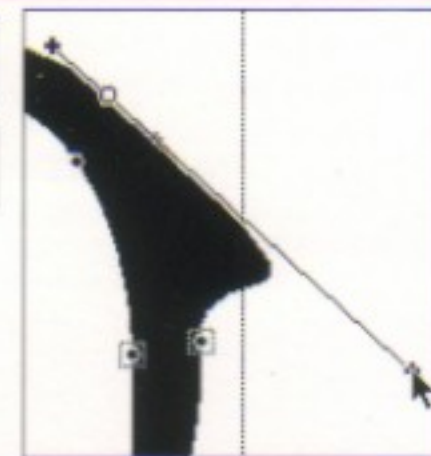
Allows dragging of BCP when it is on top of a single selected point.



While drawing with the pen tool, this will change a curve point to a corner point.



Constrain a BCP on its original angle.



Bitmap  
Window

General  
Info


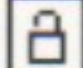
Zoom in.

Zoom out.

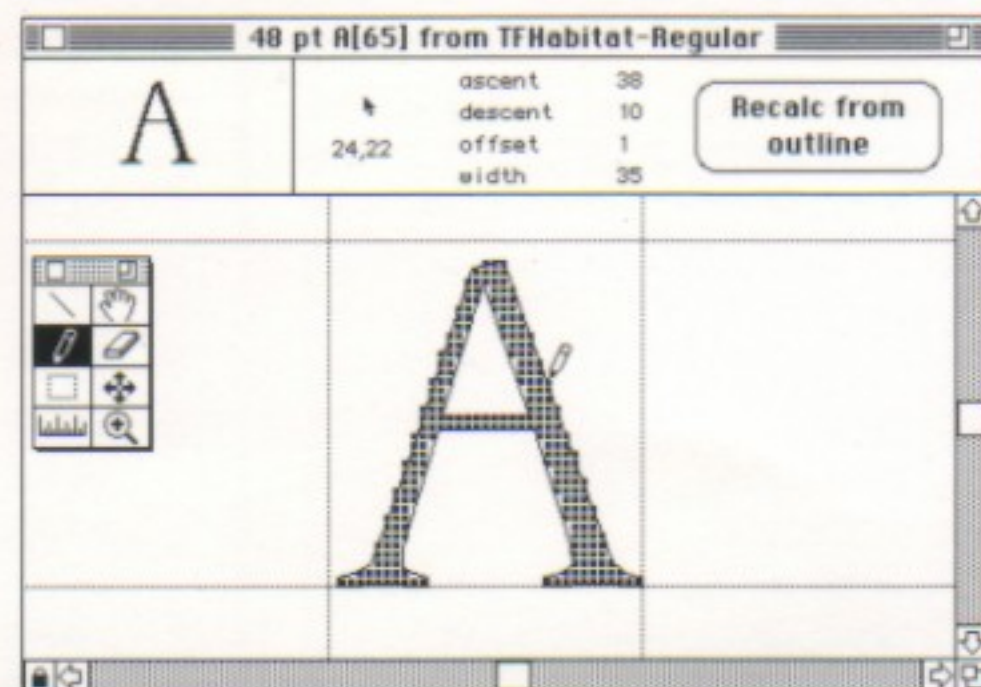
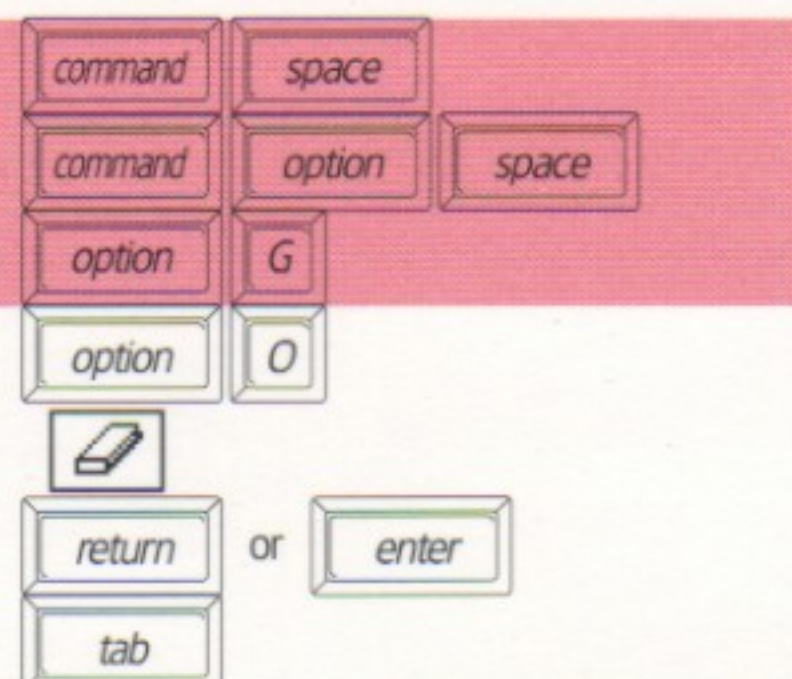
Toggles the guidelines on and off.

Toggles the outline on and off.

Double click tool erases entire bitmap.

Toggle lock on  and off .

Deselects entire selection.





## The Quick & Easy

### Metrics Window

### General Info

Drag a guide/bar.

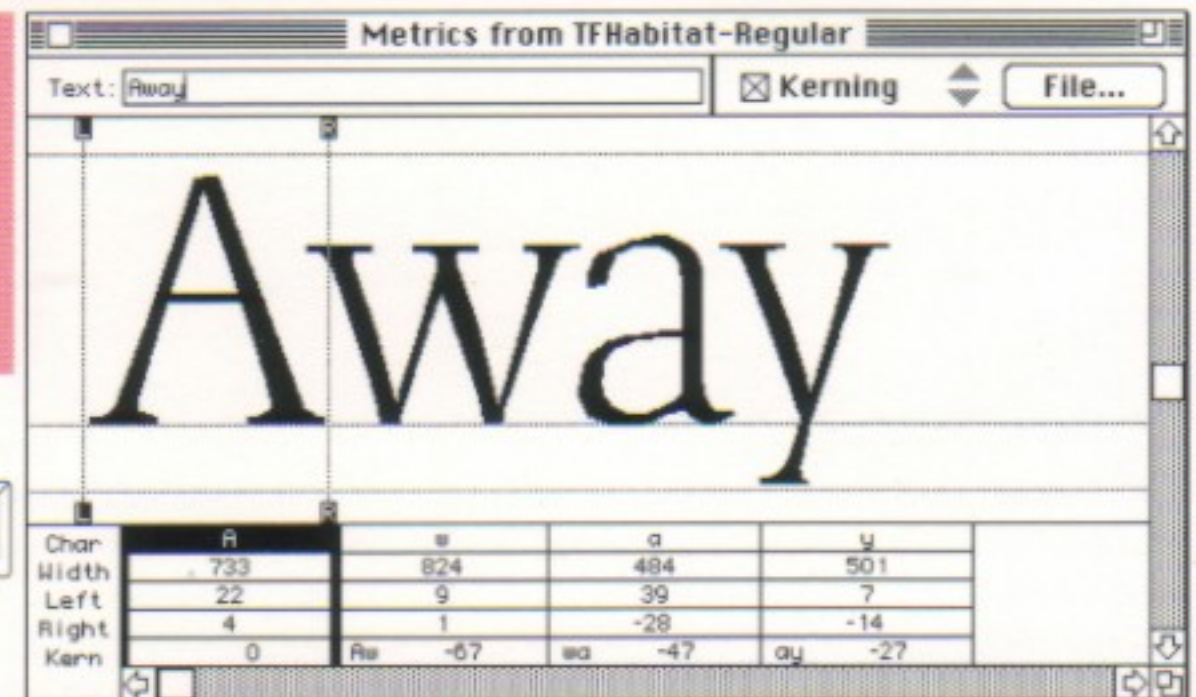
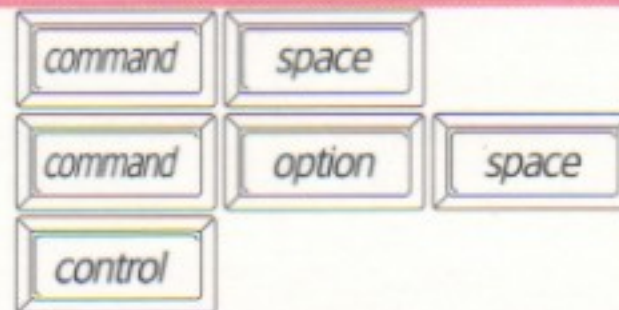
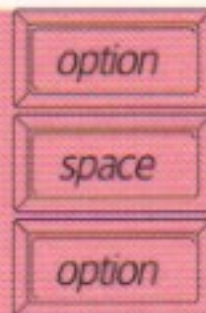
Change cursor to hand tool.

Move numeric info to be directly underneath character.

Zoom in.

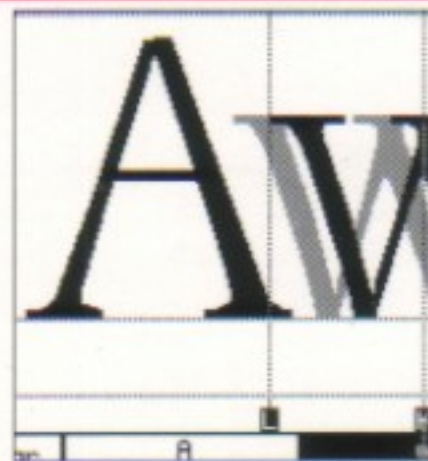
Zoom out.

Demagnify movement of selection.



### Moving, Kerning & Spacing

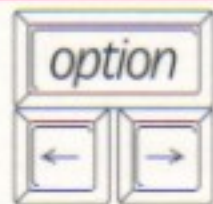
Select character and move in a horizontal direction.



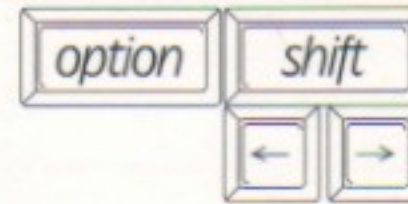
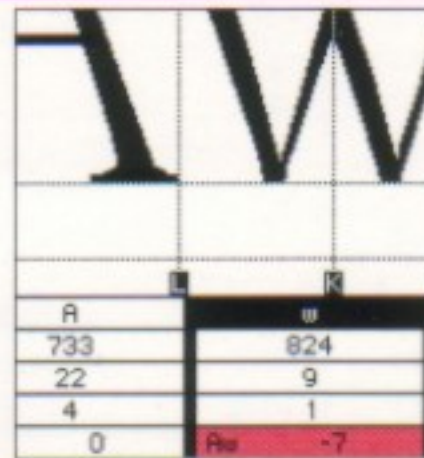
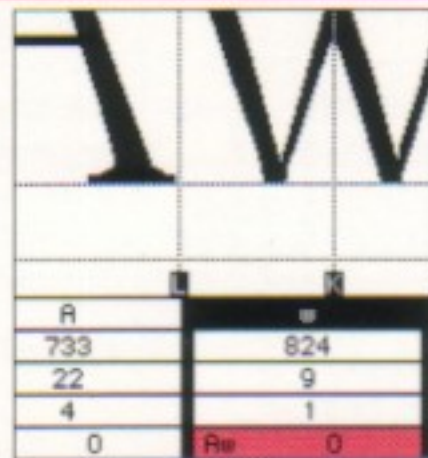
Select character and move in a vertical direction.



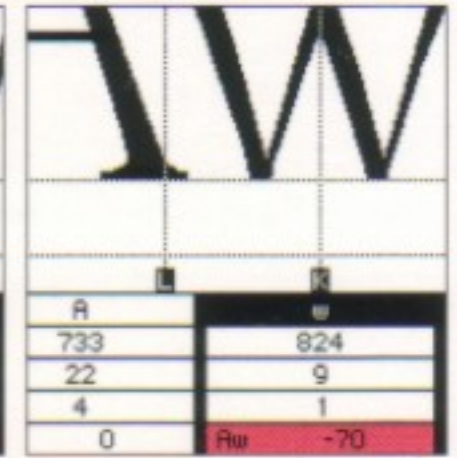
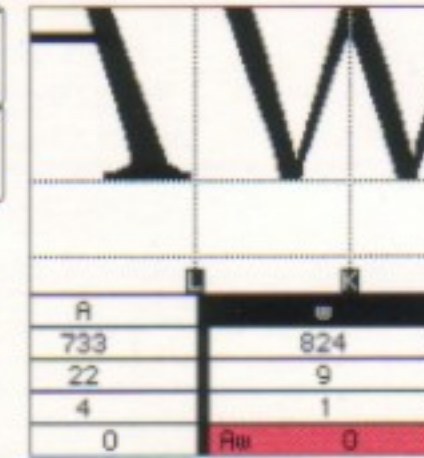
Select sidebearing guides and slide; that particular sidebearing will be preserved while the others change.



Adjusts values in increments of one em unit.

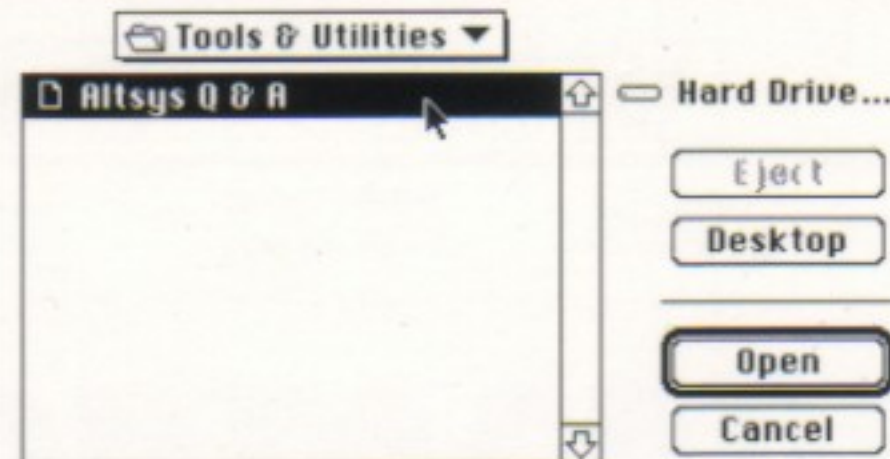


Adjusts values in increments of ten em units.



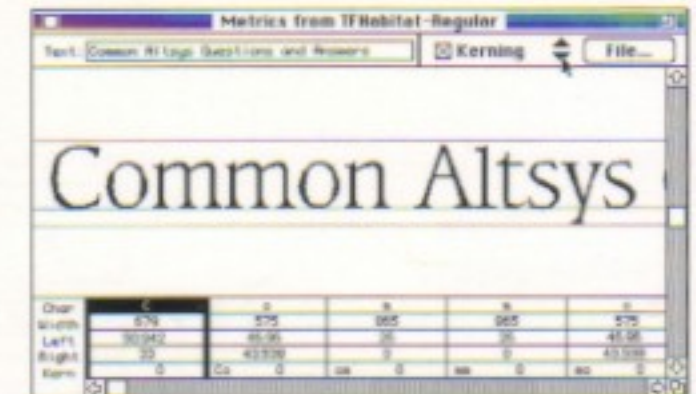
### Importing Text

Text can be imported to view in your font by selecting the "File" button...



Select a text file that contains a list of characters you wish view in the metrics window.

...and selecting the text file...



...Scroll through the text by using the triangles next to the "File" button.

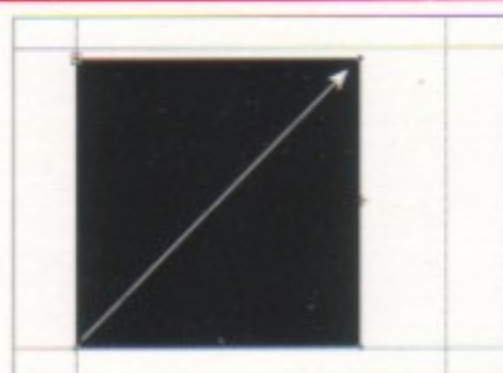


# The Tools

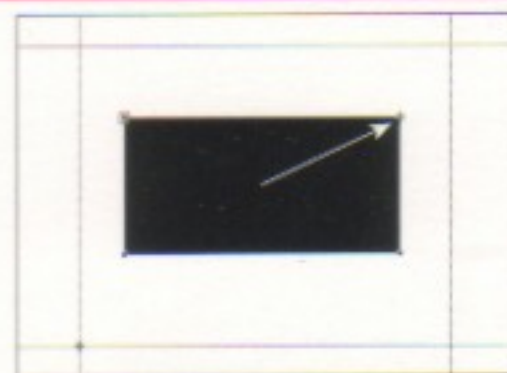
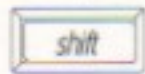
## Rectangle



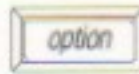
Draw a rectangle.



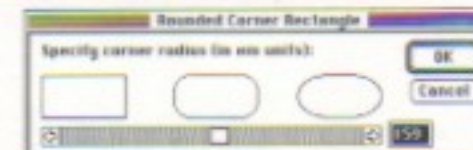
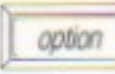
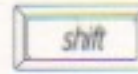
Draw a square.



Draw a rectangle from its center.

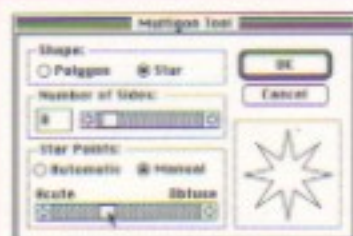


Draw a square from its center.



Change the corner radius of the next rectangle you draw by double clicking on the tool icon.

## Multigon



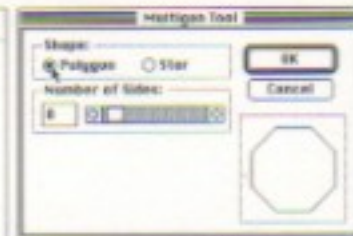
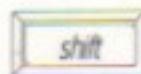
Double-click to choose a star's shape.



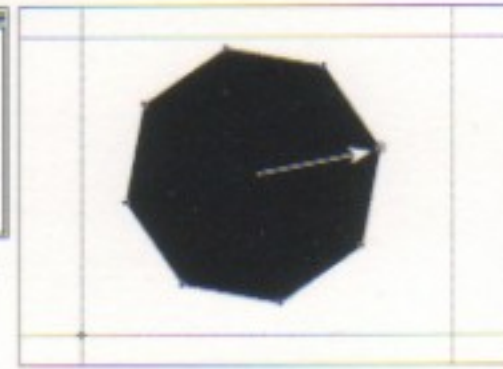
Draw a star from its center.



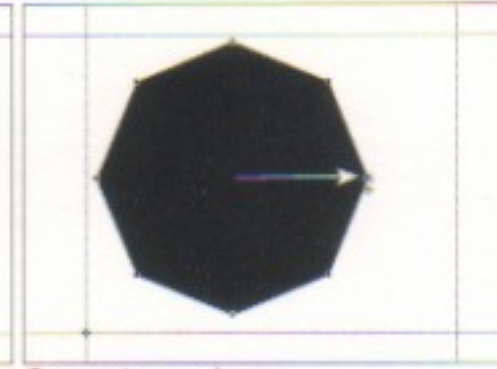
Constrain a star to 45° angles.



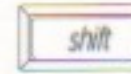
Double-click to choose a polygon's shape.



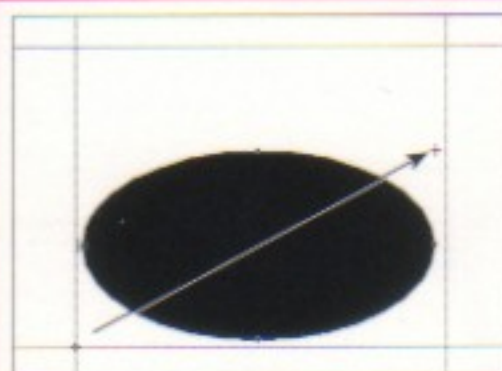
Draw a polygon from its center.



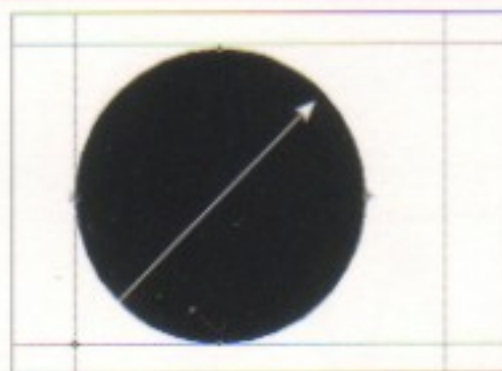
Constrain a polygon to a 45° angle.



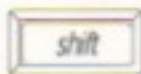
## Oval/Circle



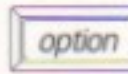
Draw an oval.



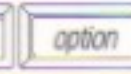
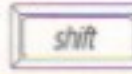
Draw a circle.



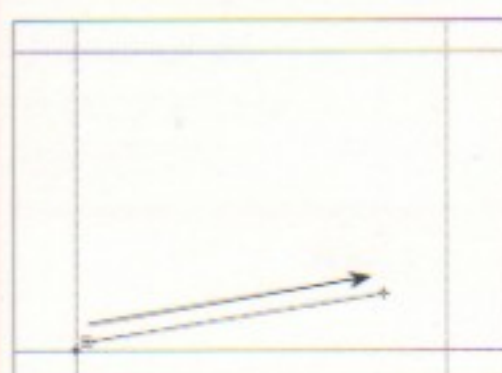
Draw an oval from its center.



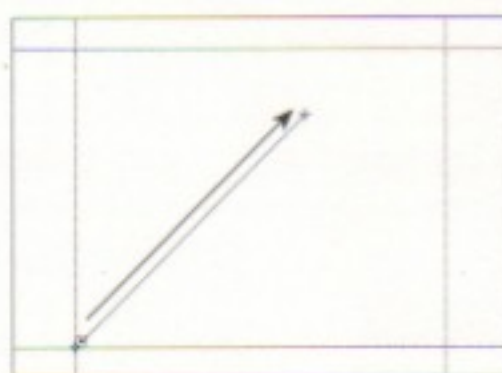
Draw a circle from its center.



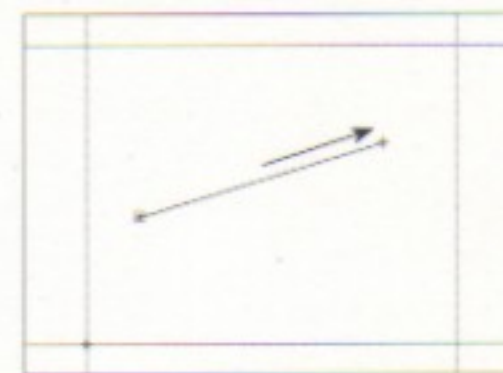
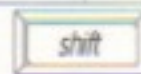
## Line



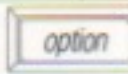
Draw a line.



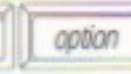
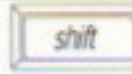
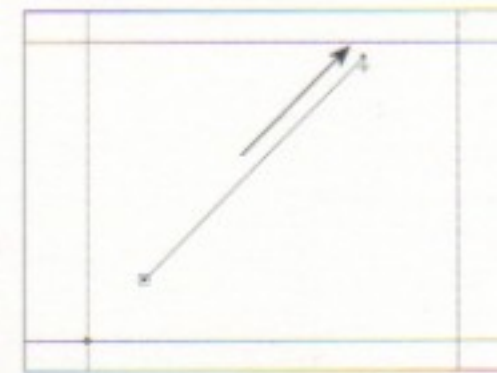
Constrain a line to a 45° angle.



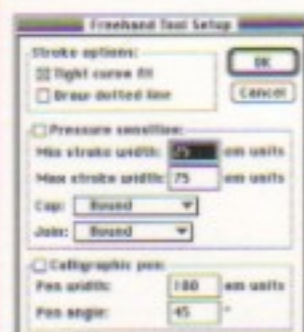
Draw a line from its center.



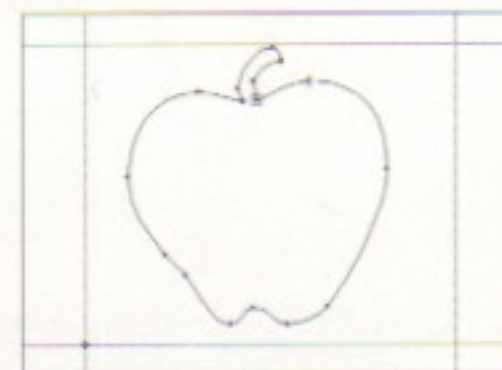
Draw a line from its center and constrain it to a 45° angle.



## Freehand



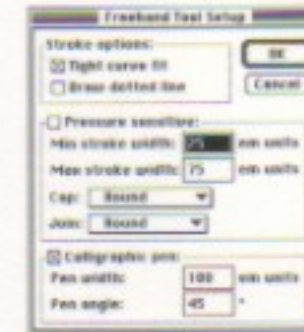
Double-click to set freehand tool options.



Draw a freehand path.



Choose the pressure-sensitive tool to draw a variable-weight path.



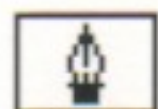
Choose the calligraphic pen tool to draw a calligraphic path.



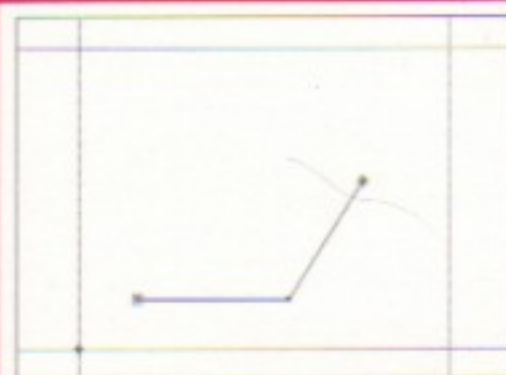


# The Tools

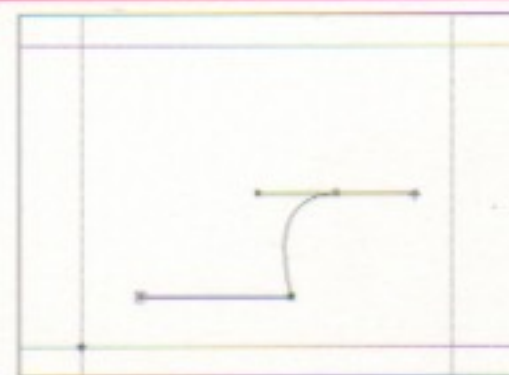
## Pen



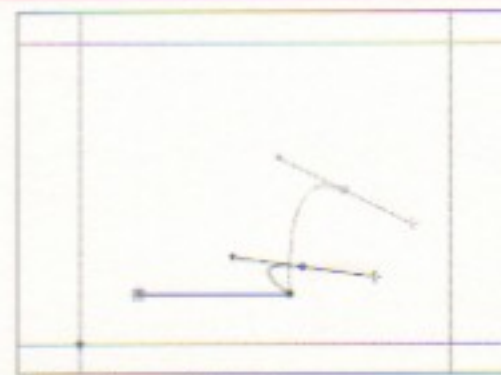
6



Click to place a corner point.



Click and drag to place a curve point.



Move the point and handles together.

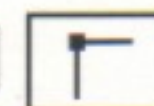
Command

8



Creates curve points.

9



Creates corner points.

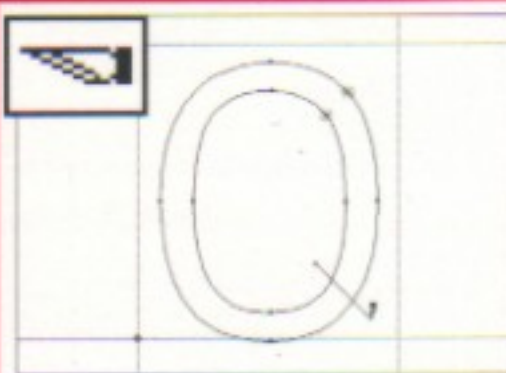
0



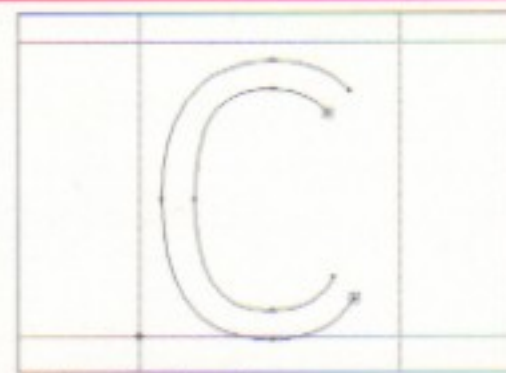
Creates tangent points.

## Knife, Measuring and Magnifying

7



Click and drag to cut paths.



Hold option key to remove a segment.

option



Click and drag to measure between two points.



Click and drag to select an area...



...and it magnifies to fill the window.

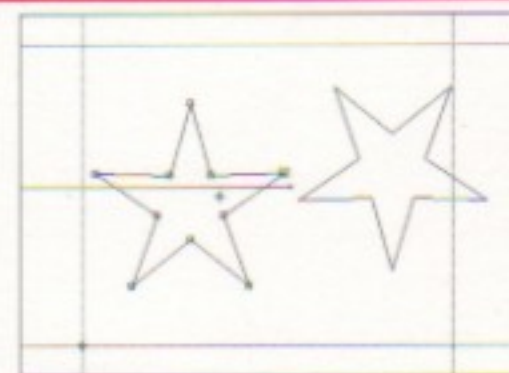
## Transform Rotate



Double-click to get dialog box.



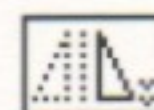
Click and drag to rotate around a chosen point.



Constrain the rotation to 45° angles.

shift

## Mirror



Double-click to get dialog box.



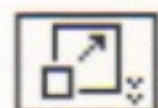
Reflect objects around an axis, constrained to 45° angle.



Unconstrain the reflection.

shift

## Scale



Double-click to get dialog box.

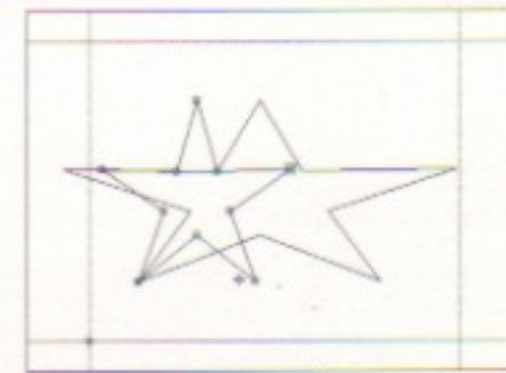


Click and drag to scale around a chosen point.



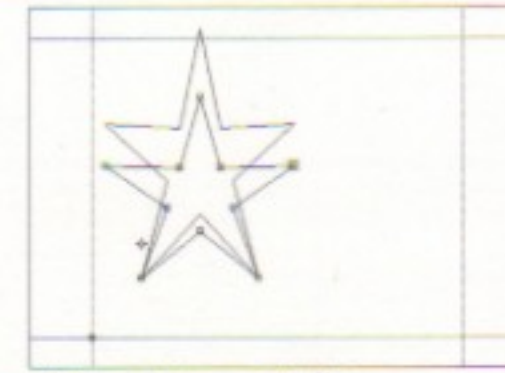
Click and drag at a 45° angle to scale uniformly.

shift



Click and drag horizontally to scale along horizontal axis.

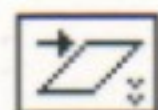
shift



Click and drag vertically to scale along vertical axis.

shift

## Skew



Double-click to get dialog box.



Click and drag to skew around a chosen point.



Click and drag to skew uniformly.

shift



Click and drag horizontally to skew along horizontal axis.

shift



Click and drag vertically to skew along vertical axis.

shift



FUNCTION	KEY COMMAND	FUNCTION	KEY COMMAND	FUNCTION	KEY COMMAND	FUNCTION	KEY COMMAND
Align Points	Command-e	Duplicate	Command-d	Open Font...	Command-o	Reset Basepoint	Command--
Align Points to Grid	Command-Shift-q	Expand Stroke...	Command-Shift-e	Open Metrics Window...	Command-k	Retract BCPs	Command-r
Auto Curvature	Command-Shift-u	Flip Hint Direction	Command-Shift-f	Open Outline Window...	Command-h	Save	Command-s
Auto Trace...	Command-Shift-t	Hint Parameters...	Command-Shift-j	Paste	Command-v	Select All	Command-a
Autohint	Command-Shift-a	Make Diagonal Hint	Command-Shift-d	Preferences...	Command-Shift-p	Selection Info...	Command-i
Build Serif	Command-Shift-b	Make Horizontal Serif	Command-Shift-z	Preview	Command-l	Set Basepoint...	Command-`
Change Weight...	Command-Shift-w	Make Horizontal Stem	Command-Shift-h	Previous Character	Command-[	Set Metrics...	Command-Shift-m
Clean Up Paths...	Command-Shift-c	Make Vertical Serif	Command-Shift-y	Previous Kerning Pair	Command-;	Set Width...	Command-Shift-s
Close	Command-w	Make Vertical Stem	Command-Shift-v	Previous Point	Command-,	Show Points	Command-u
Copy	Command-c	Merge Points	Command-m	Previous Point Size	Command--	Snap to Grid	Command-Shift-i
Copy Reference	Command-g	New Font...	Command-n	Print...	Command-p	Snap to Guides	Command-Shift-g
Corner Point	Command-9	Next Character	Command-]	Quit	Command-q	Snap to Points	Command-Shift-n
Correct Path Direction	Command-Shift-k	Next Kerning Pair	Command-:	Recalc Bitmaps...	Command-Shift-r	Split Serif	Command-Shift-l
Curve Points	Command-8	Next Point	Command-/	Redo	Command-y	Tangent Point	Command-O
Cut	Command-x	Next Point Size	Command-=	Remove Overlap	Command-Shift-o	Transform...	Command-\
		Open Bitmap Window...	Command-j			Undo	Command-z

File	
New Font...	⌘N
Open Font...	⌘O
Close	⌘W
Save	⌘S
Save As...	
Revert	
Preferences...	⇧⌘P
Generate Font Files...	
Import	▶
Export	▶
Page Setup...	
Print...	⌘P
Quit	⌘Q

Edit	
Undo Move	⌘Z
Redo Move	⌘Y
Cut	⌘H
Copy	⌘C
Paste	⌘V
Clear	
Copy Widths	
Copy Reference	⌘G
Unlink Reference	
Select All	⌘A
Duplicate	⌘D
Clone	

View	
Preview	⌘L
✓ Show Points	⌘U
Magnification	▶
Next Character	⌘]
Next Kerning Pair	⌘'
Next Point	⌘/
Next Point Size	⌘=
Previous Character	⌘[
Previous Kerning Pair	⌘;
Previous Point	⌘,
Previous Point Size	⌘-
✓ Snap to Points	⇧⌘N
✓ Snap to Guides	⇧⌘G
✓ Snap to Grid	⇧⌘I

Element	
Transform...	⌘\
Arrange	▶
Font Info...	
Selection Info...	⌘I
Bitmap Info...	
Auto Trace...	⇧⌘T
Change Weight...	⇧⌘W
Clean Up Paths...	⇧⌘C
Expand Stroke...	⇧⌘E
Recalc Bitmaps...	⇧⌘R
Remove Overlap	⇧⌘O
Correct Path Direction	⇧⌘K
Clockwise	
Counterclockwise	
Blend Fonts...	
Multiple Master...	

Points	
Align Points	⌘E
Align Points to Grid	⇧⌘Q
Merge Points	⌘M
Retract BCPs	⌘R
Split Points	
Auto Curvature	⇧⌘U
Curve Point	⌘8
✓ Corner Point	⌘9
Tangent Point	⌘0
Set Basepoint...	⌘`
Reset Basepoint	⌘~

Metrics	
Auto Space...	
Auto Kern...	
Kerning Assistance...	
Metrics Assistance...	
Set Metrics...	⇧⌘M
Set Width...	⇧⌘S
Equalize Sidebearings	
Clear Kerning	

Windows	
Open Outline Window	⌘H
Open Bitmap Window	⌘J
Open Metrics Window	⌘K
Show Layers Palette	
✓ Show Tool Palette	
24 pt A[65] from TFForever	
A[65] from TFForever	
Metrics from TFForever	
✓ TFForever	

Hints	
Make Vertical Stem	⇧⌘U
Make Horizontal Stem	⇧⌘H
Make Vertical Serif	⇧⌘Y
Make Horizontal Serif	⇧⌘Z
Make Diagonal Hint	⇧⌘D
Build Serif	⇧⌘B
Split Serif	⇧⌘L
Flip Hint Direction	⇧⌘F
Hint Parameters...	⇧⌘J
Vertical Alignment Zones...	
Autohint	⇧⌘A

MACROMEDIA

# Fontographer

QUICK REFERENCE CARD