

LIVE THE BATTLES



Fight up to 16 players in massive online battles!

Fight as a soldier on the front lines where every weapon and vehicle you see is yours. Take the Empire head on or crush the Rebellion – by yourself or with an army behind you!



Pilot over 30 vehicles including AT-ACTs, X-wings and snowspeeders.



Battle on unique planets from the entire Star Wars saga.



Pick your side – Rebels, Imperials, clone troopers or battle droids.



Choose your weapon wisely – each soldier has different weapons and capabilities.



ASPYR



PANDEMIC

LucasArts and the LucasArts logo are registered trademarks of Lucasfilm Ltd. Star Wars Battlefront is a trademark of Lucasfilm Entertainment Company Ltd. Pandemic and the Pandemic logo are registered trademarks and/or trademarks of Pandemic Studios, LLC in the United States and/or in other countries respectively. © 2004, 2005 Lucasfilm Entertainment Company Ltd. or Lucasfilm Ltd. and © or TM as indicated. All rights reserved. The ratings icon is a registered trademark of the Entertainment Software Association. The Aspyr logo is a registered trademark of Aspyr Media, Inc. Mac and the Mac logo are trademarks of Apple Computer, Inc., registered in the U.S. and other countries. All other trademarks are the property of their respective owners. 10900-1MNA

STAR WARS BATTLEFRONT™



WARNING: PLEASE READ BEFORE INSTALLING OR USING THE SOFTWARE

PHOTOSENSITIVE SEIZURES

A very small percentage of people may possibly experience a seizure when exposed to certain light patterns, flashing lights or other visual images that appear in computer software games. If you, or anyone in your family, have an epileptic condition, consult your physician before installing or using the software. Even people who have no history of seizures or epilepsy may have an undiagnosed condition that can possibly cause a seizure while viewing a computer software game. Reported seizures may have a variety of symptoms, including lightheadedness, altered vision, eye or face twitching, nausea, headaches, jerking or shaking of arms and legs, disorientation, confusion, or any involuntary movement or convulsions.

If you experience any of these symptoms, IMMEDIATELY STOP PLAYING AND CONSULT A DOCTOR. Parents or guardians should watch for or ask their children if they are having any of the above symptoms – children and teenagers are reportedly more likely than adults to experience seizures from viewing computer software games.

INTERNET CONNECTION AND SYSTEM REQUIREMENTS FOR ONLINE PLAY

NOTICE: You will need to obtain an Internet connection (through a computer meeting the minimum system requirements) in order to play this game online. If you do not use an Internet connection, you cannot play the game online. Such Internet connection may require you to pay a separate fee.

TABLE OF CONTENTS

INSTALLATION	2
DEFAULT CONTROLS	3
INTRODUCTION	7
MAIN MENU	8
OPTIONS	8
CREATING A PROFILE	9
FIGHTING ACROSS THE BATTLEFRONT	9
GAME SCREEN	10
PAUSE SCREEN	11
MAP	11
COMMAND POST	12
REINFORCEMENTS	13
UNITS	14
VEHICLES	18
SINGLEPLAYER	19
HISTORICAL CAMPAIGN	19
GALACTIC CONQUEST	19
INSTANT ACTION	20
MULTIPLAYER	20
SAVING THE GAME	23
AWARDS	23
CREDITS	24
TECHNICAL SUPPORT	26
SOFTWARE LICENSE AND LIMITED WARRANTY ..	27

INSTALLATION

1. Insert *Star Wars Battlefront™* into your DVD-ROM drive.
2. Double-click the *Star Wars Battlefront* Installer. Follow the step-by-step instructions. The installer will automatically install *Star Wars Battlefront* to the location you request.
3. To start the game double-click the *Star Wars Battlefront* application on your hard drive with the *Star Wars Battlefront* disc in your DVD-ROM drive.

Important Note:

Always refer to the README file on the *Star Wars Battlefront* installation disc for the latest information about installing and playing your game. This file also has information for PowerBook and iBook users that will be especially helpful, as well as information on alternate controller configurations.

DEFAULT CONTROLS

INFANTRY

PRIMARY FIRE	LEFT MOUSE BUTTON
SECONDARY FIRE	RIGHT MOUSE BUTTON
JUMP	SPACE BAR
CROUCH	C
PRONE	X
ZOOM	Z / MOUSE BUTTON 3
PERSPECTIVE	Q
RELOAD	R
ENTER/EXIT	E
SQUAD: AT EASE	F1
SQUAD: FOLLOW ME	F2
SQUAD: MOVE OUT	F3
SQUAD: HOLD POSITION	F4
CYCLE PRIMARY WEAPON	F / MOUSE WHEEL
CYCLE SECONDARY WEAPON	G
CHAT	T
TEAM CHAT	Y
FORWARDS	W / UP ARROW
BACKWARDS	S / DOWN ARROW
STRAFE LEFT	A / LEFT ARROW
STRAFE RIGHT	D / RIGHT ARROW
PLAYER LIST	TAB
MAP	M

VEHICLE/TRANSPORT

PRIMARY FIRE	LEFT MOUSE BUTTON
SECONDARY FIRE	RIGHT MOUSE BUTTON
ZOOM	Z / MOUSE BUTTON 3
PERSPECTIVE	Q
RELOAD	R
ENTER/EXIT	E
SQUAD: GET IN	F1
SQUAD: GET OUT	F2
CYCLE SEAT POSITION	F / MOUSE WHEEL
CHAT	T
TEAM CHAT	Y
FORWARD	W / UP ARROW
BACKWARDS	S / DOWN ARROW
LEFT	A / LEFT ARROW
RIGHT	D / RIGHT ARROW
PLAYER LIST	TAB
MAP	M

STARFIGHTER

PRIMARY FIRE	LEFT MOUSE BUTTON
SECONDARY FIRE	RIGHT MOUSE BUTTON
TAKEOFF/LAND	SPACE BAR
ZOOM	Z / MOUSE BUTTON 3
PERSPECTIVE	Q
RELOAD	R
ENTER/EXIT	E
SQUAD: GET IN	F1
SQUAD: GET OUT	F2
CYCLE SEAT POSITION	F / MOUSE WHEEL
CHAT	T
TEAM CHAT	Y
THROTTLE UP	W / UP ARROW
THROTTLE DOWN	S / DOWN ARROW
LEFT	A
RIGHT	D
PLAYER LIST	TAB
MAP	M

STAR WARS

BATTLEFRONT™

INTRODUCTION

ARE YOU READY TO STEP ONTO THE BATTLEFRONT? *Star Wars Battlefront™* PUTS YOU IN THE ROLE OF A SOLDIER IN SOME OF THE GREATEST BATTLES IN THE HISTORY OF THE GALAXY. MAKE TACTICAL DECISIONS AND LEAD TROOPS WHILE FIGHTING ON THE VERY FRONTLINE OF BOTH THE CLONE WARS AND THE GALACTIC CIVIL WAR. CAPTURE KEY POSITIONS TO EXPAND YOUR CONTROL OF TERRITORY AND UTILIZE UNIQUE ADVANTAGES FROM EACH PLANET TO GIVE YOUR FORCES THE EDGE IN BATTLE. SPECIALIZE YOUR ROLE, BE IT SNIPING, PILOTING VEHICLES, OR SCOUTING. FINAL VICTORY WILL BE DECIDED NOT ONLY BY COURAGE AND SKILL, BUT ALSO BY TACTICS AND TEAMWORK. EMPLOY EVERY WEAPON YOU HAVE OR BECOME A STATISTIC IN THE GALACTIC DATABASE.

MAIN MENU

OPTIONS

GAME OPTIONS

VIEWPOINT

Allows you to choose between 1st or 3rd person viewpoint when playing as infantry.

FRIENDLY FIRE

Turn this ON or OFF to determine whether units on the same team can damage each other.

INSTANT ACTION HEROES

Turning this option ON or OFF determines if computer-controlled Heroes will be in Instant Action battles.

DIFFICULTY

Choose between Easy, Medium, and Hard. This affects all game types. In Online Multiplayer, the difficulty setting is determined by the Session Host, and will override your settings.

AUDIO OPTIONS

Here you can adjust the sound, music, and speech volumes in the game. You can also choose between various speaker settings.

CONTROLS

Here you can completely customize the controls, invert the Y-axis for aiming, and adjust the aiming sensitivity. You can create separate control schemes for Infantry, Vehicle, and Starfighter configurations.

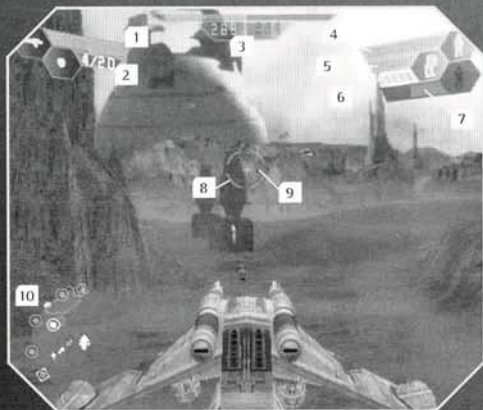
CREATING A PROFILE

When you first attempt to play a game, you will be prompted to create a profile. This profile will be used to save single player games and to save your option settings. Once you have created a profile you can then add more profiles, and delete or edit existing ones.

FIGHTING ACROSS THE BATTLEFRONT

Star Wars Battlefront offers multiple gameplay modes, each one centered around raging battles throughout the galaxy. On each planet the objective is to gain control of key areas called Command Posts (for more information on Command Posts, see page 12). Before entering the battle as a frontline troop or reinforcement, the player selects a character from several available classes, each with their own specialties. Once on the battlefield, you must help advance your army by defeating enemy units and taking their Command Posts, which in turn reduces their ability to field reinforcements. Each mission will have its own requirements for victory, but the key to gaining the advantage is tactical control of the map's Command Posts.

GAME SCREEN



- 1 Primary Weapon/Ammo** The light blue silhouette indicates what weapon you have equipped along with the shots left in your clip plus total shots remaining. If the weapon has recharging capabilities the ammo is represented by a bar that refills automatically. Using some weapons or abilities causes them to overheat. Each weapon's energy bar recharges over time. If it turns red you will be unable to use that ability until it turns blue.
- 2 Secondary Weapon/Ammo** The light blue silhouette indicates what weapon you have equipped along with the shots left in your clip plus total shots remaining.
- 3 Reinforcement Meter** The numbers and bars represent the strength of reinforcements for each faction. The player's faction is Green, the enemy is Red. For more information, see Reinforcements, page 14.
- 4 Health** Represents how much damage you can take before you become just another casualty on the battlefield.
- 5 Vehicle Armor/Unit Shields** A bar will appear here representing the remaining armor of the vehicle if you occupy one, or remaining shields if your unit has a shield active.
- 6 Vehicle Position Indicator** These pips represent available positions within a vehicle. The first pip is always the pilot/driver position. Other pips are gunner positions. Unoccupied positions are clear. A White Pip represents the player, Green pips represent other human players, and Yellow pips represent AI players.
- 7 Enemy Health** This appears when you have an enemy targeted.
- 8 Targeting Reticle** When the reticle is pointed at a friendly character, it will turn Green; if pointed at an enemy it will turn Red.
- 9 Successful Hit Indicator** When you score a hit on a target, this ring will appear for a moment. Pay attention to this, as it will help you gauge your accuracy. A Green hit indicator means you hit a friendly, Red means an enemy hit, and Blue means a hit to an unoccupied vehicle or destructible object.
- 10 Map** See page 11 for information.

PAUSE SCREEN

Press ESC to pause the game. Here you can access several options:

RESUME GAME

Select this to return to the action.

RESTART MISSION

Starts the mission from the beginning.

OPTIONS

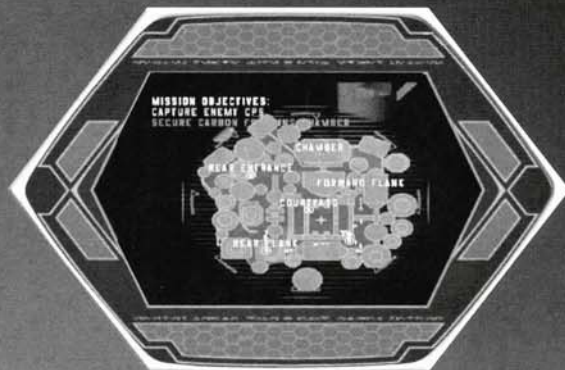
Allows access to the same options available from the Main Menu.

QUIT

Return to the current game mode's menu.

MAP

This displays your location relative to the environment. The large white arrow designates your position and facing, while green arrows indicate friendly units and red arrows indicate enemies. Yellow arrows represent native species, which may or may not be hostile depending on your faction. The arrows representing units will flash if they are taking damage. Command Posts appear as ringed dots, colored green for friendly, red for enemy, yellow for native, and white for neutral. Objects that can be used as cover appear light blue. Turrets appear as white dots with a line indicating facing. Unoccupied vehicles appear as white silhouettes; occupied vehicles are silhouettes with the appropriate color.



The map spins to orient its position relative to the player's facing when in the default mode. When the map is enlarged (by pressing the M key), it remains static regardless of the player's facing.

Command Posts are always displayed even if they are beyond the radius of the map. They will appear at the edge of the map indicating the direction the player will need to travel to get to them.

By pressing the M key the map will expand to full screen and show the entire battlefield and all Command Posts. Pressing the M key again will place the map back to its original default position.

COMMAND POSTS

Each battlefield contains tactical positions placed in key locations across the map. These areas of control are called Command Posts and they are vital because:

- Reinforcements are deployed at Command Posts. Whenever a player dies, he rejoins the battle by choosing a friendly Command Post to deploy. Therefore, if a team has no Command Posts under its control, it cannot deploy any reinforcements until it recaptures a Command Post.
- If a team controls the majority of the Command Posts on a map, the opposing team will start to lose reinforcements automatically. If a team controls all of the Command Posts on a map, a victory timer will start counting down.

COMMAND POST OWNERSHIP

Command Posts with a green symbol always belong to your team; Command Posts with red symbols belong to the enemy and Command Posts with yellow symbols belong to native units. Command Posts with a white column are neutral and belong to no one.

To capture an enemy or neutral command post, you must stand within its capture radius. You will know you are close enough if the capture icon appears on the screen. If there are no enemy units nearby, the capture icon will slowly change color from red to white to green. When the capture icon is completely green, the Command Post will now belong to your team.

The rate of capture will increase if you have additional friendly units nearby. If there are enemy units nearby, the capture icon will alternate

between green and red until one side is driven off. You cannot capture a Command Post if you're in a vehicle.

Some Command Posts belong to one team only and cannot be captured by the opposing team. However, they can be destroyed by weapons fire; these destructible Command Posts can only be repaired by human players. Destructible Command Posts appear on the map as diamonds instead of circles.

Certain vehicles, such as the Imperial AT-AT, are Mobile Command Posts. Mobile Command Posts deploy reinforcements just like stationary Command Posts; the only difference is that they can bring troops to any point on the battlefield. Mobile Command Posts cannot be captured by the enemy team but they can be destroyed. If destroyed, they will reappear after a set amount of time.

REINFORCEMENTS

Reinforcement Points represent the number of the reinforcements that each team has for an individual battle. The number of reinforcements for both teams is displayed in the reinforcement meter at the top of the screen. The green bar represents your team's reinforcements while the red bar displays the amount of enemy reinforcements.

Units can continue to join the game as long as two conditions are met: there are reinforcements left for that team; and that team controls at least one Command Post.



When a unit dies, it takes one point off its team's reinforcement total. Even if there is only one reinforcement point left, any number of units can still deploy to valid Command Posts. However, if one faction's Reinforcement Points reaches zero, then they lose the battle.

Reinforcements are deployed according to a reinforcement timer. For single player games, there is no timer and you can deploy immediately after dying. For multiplayer games, the reinforcement timer varies with the map. The reinforcement timer counts down from ten to fifteen seconds; when it reaches zero, reinforcements are deployed for both teams. In other words, if you die in a multiplayer game, you will have to wait between one to fifteen seconds before you redeploy at a friendly Command Post.

When the number of reinforcements for a team matches the number of units it has on the field, that team will no longer lose reinforcements automatically. This is true even if that team has two or less Command Posts in its possession. This is done to make sure that victory is earned by defeating all enemy units in combat or by capturing and holding all the Command Posts on a map. In addition, AI units will no longer respawn when killed at this stage of the game. This rule provides human players with the most opportunities to affect the outcome of the game.

UNITS



REBEL ALLIANCE



REBEL SOLDIER

The Rebel soldier is effective against infantry, especially when they employ squad-based tactics. Equipment: blaster rifle, blaster pistol, thermal detonators, and concussion grenades.

REBEL VANGUARD

Vanguards are called upon to punch holes in an Imperial vehicle brigade. The heavy weapons they carry provide the means to take down menacing enemy air and ground vehicles. Equipment: missile launcher, blaster pistol, thermal detonators, and mine dispenser.

REBEL PILOT

Rebel pilots automatically regenerate the health of whatever vehicle they occupy and are capable of repairing damaged vehicles, droids and turrets. They also serve as battlefield medics and ammo suppliers. Equipment: blaster cannon, blaster pistol, fusion cutter, and health\ammo dispenser.

WOOKIEE SMUGGLER

Whenever there is a need to slip past an Imperial fleet undetected, just look

for a smuggler. For a fee, the smuggler is willing to take the risk of running contraband right under the Emperor's nose. Equipment: bowcaster, grenade launcher, and time bombs.

REBEL MARKSMAN

Rebel marksmen have the specialized task of finding and eliminating targets from a safe location. Their recon droids are capable of ordering deadly orbital strikes on enemy positions. Equipment: sniper rifle, blaster pistol, thermal detonators, and recon droid.



GALACTIC EMPIRE



STORMTROOPER

The iron will of the Emperor is personified in the stark white armor of the feared stormtrooper. They are highly disciplined and fanatically loyal to the Emperor, making them an excellent front line assault force. Equipment: blaster rifle, blaster pistol, thermal detonators, and concussion grenades.

SHOCK TROOPER

The shock trooper offers powerful support to the blaster-based troops by carrying a small portable missile launcher. This weapon fires explosive charges that are highly effective against vehicles or tight formations of infantry. Equipment: missile launcher, blaster pistol, thermal detonators, and mine dispenser.

IMPERIAL PILOT

Imperial pilots automatically regenerate the health of whatever vehicle they

occupy and are capable of repairing damaged vehicles, droids and turrets. They also serve as battlefield medics and ammo suppliers. Equipment: mortar launcher, blaster pistol, fusion cutter, and health\ammo dispenser.

SCOUT TROOPER

Scout troopers use concealment, probe droids and patience to target faraway enemies and eliminate them with their high-powered sniper rifles. Their recon droids can call down orbital strikes from the mighty Imperial fleet. Equipment: sniper rifle, blaster pistol, thermal detonators, and recon droid.

DARK TROOPER

Dark troopers use their jetpacks to "jump" to their targets. Once in position, they will attempt to do as much damage as possible. Equipment: blast cannon, blaster pistol, and thermal detonator.



REPUBLIC

**CLONE TROOPER**

Perfect genetic creations, the clone troopers are the backbone of the Republic Army. They are most effective against infantry units when they can attack in large, coordinated numbers. Equipment: blaster rifle, blaster pistol, EMP grenades, and concussion grenades.

ARC TROOPER

The Advanced Recon Commando, or ARC trooper, handles the anti-vehicle battlefield duties of the Republic Army. To this end, the ARC trooper carries a powerful missile launcher. This specialization leaves the trooper with fewer options in close combat, so he relies on his brethren to protect him. Equipment: missile launcher, blaster pistol, thermal detonators, and mine dispenser.

CLONE PILOT

Clone pilots automatically regenerate the health of whatever vehicle they occupy and are capable of repairing

damaged vehicles, droids and turrets. They also serve as battlefield medics and ammo suppliers. Equipment: DN boltcaster, blaster pistol, fusion cutter, and health/ammo dispenser.

CLONE SHARPSHOOTER

On the battlefield, the clone sharpshooter is responsible for one task: disrupting enemy infantry. His recon droid is also capable of calling down devastating orbital strikes on the enemy. Equipment: sniper rifle, blaster pistol, thermal detonators, and recon droid.

JET TROOPER

Capitalizing on the "genetic memory" of Jango Fett, the jet trooper utilizes a limited-flight jetpack to cover great distances very quickly. The agility of the flying jet trooper makes him very hard to hit, and his EMP launcher is a deadly weapon against the droid armies. Equipment: EMP launcher, commando pistol, and thermal detonators.



CIS

**SUPER BATTLE DROID**

After the debacle at the Battle of Naboo, the Trade Federation ordered a stronger, more independent battle droid, officially designated the B2. Resembling hulked, reinforced battle droids, super battle droids are far superior to their skeletal-looking counterparts. Equipment: wrist blaster, tri shot, and wrist rocket.

ASSAULT DROID

Under the control of the Separatists, assault droids serve as a cheap yet effective solution to the fast-moving threat of Republic vehicles. Essentially mobile missile launchers, these droids allow the Separatists to handle tough situations. Equipment: missile launcher, blaster pistol, thermal detonators, and mine dispenser.

PILOT DROID

Pilot droids automatically regenerate the health of whatever vehicle they occupy and are capable of repairing damaged vehicles, droids and turrets.

They also serve as battlefield medics and ammo suppliers. Equipment: radiation launcher, blaster pistol, fusion cutter, and health/ammo dispenser.

DROID SNIPER

Recon droids are specifically programmed and designed with advanced targeting capabilities that allow them to take down targets at extreme range. Their recon droids can

also bring down orbital strikes on Republic troops. Equipment: sniper rifle, blaster pistol, thermal detonators, and recon droid.

DROIDEKA (DESTROYER DROID)

Even feared by Jedi Knights, the crab-like droideka is equipped with a personal shield and two powerful repeating blasters instead of arms. The droideka transforms into a wheel in order to cruise rapidly around the battlefield. Equipment: repeating blasters and shield emitter.

VEHICLES

There are several distinct classes of vehicles that can be piloted, ranging from fast speeder bikes to fearsome AT-AT walkers.

Scattered throughout the map are Vehicle Repair Droids. Just approach one of these to have your armor repaired and ammo refilled automatically.

TYPES OF VEHICLES

SCOUT VEHICLES

This type of ground vehicle is fast and light. They can zip across the battlefield at great speed and are not meant for heavy combat. They are armed and armored, but only lightly to give some minimal protection. This type includes the 74-Z speeder bike and the STAP.

MEDIUM ASSAULT VEHICLES

These vehicles have heavier weapons and armor, and are slower than the Scout craft, but they pack more power and durability. This type includes the Rebel combat landspeeder, TX-1305 fighter tank, AAT, and hailfire droid.

HEAVY ASSAULT VEHICLES

These vehicles are even more heavily armed and armored, and are used at the front of most assaults. This type includes the spider droid and AT-ST.

HEAVY ASSAULT TRANSPORT

These lumbering behemoths can unload devastating amounts of firepower on a target, as well as serving as mobile Command Posts. This type includes the AT-TE, AT-AT, and MTT.

STARFIGHTERS

These craft are fast, maneuverable starfighters. They have forward firing blasters and a small complement of missiles. Their primary purpose is to provide cover for enemy troops on the field below and keep the skies clear of enemy craft. This type includes the Jedi starfighter, droid starfighter, X-wing, TIE fighter, Y-wing, TIE bomber, and Geonosian starfighter.

ATTACK TRANSPORT FLYERS

This type acts as attack craft and troop transports in battle. They also provide some limited anti-air support, but are outmaneuvered by the smaller starfighters. This type includes the Republic Gunship and MAF.

SINGLEPLAYER

HISTORICAL CAMPAIGN

The Historical Campaign allows you to experience battles from either the Clone Wars or the Galactic Civil War. You begin by choosing which era, and then work your way through missions in chronological order. This mode also unlocks bonus items as you progress through it.

GALACTIC CONQUEST

In this mode the player uses strategy to take control of planets and dominate an area of the galaxy. First you choose a map configuration based on conflicts from both eras of *Star Wars*® history. Some maps start both sides evenly and some favor one faction. Then you choose which faction you would like to play.

The game is played in turns, with the player starting with initiative. When you have initiative you are able to choose which planet to attack. The battle then takes place in the same manner as the other game modes. If you are victorious, you maintain initiative and may select another planet to attack. If your enemy wins a battle, it will then be able to choose where to attack until you again win a battle.



Once you have gained complete control of a planet by winning a battle there, you then gain the ability to use the planet's bonus. Each planet provides its own unique bonus, so choose your attacks wisely. After attaining access to one or more of these bonuses, you may select one bonus from the planets you control, which will then apply during the current battle.

If one side manages to win four battles (not necessarily in a row), they gain access to their faction's Secret Base bonus. The Secret Base bonuses are very powerful and change the course of a game. They can be used on any enemy planet except for the enemy's Secret Base.

The game is completed when one faction controls all of the planets on the map.

INSTANT ACTION

This mode allows you to jump right into a battle of your choice. You can also customize a list of battles that will then be played through in the order you designate.

MULTIPLAYER

Network play with the GameRanger software.

Note: You have to download the GameRanger software from www.gameranger.com. This is a free download.

LAN

Select this option if you want to connect to a game on your Local Area Network. From here you will be presented with several different choices:

When you select this option you will first pick whether you want to create a game or join a game. If you select Join the game it will take a few moments to bring up the list of available multiplayer games. This generally should take no longer than 30 seconds. Check to make sure there are no connection problems if it takes longer.

In the game list there are several categories to describe each game:

IN/MAX: Shows the number of players currently in the game, and the total possible players

GAME NAME: Shows the name of the game, has set by the host

SERVER: Shows the server type (Mac Dedicated or Mac). Dedicated servers will generally run better than non dedicated. Faster ping results in faster response times between the player's actions and when they occur in game. A server with fast ping will show green bars, while slower ping will indicate yellow or red bars. If a server is password locked, a padlock icon will appear next to the ping indicator.

When highlighting a particular game, the game options set by the host will be displayed in the window below the game list.

CREATE: When choosing to host a game, you first must enter a name for it. The default name is based upon your profile name. You will then be prompted to select a map or series of maps. Finally, you may set the game options:

Dedicated Server: Toggles running dedicated/non-dedicated mode.

Max Players: Allows you to set the maximum number of players allowed in the game.

AI Units Per Team: Allows you to set the number of AI-controlled units fighting for each team.

Team Damage: Toggles the ability for players to cause damage to teammates.

Show Player Names: Toggles the display of player names over their characters in the game.

Heroes: Toggles the inclusion of an AI-controlled hero for each team. The hero is invincible and can pose a significant threat on the battlefield.

Teams: This can be toggled between Auto Assign, which automatically evenly distributes players between the two teams as they join the game; or Player Select, which allows players to choose their team when they join.

AI Difficulty Level: Select between Easy, Medium, and Hard to change the effectiveness of AI units.

Min Players to Start: Sets the minimum number of players that need to join before the game begins. The AI units will not begin fighting until the minimum number of players has joined.

Password: Select this option if you want to require a password to join your game.

GAMERANGER

To install GameRanger:

1. Go to www.gameranger.com
2. Click on "download and play!"
3. Once you have downloaded the software, open the new GameRanger folder and double-click the GameRanger icon.
4. GameRanger will now update and prompt you to set up an account.

Follow the prompts to set up and activate your account.

To play a game in GameRanger:

1. Launch GameRanger.
2. Decide whether you would like to Host or Join a game.
3. To host:
 - A. Click the "Host" button
 - B. Set the game you want and the options for the game.
 - C. Click "OK"
 - D. Once you have some players, start your game.
4. To Join:
 - A. Pick a game you'd like to join from the list.
 - B. Double click the game in the list, or click it and then click "Join"

Once the game begins, play as normal with your online opponents.

SAVING THE GAME

The game will automatically save your game when completing a mission in the Historical Campaign or Galactic Conquest modes. Upon returning to a Historical Campaign game, there is no need to load the save; instead all unlocked battles will be available automatically when choosing your era. In Galactic Conquest, you are able to select a new game or load a save from a previous map.

AWARDS

Along with being able to review the number of kills, deaths, and Command Posts captured for each player after a battle, awards are also given to players who make certain achievements. They include the following:

TANK BUSTER: This honor is bestowed upon the player with most vehicle kills.

DEAD EYE: This award is given for the most accurate player.

CAMPER: Denotes the player that staked out a location the most during a game.

BANTHA FODDER: The title of the player that was killed the most in the session.

PUBLIC ENEMY: Awards the most kills by a player in one lifetime.

KILLING SPREE: Won by the person who had the most kills within a five second window.

SURVIVALIST: The player who got down to less than 10% health and was healed back to full.

TRAITOR: Declares the infamous person who killed the most teammates during a game.

BAIT: Denotes the player that you personally killed the most during play.

NEMESIS: This stat declares the opponent that killed you the most during a game.

TECHNICAL SUPPORT

You should read through the manual and the Readme file on the CD before contacting Aspyr. Please ensure that your computer meets the minimum system requirements that are listed on the bottom of the box.

Our Technical Support representatives will not be able to help customers whose computers do not meet these requirements. So that we can better help you, please have the following information ready:

- Complete product title
- Exact error message reported (if any)
- A brief description of the problem
- Your computer's processor type and speed (iMac 700 Mhz, PowerBook 1Ghz, etc.)
- Amount of RAM (MB, GB)
- Make and model of your video card (ATI, NVIDIA)
- Speed of your CD-ROM or DVD-ROM (16x, 4x)
- Operating System (10.2.8, 10.3.4)

NOTE

Please do not contact Technical Support for hints/codes/cheats: only technical issues.

CONTACT US OVER THE INTERNET:

If, after reviewing all the known issues in this Read Me file, you are still having difficulties, please visit our online technical support page at www.aspyr.com/support. If your problem is not currently listed, then please gather all information regarding the problem, including attempts to resolve the problem, error messages, and computer specifications and fill out the detailed support form located at www.aspyr.com/contact. This form will then be sent to Aspyr Media Technical Support.

CONTACT US BY PHONE:

You can also contact us by phone by calling (512) 708-8100. Note that this number is for technical assistance only. No hints and tips will be given out over the Technical Support line. When calling our Technical

Support line, please make sure you are in front of your computer and prepared to provide all necessary information about your computer. You can also contact Aspyr Technical Support using one of the following options:

Aspyr Media, Inc. P.O. Box 5861
Austin, TX 78763-5861
Fax: (512) 708-9595

SOFTWARE LICENSE AND LIMITED WARRANTY

IMPORTANT - READ CAREFULLY: YOUR USE OF *Star Wars Battlefront™* IS SUBJECT TO THE SOFTWARE LICENSE TERMS SET FORTH BELOW. THE "PROGRAM" INCLUDES ALL SOFTWARE INCLUDED WITH THIS AGREEMENT, THE ASSOCIATED MEDIA, ANY PRINTED MATERIALS, AND ANY ON-LINE OR ELECTRONIC DOCUMENTATION, AND ANY AND ALL COPIES OF SUCH SOFTWARE AND MATERIALS. BY OPENING THIS PACKAGE, INSTALLING, AND/OR USING THE PROGRAM AND ANY SOFTWARE PROGRAMS INCLUDED WITHIN THE PROGRAM, YOU ACCEPT THE TERMS OF THIS LICENSE WITH ASPYR. ("ASPYR").

LIMITED USE LICENSE: Subject to the conditions described below, Aspyr grants you the non-exclusive, non-transferable, limited right and license to install and use one copy of the Program solely and exclusively for your personal use. All rights not specifically granted under this Agreement are reserved by Aspyr and, as applicable, Aspyr's licensors. The Program is licensed, not sold, for your use. Your license confers no title or ownership in the Program and should not be construed as a sale of any rights in the Program. All rights not specifically granted under this Agreement are reserved by Aspyr and, as applicable, its licensors.

OWNERSHIP: All title, ownership rights and intellectual property rights in and to the Program and any and all copies thereof are owned by Aspyr, and/or Aspyr's other licensors. The Program is protected by the copyright laws of the United States, international copyright treaties and conventions and other laws. The Program contains certain licensed materials and Aspyr may protect their rights in the event of any violation of this Agreement. You agree not to remove, disable or circumvent any proprietary notices or labels contained on or within the Program.

LIMITED WARRANTY: Aspyr Media warrants the original purchaser that this disc is free from defects and materials and workmanship for a period of ninety (90) days from the date of purchase. Aspyr Media will, at its option, repair or replace this disc, free of charge, postage

paid with proof of date of purchase, at its offices. EXCEPT AS SET FORTH ABOVE, THIS WARRANTY IS IN LIEU OF ALL OTHER WARRANTIES, WHETHER ORAL OR WRITTEN, EXPRESS OR IMPLIED, INCLUDING ANY WARRANTY OF MERCHANTABILITY, FITNESS FOR A PARTICULAR PURPOSE OR NON-INFRINGEMENT, AND NO OTHER REPRESENTATIONS OR CLAIMS OF ANY KIND SHALL BE BINDING ON OR OBLIGATE ASPYR. When returning the Program for warranty replacement please send the original product disks only in protective packaging and include: (1) a photocopy of your dated sales receipt; (2) your name and return address typed or clearly printed; (3) a brief note describing the defect, the problem(s) you are encountered and the system on which you are running the Program; (4) if you are returning the Program after the 90-day warranty period, but within one year after the date of purchase, please include check or money order for \$10 U.S. currency per CD replacement. Note: Certified mail recommended. In the U.S. send to: Warranty Replacements Aspyr Media, Inc. PO Box 5861, Austin, Texas 78763

LICENSE CONDITIONS

You agree not to:

- Exploit the Program or any of its parts commercially, including but not limited to use at a cyber cafe, computer gaming center or any other location-based site. Aspyr may offer a separate Site License Agreement to permit you to make the Program available for commercial use; see the contact information below.
- Sell, rent, lease, license, distribute or otherwise transfer this Program, or any copies of this Program, without the express prior written consent of Aspyr.
- Use the Program, or permit use of the Program, in a network, multi-user arrangement or remote access arrangement, including any on-line use, except as otherwise specifically provided by the Program.
- Use the Program, or permit use of the Program, on more than one computer, computer terminal, or workstation at the same time.
- Make copies of the Program or any part thereof, except for back up or archival purposes, or make copies of the materials accompanying the Program.
- Copy the Program onto a hard drive or other storage device; you must run the Program from the included DVDROM (although the Program itself may automatically copy a portion of the Program onto your hard drive during installation in order to run more efficiently).
- Reverse engineer, derive source code, modify, decompile, or disassemble the Program, in whole or in part.
- Remove, disable or circumvent any proprietary notices or labels contained on or within the Program.
- Export or re-export the Program or any copy or adaptation thereof in violation of any applicable laws or regulations.

This game and manual are each a work of fiction. All of the characters, events, locations, logos, and entities portrayed or depicted are fictional. Any resemblance to real persons, living or dead, or actual events is purely coincidental.

LucasArts and the LucasArts logo are registered trademarks of Lucasfilm Ltd. Star Wars Battlefront is a trademark of Lucasfilm Entertainment Company Ltd. © 2004-2005 Lucasfilm Entertainment Company Ltd. or Lucasfilm Ltd. Et ® or TM as indicated. All rights reserved.

Online play subject to terms of use as may be available online at www.starwarsbattlefront.com

