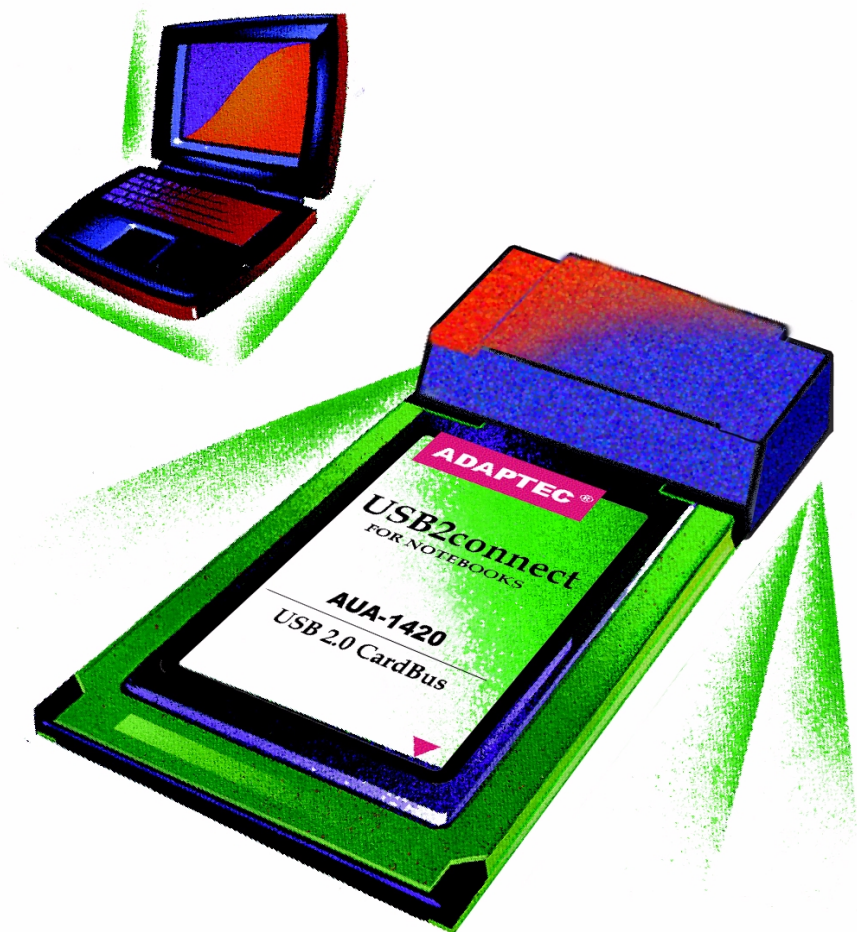




USER'S GUIDE



AUA-1420
USB2CONNECT FOR NOTEBOOKS ADAPTER

Copyright

© 2001-2002 Adaptec, Inc. All rights reserved. No part of this publication may be reproduced, stored in a retrieval system, or transmitted in any form or by any means, electronic, mechanical, photocopying, recording or otherwise, without the prior written consent of Adaptec, Inc., 691 South Milpitas Blvd., Milpitas, CA 95035.

Trademarks

Adaptec, the Adaptec logo, USB2connect for Notebooks, and AUA are trademarks of Adaptec, Inc., which may be registered in some jurisdictions.

Windows, Windows 2000, and Windows Me, and Windows 98, are trademarks of Microsoft Corporation in the U.S. and other countries, used under license.

Macintosh is a registered trademark of Apple Computer, used under license.

All other trademarks are the property of their respective owners.

Changes

The material in this document is for information only and is subject to change without notice.

While reasonable efforts have been made in the preparation of this document to assure its accuracy, Adaptec, Inc. assumes no liability resulting from errors or omissions in this document, or from the use of the information contained herein.

Adaptec reserves the right to make changes in the product design without reservation and without notification to its users.

Disclaimer

IF THIS PRODUCT DIRECTS YOU TO COPY MATERIALS, YOU MUST HAVE PERMISSION FROM THE COPYRIGHT OWNER OF THE MATERIALS TO AVOID VIOLATING THE LAW WHICH COULD RESULT IN DAMAGES OR OTHER REMEDIES.

Adaptec Customer Support

If you have questions about installing or using your Adaptec product, check this document first—you will find answers to most of your questions here. If you need further assistance, use the support options listed below.

Technical Support Identification (TSID) Number

- Before contacting Technical Support, you'll need your TSID. The TSID helps us provide more efficient service by accurately identifying your product and support status. The 12-digit TSID can be found on the white barcode-type label included inside the box with your product.
- Affix your TSID label to the CD jacket included in your kit.

Support Options

- Search the Adaptec Support Knowledgebase (ASK) at <http://ask.adaptec.com> for articles, troubleshooting tips, and frequently asked questions for your product.
- For support via Email, submit your question to Adaptec's Technical Support Specialists at <http://ask.adaptec.com>.

North America

- Visit our Web site at <http://www.adaptec.com>.
- For information about Adaptec's support options, call +1 408-957-2550, 24 hours per day, 7 days per week. To speak with a Technical Support Specialist,
 - For **Hardware** products call +1 408-934-7274,
Monday to Friday, 3:00 A.M. to 5:00 P.M., Pacific Time.
 - For **RAID and Fibre Channel** products call +1 321-207-2000
Monday to Friday, 3:00 A.M. to 5:00 P.M., Pacific Time.To expedite your service, have your computer in front of you.
- To order Adaptec products, including accessories and cables, call +1 408-957-7274.

Europe

- Visit our Web site at <http://www.adaptec-europe.com>.
- **English and French:** To speak with a Technical Support Specialist, call one of the following numbers, Monday to Thursday, 10:00 to 12:30 and 13:30 to 17:30; Friday, 10:00 to 12:30 and 13:30 to 16:30, Central European Time:
 - **English:** +32 2 352 3470
 - **French:** +32 2 352 3460To expedite your service, have your computer in front of you.
- **German:** To speak with a Technical Support Specialist, call +49 89 456 40660, Monday to Thursday, 9:30 to 12:30 and 13:30 to 16:30; Friday, 9:30 to 12:30 and 13:30 to 15:00, Central European Time. To expedite your service, have your computer in front of you.
- To order Adaptec products, including accessories and cables, call +32 11 300 379.

Australia and New Zealand

- Visit our Web site at <http://www.adaptec.com.au>.
- To speak with a Technical Support Specialist, call +612 9416 0698, Monday to Friday, 10:00 A.M. to 4:30 P.M., Eastern Australia Time. To expedite your service, have your computer in front of you.

Hong Kong and China

- Visit our Web site at <http://www.adaptec.com>.
- To speak with a Technical Support Specialist, call +852 2869 7200, Monday to Friday, 10:00 A.M. to 5:00 P.M. To expedite your service, have your computer in front of you.
- Fax Technical Support at +852 2869 7100.

Singapore

- Visit our Web site at <http://www.adaptec.com>.
- To speak with a Technical Support Specialist, call +65 245 7470, Monday to Friday, 10:00 A.M. to 5:00 P.M. To expedite your service, have your computer in front of you.

Japan

- Visit our Web site at <http://www.adaptec.co.jp>.
- To speak with a Technical Support Specialist, call +81 3 5308 6120 Monday–Friday, 9:00 A.M. to 12:00 P.M. and 1:00 P.M. to 6:00 P.M.

Limited 5-Year Hardware Warranty

1. Adaptec, Inc. ("Adaptec") warrants to the purchaser of this product that it will be free from defects in material and workmanship for a period of five (5) years from the date of purchase. If the product should become defective within the warranty period, Adaptec, at its option, will repair or replace the product, or refund the purchaser's purchase price for the product, provided it is delivered at the purchaser's expense to an authorized Adaptec service facility or to Adaptec.
2. Repair or replacement parts or products will be furnished on an exchange basis and will either be new or reconditioned. All replaced parts or products shall become the property of Adaptec. This warranty shall not apply if the product has been damaged by accident, misuse, abuse or as a result of unauthorized service or parts.
3. Warranty service is available to the purchaser by delivering the product during the warranty period to an authorized Adaptec service facility or to Adaptec and providing proof of purchase price and date. The purchaser shall bear all shipping, packing and insurance costs and all other costs, excluding labor and parts, necessary to effectuate repair, replacement or refund under this warranty.
4. For more information on how to obtain warranty service, write or telephone Adaptec at 691 South Milpitas Boulevard, Milpitas, CA 95035, (800) 959-7274.
5. THIS LIMITED WARRANTY DOES NOT EXTEND TO ANY PRODUCT WHICH HAS BEEN DAMAGED AS A RESULT OF ACCIDENT, MISUSE, ABUSE, OR AS A RESULT OF UNAUTHORIZED SERVICE OR PARTS.
6. THIS WARRANTY IS IN LIEU OF ALL OTHER EXPRESS WARRANTIES WHICH NOW OR HEREAFTER MIGHT OTHERWISE ARISE RESPECT TO THIS PRODUCT. IMPLIED WARRANTIES, INCLUDING THOSE OF MERCHANTABILITY, FITNESS FOR A PARTICULAR PURPOSE AND NON-INFRINGEMENT SHALL (A) HAVE NO GREATER DURATION THAN 5 YEARS FROM THE DATE OF PURCHASE, (B) TERMINATE AUTOMATICALLY AT THE EXPIRATION OF SUCH PERIOD AND (C) TO THE EXTENT PERMITTED BY LAW BE EXCLUDED. IN THE EVENT THIS PRODUCT BECOMES DEFECTIVE DURING THE WARRANTY PERIOD, THE PURCHASER'S EXCLUSIVE REMEDY SHALL BE REPAIR, REPLACEMENT OR REFUND AS PROVIDED ABOVE. INCIDENTAL OR CONSEQUENTIAL DAMAGES, INCLUDING WITHOUT LIMITATION LOSS OF DATA, ARISING FROM BREACH OF ANY EXPRESS OR IMPLIED WARRANTY ARE NOT THE RESPONSIBILITY OF ADAPTEC AND, TO THE EXTENT PERMITTED BY LAW, ARE HEREBY EXCLUDED BOTH FOR PROPERTY DAMAGE, AND TO THE EXTENT NOT UNCONSCIONABLE, FOR PERSONAL INJURY DAMAGE.
7. SOME STATES DO NOT ALLOW THE EXCLUSION OR LIMITATION OF INCIDENTAL OR CONSEQUENTIAL DAMAGES FOR CONSUMER PRODUCTS, AND SOME STATES DO NOT ALLOW LIMITATIONS ON HOW LONG AN IMPLIED WARRANTY LASTS, SO THE ABOVE LIMITATION OR EXCLUSIONS MAY NOT APPLY TO YOU.
8. This warranty gives you specific legal rights, and you may also have other rights which vary from state to state.

Adaptec Software License Agreement

PLEASE READ CAREFULLY: THE USE OF THIS SOFTWARE IS SUBJECT TO THE SOFTWARE LICENSE TERMS OF ADAPTEC, INC. AND OTHER LICENSORS WHOSE SOFTWARE MAY BE BUNDLED WITH THIS PRODUCT.

BY YOUR USE OF THE SOFTWARE INCLUDED WITH THIS PRODUCT YOU AGREE TO THE LICENSE TERMS REQUIRED BY THE LICENSOR OF THAT SOFTWARE, AS SET FORTH DURING THE INSTALLATION PROCESS. IF YOU DO NOT AGREE TO THE LICENSE TERMS APPLICABLE TO THE SOFTWARE, YOU MAY RETURN THE ENTIRE UNUSED PRODUCT FOR A FULL REFUND.

In return for acquiring a license to use the Adaptec software ("Software") and the related documentation, you agree to the following terms and conditions:

1. License. This Agreement grants you, the Licensee, a license to:
 - a. Use the Software on a single computer system or on multiple workstations, systems and servers which incorporate an Adaptec RAID controller and may be accessed by multiple users from multiple locations. You may make as many installations of the Software as needed, but must restrict such installation only to systems, workstations or servers using an Adaptec RAID controller.
 - b. Make one copy of the Software in machine readable form solely for back-up purposes provided you reproduce Adaptec's copyright notice and any proprietary legends.
2. Restrictions. You may not distribute copies of the Software to others. You may not post or otherwise make available the Software, or any portion thereof, in any form, on the Internet. You may not use the Software in a computer service business, including in time sharing applications. The Software contains trade secrets and, in order to protect them, you may not decompile, reverse engineer, disassemble, or otherwise reduce the Software to a human-perceivable form. YOU MAY NOT MODIFY, ADAPT, TRANSLATE, RENT, LEASE, LOAN, RESELL FOR PROFIT, DISTRIBUTE, NETWORK OR CREATE DERIVATIVE WORKS BASED UPON THE SOFTWARE OR ANY PART THEREOF.
3. Ownership of Software. As Licensee, you own the media upon which the software is recorded or fixed, but Adaptec and its licensors retain title and ownership of the Software recorded on the original media and all subsequent copies of the Software, regardless of the form or media in which or on which the original and other copies may exist. This license is not a sale of the Software or any copy.
4. Confidentiality. You agree to maintain the Software in confidence and that you will not disclose the Software to any third party without the express written consent of Adaptec. You further agree to take all reasonable precautions to preclude access of unauthorized persons to the Software.
5. Term. This license is effective until January 1, 2045, unless terminated earlier. You may terminate the license at any time by destroying the Software (including the related documentation) together with all copies or modifications in any form. Adaptec will have the right to terminate our license immediately if you fail to comply with any term or condition of this Agreement. Upon any termination, including termination by you, you must destroy the Software (including the related documentation), together with all copies or modifications in any form.
6. Special Terms Applicable to Databases. Where a database is included with the Software, you acknowledge that it is licensed only in connection with the use of the Software to perform disc creation, and that the database and all data derived therefrom must be maintained in confidence in accordance with the provisions of Section 4. This license does not grant you any rights to distribute or disclose such database or data.
7. Limited Warranty. Adaptec and its Licensor warrant only that the media upon which the Software is furnished will be free from defects in material or workmanship under normal use and service for a period of thirty (30) days from the date of delivery to you. ADAPTEC AND ITS LICENSORS DO NOT AND CANNOT WARRANT THE PERFORMANCE OR RESULTS YOU MAY OBTAIN BY USING THE SOFTWARE OR DOCUMENTATION. THE FOREGOING STATES THE SOLE AND EXCLUSIVE REMEDIES ADAPTEC AND ITS LICENSORS WILL PROVIDE FOR BREACH OF WARRANTY. EXCEPT FOR THE FOREGOING LIMITED WARRANTY, ADAPTEC AND ITS LICENSORS MAKE NO WARRANTIES, EXPRESSED OR IMPLIED, INCLUDING, BUT NOT LIMITED, AS TO

NON-INFRINGEMENT OF THIRD PARTY RIGHTS, MERCHANTABILITY OR FITNESS FOR A PARTICULAR PURPOSE. Some states do not allow the exclusion of implied warranties or limitations on how long an implied warranty may last, so the above limitations may not apply to you. This warranty gives you specific legal rights and you may also have other rights which vary from state to state.

8. The entire liability of Adaptec and its licensors, and your exclusive remedy for a breach of this warranty, shall be:
 - a. The replacement of any media not meeting the above limited warranty which is returned to Adaptec; or:
 - b. If Adaptec or its distributor is unable to deliver replacement media which is free from defects in materials or workmanship, you may terminate this Agreement by returning the Software and your money will be refunded.
9. Limitation of Liability. IN NO EVENT WILL ADAPTEC OR ITS LICENSORS BE LIABLE TO YOU FOR ANY INCIDENTAL, CONSEQUENTIAL OR INDIRECT DAMAGES, INCLUDING ANY LOST PROFITS, LOST SAVINGS, OR LOSS OF DATA, EVEN IF ADAPTEC OR A LICENSOR HAS BEEN ADVISED OF THE POSSIBILITY OF SUCH DAMAGES, OR FOR ANY CLAIM BY ANY OTHER PARTY. Some states do not allow the exclusion or limitation of special, incidental, or consequential damages, so the above limitation or exclusion may not apply to you.
10. Export. You acknowledge that the laws and regulations of the United States and other countries may restrict the export and re-export of the Software. You agree that you will not export or re-export the Software or documentation in any form in violation of applicable United States and foreign law.
11. Government Restricted Rights. The Software is subject to restricted rights as follows. If the Software is acquired under the terms of a GSA contract: use, reproduction or disclosure is subject to the restrictions set forth in the applicable ADP Schedule contract. If the Software is acquired under the terms of a DoD or civilian agency contract, use, duplication or disclosure by the Government is subject to the restrictions of this Agreement in accordance with 48 C.F.R. 12.212 of the Federal Acquisition Regulations and its successors and 49 C.F.R. 227.7202-1 of the DoD FAR Supplement and its successors.
12. General. You acknowledge that you have read this Agreement, understand it, and that by using the Software you agree to be bound by its terms and conditions. You further agree that it is the complete and exclusive statement of the agreement between Adaptec and you, and supersedes any proposal or prior agreement, oral or written, and any other communication between Adaptec and you relating to the subject matter of this Agreement. No additional or any different terms will be enforceable against Adaptec unless Adaptec gives its express consent, including an express waiver of the terms of this Agreement, in writing signed by an officer of Adaptec. You assume full responsibility for the use of the Software and agree to use the Software legally and responsibly. This Agreement shall be governed by California law, except as to copyright matters, which are covered by Federal law. This Agreement is deemed entered into at Milpitas, California by both parties. Should any provision of this Agreement be declared unenforceable in any jurisdiction, then such provision shall be deemed severable from this Agreement and shall not affect the remainder hereof. All rights in the Software not specifically granted in this Agreement are reserved by Adaptec.

Should you have any questions concerning this Agreement, you may contact Adaptec by writing to:

Adaptec, Inc.
Legal Department
691 South Milpitas Boulevard
Milpitas, California 95035

Regulatory Compliance Statements

Federal Communications Commission Radio Frequency Interference Statement

WARNING: Changes or modifications to this unit not expressly approved by the party responsible for compliance could void the user's authority to operate the equipment. This equipment has been tested and found to comply with the limits for a Class B digital device, pursuant to Part 15 of the FCC rules. These limits are designed to provide reasonable protection against harmful interference in a residential installation. This equipment generates, uses, and can radiate radio frequency energy, and if not installed and used in accordance with the instruction manual, may cause harmful interference to radio communications. However, there is no guarantee that interference will not occur in a particular installation. However, if this equipment does cause interference to radio or television equipment reception, which can be determined by turning the equipment off and on, the user is encouraged to try to correct the interference by one or more of the following measures:

- Reorient or relocate the receiving antenna.
- Increase the separation between equipment and receiver.
- Connect the equipment to an outlet on a circuit different from that to which the receiver is connected.
- Consult the dealer or an experienced radio/television technician for help.
- Use a shielded and properly grounded I/O cable and power cable to ensure compliance of this unit to the specified limits of the rules.

This device complies with part 15 of the FCC rules. Operation is subject to the following two conditions: (1) this device may not cause harmful interference and (2) this device must accept any interference received, including interference that may cause undesired operation.



European Union Compliance Statement

This Information Technology Equipment has been tested and found to comply with the following European directives:

EMC Directive 89/336/EEC, as amended by 92/31/EEC and 93/68/EEC

EN50081-1 (1992)

EN55022 (1994) Class B

EN50082-1 (1992)

EN61000-4-2 (1998)

EN61000-4-3 (1998)

EN61000-4-4 (1995)

EN61000-4-5 (1995) Surges

EN61000-4-6 (1996) Conducted immunity

EN61000-4-11 (1994) Supply dips of variation



Australian/New Zealand Compliance Statement

This device has been tested and found to comply with the limits for a Class B digital device, pursuant to the Australian/New Zealand standard AS/NZS 3548 set out by the Spectrum Management Agency.



Canadian Compliance Statement

This Class B digital apparatus meets all requirements of the Canadian Interference-Causing Equipment Regulations.

Cet appareil numérique de la classe B respecte toutes les exigences du Règlement sur le matériel brouilleur du Canada.



Japanese Compliance (Voluntary Control Council Initiative)

This equipment complies to class B Information Technology equipment based on VCCI (Voluntary Control Council for Interface). This equipment is designed for home use but it may causes radio frequency interference problem if used too near to a television or radio. Please handle it correctly per this documentation.

This *User's Guide* describes how to install the Adaptec AUA-1420 USB2connect for Notebooks adapter and its associated drivers in a notebook computer. This *Guide* also describes how to connect various devices.

Overview

The USB2connect for Notebooks adapter lets you to connect Universal Serial Bus (USB) devices to Windows® and Macintosh® notebook computers.

The USB2connect for Notebooks adapter is compatible with USB 1.1 Open Host Controller Interface (OHCI) and USB 2.0 Enhance Host Controller Interface (EHCI) devices and works in any CardBus slot.

USB 2.0 is the fastest USB standard, capable of transferring data at up to 480 Megabits per second while maintaining backward compatibility with USB 1.1 devices.

The USB2connect for Notebooks adapter provides two USB ports and the option of an external power supply to support devices that do not have their own power supplies.

Taking Inventory

Your USB2connect for Notebooks adapter kit includes the items shown below.

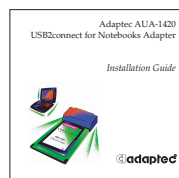
USB2connect for
Notebooks adapter



USB2connect for
Notebooks CD



Installation guide,
and other literature



What's on the CD

- Readme file
- This *User's Guide*
- Adobe Acrobat software
- Windows drivers
- Product registration information

System Requirements

Your notebook computer must meet the requirements outlined below for use with the USB2connect for Notebooks adapter.

Windows Notebook

- 266-MHz (or faster) processor
- Available CardBus (PCMCIA Type II) slot
- Windows XP, Windows 2000, Windows Me, or Windows 98 SE
- CD-ROM drive

Macintosh Notebooks

- PowerBook G3 Series or later
- Available CardBus (PCMCIA Type II) slot
- Mac OS 9.2.1 or later and Mac OS X 10.1 or later
- CD-ROM drive

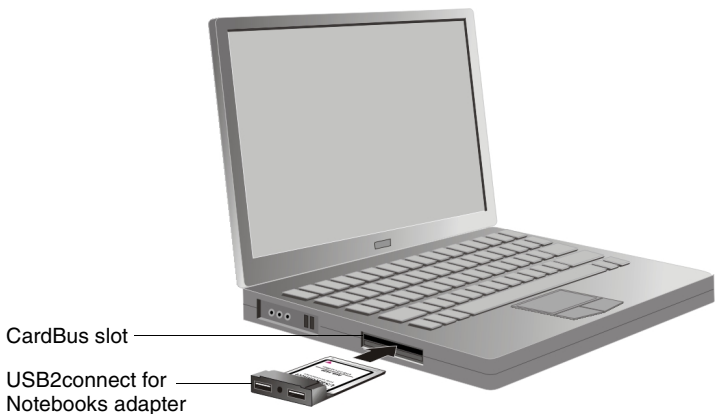
Installing the Windows Drivers

The USB2connect for Notebooks adapter contains the following controllers:

Controller	Description
USB 1.1	NEC PCI to USB Open Host Controller
USB 2.0	Adaptec AUA-1420 CardBus to USB Enhanced Host Controller

When successfully installed, these controllers are displayed separately in the Windows Device Manager.

- 1 Turn on the computer and insert the USB2connect for Notebooks adapter in the CardBus slot.



- 2 Insert the USB2connect for Notebooks CD.

Proceed with instructions appropriate to your operating system:

- [Windows XP on page 4.](#)
- [Windows 2000 on page 8.](#)
- [Windows Me on page 11.](#)
- [Windows 98 SE on page 13.](#)

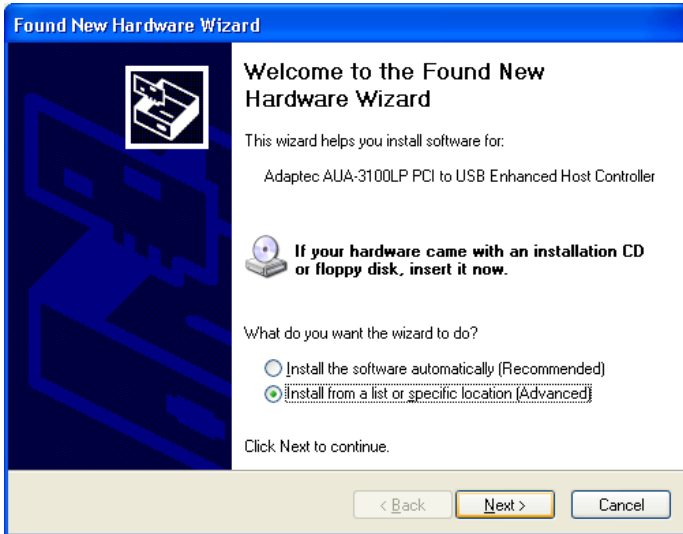
Windows XP

Continue here after performing steps on [page 3](#).

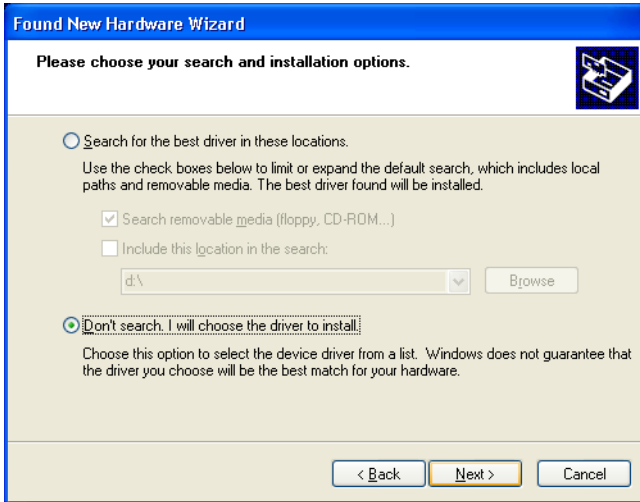
1 Start Windows XP.

Windows XP will automatically discover the new hardware and start the Found New Hardware Wizard to walk you through the device driver installation.

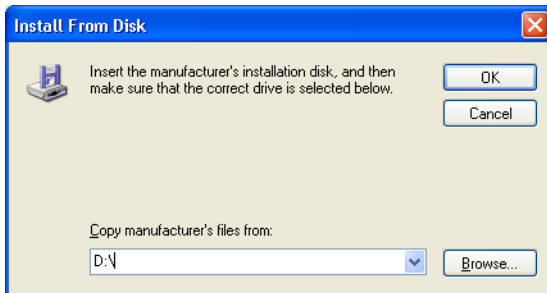
2 Select **Install from a list or specific location (Advanced)**, then select **Next**.



- 3 Select **Don't search, I will choose the driver to install**, then click **Next**.



- 4 Click **Next** again.
- 5 Click **Have Disk**.
- 6 Insert the Adaptec USB2connect CD into the CD-ROM drive. Type the drive letter for your CD-ROM drive in the Copy manufacturer's files from box, as shown below, and click **OK**.

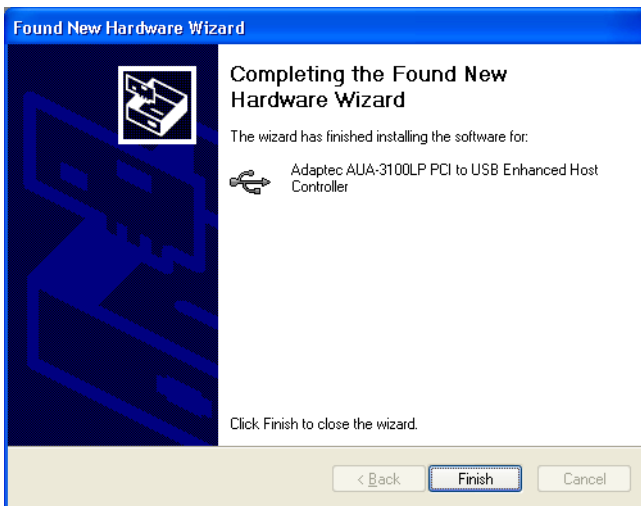


Note: Your CD-ROM drive may have a different drive letter than the one shown in the example above.

- 7 On the next screen, click **Continue Anyway**.

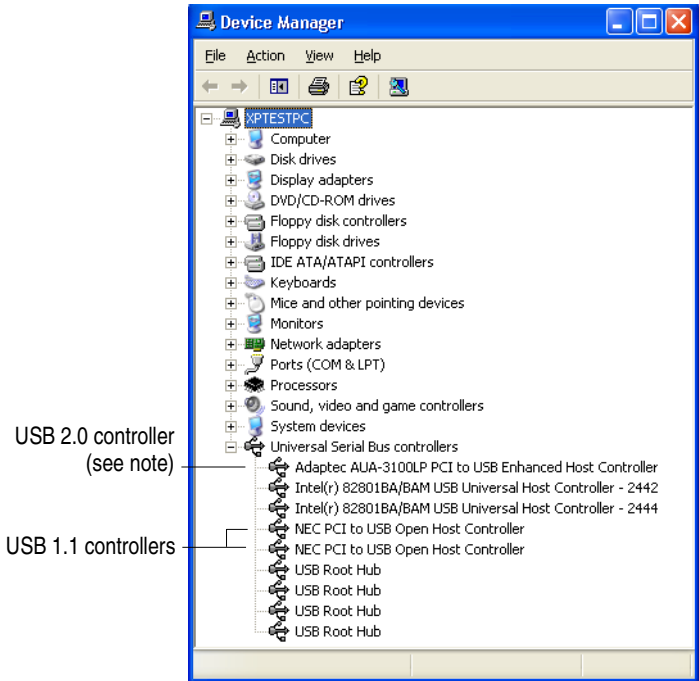


- 8 When the installation is complete, click **Finish**.



- 9 If you are prompted to restart the computer, click **Yes**.

- 10 To verify that the driver is installed, right-click the **My Computer** desktop icon, select **Properties**, click the **Hardware** tab, then click the **Device Manager** button. Expand **Universal Serial Bus controllers** and verify that the information shown below appears.

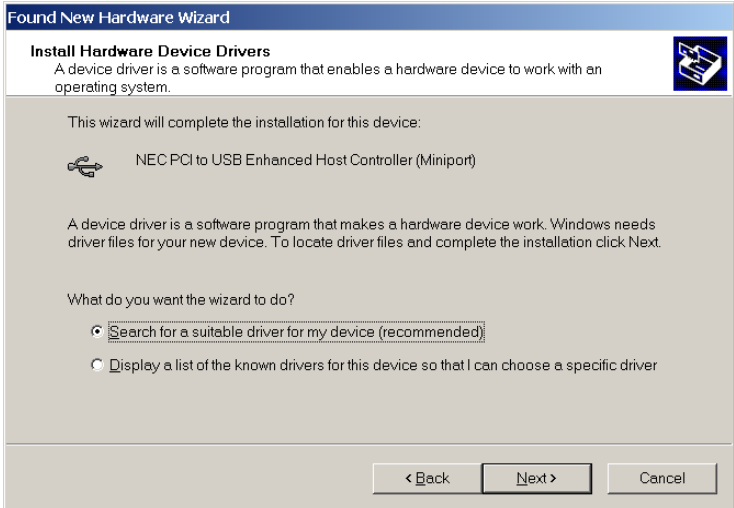


Note: *USB 2.0 controller* – Your controller is identified by its model number, which may differ from the model number shown in this *User's Guide*.

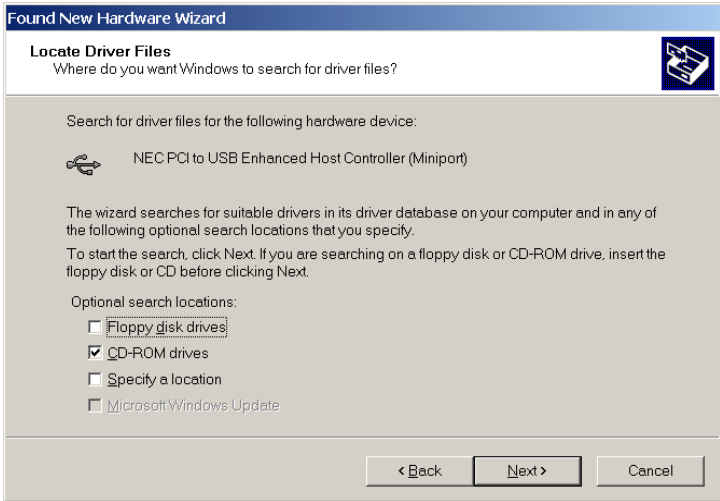
Windows 2000

Continue here after performing steps on [page 3](#).

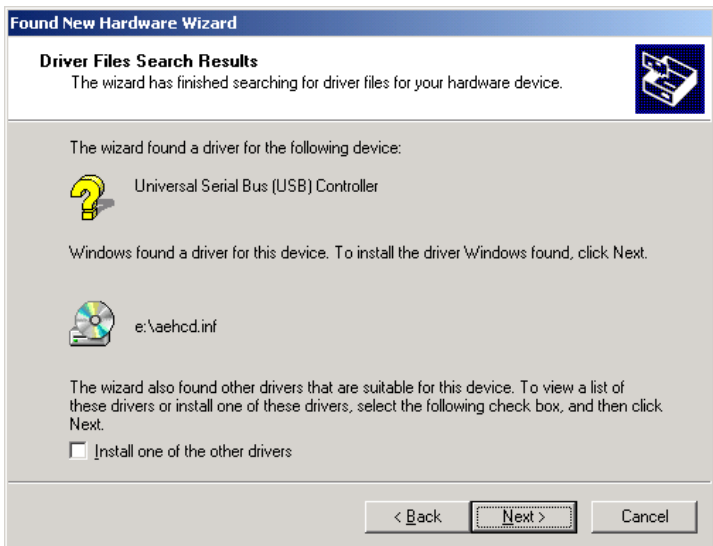
- 1 When the Found New Hardware Wizard opens, click **Next**.
- 2 In the Install Hardware Device Drivers window, select **Search for a suitable driver for my device (recommended)** and click **Next**.



- 3 In the Locate Driver Files window, uncheck all options *except* CD-ROM drives, and click **Next**.

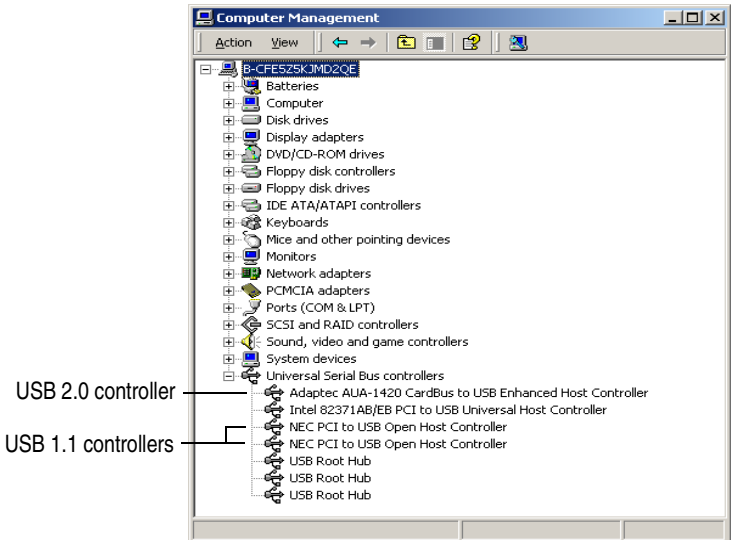


- 4 In the Driver Files Search Results window, ensure that **Install one of the other drivers** is *not* checked and click **Next**.



- 5 When Windows is finished copying drivers, click **Finish**.
- 6 Restart your computer if prompted to do so.

- 7 To verify that the driver is installed, right-click the **My Computer** desktop icon, select **Properties**, click the **Hardware** tab, click the **Device Manager** button, and then, expand **Universal Serial Bus controllers** and verify that the information shown below appears.



Notes:

- 1 The Windows 2000 Device Manager may show a green question mark next to the Adaptec USB controller. This is normal and does not affect the operation of the USB2connect for Notebooks adapter.
- 2 For instructions on removing the USB2connect for Notebooks adapter from a Windows 2000 notebook, see [page 19](#).

Windows Me

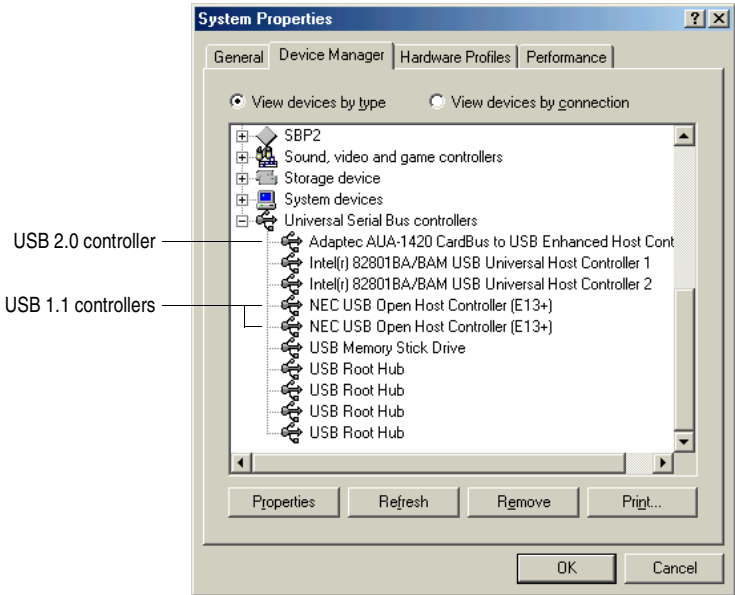
Continue here after performing steps outlined on [page 3](#).

- 1 When the Add New Hardware Wizard opens, click **Next**.
- 2 Select **Automatic search for a better driver (Recommended)**. Then, insert the USB2connect for Notebooks CD and click **Next**.



- 3 When Windows has finished copying the USB 2.0 drivers from the USB2connect for Notebooks CD, click **Finish**.
- 4 Restart your computer if prompted to do so.

- 5 To verify that the driver is installed, right-click the **My Computer** desktop icon, select **Properties**, click the **Device Manager** tab, and then expand **Universal Serial Bus controllers** and verify that the information shown below appears.



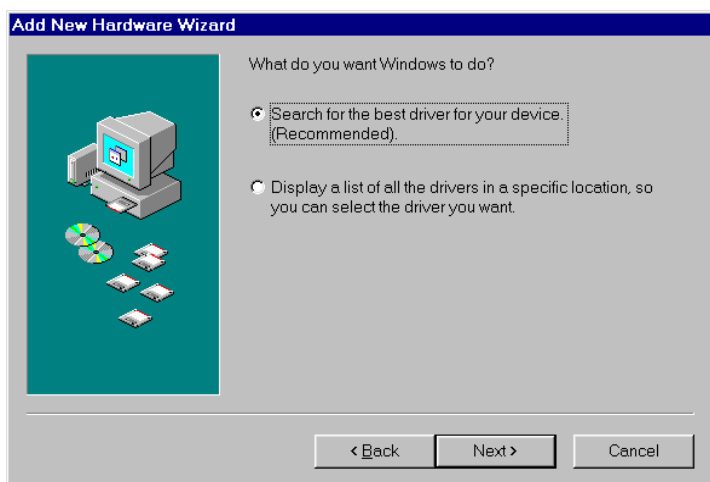
Note: The Windows Me Device Manager may show a green question mark next to the Adaptec USB controller. This is normal and does not affect the operation of the USB2connect for Notebooks adapter.

Windows 98 SE

Windows 98 SE requires two device driver installations using the Add New Hardware Wizard because the operating system has no embedded USB drivers. During driver installation, you may need to use the Windows 98 SE CD.

Continue here after performing steps on [page 3](#).

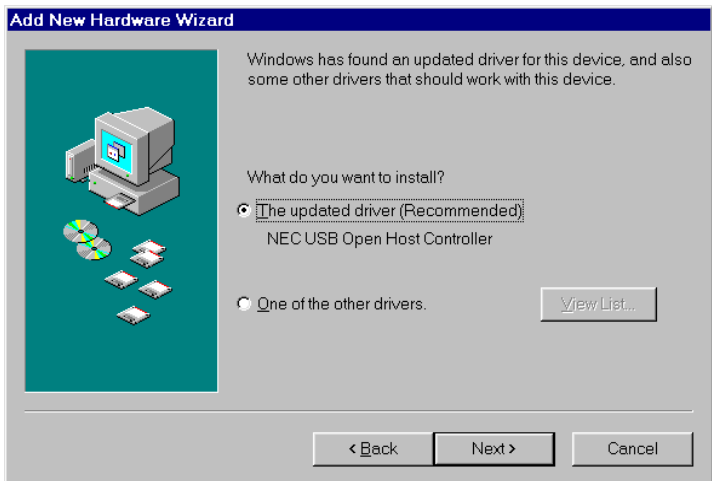
- 1 When the Found New Hardware Wizard opens, click **Next**. The Add New Hardware Wizard opens.
- 2 Click **Next**.
- 3 Select **Search for the best driver for your device (Recommended)** and click **Next**.



- 4 In the following window, uncheck all options and click **Next**.

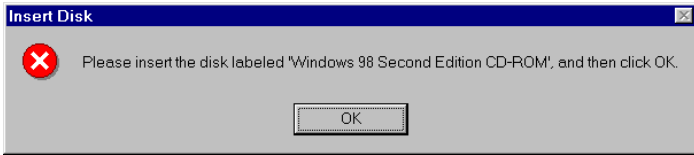


- 5 Select **The updated driver (Recommended)** and click **Next**.

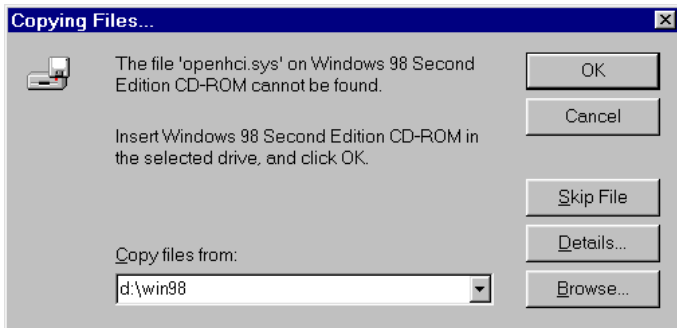


- 6 You may see a message that Windows is searching for the driver. Click **Next**.

- 7 You may see the following screen prompting you to insert your Windows 98 CD in the CD-ROM drive. If so, follow the instructions and click **OK**.



- 8 If prompted to do so, type the drive letter for your CD-ROM drive in the Copy files from box, as shown below, and click **OK**.

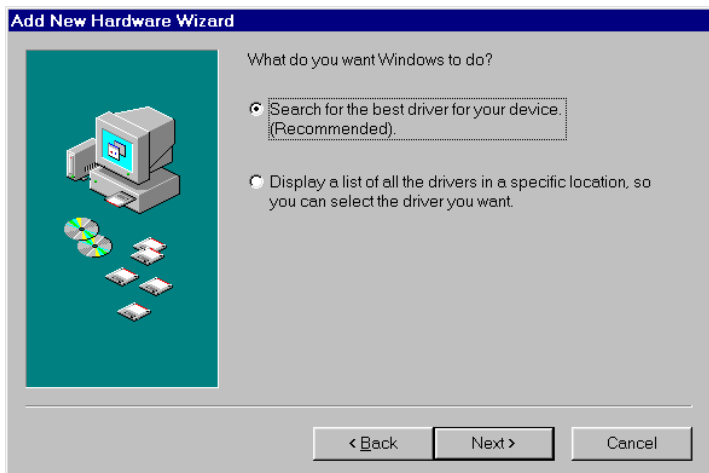


Note: If you have copied your driver files onto your hard drive and know where they are located, you can browse to that folder instead of inserting the Windows 98 SE CD. Also, your CD-ROM drive letter may be different from the one shown in the above example.

- 9 When the USB 1.1 driver has been copied onto your system, the following window appears. Click **Finish**.



- 10 The Hardware Wizard restarts and attempts to install the USB 2.0 driver. Click **Next**.
- 11 Select **Search for the best driver for your device (Recommended)**, and click **Next**.



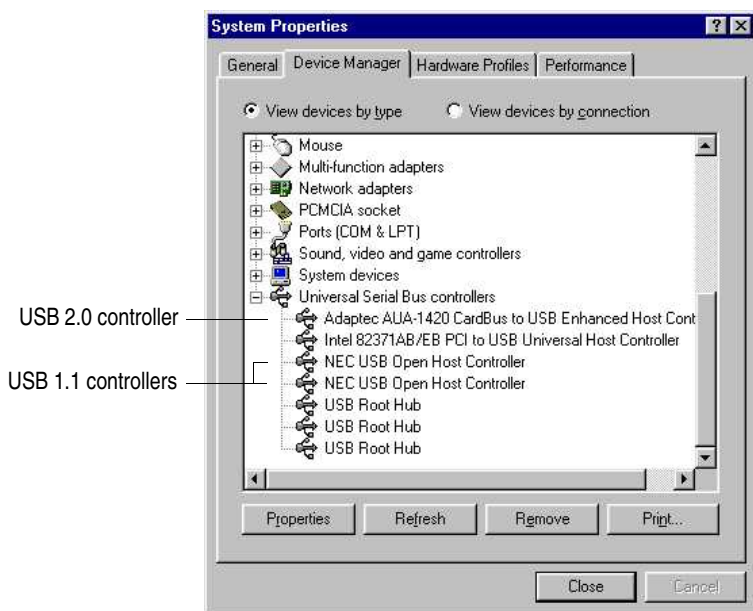
- 12 Check the **CD-ROM drive** option, insert the USB2connect for Notebooks CD, and click **Next**.



- 13 You may see a screen recommending to you the option of selecting an updated driver. If you see this option, click **Next**.
- 14 If Windows shows you the location of the driver, click **Next**.
- 15 Windows might display an Unknown Device error message if there is no USB 2.0 driver on your system. When you see the screen below, click **Finish**.



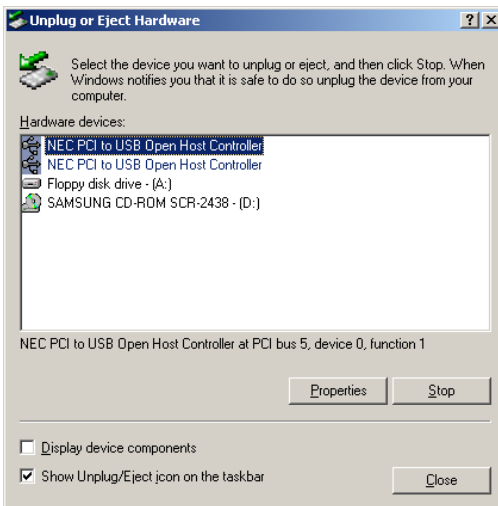
- 16 To verify that the drivers are installed, right-click on the **My Computer** desktop icon, select **Properties**, click the **Device Manager** tab, and then expand **Universal Serial Bus controllers**. Verify that the information shown below appears.



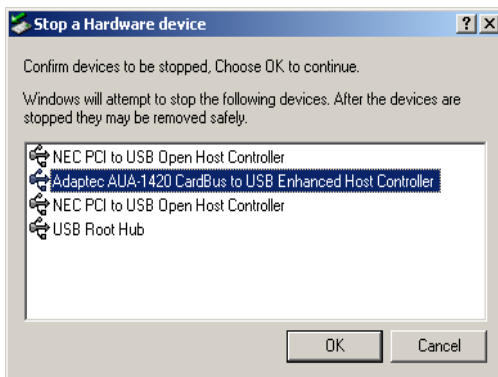
Removing the USB2connect for Notebooks Adapter – Windows 2000 only

Windows 2000 requires a special operation to properly remove hardware such as the USB2connect for Notebooks adapter.

- 1 Open the Unplug or Eject Hardware wizard by clicking the icon shown at right, which is at the bottom right corner of your desktop.
- 2 The unplug or Eject Hardware wizard is displayed. Click **NEC PCI to USB Open Host Controller** and then click **Stop**.



- 3 Then, click **OK** in the window below.



Installing the Macintosh Driver

- 1 Turn on the computer and insert the USB2connect for Notebooks CD.
- 2 Double-click the **Start Installation Here** installer file on the CD.
- 3 Read the directions carefully and follow all installation instructions.
- 4 After the installation is complete, restart the PowerBook.
- 5 Once the system has restarted, insert the USB2connect for Notebooks adapter in the CardBus slot of your PowerBook.

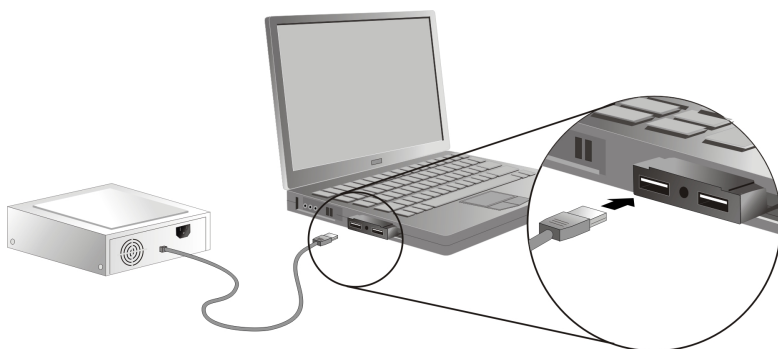


- 6 If the driver installation was successful and the USB2connect for Notebooks is fully inserted, you will see one of the USB2connect for Notebooks adapter icons shown at right on your desktop. If not, see [Troubleshooting on page 23](#).



Connecting USB Devices

You can connect standard USB 1.1 or high-speed USB 2.0 devices to the connectors of the USB2connect adapter, as shown below.



Note: To ensure proper functioning, use a standard USB cable with a maximum length of 6 feet (2 meters).

External Power Source

In most cases, you can attach USB devices without using an external power adapter. However, when attaching multiple devices with varying power requirements, an external power source may be needed to ensure proper functioning.

If necessary, use a UL-approved power supply with a polarity configuration as shown at right, a P-7 power connector (3.5-mm outside and 1.3-mm inside diameter), and a 5-V, 1.5-A DC output. Refer to your device documentation for the device power requirements.



Hotplugging USB Devices

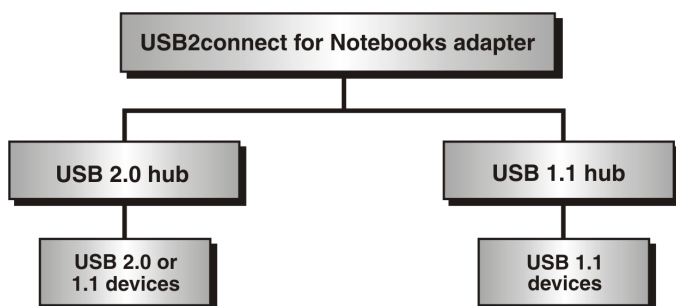
The USB2connect for Notebooks adapter supports hotplugging, allowing USB devices to be attached and recognized while the computer is on. Device manufacturers support hotplugging in different ways. Refer to the instructions for each device for attaching and mounting recommendations.



Note: Moving a device from one adapter connector to another can cause the operating system to initiate a new hardware installation process. Refer to the Readme file for details.

Hubs

The following figure shows the recommended configuration for connecting USB 1.1 and USB 2.0 devices. Note that you *could* connect USB 2.0 devices to a USB 1.1 hub, but the USB 2.0 devices would run at USB 1.1 speeds.



Troubleshooting

If you encounter difficulties installing or using your USB2connect for Notebooks adapter, check the following:

- Is the adapter inserted completely in the CardBus slot?
- Is the cable properly connected to the USB2connect for Notebooks adapter and the device?
- Is your device powered on?
- Does the device require an external power source? See [External Power Source on page 21](#) for details.
- Are you encountering problems hotplugging the USB2connect adapter? If so, an external power source may be required to run your USB devices. See [External Power Source on page 21](#) and the Readme file on the USB2connect for Notebooks CD.
- Did you encounter problems with a USB device when it is connected to a hub? If so, connect the affected device directly to the USB2connect for Notebooks adapter.
- Did you encounter problems loading the drivers on your Windows 2000 operating system? If so, refer to the Readme file on the USB2connect for Notebooks CD. Also, check the Windows 2000 event log and the troubleshooting section of your operating system user's guide.
- Are you having problems using your notebook computer after you disconnect a device? If so, restart the computer, and see if the problem recurs.
- *Macintosh only* – Do you see either of the USB2connect for Notebooks adapter icons shown at right on your desktop? If not, this means the driver is disabled or not installed. See [Installing the Macintosh Driver on page 20](#). If you have further difficulties, check the Readme file on the USB2connect for Notebooks CD and <http://www.adaptec.com>.



USB



USB

For more troubleshooting information, visit <http://www.adaptec.com> and <http://ask.adaptec.com>.



Adaptec, Inc.
691 South Milpitas Boulevard
Milpitas, CA 95035 USA

© 2001-2002 Adaptec, Inc.
All rights reserved. Adaptec and the Adaptec logo
are trademarks of Adaptec, Inc. which may be
registered in some jurisdictions.

Part Number: 513015-06, Ver. AB LB 03/02