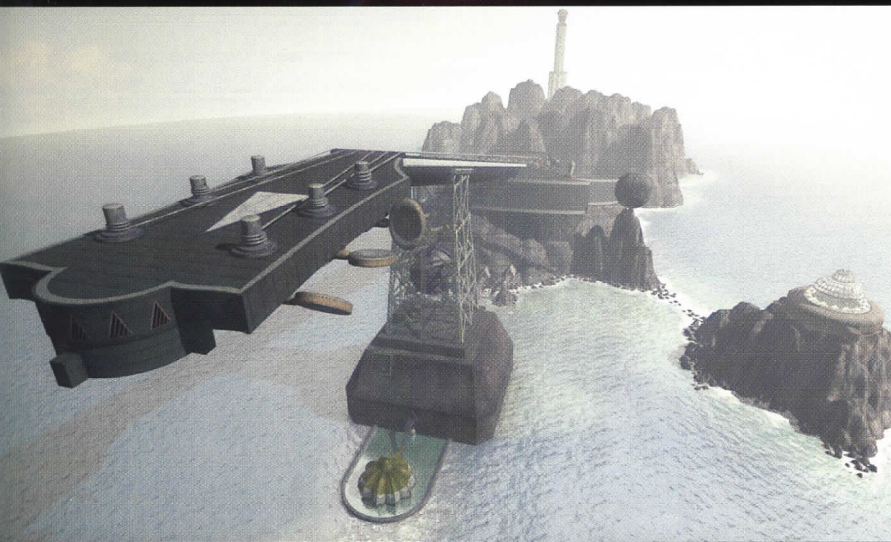


# ALIDA™



THE ENIGMATIC GIANT

# GETTING STARTED

## INSTALLATION

To install Alida on your Macintosh® computer:

1. Insert the 'Alida 2' compact disk into your CD-ROM drive.
2. Drag the folder named 'Alida Game' to your hard drive.

For the best performance (before starting Alida):

- Quit other applications
- Turn off File Sharing

To play Alida:

1. Set your computer monitor to display millions of colours
2. Set your computer monitor to display 800 x 600 or 640 x 480 resolution (these settings are preferable)
3. Open the 'Alida Game' folder that was copied to your hard drive.
4. Double click on the 'Alida' icon to launch the game.
5. Press the 'New Game' button.

The first screen that will appear is the 'Set Up Assistant' window. Please take some time to adjust your computer monitor and sound system as instructed for optimal game play. If you have a reasonable sound system available, use it! Connect the stereo sound output of your Macintosh computer to your sound system. As you play, Alida may ask you to insert or swap CD-Roms. There will be pauses while the CD-Rom mounts. If you need support or a little hint, visit our web site at [www.alidagame.com](http://www.alidagame.com)

# M E N U S

Checkmarks indicate 'on' or 'current' settings

## Alida

Quit Alida ⌘Q

QUIT ALIDA - quits Alida

## File

New Game ⌘N

NEW GAME - starts a new Alida game from the beginning

Open Game ⌘O

OPEN GAME - restores a previously saved game

Save Game ⌘S

SAVE GAME - saves your current game

## Sounds

Off ⌘0

SOUND VOLUME - all audio can be turned off with the 'OFF' setting

Δ ⌘1

1 - softest volume setting

ΔΔ ⌘2

ΔΔΔ ⌘3

ΔΔΔΔ ⌘4

ΔΔΔΔΔ ⌘5

ΔΔΔΔΔΔ ⌘6

✓ ΔΔΔΔΔΔΔ ⌘7

7 - loudest volume setting

✓ Ambience

AMBIENCE - the Alida environment sounds can be turned off/on

✓ Music

MUSIC - the Alida music score can be turned off/on

## Transitions

None

NONE / FAST / NORMAL - movement speed between scenes

Fast

NONE has no transitions, FAST has quick transitions, NORMAL has the smoothest transitions.

✓ Normal

✓ Rocket Mode

ROCKET MODE - enables quick movement between locations

✓ Water Motion

WATER MOTION - water animations can be turned off/on

## Set up

Set Up Assistant

SET UP ASSISTANT - use this to adjust your monitor and sound system settings optimal for Alida

# NAVIGATION

## Cursors used in Alida



POINTER - move forward / object manipulation



LEFT - look left



RIGHT - look right



UP - look up



DOWN - look down



BACK LEFT - look directly behind



BACK RIGHT - look directly behind



GRABBER - object manipulation / pick up. When an item has been picked up, the cursor will change briefly to show that you are carrying it.



MAGNIFYING GLASS - step forward for a closer look. Many objects can be examined closer by clicking on them.



MAGNIFYING GLASS - step back



ROCKET - jumps to a distant location. Areas that you've already explored can be traversed quickly when the rocket cursor appears



# A B O U T A L I D A

Alida begins with a woman pleading with you to find her husband and return him home. Her name is Julia and her husband Arin left for Alida two weeks previous and has not returned.

Alida is an interactive adventure game that you navigate through using your mouse. Depending where the cursor is on the screen, the cursor will change giving you different options. A full list of these cursors is on page 4. There are many objects in Alida that can be manipulated - if it looks like it can be pushed, pulled, turned etc. then try it! When you explore Alida many puzzles will confront you. Clues to these puzzles could be anywhere so think about where you have been and what you have seen and heard. Many puzzles cannot be solved immediately so if you're not having any luck, leave it and go elsewhere - you will get the answers you need by exploring.

After playing Alida for awhile you may want to move around areas you have already explored quickly. Enable Rocket Mode by selecting it in the 'Transitions' menu. Be aware that Alida won't display Rockets if you are in an area you haven't explored. Rocket Mode is great for getting around areas quickly, but keep in mind that you may skip through areas that give vital clues.

If you are at a location that you want to return to, use 'Save Game' to save the current game (saves everything you have done) to your hard drive. Name your file so it describes the situation. You can then go back at any time by selecting 'Open Game'.

All the audio and visual elements of Alida are designed to enhance your game experience, but if you want to move around as fast as possible:

- Turn on 'Rocket Mode'
- Set transitions to 'None'
- Turn off 'Water Motion'
- Skip long animations (before they start) by holding down the option key.

Alida will run fastest if all 5 Alida CD-Roms are copied to your hard drive. Insert each CD-Rom, option-dragging the CD-Rom icon into the 'Alida Game' folder on your hard drive.

So, turn the sound up and the lights down, imagine you're there in Alida and enjoy!

Macintosh system minimum requirements: G4 350 / QuickTime 5 / Mac OS 10.1.2 /  
21 Meg RAM free / approx 185 Meg hard disk space / 640 x 480 screen 'thousands' colours.

For technical support, please visit the 'SUPPORT' page on our web site at [www.alidagame.com](http://www.alidagame.com)  
If the solution you require is not there, you can get support by email at [support@alidagame.com](mailto:support@alidagame.com)  
If you do not have access to the internet, call or mail us:

Dejavu Worlds  
41 Bundaroo Street  
Bowral NSW 2576  
Australia  
Tel: (612) 4862 1142

**COPYRIGHT:** The enclosed computer software product is copyrighted and all rights are reserved by Dejavu Worlds. You may use one copy of this product on a single computer, and may not install this product on more than one computer terminal at the same time. You are entitled to use this product for your own personal use, but you may not copy, duplicate, distribute, rent, lease or transfer the software or accompanying materials to other parties without prior written permission of Dejavu Worlds.

**LIMITED WARRANTY:** 90 days - Dejavu Worlds warrants to the original purchaser of this computer software product that the disks containing the software will be free from defects in material and workmanship for 90 days from the date of purchase. This Limited Warranty is void if the disk malfunction is the result of damage to the disk after purchase. This Limited Warranty is not applicable to normal wear and tear. Any implied warranties applicable to this product are limited to the 90 days from the date of purchase. Dejavu Worlds entire liability and your remedy shall be the replacement of the defective disk(s) returned to Dejavu Worlds with a copy of the purchase receipt.

**NO ADDITIONAL WARRANTIES OR LIABILITIES:** Except as stated above, Dejavu Worlds makes no warranty, oral or written, express or implied, regarding this product. Dejavu Worlds disclaims any warranty that the software or the accompanying material is fit for a particular purpose. Dejavu Worlds shall not be liable for special, consequential or other damages, even if Dejavu Worlds is advised of or aware of the possibility of such damages. Dejavu Worlds shall not be responsible or liable for lost profits or revenues, or for damages or costs incurred as a result of loss of time, data or use of the software, or from any other cause except the actual cost of the product. In no event shall Dejavu Worlds liability exceed the purchase price of the product.

## **ALIDA TROUBLESHOOTING**

Alida should perform trouble free providing it is running on the recommended Macintosh®. If you are having problems, you may find a solution using the list below. If you can't find a solution here, try our SUPPORT page on our web site at [www.alidagame.com](http://www.alidagame.com) or write or email us using the addresses below and we'll get back to you ASAP. To get the best solution to you as quickly as we can, we will need a clear description of your problem or question regarding Alida. Please provide us with at least two reliable ways to contact you: an email address and postal address.

Mail: DEJAVU WORLDS  
41 Bundaroo Street Bowral NSW 2576  
Australia

Email: [support@alidagame.com](mailto:support@alidagame.com)

**NOTE: This version of Alida is designed for Macintosh OS 10.1.2 or greater.**

### **1 Alida tells you it needs a certain system or extension**

Alida requires Macintosh OS X (10.1.2 or greater) / QuickTime 5 or greater  
Quicktime can be downloaded from Apple Computer's website: [www.apple.com](http://www.apple.com)

### **2 The images look grainy and / or coarse**

Set your monitor color to millions (24bit). If you don't have this option then set to thousands (16bit).  
Do this by opening System Preferences, clicking 'Displays' and then selecting millions of colors.

### **3 The images are small**

Set your monitor resolution to 640 x 480. If you don't have this option then set to 800 x 600.  
Do this by opening System Preferences and clicking 'Displays' and then selecting 640 x 480 resolution.

### **4 No sound / partial sound**

Check the volume setting in the 'Sounds' menu of Alida to make sure that it is not set to 'Off'.  
Check that your speakers are correctly plugged in and turned on.

### **5 Some animations are blurry or misaligned or erratic**

If you are running Alida on any Mac G4 (or faster), you have a choice between 2 animation codecs.  
You can tell Alida to use alternative animations by pressing option a (at any time).

## 6 You want to move around Alida faster

All the audio and visual elements of Alida are designed to enhance your game experience, but if you want to move around as fast as possible:

- Turn on 'Rocket Mode'
- Set transitions to 'None'
- Turn off 'Water Motion'
- Skip long animations (before they start) by holding down the option key.

Alida will run fastest if all 5 Alida CD-Roms are copied to your hard drive\*.

## 7 Alida's performance is slow or erratic

For the best performance (before starting Alida):

- Quit other applications
- Quit the Classic environment
- Turn off File Sharing

## 8 Alida is crashing or freezing

Don't have other applications running at the same time as Alida as conflicts may occur.

## 9 'M' folder error

If you are getting this error message:

**'The 'M' folder MUST be in the same location as the 'Alida' application.**

**Place them BOTH in the same folder then restart 'Alida'...**

Keep the 'Alida' application AND the folder labelled 'M' both together in the same folder on your hard drive otherwise Alida will not work. You may have inadvertently moved them apart.

\*You will need 3380 MB of hard disk space: Insert each CD-Rom, option-dragging the CD-Rom icon into the 'Alida Game' folder on your hard drive. When you have done this, you should have 6 folders ('Alida 1', 'Alida 2', 'Alida 3', 'Alida 4', 'Alida 5' and 'M') and Alida all in the 'Alida Game' folder. This can be done at any time - the next time Alida is started after this procedure, it will detect the files on your hard drive.