



# Using Games with Virtual PC

Virtual PC contains a number of enhancements for playing PC games on your Mac, including DirectX game enhancement, and the ability to use 3Dfx graphics accelerator cards and joysticks.

*NOTE: All the Virtual PC drive images with Windows 95 and 98 contain the original 3Dfx Voodoo Graphics drivers pre-installed. If you have a Voodoo2 card, you must install the drivers; see instructions below.*

## DirectX game enhancements

Microsoft's DirectX technology is used in many popular Windows games. Virtual PC includes a custom video driver to improve performance in DirectX games. A fast PowerPC processor is required for DirectX games (G3 recommended.)

## 3Dfx graphics accelerator cards

Virtual PC directly accesses 3D graphics accelerator cards that are based on the 3Dfx Voodoo Graphics or Voodoo2 chip set, such as TechWorks' Power 3D card or Voodoo2 Game Wizard from Micro Conversions. The card must handle 3D graphics only; it cannot be a combined 2D/3D hardware card.

You must have a Power PC-based Mac with PCI slots to use these cards.

*NOTE: If you install Windows 95 on a new drive image, you need to install the 3Dfx Voodoo Graphics or Voodoo2 drivers from the Extras drive image located on the Virtual PC CD-ROM.*

*If you install Windows 98 on a new drive image, you need to install the Voodoo2 drivers from the Extras drive image located on the Virtual PC CD-ROM. If you install the Voodoo Graphics card, you do not need to install the drivers separately; Windows 98 detects the hardware and installs the correct drivers from the Windows 98 CD-ROM.*

## Installing Voodoo2 drivers for Windows

If you are using a Voodoo2 card (the second generation), you must install the drivers.

*NOTE: there are two versions of Voodoo cards currently in general use, Voodoo Graphics and Voodoo2. You cannot use both a Voodoo Graphics and a Voodoo2 card at the same time. If you install a Voodoo2 card, you must remove the original Voodoo Graphics card.*

To install the Voodoo2 drivers, first install the card, then do the following:

1. Launch Virtual PC while holding down the **Option** key (this brings up the **Preferences** dialog box).
2. In the Preferences, select **Extras 95** or **Extras 98** as the D drive.
3. Press the **Restart** button in the VPC Preferences.

Windows automatically detects the new hardware (PCI Multimedia Device). A dialog box appears, asking **What do you want Windows to do?**

4. Click the radio button **Search for the best driver for your device (Recommended)** and click **Next**.

The dialog box prompts that **Windows search for new drivers in its driver database**.

5. Check the **Specify a location** check box.
6. Change the drive location by typing the following in the box:

D:\Voodoo2

7. Click the **Browse** button.

The dialog box shows that the correct.inf file (**Voodoo2.inf**) has been found.

8. Click **Next** to continue.
9. The Version Conflict dialog box prompts you that a file is being copied that is older than the file currently on your computer, and asks, **Do you want to keep this file?**
10. Click **Yes**. This keeps the latest version, rather than install an older version.
11. You are prompted to restart your computer to finish installation.

## Voodoo Graphics drivers installation

If you install Windows 98 on a new drive image, Windows will install the correct drivers if the card is installed prior to installing Windows 98.

If you install Windows 95 on a new drive image and have a Voodoo Graphics card, you must install the necessary Voodoo Graphics drivers before using the card.

*NOTE: This installation is not necessary if you use the Virtual PC drive images with Windows pre-installed.*

*NOTE: You will need 40MB of free disk space on your C: drive image to complete the installation of the 3Dfx card software.*

1. Launch Virtual PC holding down the **Option** key (this brings up the VPC Preferences dialog box).
2. In the **Preferences**, select **Extras95** as the D: drive.
1. If you have a 3Dfx card, **Open My Computer** in Windows z; double-click on the **Extras95(D:)** drive.
2. Double-click to open the **DX5** folder.
3. Double-click on the **DX5ENG** file (this is an executable file). This launches the DirectX 5.0 installer.
4. Accept the licensing agreement, and continue the installation process.

The necessary files are extracted.

5. The install wizard prompts you that it is installing the new video driver; click **Yes**.

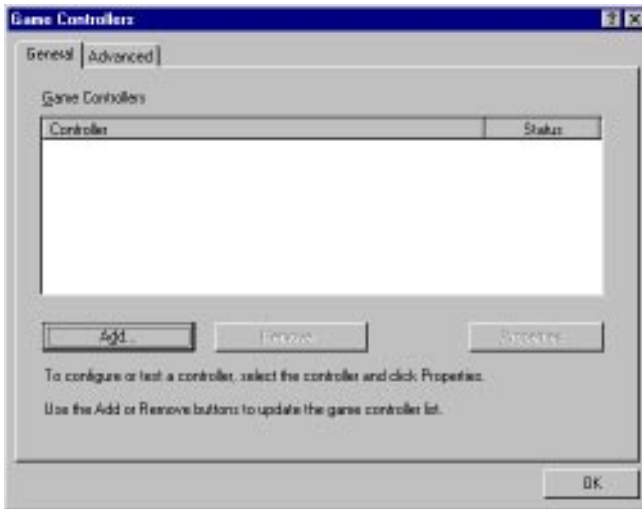
If your Mac has a 3Dfx video card, Windows displays a message that it has found a **PCI Multimedia Video Device**, and prompts you to install the drivers for the card.

6. Click **Next**.
7. Click the **Other Locations...** button, then click **Browse...**
8. Navigate to and highlight the **Voodoo** folder on the **Extras95 D:** drive and click **OK**.
9. Click **OK**, then click **Finish**.
10. A dialog box prompts you for the file **3dfxps.dll**; click **Browse**.
11. From the **Drives** pop-up menu, select the **D: Extras 95** drive and double-click on the **Voodoo;** folder.
12. Highlight the file **3dfxps.dll** and click **OK**.
13. Click **OK**, the click **OK** again and the file is installed.
14. Click **Yes** to restart Windows 95.

## Adding joysticks

You can use a joystick with Virtual PC by installing the Virtual PC joystick controller software within Windows. Do the following:

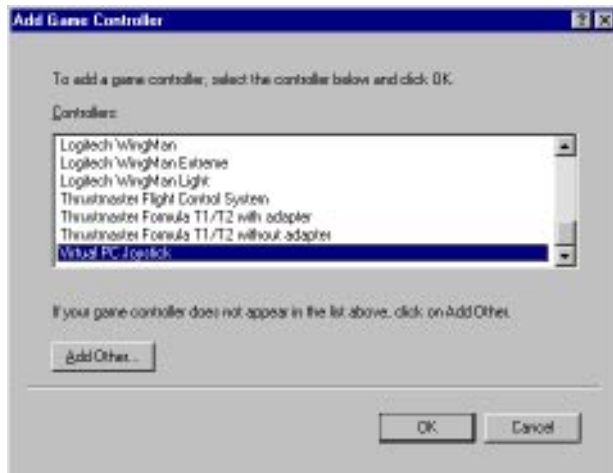
1. From the Start menu, select **Settings**.
2. Select the **Control Panel** and click.
3. Select **Games Controllers** and click.
4. The **Games Controllers** dialog box appears.



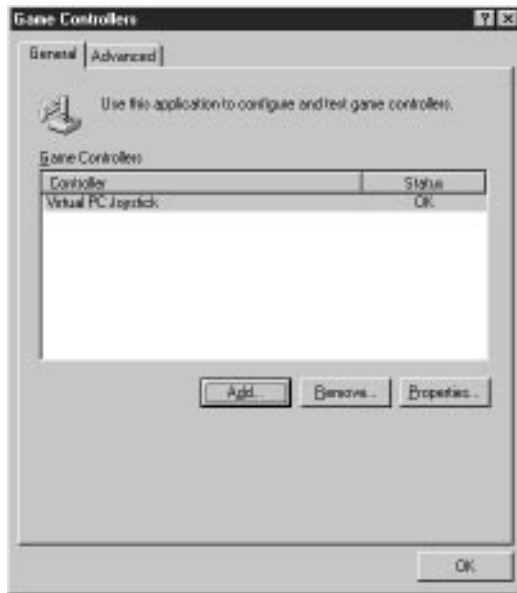
5. Click the Add button.

The Add Games Controller dialog box appears with a list of joysticks drivers;

6. Scroll down to the Virtual PC Joystick selection, and select it.
7. Click OK.



This opens the Games Controller dialog box, where you can calibrate the joystick.



- 8.** Click **Properties**.
- 9.** Click the **Calibrate** button.
- 10.** Follow the instructions on the screen.
- 11.** Click the **Finish** button.

