



USER'S GUIDE



ADAPTEC AFW-1430
FIRECONNECT FOR NOTEBOOKS ADAPTER

Copyright

©2001 Adaptec, Inc. All rights reserved. No part of this publication may be reproduced, stored in a retrieval system, or transmitted in any form or by any means, electronic, mechanical, photocopying, recording or otherwise, without the prior written consent of Adaptec, Inc., 691 South Milpitas Blvd., Milpitas, CA 95035.

Trademarks

Adaptec, the Adaptec logo, FireConnect, and AFW are trademarks of Adaptec, Inc., which may be registered in some jurisdictions.

Windows, Windows 2000, and Windows Me, and Windows 98, are trademarks of Microsoft Corporation in the U.S. and other countries, used under license.

Macintosh is a registered trademarks of Apple Computer, used under license.

All other trademarks are the property of their respective owners.

Changes

The material in this document is for information only and is subject to change without notice. While reasonable efforts have been made in the preparation of this document to assure its accuracy, Adaptec, Inc. assumes no liability resulting from errors or omissions in this document, or from the use of the information contained herein.

Adaptec reserves the right to make changes in the product design without reservation and without notification to its users.

Disclaimer

IF THIS PRODUCT DIRECTS YOU TO COPY MATERIALS, YOU MUST HAVE PERMISSION FROM THE COPYRIGHT OWNER OF THE MATERIALS TO AVOID VIOLATING THE LAW WHICH COULD RESULT IN DAMAGES OR OTHER REMEDIES.

Adaptec Customer Support

If you have questions about installing or using your Adaptec product, check this document first—you will find answers to most of your questions here. If you need further assistance, use the support options listed below.

Technical Support Identification (TSID) Number

- Before contacting Technical Support, you'll need your TSID. The TSID helps us provide more efficient service by accurately identifying your product and support status. The 12-digit TSID can be found on the white barcode-type label included inside the box with your product.
- Affix your TSID label here:



Support Options

- Search the Adaptec Support Knowledgebase (ASK) at <http://ask.adaptec.com> for articles, troubleshooting tips, and frequently asked questions for your product.
- For support via Email, submit your question to Adaptec's Technical Support Specialists at <http://ask.adaptec.com>.

North America

- Visit our Web site at <http://www.adaptec.com>.
- For information about Adaptec's support options, call +1 408-957-2550, 24 hours per day, 7 days per week. To speak with a Technical Support Specialist,
 - For **Hardware** products call +1 408-934-7274,
Monday to Friday, 3:00 A.M. to 5:00 P.M., Pacific Time.
 - For **RAID and Fibre Channel** products call +1 321-207-2000
Monday to Friday, 3:00 A.M. to 5:00 P.M., Pacific Time.

To expedite your service, have your computer in front of you.

- To order Adaptec products, including accessories and cables, call +1 408-957-7274.

Europe

- Visit our Web site at <http://www.adaptec-europe.com>.
- **English and French:** To speak with a Technical Support Specialist, call one of the following numbers, Monday to Thursday, 10:00 to 12:30 and 13:30 to 17:30; Friday, 10:00 to 12:30 and 13:30 to 16:30, Central European Time:
 - **English:** +32 2 352 3470
 - **French:** +32 2 352 3460

To expedite your service, have your computer in front of you.

- **German:** To speak with a Technical Support Specialist, call +49 89 456 40660, Monday to Thursday, 9:30 to 12:30 and 13:30 to 16:30; Friday, 9:30 to 12:30 and 13:30 to 15:00, Central European Time. To expedite your service, have your computer in front of you.
- To order Adaptec products, including accessories and cables, call +32 11 300 379.

Australia and New Zealand

- Visit our Web site at <http://www.adaptec.com.au>.
- To speak with a Technical Support Specialist, call +612 9416 0698, Monday to Friday, 10:00 A.M. to 4:30 P.M., Eastern Australia Time. To expedite your service, have your computer in front of you.

Hong Kong and China

- Visit our Web site at <http://www.adaptec.com>.
- To speak with a Technical Support Specialist, call +852 2869 7200, Monday to Friday, 10:00 A.M. to 5:00 P.M. To expedite your service, have your computer in front of you.
- Fax Technical Support at +852 2869 7100.

Singapore

- Visit our Web site at <http://www.adaptec.com>.
- To speak with a Technical Support Specialist, call +65 245 7470, Monday to Friday, 10:00 A.M. to 5:00 P.M. To expedite your service, have your computer in front of you.

Japan

- Visit our Web site at <http://www.adaptec.co.jp>.
- To speak with a Technical Support Specialist, call +81 3 5308 6120 Monday–Friday, 9:00 A.M. to 12:00 P.M. and 1:00 P.M. to 6:00 P.M.

Limited 5-Year Hardware Warranty

1. Adaptec, Inc. ("Adaptec") warrants to the purchaser of this product that it will be free from defects in material and workmanship for a period of five (5) years from the date of purchase. If the product should become defective within the warranty period, Adaptec, at its option, will repair or replace the product, or refund the purchaser's purchase price for the product, provided it is delivered at the purchaser's expense to an authorized Adaptec service facility or to Adaptec.
2. Repair or replacement parts or products will be furnished on an exchange basis and will either be new or reconditioned. All replaced parts or products shall become the property of Adaptec. This warranty shall not apply if the product has been damaged by accident, misuse, abuse or as a result of unauthorized service or parts.
3. Warranty service is available to the purchaser by delivering the product during the warranty period to an authorized Adaptec service facility or to Adaptec and providing proof of purchase price and date. The purchaser shall bear all shipping, packing and insurance costs and all other costs, excluding labor and parts, necessary to effectuate repair, replacement or refund under this warranty.
4. For more information on how to obtain warranty service, write or telephone Adaptec at 691 South Milpitas Boulevard, Milpitas, CA 95035, (800) 959-7274.
5. THIS LIMITED WARRANTY DOES NOT EXTEND TO ANY PRODUCT WHICH HAS BEEN DAMAGED AS A RESULT OF ACCIDENT, MISUSE, ABUSE, OR AS A RESULT OF UNAUTHORIZED SERVICE OR PARTS.
6. THIS WARRANTY IS IN LIEU OF ALL OTHER EXPRESS WARRANTIES WHICH NOW OR HEREAFTER MIGHT OTHERWISE ARISE RESPECT TO THIS PRODUCT. IMPLIED WARRANTIES, INCLUDING THOSE OF MERCHANTABILITY, FITNESS FOR A PARTICULAR PURPOSE AND NON-INFRINGEMENT SHALL (A) HAVE NO GREATER DURATION THAN 5 YEARS FROM THE DATE OF PURCHASE, (B) TERMINATE AUTOMATICALLY AT THE EXPIRATION OF SUCH PERIOD AND (C) TO THE EXTENT PERMITTED BY LAW BE EXCLUDED. IN THE EVENT THIS PRODUCT BECOMES DEFECTIVE DURING THE WARRANTY PERIOD, THE PURCHASER'S EXCLUSIVE REMEDY SHALL BE REPAIR, REPLACEMENT OR REFUND AS PROVIDED ABOVE. INCIDENTAL OR CONSEQUENTIAL DAMAGES, INCLUDING WITHOUT LIMITATION LOSS OF DATA, ARISING FROM BREACH OF ANY EXPRESS OR IMPLIED WARRANTY ARE NOT THE RESPONSIBILITY OF ADAPTEC AND, TO THE EXTENT PERMITTED BY LAW, ARE HEREBY EXCLUDED BOTH FOR PROPERTY DAMAGE, AND TO THE EXTENT NOT UNCONSCIONABLE, FOR PERSONAL INJURY DAMAGE.
7. SOME STATES DO NOT ALLOW THE EXCLUSION OR LIMITATION OF INCIDENTAL OR CONSEQUENTIAL DAMAGES FOR CONSUMER PRODUCTS, AND SOME STATES DO NOT ALLOW LIMITATIONS ON HOW LONG AN IMPLIED WARRANTY LASTS, SO THE ABOVE LIMITATION OR EXCLUSIONS MAY NOT APPLY TO YOU.
8. This warranty gives you specific legal rights, and you may also have other rights which vary from state to state.

Adaptec Software License Agreement

PLEASE READ CAREFULLY: THE USE OF THIS SOFTWARE IS SUBJECT TO THE SOFTWARE LICENSE TERMS OF ADAPTEC, INC. AND OTHER LICENSORS WHOSE SOFTWARE MAY BE BUNDLED WITH THIS PRODUCT.

BY YOUR USE OF THE SOFTWARE INCLUDED WITH THIS PRODUCT YOU AGREE TO THE LICENSE TERMS REQUIRED BY THE LICENSOR OF THAT SOFTWARE, AS SET FORTH DURING THE INSTALLATION PROCESS. IF YOU DO NOT AGREE TO THE LICENSE TERMS APPLICABLE TO THE SOFTWARE, YOU MAY RETURN THE ENTIRE UNUSED PRODUCT FOR A FULL REFUND.

In return for acquiring a license to use the Adaptec software ("Software") and the related documentation, you agree to the following terms and conditions:

1. License. This Agreement grants you, the Licensee, a license to:
 - a. Use the Software on a single computer system or on multiple workstations, systems and servers which incorporate an Adaptec RAID controller and may be accessed by multiple users from multiple locations. You may make as many installations of the Software as needed, but must restrict such installation only to systems, workstations or servers using an Adaptec RAID controller.
 - b. Make one copy of the Software in machine readable form solely for back-up purposes provided you reproduce Adaptec's copyright notice and any proprietary legends.
2. Restrictions. You may not distribute copies of the Software to others. You may not post or otherwise make available the Software, or any portion thereof, in any form, on the Internet. You may not use the Software in a computer service business, including in time sharing applications. The Software contains trade secrets and, in order to protect them, you may not decompile, reverse engineer, disassemble, or otherwise reduce the Software to a human-perceivable form. YOU MAY NOT MODIFY, ADAPT, TRANSLATE, RENT, LEASE, LOAN, RESELL FOR PROFIT, DISTRIBUTE, NETWORK OR CREATE DERIVATIVE WORKS BASED UPON THE SOFTWARE OR ANY PART THEREOF.
3. Ownership of Software. As Licensee, you own the media upon which the software is recorded or fixed, but Adaptec and its licensors retain title and ownership of the Software recorded on the original media and all subsequent copies of the Software, regardless of the form or media in which or on which the original and other copies may exist. This license is not a sale of the Software or any copy.
4. Confidentiality. You agree to maintain the Software in confidence and that you will not disclose the Software to any third party without the express written consent of Adaptec. You further agree to take all reasonable precautions to preclude access of unauthorized persons to the Software.
5. Term. This license is effective until January 1, 2045, unless terminated earlier. You may terminate the license at any time by destroying the Software (including the related documentation) together with all copies or modifications in any form. Adaptec will have the right to terminate our license immediately if you fail to comply with any term or condition of this Agreement. Upon any termination, including termination by you, you must destroy the Software (including the related documentation), together with all copies or modifications in any form.
6. Special Terms Applicable to Databases. Where a database is included with the Software, you acknowledge that it is licensed only in connection with the use of the Software to perform disc creation, and that the database and all data derived therefrom must be maintained in confidence in accordance with the provisions of Section 4. This license does not grant you any rights to distribute or disclose such database or data.
7. Limited Warranty. Adaptec and its Licensor warrant only that the media upon which the Software is furnished will be free from defects in material or workmanship under normal use and service for a period of thirty (30) days from the date of delivery to you. ADAPTEC AND ITS LICENSORS DO NOT AND CANNOT WARRANT THE PERFORMANCE OR RESULTS YOU MAY OBTAIN BY USING THE SOFTWARE OR DOCUMENTATION. THE FOREGOING STATES THE SOLE AND EXCLUSIVE REMEDIES ADAPTEC AND ITS LICENSORS WILL PROVIDE FOR BREACH OF WARRANTY. EXCEPT FOR THE FOREGOING LIMITED WARRANTY, ADAPTEC AND ITS LICENSORS MAKE NO WARRANTIES, EXPRESSED OR IMPLIED, INCLUDING, BUT NOT LIMITED, AS TO

NON-INFRINGEMENT OF THIRD PARTY RIGHTS, MERCHANTABILITY OR FITNESS FOR A PARTICULAR PURPOSE. Some states do not allow the exclusion of implied warranties or limitations on how long an implied warranty may last, so the above limitations may not apply to you. This warranty gives you specific legal rights and you may also have other rights which vary from state to state.

8. The entire liability of Adaptec and its licensors, and your exclusive remedy for a breach of this warranty, shall be:
 - a. The replacement of any media not meeting the above limited warranty which is returned to Adaptec; or:
 - b. If Adaptec or its distributor is unable to deliver replacement media which is free from defects in materials or workmanship, you may terminate this Agreement by returning the Software and your money will be refunded.
9. **Limitation of Liability.** IN NO EVENT WILL ADAPTEC OR ITS LICENSORS BE LIABLE TO YOU FOR ANY INCIDENTAL, CONSEQUENTIAL OR INDIRECT DAMAGES, INCLUDING ANY LOST PROFITS, LOST SAVINGS, OR LOSS OF DATA, EVEN IF ADAPTEC OR A LICENSOR HAS BEEN ADVISED OF THE POSSIBILITY OF SUCH DAMAGES, OR FOR ANY CLAIM BY ANY OTHER PARTY. Some states do not allow the exclusion or limitation of special, incidental, or consequential damages, so the above limitation or exclusion may not apply to you.
10. **Export.** You acknowledge that the laws and regulations of the United States and other countries may restrict the export and re-export of the Software. You agree that you will not export or re-export the Software or documentation in any form in violation of applicable United States and foreign law.
11. **Government Restricted Rights.** The Software is subject to restricted rights as follows. If the Software is acquired under the terms of a GSA contract: use, reproduction or disclosure is subject to the restrictions set forth in the applicable ADP Schedule contract. If the Software is acquired under the terms of a DoD or civilian agency contract, use, duplication or disclosure by the Government is subject to the restrictions of this Agreement in accordance with 48 C.F.R. 12.212 of the Federal Acquisition Regulations and its successors and 49 C.F.R. 227.7202-1 of the DoD FAR Supplement and its successors.
12. **General.** You acknowledge that you have read this Agreement, understand it, and that by using the Software you agree to be bound by its terms and conditions. You further agree that it is the complete and exclusive statement of the agreement between Adaptec and you, and supersedes any proposal or prior agreement, oral or written, and any other communication between Adaptec and you relating to the subject matter of this Agreement. No additional or any different terms will be enforceable against Adaptec unless Adaptec gives its express consent, including an express waiver of the terms of this Agreement, in writing signed by an officer of Adaptec. You assume full responsibility for the use of the Software and agree to use the Software legally and responsibly. This Agreement shall be governed by California law, except as to copyright matters, which are covered by Federal law. This Agreement is deemed entered into at Milpitas, California by both parties. Should any provision of this Agreement be declared unenforceable in any jurisdiction, then such provision shall be deemed severable from this Agreement and shall not affect the remainder hereof. All rights in the Software not specifically granted in this Agreement are reserved by Adaptec.

Should you have any questions concerning this Agreement, you may contact Adaptec by writing to:

Adaptec, Inc.
Legal Department
691 South Milpitas Boulevard
Milpitas, California 95035.

Regulatory Compliance Statements

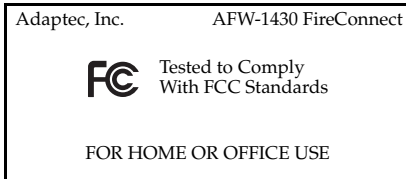
Federal Communications Commission Radio Frequency Interference Statement

WARNING: Changes or modifications to this unit not expressly approved by the party responsible for compliance could void the user's authority to operate the equipment.

This equipment has been tested and found to comply with the limits for a Class B digital device, pursuant to Part 15 of the FCC rules. These limits are designed to provide reasonable protection against harmful interference in a residential installation. This equipment generates, uses, and can radiate radio frequency energy, and if not installed and used in accordance with the instruction manual, may cause harmful interference to radio communications. However, there is no guarantee that interference will not occur in a particular installation. However, if this equipment does cause interference to radio or television equipment reception, which can be determined by turning the equipment off and on, the user is encouraged to try to correct the interference by one or more of the following measures:

- Reorient or relocate the receiving antenna.
- Increase the separation between equipment and receiver.
- Connect the equipment to an outlet on a circuit different from that to which the receiver is connected.
- Consult the dealer or an experienced radio/television technician for help.
- Use a shielded and properly grounded I/O cable and power cable to ensure compliance of this unit to the specified limits of the rules.

This device complies with part 15 of the FCC rules. Operation is subject to the following two conditions: (1) this device may not cause harmful interference and (2) this device must accept any interference received, including interference that may cause undesired operation.



European Union Compliance Statement

This Information Technology Equipment has been tested and found to comply with the following European directives:

EMC Directive 89/336/EEC, as amended by 92/31/EEC and 93/68/EEC

EN 50081-1 (1992)
EN55022 (1994) Class B
EN 50082-1 (1992)
EN61000-4-2 (1998)
EN61000-4-3 (1998)
EN61000-4-4 (1995)
EN61000-4-5 (1995) Surges
EN61000-4-6 (1996) Conducted immunity
EN61000-4-11 (1994) Supply dips of variation



Australian/New Zealand Compliance Statement

This device has been tested and found to comply with the limits for a Class B digital device, pursuant to the Australian/New Zealand standard AS/NZS 3548 set out by the Spectrum Management Agency.



Canadian Compliance Statement

This Class B digital apparatus meets all requirements of the Canadian Interference-Causing Equipment Regulations.

Cet appareil numérique de la classe B respecte toutes les exigences du Règlement sur le matériel brouilleur du Canada.

This *User's Guide* describes how to install the Adaptec AFW-1430 FireConnect for Notebooks adapter and its associated drivers in a notebook computer. This *Guide* also describes how to connect various devices.

Overview

The FireConnect for Notebooks adapter enables you to connect FireWire (also known as IEEE 1394 or i.LINK) devices to Windows[®] and Macintosh[®] notebook computers.

FireWire is a serial bus protocol that transfers data at speeds of up to 400 megabits per second. FireWire supports real-time-critical applications, such as digital video (DV) cameras, as well as applications typically requiring high throughput, such as scanners, printers, and hard drives.

The FireConnect for Notebooks adapter plugs into a CardBus slot in Windows 2000, Windows Me, and Windows 98 Second Edition (SE) notebook computers and Macintosh PowerBook computers running OS 9.0.4 and later.

The FireConnect for Notebooks adapter, with its OHCI-compliant IEEE 1394a chip set, provides three FireWire ports. The FireConnect for Notebooks adapter also provides the option of an external power supply to support devices that do not have their own power supplies.

About DV Technology

DV technology is a standard digital file and compression format for recording video and audio data onto a digital tape. DV uses compression to reduce the enormous size of the uncompressed video data (up to 50 full-screen bitmap images per second) to file sizes manageable by desktop computers.

A DV camera digitizes and compresses video before recording to tape. In playback mode, the camera can decompress DV data and display in real time. The camera can also transfer the data, using FireWire, directly to a hard drive where it can be edited and then transferred back to tape. DV conversions and data transfers provide better video quality than processes involving analog conversion.

About FireWire Technology

FireWire is an international standard data transfer protocol created by Apple Computer, Inc. and ratified by the International Standards Organization as IEEE 1394. Like other data I/O protocols such as SCSI, Fibre Channel, and IDE, FireWire itself knows nothing about video, compression, or editing. It is a series of standardized commands for moving data from one device to another.

FireWire offers advantages that make it ideal for use with audio and video devices:

- **It's fast**—It has 100/200/400 Mbps, or 12.5/25/50 MBps data transfer rates.
- **It's guaranteed**—Isochronous data transfers offer guaranteed bandwidth, ensuring full-frame, full motion video and CD-quality audio. Asynchronous transfers are also supported.
- **It's consumer friendly**—Small connectors, hot-pluggable (meaning you can connect and disconnect FireWire devices without rebooting a computer), and no need for terminators or setting device IDs.
- **It's expandable**—Supports up to 62 devices (16 daisy-chained) with a 4.5-meter flexible cable between devices over a total length of up to 72 meters or 240 feet.

Taking Inventory

Your FireConnect for Notebooks adapter kit includes the items shown below:

FireConnect for Notebooks adapter and
6-foot, 6-to-4-pin FireWire cable



FireConnect for
Notebooks CD



Installation guide,
and other literature



What's on the CD

- Readme file
- This *User's Guide*
- Adobe Acrobat software
- Windows video editing software
- Macintosh drivers and QuickTime for Macintosh
- Product registration information

System Requirements

Your notebook computer must meet the requirements outlined below for use with the FireConnect for Notebooks adapter.

Windows Notebook

- 266-MHz (or faster) processor
- Available CardBus (PCMCIA Type II) slot
- 64 MB of RAM
- Windows 2000, Windows Me, or Windows 98 SE
- CD-ROM drive

DV Editing Software (for Windows) Requirements

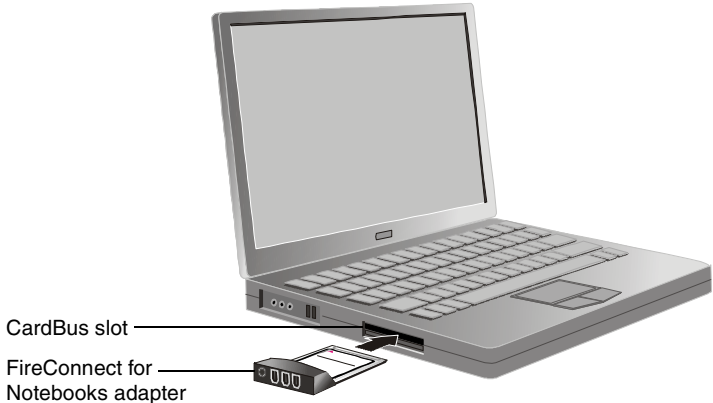
- 400-MHz (or faster) processor (800 recommended)
- 128 MB of RAM
- Display with 24-bit color depth and 1024 × 768 resolution
- Hard drive with 250 MB disk space available for program files and 5 GB disk space for DV recording (enough for 20 minutes)
- CD-R/W or DVD-R/RW drive
- DV camcorder

Macintosh Notebooks

- G3 PowerBook with 400 MHz (or faster) process
- Available CardBus (PCMCIA Type II) slot
- Macintosh OS 9.0.4 or later
- 128 MB of RAM
- CD-ROM drive

Installing the Windows Drivers

- 1 With your notebook computer on, insert the FireConnect for Notebooks adapter in the CardBus slot.



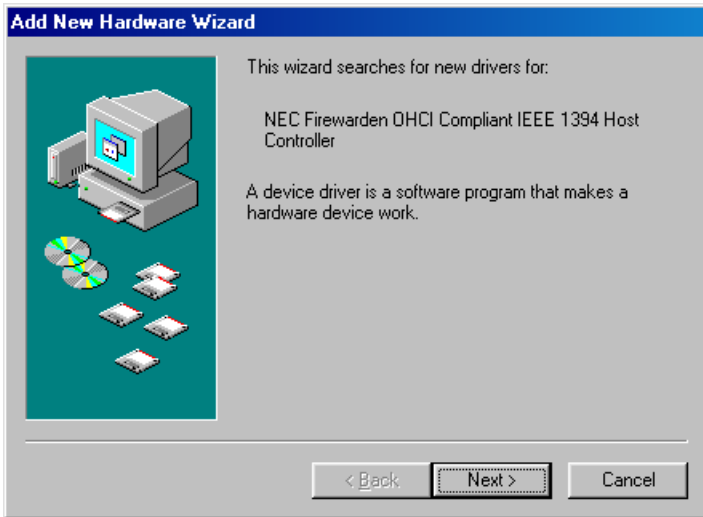
- *Windows Me and Windows 2000* – Windows automatically detects the FireConnect for Notebooks adapter and installs the drivers. Your installation is complete.



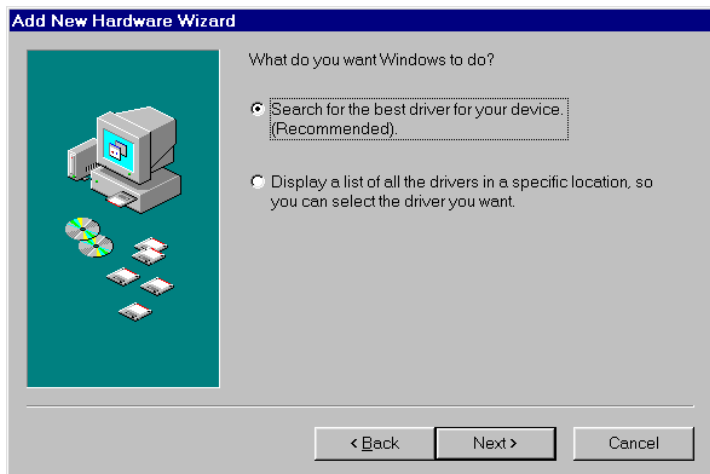
Note: *Windows 2000 only* – For instructions on removing the FireConnect for Notebooks adapter, see [page 10](#).

- *Windows 98 SE* – Continue with [Step 2](#).

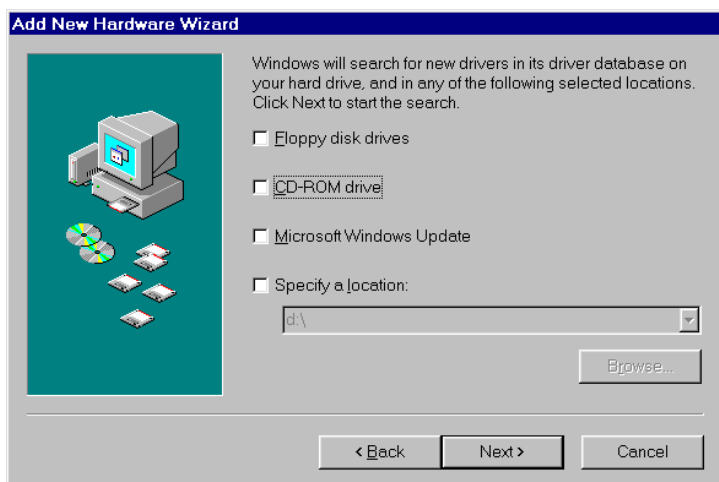
- 2 Windows 98 SE detects new hardware and displays the Add New Hardware Wizard. Click **Next**.



- 3 Select **Search for the best driver for your device (Recommended)**, and click **Next**.



- 4 Uncheck all options and click **Next**.



- 5 At the following window, select **The updated driver (Recommended)** and click **Next**.



- 6 In the window shown below, click **Next**.



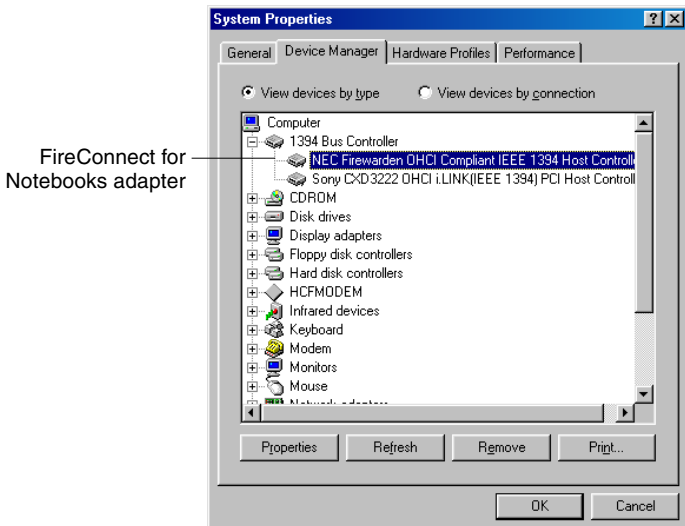
- 7 In the window shown below, click **Yes** as many times as needed to get to the screen shown in [Step 8 on page 9](#).



- 8 When the driver has been copied onto your system, the following window appears. Click **Finish**.



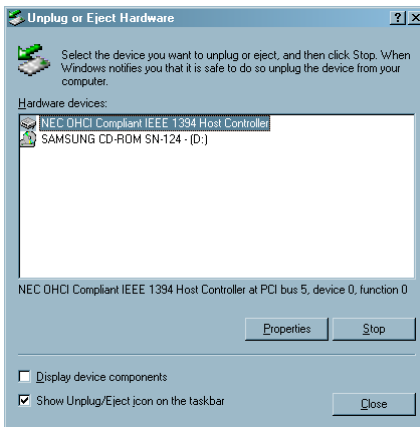
- 9 To verify that the drivers are installed, right-click the **My Computer** desktop icon, select **Properties**, and click the **Device Manager** tab. Then, expand **1394 Bus Controller**. You should see the information shown below.



Removing the FireConnect for Notebooks Adapter – Windows 2000 only

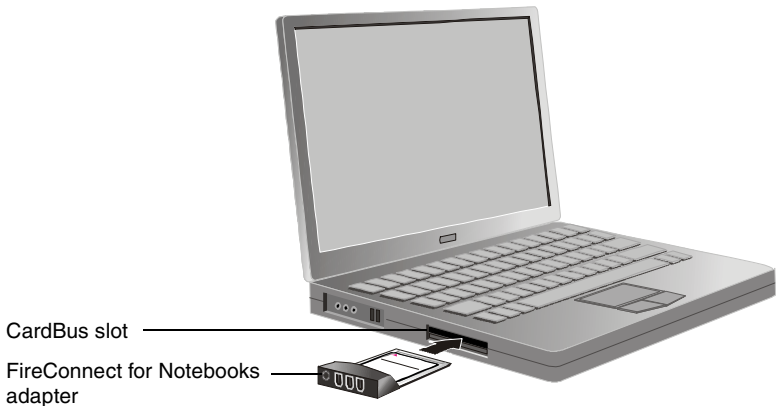
Windows 2000 requires a special operation to properly remove hardware such as the FireConnect for Notebooks adapter.

- 1 Open the Unplug or Eject Hardware wizard by clicking the icon shown at right, which is at the bottom right corner of your desktop.
- 2 The Unplug or Eject Hardware lists removable devices. Click **NEC OHCI Complaint IEEE 1394 Host Controller** and then click **Stop**.



Installing the Macintosh Driver

- 1 With the PowerBook on, insert the FireConnect for Notebooks CD.
- 2 Double-click the **Start Installation Here** installer file on the CD.
- 3 Read the directions carefully and follow all installation instructions.
- 4 After the installation is complete, restart the PowerBook.
- 5 Once the system has restarted, insert the FireConnect for Notebooks adapter in the CardBus slot of your PowerBook.



- 6 If the driver installation was successful and the FireConnect for Notebooks is fully inserted, you will see the FireConnect for Notebooks adapter icon shown at right on your desktop. If not, see [Troubleshooting on page 14](#).



Connecting Devices

The FireConnect for Notebooks kit contains one 6-to-4-pin FireWire cable. When attaching devices that do not supply their own power, attach an external power supply to the FireConnect for Notebooks adapter; use a power adapter with 12-V, 1.5-A DC output.

Daisy-Chain Connections

You can connect up to 62 devices in a daisy chain. All devices in the daisy chain must supply their own power. Non-self-powered devices may be attached using a separate FireConnect for Notebooks adapter port.

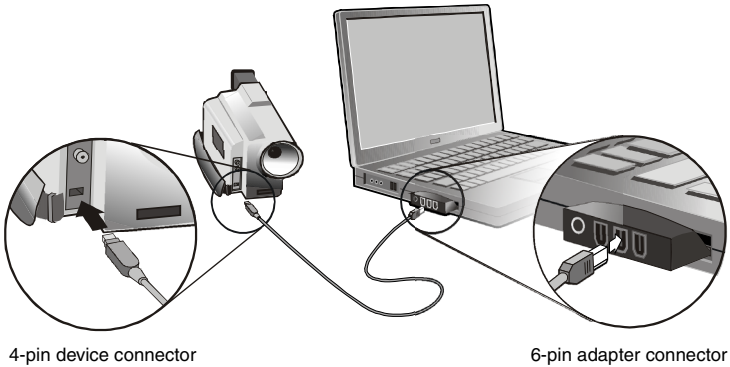
If you disconnect a daisy-chained device while the computer and other devices are powered on, the devices that come after the disconnected device on the daisy chain may malfunction until the computer is rebooted. To avoid this problem

- Use a separate port on the FireConnect for Notebooks adapter for the hot-plugged device.
- Attach the hot-plugged device at the far end of the cable from the FireConnect for Notebooks adapter.
- Use a hub (or repeater).

Connecting a Digital Video Camera

Digital video cameras with FireWire use 4-pin connectors. To attach a DV camera, perform the following steps:

- 1 Using a standard 6-to-4 pin FireWire cable (included in this kit), plug the larger, 6-pin connector of the cable into a FireConnect for Notebooks port.



- 2 Plug the smaller, 4-pin connector of the FireWire cable into the FireWire port on your digital video camera.



Caution: When inserting the 4-pin connector into the DV camera, make sure the cable connector and the DV camera port are properly aligned. Otherwise, you might bend the pins and damage the DV camera connector.

Troubleshooting

If you encounter difficulties installing or using your FireConnect for Notebooks adapter, check the following:

- Is the adapter inserted completely in the CardBus slot?
- Is the cable properly connected to the FireConnect for Notebooks adapter and the device?
- Is your device powered on? Does the device require external power from the FireConnect for Notebooks adapter?
- Are you having problems using your notebook computer after you disconnect a device? If so, restart the computer, and see if the problem clears up.
- *Windows only:* Are you using a repeater? If the Device Manager says the device is working properly, there may be a bad connection between the FireConnect for Notebooks adapter and the repeater. Shut down the computer and remove the FireConnect for Notebooks adapter from the CardBus slot. If you are using Windows 2000, see [Removing the FireConnect for Notebooks Adapter – Windows 2000 only on page 10](#). Then, reinsert the FireConnect for Notebooks adapter and reconnect the repeater.
- Under Macintosh OS 9, do you see either of the FireConnect for Notebooks adapter icons shown at right on your desktop? This means the driver is disabled or not installed. See [Installing the Macintosh Driver on page 11](#). If you have further difficulties, check the Readme file on the FireConnect for Notebooks CD and <http://www.adaptec.com>.



For more troubleshooting information, visit <http://www.adaptec.com>, <http://www.adaptec-europe.com> and <http://ask.adaptec.com>.



Adaptec, Inc.
691 South Milpitas Boulevard
Milpitas, CA 95035 USA

© 2001 Adaptec, Inc.
All rights reserved. Adaptec and the Adaptec logo
are trademarks of Adaptec, Inc. which may be
registered in some jurisdictions.

PART NUMBER: 512978-06UK, Ver. AA LOC 10/01