

MACINTOSH

Adobe® Type Manager® Deluxe 4.6

Typography

The quick brown fox jumps

abcdefghijklmnopqrstuvwxyz
ア イ ウ エ オ カ キ ク ケ コ サ
ス セ ソ タ チ ツ テ ト ナ ニ ヌ
ノ ハ ヒ フ ヘ ホ マ ミ ム メ モ
ヨ ラ ル ロ ヲ 8 7 2
k a s m d p o [s a l s
9 9 3 1 4 6 10 5 2 9 10 7 8
9 3 1 4 6 10 5 2 9 10 7 8
9 3 1 4 6 10 5 2 9 10 7 8

Includes
Adobe
Type Reunion®
Deluxe
Instructions

User Guide



© 2000 Adobe Systems Incorporated and its licensors. All rights reserved.

Adobe® Type Manager® Deluxe 4.6 User Guide for Mac OS

This manual, as well as the software described in it, is furnished under license and may be used or copied only in accordance with the terms of such license. The content of this manual is furnished for informational use only, is subject to change without notice, and should not be construed as a commitment by Adobe Systems Incorporated. Adobe Systems Incorporated assumes no responsibility or liability for any errors or inaccuracies that may appear in this book.

Except as permitted by such license, no part of this publication may be reproduced, stored in a retrieval system, or transmitted, in any form or by any means, electronic, mechanical, recording, or otherwise, without the prior written permission of Adobe Systems Incorporated.

Adobe, the Adobe logo, Acrobat, Adobe Type Manager, AdobePS, ATM, Minion, PostScript, Trajan, and Type Reunion are trademarks of Adobe Systems Incorporated. Apple, Macintosh, Mac, and Power Macintosh are trademarks of Apple Computer, Inc., registered in the United States and other countries. Microsoft, OpenType, and Windows are either registered trademarks or trademarks of Microsoft Corporation in the United States and/or other countries. All other trademarks are the property of their respective owners.

QuickHelp™ is licensed from Altura Software, Inc.

Protected by U.S. Patents 4,837,613; 5,050,103; 5,185,818; 5,200,740; 5,233,336; 5,237,313; 5,255,357; 5,602,976; 5,634,064; 5,729,637; 5,737,599; 5,754,873; 5,781,785; 5,812,140; 5,819,301; 5,832,530; 5,832,531; 5,835,634; 5,850,504; 5,860,074; 5,898,820; 5,930,396; 5,930,813; 5,943,063; 5,949,435; 5,949,968; 5,995,086; and 5,999,649; patents pending. U.S. Patent Designs 407,107; 410,025; and 415,518; Patent Designs pending.

Contains an implementation of the LZW algorithm licensed under U.S. Patent 4,558,302.

Adobe Systems Incorporated, 345 Park Avenue, San Jose, California 95110, USA

Notice to U.S. government end users. The software and documentation are “commercial items,” as that term is defined at 48 C.F.R. §2.101, consisting of “commercial computer software” and “commercial computer software documentation,” as such terms are used in 48 C.F.R. §12.212 or 48 C.F.R. §227.7202, as applicable. Consistent with 48 C.F.R. §12.212 or 48 C.F.R. §§227.7202-1 through 227.7202-4, as applicable, the commercial computer software and commercial computer software documentation are being licensed to U.S. government end users (A) only as commercial items and (B) with only those rights as are granted to all other end users pursuant to the terms and conditions set forth in the Adobe standard commercial agreement for this software. Unpublished rights reserved under the copyright laws of the United States.

Part Number: 90022820 (6/00)

Contents

Getting Started

About this guide	1
ATM Deluxe system requirements	1
ATR Deluxe system requirements	1
The ATM Deluxe CD contents	2
Registration	2
About Adobe products and services	2
Installing ATM Deluxe	2
Adding fonts after installation	3
Removing ATM Deluxe	3
Installing ATR Deluxe	4
Using online help	4
What's new in ATM Deluxe 4.6	4
What's new in ATR Deluxe 2.6	5

Managing Fonts

Chapter 1

About fonts and sets	7
Starting ATM Deluxe	8
Creating sets	8
Exporting and importing sets	9
About active sets and fonts	10
Managing fonts in the System Folder	10
Activating and deactivating sets and fonts	11
About automatic activation and font substitution	12
Adding and removing fonts	12
Managing duplicate fonts	14
Previewing and printing font samples	15
Printing an index	16
Listing and sorting font files	16
Searching for fonts	16
Copying fonts to your hard disk	17
Verifying fonts	17

**Using Multiple Master
Fonts**

Chapter 2

About multiple master font designs 19

Creating and removing custom instances 20

Automatic creation of instances 21

Customizing ATM Deluxe

Chapter 3

Display and printing 23

ATM Deluxe settings 25

Samples, indexes, and reports 25

Using ATR Deluxe

Chapter 4

About ATR Deluxe 27

Opening ATR Deluxe 27

Setting general options 27

Defining and using font groups 28

Naming and displaying fonts
in menus 29

Turning ATR Deluxe on and off with applications 30

Using ATR Deluxe with ATM Deluxe 31

**Troubleshooting
ATM Deluxe**

Chapter 5 33

Index 39

Getting Started

Welcome to the Adobe® Type Manager® Deluxe and Adobe Type Reunion® Deluxe utilities.

Adobe Type Manager (ATM®) Deluxe is an award-winning tool for managing, displaying, and printing PostScript® Type 1 and OpenType® fonts. With ATM Deluxe, you can easily organize and control the activation of fonts in customized sets, so applications load only the fonts you need. ATM Deluxe automatically activates inactive fonts and mimics those that are missing.

ATM Deluxe lets you create custom instances of multiple master fonts, obtain font verification reports, and identify and remove duplicate fonts. ATM Deluxe also improves on-screen type display and allows you to print PostScript fonts to non-PostScript printers.

Adobe Type Reunion (ATR) Deluxe lets you organize fonts and control font menus in your applications.

About this guide

This guide describes how to install and use ATM Deluxe 4.6 and ATR Deluxe 2.6 on the Mac OS platform.

This guide assumes that you have a working knowledge of your computer and its operating system. For information on PostScript, display, resolution, and printers, see your system or printer documentation.

ATM Deluxe system requirements

ATM Deluxe requires the following hardware and software:

- An Apple Power Macintosh computer
- 16 MB of RAM
- A hard disk with at least 10 MB of free space (73 MB required for custom language installation)
- A CD-ROM drive
- Mac OS version 8.1 or later

ATM Deluxe is compatible with nearly all Mac OS applications, all PostScript language printers, and many non-PostScript printers. See the ATM Deluxe Read Me file for information on application and printer compatibility.

ATR Deluxe system requirements

ATR Deluxe requires the following hardware and software:

- An Apple Power Macintosh computer
- 8 MB of RAM
- A hard disk with at least 3 MB of free space (53 MB required for custom language installation)
- A CD-ROM drive
- Mac OS version 8.1 or later

The ATM Deluxe CD contents

The ATM Deluxe CD includes the following applications and files:

- The ATM Deluxe installer
- The ATR Deluxe installer
- Adobe PostScript (AdobePS®) printer driver
- Adobe Type Library fonts
- Adobe Acrobat® Reader
- Technical documents
- Adobe product information

Registration

To continue receiving the highest quality software, technical support, and information about new developments, please return the enclosed warranty registration card or follow the on-screen instructions during installation to register online.

About Adobe products and services

If you have an Internet connection and a Web browser installed on your system, you can access the Adobe Systems home page on the World Wide Web (at <http://www.adobe.com>) for information and tips on Adobe products and services. From the Adobe Web site, you can purchase and download fonts and certain other Adobe products.

For more information about Adobe technical support resources, see the notice in your software package.

Installing ATM Deluxe

The ATM Deluxe installer program installs the following items:

- The ATM Deluxe application and the ATM Deluxe Read Me file are installed on the hard disk in the ATM Deluxe folder. The application provides font management capabilities.
- The ATM Control Panel (~ATM) is added to the Control Panels folder in the active System Folder. The Control Panel runs in the background to improve font printing and display.
- The ATM Font Database file is added to the System Folder.
- A folder named Adobe Type Manager is added to the Preferences folder in the System Folder.
- Adobe Type Library fonts are installed on the hard disk in the Adobe Fonts folder.
- An alias for ATM Deluxe is added in the Apple Menu Items folder within the System Folder.

To install ATM Deluxe software on your system:

- 1 Turn off all virus-protection software and restart your computer.
- 2 Insert the ATM Deluxe CD into your CD-ROM drive.
- 3 Double-click the ATM Deluxe 4.6 Installer icon.
- 4 When prompted, read or print the Read Me file, and click Continue.

5 In the Installer window, select one of the following options from the pop-up menu:

- Easy Install installs ATM Deluxe, all fonts, and other required files contained in the ATM Deluxe package.
- Custom Install lets you select the components you want to install. Click the Information icon (the small *i*) for information about each component.

6 Follow the on-screen instructions to complete the installation.

Adding fonts after installation

When installation is complete, the installer automatically restarts the computer and launches ATM Deluxe. ATM Deluxe manages fonts that are added to its Known Fonts list. You are prompted to let ATM Deluxe search your hard disk and add fonts to this list. (This is known as adding fonts to ATM Deluxe, but the font files themselves are not moved.) When adding fonts, ATM Deluxe verifies that they are properly configured. If it detects an error, the font is displayed in red in the Known Fonts list. For more information, see “Verifying fonts” on page 17.

This search usually takes only a minute or two. If you do not select the automatic search, ATM Deluxe adds only those fonts that are stored in the System Folder. You can add other fonts later (see “Adding and removing fonts” on page 12).

To start the search and add fonts to ATM Deluxe:

1 When prompted to search your hard disk for fonts, click Search.

2 In the Add Fonts dialog box, choose Known Fonts from the Add To pop-up menu.

3 If you want to automatically activate all the fonts as they are added, rather than activating individual fonts later, select Activate Fonts when Added to ATM Deluxe. Activated fonts appear in application Font menus (see “About active sets and fonts” on page 10). Fonts in the Fonts folder within the System Folder are always activated.

4 Click Add All. ATM Deluxe adds all the fonts it finds on your hard disk. When all fonts are added, click Done.

***Note:** If you stored the same font in two or more locations, ATM Deluxe adds the font from each location to the Known Fonts list. Because duplicate fonts can cause font ID conflicts, you should remove any duplicates from ATM Deluxe (see “Managing duplicate fonts” on page 14).*

Removing ATM Deluxe

You can remove the ATM Deluxe program from your system easily. Removing ATM Deluxe does not delete fonts from your system, but it may prevent the fonts from displaying and printing properly.

To remove ATM Deluxe:

1 Start the ATM Deluxe 4.6 Installer.

2 Choose Remove from the pop-up menu in the Installer window, click Remove, and then follow the on-screen instructions.

***Note:** Preference files are not removed.*

Installing ATR Deluxe

The ATR Deluxe installer program adds the ATR Deluxe Control Panel to the Control Panels folder in your System Folder.

To install ATR Deluxe software on your system:

- 1 Turn off all virus-protection software and restart your computer.
- 2 Insert the ATM Deluxe CD into your CD-ROM drive.
- 3 Double-click the ATR Deluxe 2.6 Installer icon.
- 4 When prompted, read or print the Read Me file, and click Continue.
- 5 In the Installer window, select one of the following options from the pop-up menu:
 - Easy Install installs ATR Deluxe and other required files.
 - Custom Install lets you select the components you want to install. Click the Information icon (the small *i*) for information about each component.
- 6 Select where you want to install ATR Deluxe utilities by choosing a disk or a specific folder.
- 7 Follow the on-screen instructions to complete the installation.

Using online help

Information in this guide is available in online help for ATM Deluxe and ATR Deluxe.

To get online help:

Choose Help > Contents to display the table of contents for online Help, or choose Help > How to Use Help to display information on using Help.

What's new in ATM Deluxe 4.6

In addition to online Help, the software includes the following new features:

- You can now use ATM Deluxe to display, manage, and print OpenType fonts.
- You can Option-drag a set from ATM Deluxe to your hard disk, to create a folder containing a copy of the fonts in that set.
- You can specify whether a set remains in its current state on restart, or is automatically activated, deactivated, or deleted on restart.
- New tools are provided for managing duplicate fonts.
- You can set preferences to specify whether to check for duplicates and whether to activate the new fonts when adding fonts to ATM Deluxe.
- You can activate a new set when you create it.
- You can use *marquee selection* (dragging to define a rectangular area that includes the selected objects).
- If your system supports double-byte fonts (for example, Japanese fonts), you can activate, deactivate, preview, and print samples of the fonts.

- When sorting list contents by name, ATM Deluxe now sorts by script before sorting by name. This provides separate sorting of fonts with different character encodings (for example, Roman and Japanese fonts).
- If ATM Deluxe marks a font as damaged, but you have had no problems using the font, you can choose to mark the font as undamaged.
- You do not have to mark font files as read-only in order to share them on a network.

What's new in ATR Deluxe 2.6

In addition to online Help, ATR Deluxe includes support for OpenType fonts.

Chapter 1: Managing Fonts


Adobe Type Manager Deluxe lets you organize, activate, preview, and verify fonts, providing comprehensive font management. Applications load only the fonts you need, saving time and improving performance. You can also use ATM Deluxe to create and manage instances of multiple master fonts; see Chapter 2, “Using Multiple Master Fonts.”


About fonts and sets

A Type 1 PostScript font has two parts: an outline file and a bitmap file. A *bitmap file* contains spacing information and specific font sizes designed for on-screen display only. An *outline file* contains PostScript information that creates a smooth font on-screen (for sizes other than those in the bitmap file) and on the printed page (at any size). A TrueType font file contains both types of information.

Double-byte fonts (such as Chinese, Japanese, and Korean fonts) have other bitmap files containing different information. These fonts may include multiple outline files and fbit (Marukan) files.

ATM Deluxe uses both outline and bitmap data to generate a high-quality display on-screen. ATM Deluxe automatically tracks the location of outline files. Even without an outline file, ATM Deluxe can still generate a display of most fonts by using multiple master substitution fonts and the ATM Deluxe font database. See “About automatic activation and font substitution” on page 12.

Bitmap files and TrueType fonts are commonly referred to as *suitcases*. A suitcase contains one or more individual fonts (in the case of TrueType) or font references (in the case of PostScript). The Minion suitcase, for example, might contain Minion, Minion Bold, Minion Italic, Minion Bold Italic, and other Minion fonts. ATM Deluxe uses a suitcase icon with the letter A () to show most fonts in lists.

OpenType is a new font format created jointly by Adobe and Microsoft® that can contain either PostScript or TrueType font outlines. OpenType fonts may contain an expanded character set that offers richer linguistic support and advanced typographic capabilities. OpenType fonts consist of one cross-platform font file. ATM Deluxe uses a suitcase icon with the letter O () to show OpenType fonts in lists.

If you use many fonts for different projects and applications, you can use ATM Deluxe to organize fonts into sets and then activate only the fonts you need for the current project. A *set* is a list of fonts that ATM Deluxe records and stores. When you create sets, the font files themselves are not moved, copied, or duplicated, but remain in their current locations. Thus, one font can appear in several sets.

Applications load only fonts stored in the Fonts folder within the System Folder and activated fonts. By limiting the number of loaded fonts, you can improve the performance of your applications and simplify your Font menus.

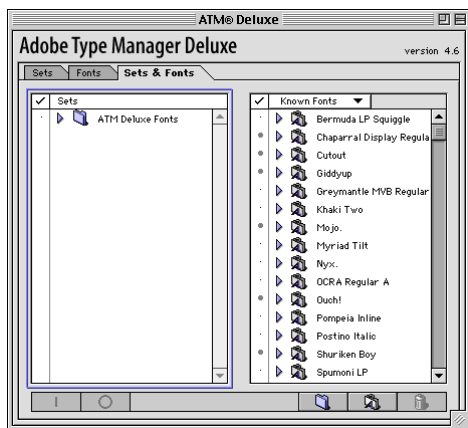
Starting ATM Deluxe

To manage fonts, you need to start ATM Deluxe. When it starts, ATM Deluxe checks all fonts in its Known Fonts list for proper configuration.

Note: For information on starting ATM Deluxe from an application Font menu, see “Using ATR Deluxe with ATM Deluxe” on page 31.

To start ATM Deluxe:

Choose Apple > ATM Deluxe, or double-click the ATM Deluxe application icon. The ATM Deluxe window appears.



Note: You can also display the ATM Deluxe window by choosing Apple > Control Panels > ~ATM. This command does not display a window for the ATM Control Panel, which continues to run in the background.

Creating sets

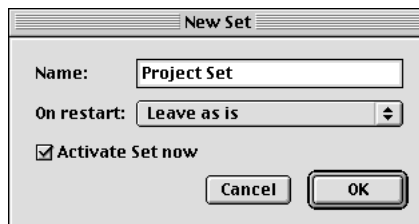
You can create as many sets as you need. For example, you might group fonts by project, by name, or by function (display fonts, body text fonts, symbol fonts) and activate the sets you use for your current work. If multiple users share the same computer, you could create sets for each user. You can add as many fonts as you need to each set.

Note: If you add fonts after installing ATM Deluxe, they are placed in an automatically created set named ATM Deluxe 4.6 Fonts (see “Adding fonts after installation” on page 3).

To create a set:

- 1 Click the Sets & Fonts tab.
- 2 Create a set in one of the following ways:
 - Choose File > New Set.
 - Click the New Set button (📁) at the lower right.
 - Drag a suitcase (or a folder of font files) from any location onto the New Set button.
- 3 Set options for the new set and then click OK:

💡 When you use any of these methods to create a new set, you can hold down the Option key to bypass the New Set dialog box.



- Enter a name for the set.
- To activate the set as soon as you create it, select Activate Set Now.
- To specify whether the set remains in its current state on restart, or is activated, deactivated, or deleted on restart, choose an option from the On Restart pop-up menu.

4 Add fonts to the set in one of the following ways:

- Drag fonts from the Known Fonts list to the set.
- Drag fonts from any other location to the set.
- Select the set, click the Add Font button (📁) at the lower right, locate a font or a folder of font files, and then click Add or Add All.

To remove a font from a set:

- 1 Click the Sets or Sets & Fonts tab, and then open the set and select the font.
- 2 Do one of the following:
 - Choose Edit > Clear.
 - Drag the font to the ATM Deluxe Trash button.
 - Select the font in the set and press Delete.

With any of these methods, the font is removed from the set, but remains in the Known Fonts list. If you want to remove the font from ATM Deluxe, see “Adding and removing fonts” on page 12.

Exporting and importing sets

Once you’ve created sets, you can export one or more sets as a file, then import them for use on other computers running ATM Deluxe, including computers on the Microsoft® Windows® platform.

ATM Deluxe exports sets by creating an export file that contains information about the sets.

Exporting a set does not create copies of font files. By default, the export filename includes the set name and the .afs extension. If you export multiple sets, ATM Deluxe uses a single export file named after the first set. When imported, however, the sets are automatically separated.



Exporting sets is a good way to store a backup file of your sets. If the sets are ever deleted accidentally within ATM Deluxe, you can restore them by importing the backup file.

To export sets:

- 1 Click the Sets or Sets & Fonts tab, and select one or more sets to export.
- 2 Choose File > Export Set.
- 3 Specify a name and location for the export file, and then click Save.

To import sets:

- 1 Choose File > Import Set.
- 2 Locate a set export file, and click Open. Sets in the export file are added to the Sets list. If ATM Deluxe cannot find a font listed in a set on the destination system, it displays the Locate Font dialog box. If you import a set that already exists in ATM Deluxe, you are prompted either to merge fonts into the existing set or to create a new set.
- 3 If necessary, enter a set name and click OK.



You can also import a set by clicking the Sets or Sets & Fonts tab and dragging a set export file onto the Sets list.

About active sets and fonts

Activating or deactivating specific sets lets you simplify font menus and improve system performance. If you create sets for different projects, you can efficiently manage fonts and system resources by activating only those sets that you need for your current project.

All the fonts in an active set are active unless individually deactivated. Individual fonts within a suitcase cannot be activated or deactivated; they have the same state as the suitcase.

Applications include a font in their Font menus if the font is active in at least one set, if the font is in the Fonts folder in the System Folder, or if the font has been activated from the Known Fonts list.

ATM Deluxe displays the current state of sets and fonts in the left column of each panel in the ATM Deluxe window, using these activation symbols:

- A filled circle (●) indicates that a set and all its fonts are active.
- An empty circle (○) indicates that some fonts in a set are active.
- A small dot (•) indicates that a set and all its fonts are deactivated.
- A gray filled circle (◐) indicates that a font is stored in the Fonts folder in the System Folder; it cannot be deactivated.
- An A indicates that an inactive font has been automatically activated.

Managing fonts in the System Folder

Fonts stored in the Fonts folder within the System Folder cannot be deactivated. If you want to deactivate them, you can move the font files to another location on the same drive. ATM Deluxe automatically tracks their new location and lets you activate or deactivate them.

You can move all fonts from the Fonts folder in the System Folder except those required by your language version of Mac OS or by automatic substitution. Do not move these fonts: Monaco, Geneva, Charcoal, Chicago, Osaka, Taipei, Beijing, Seoul, Adobe Sans MM, and Adobe Serif MM.

To move fonts from the System Folder:

- 1 Close all applications and create a destination folder for the fonts you want to move.
- 2 Select the fonts and drag them to the destination folder.

Note: *If the destination folder is on a different drive, be sure to copy the fonts to the new folder before you remove them from the System Folder. After you copy the fonts and drag the originals from the System Folder to the system Trash, add the fonts in the destination folder to ATM Deluxe (see “Adding and removing fonts” on page 12).*

When moving a Japanese font, move all the components (the suitcase, single or multiple Marukan files, font outline files, and the folder containing the outline files). The suitcase and Marukan files have the name that appears in Font menus. The outline files and the folder that contains them have similar names in English.

Activating and deactivating sets and fonts

You can control the fonts that appear in application Font menus by activating and deactivating sets and fonts in the following ways:

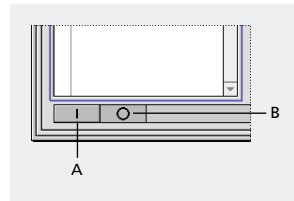
- You can add several fonts to or remove several fonts from Font menus by activating or deactivating an entire set. All fonts in the set have the same state as the set, unless individually changed.
- You can specify whether a set is active or inactive on restart.
- You can set a preference to activate fonts when they are added to ATM Deluxe (see “ATM Deluxe settings” on page 25).
- You can add a font to Font menus by activating the font in a set or in the Known Fonts list.
- If you are using ATR Deluxe, you can activate and deactivate sets from the Font menus of compatible applications (see “Using ATR Deluxe with ATM Deluxe” on page 31).

Note: Some applications can update the Font menu if you activate or deactivate a font while the application is running; others may not update the Font menu until you restart the application. For information about specific applications, see the ATM Deluxe Read Me file.

To activate or deactivate a set:

- 1 Click the Sets or Sets & Fonts tab, and select a set.
- 2 Activate or deactivate the set in one of the following ways:
 - Choose Tools > Activate or Tools > Deactivate.

- Click the circle or dot in the left column, which indicates the current activation status (see “About active sets and fonts” on page 10).
- Click the Activate or Deactivate button at the lower left of the window.



A. Activate B. Deactivate

To specify whether a set is active on restart:

- 1 Click the Sets or Sets & Fonts tab.
- 2 Select the set and choose Tools > Font Set Properties, or Control-click the set.
- 3 Choose from the On Restart pop-up menu to specify the state of the set on restart:
 - Click Leave As Is to leave the set in its state at the time of shutdown.
 - Click Delete to remove the set from ATM Deluxe. Fonts that are only in deleted sets are also removed from ATM Deluxe (but not from your hard disk).
 - Click Activate to activate the set on restart.
 - Click Deactivate to deactivate the set on restart.

Note: You can also specify a set's status on restart when you create it (see “Creating sets” on page 8).

To activate a font:

In the Known Fonts list, do one of the following:

- Click the activation symbol to the left of the font (see “About active sets and fonts” on page 10).
- Select one or more fonts, and then click the Activate button at the lower left of the window, or choose Tools > Activate.

To deactivate a font within a set:

- 1 Click the Sets or Sets & Fonts tab, and then open a set and select one or more fonts.
- 2 Choose Tools > Deactivate. The fonts are deactivated within the set, but they will continue to appear in application Font menus if they are active in any other set.

To globally deactivate a font:

- 1 Click the Fonts tab, and select one or more fonts.
- 2 Choose Tools > Deactivate. The fonts are deactivated in the Known Fonts list and in all sets, and no longer appear in application Font menus.



You can also globally deactivate a font by pressing Control+Command while clicking the activation symbol to the left of the font.

About automatic activation and font substitution

ATM Deluxe displays inactive or missing fonts automatically when you turn on auto-activation or font substitution (see “Display and printing” on page 23).

If auto-activation is on and you open a document that contains fonts that are currently deactivated, ATM Deluxe temporarily activates the fonts. They remain active until you quit the application or restart the system, depending on how you set the preference for automatic activation.

If font substitution is on and you open a document that requires fonts not on your system, the ATM Control Panel mimics the size and spacing of the missing fonts by using the multiple master substitution fonts (Adobe Sans MM and Adobe Serif MM) and information in the ATM font database. This preserves line and page breaks but only approximates the appearance of the missing font. Some programs that detect missing fonts do not support ATM font substitution. For information on application compatibility, see the ATM Deluxe Read Me file.

Adding and removing fonts

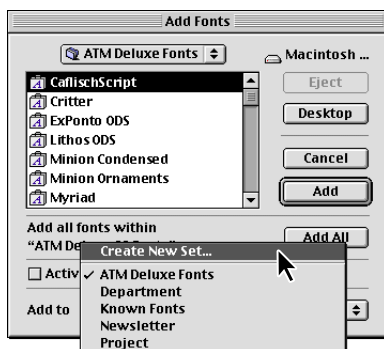
When installing fonts on your system, you need to make ATM Deluxe aware of them, so it can correctly display them on-screen. When you add fonts to ATM Deluxe, it stores references to them but does not copy or move font files. ATM Deluxe verifies that fonts are properly configured when they are added. If ATM Deluxe finds an error, the font is displayed in red in the Known Fonts list. You can add fonts by using the Add Fonts command or by dragging and dropping fonts into ATM Deluxe from your hard disk or other location (such as a server or inserted media).

When you remove fonts from ATM Deluxe, the references are deleted but the fonts remain on your hard disk (except when you remove duplicates from the hard disk; see “Managing duplicate fonts” on page 14). If you are not removing duplicates and want to remove fonts from your hard disk, you must drag the font files from their location on your hard disk to the system Trash.

Before you permanently remove fonts from your hard disk, you should globally remove the font references from ATM Deluxe. Globally removing a reference removes the font name from the Known Fonts list and from all sets.

To add fonts by using the Add Fonts command:

- 1 Choose Tools > Add Fonts.



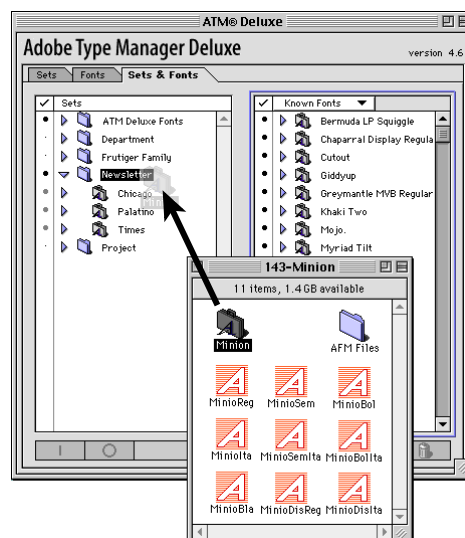
- 2 For Add To, choose whether you want to add the font to the Known Fonts list, to an existing set, or to a new set. (Fonts added to a set are also automatically added to the Known Fonts list.)
- 3 Open a volume or folder containing one or more fonts, and specify the fonts to add:

- Click Add to add a selected font.

- Click Add All to add all of the fonts in the volume or folder.


To add fonts by dragging and dropping:

- 1 Click the Sets & Fonts tab.
- 2 Drag a suitcase from your hard disk or other location onto a set or into the Known Fonts list.



To globally remove a font from ATM Deluxe:

- 1 Click the Fonts or Sets & Fonts tab, and select the font from the Known Fonts list.
- 2 Choose Edit > Clear, press Delete, or drag the font to the ATM Deluxe Trash button.

 You can also globally remove a font from ATM Deluxe by selecting the font from a set and pressing Control+Command+Delete.

Managing duplicate fonts

If you install the same font file in two or more locations, ATM Deluxe adds the font from each location to the Known Fonts list. Because duplicate fonts can cause font ID conflicts, ATM Deluxe notifies you when a newly installed font is a duplicate (if you have set a preference to receive the alert; see “ATM Deluxe settings” on page 25). ATM Deluxe provides tools for viewing duplicate font information and removing duplicates.

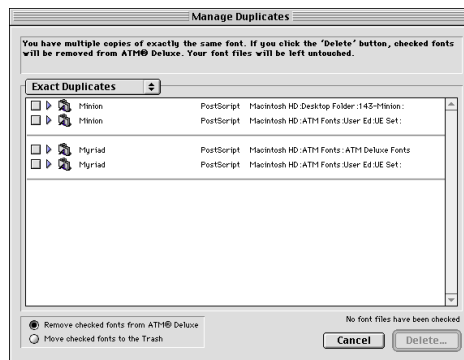
Note: Some applications contain a folder for fonts required to start or use the application. If you remove duplicate fonts from an application’s font folder, you may have problems using the application.

To manage duplicate fonts:

1 Choose Tools > Manage Duplicate Fonts. ATM Deluxe reports the number of duplicates in these categories:

- Exact duplicates are fonts that have the same name and the same technology (for example, Type 1 or TrueType).
- Format conflicts are fonts that have the same name but a different technology.
- Font subsets are cases in which the fonts in one suitcase are a subset of the fonts in another suitcase (that is, the other suitcase contains all the fonts in the first suitcase, and additional fonts).
- Font overlaps are cases in which two suitcases have one or more fonts with the same name, but each suitcase also contains fonts not present in the other.

2 To view more information on duplicate fonts, click Continue. ATM Deluxe shows the first category of duplicate fonts found (in the order listed in the preceding step).



3 To view information on other types of duplicates, choose the category from the pop-up menu at the upper left.

4 If you want to remove duplicates, specify how to remove them:

- Click Remove Checked Fonts from ATM Deluxe to globally remove references to the selected fonts from ATM Deluxe. The font files themselves are not affected.
- Click Move Checked Fonts to the Trash to globally remove references to the selected fonts from ATM Deluxe, and to also move the fonts to the system Trash.

Note: You cannot remove fonts located in the Fonts folder in the System Folder. Also, ATM Deluxe does not move font files on servers to the system Trash.

5 Click the check box to the left of each font you want to remove. You can switch among categories while you check the fonts you want to remove.

6 After you have checked at least one font, choose Summary from the pop-up menu at the upper left to view a list of all the fonts you have checked.

7 Click Delete. If you are moving checked fonts to the system Trash, you are prompted to confirm the move.

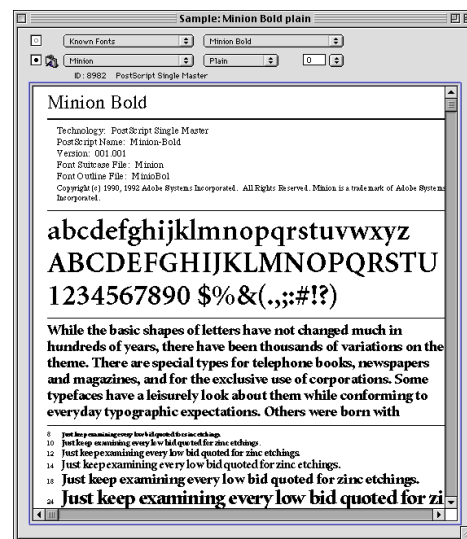
Previewing and printing font samples

You can preview and print samples of a font in a Sample window, which lists font information and displays the character set, text at various point sizes, and a sample paragraph. You can change the preview display by setting Printing preferences (see “Samples, indexes, and reports” on page 25).

You cannot preview two special multiple master fonts: Adobe Sans MM and Adobe Serif MM. These fonts are used for font substitution only (see “About automatic activation and font substitution” on page 12).

To preview a font in ATM Deluxe:

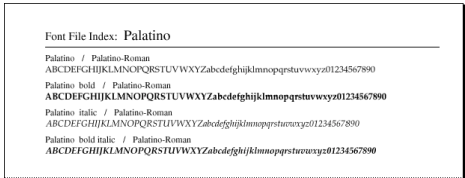
1 Select a font and choose Window > New Sample Window, or double-click a font. If you select multiple fonts and double-click one, ATM Deluxe previews each font in a separate window.



2 In the Sample window, use the pop-up menus to preview other fonts.

Printing an index

You can print an index of fonts in a specified set. The index lists each font in the set, showing as many letters of the alphabet and numerals 0 through 9 as fit on a single line in 14-point type.



To print an index:

- 1 Click the Sets or Sets & Fonts tab.
- 2 Select one or more sets, or open a set and select one or more fonts.
- 3 Choose File > Print Font Index. ATM Deluxe prints a sample of each font. To customize the sample text, see “Samples, indexes, and reports” on page 25.

Listing and sorting font files

ATM Deluxe lets you list different categories of fonts and sort them by certain attributes.

To list and sort font files:

- 1 Click the Fonts or Sets & Fonts tab and then choose the category of fonts you want to display from the pop-up menu:
- Known. All the fonts added to ATM Deluxe.
 - Active. Active fonts.

- System. Fonts stored in the Fonts folder in the System Folder. These fonts cannot be deactivated.
- Damaged. Fonts that ATM Deluxe considers severely corrupted, which may cause problems with your system. For more information, see “Verifying fonts” on page 17.

2 Choose Tools > Sort List Contents to sort fonts by the following attributes: name, size, last activated, and last modified.

Searching for fonts

If you have added a large number of fonts to ATM Deluxe and need to find one quickly, you can search for font names in the Known Fonts list or search within a particular set. You can also use ATM Deluxe to view the location on your hard disk of any font added to ATM Deluxe.

To search for a font within ATM Deluxe:

- 1 Choose Tools > Find Font.



- 2 From the Search In pop-up menu, choose whether ATM Deluxe searches the Known Fonts list or a particular set.

3 Choose the parameters of the search in the other pop-up menus and click Find. ATM Deluxe highlights the first font it finds that matches the parameters.

4 Choose Tools > Find Next Font to find the next match.

To view a font location on your hard disk:

Hold down the Command or the Control key and click a font name. The location appears as a pop-up list of folders, including the volume name.

Copying fonts to your hard disk

You can copy (but not move) sets and fonts from ATM Deluxe to your hard disk. Copying sets creates folders that contain all the font files in the selected sets. If you want to transfer information about sets without copying them, see “Exporting and importing sets” on page 9.

To copy fonts to your hard disk:

Do one of the following:

- Option-drag a set or font file to an existing destination.
- Choose Tools > Copy Font/Set, select a set or font, and either select a destination or create a new folder that will contain the copy.

Verifying fonts

You can verify the integrity of fonts on your system and obtain detailed reports about the fonts, including font face, bitmap, and PostScript information, as well as any font errors that are encountered during verification. You can display either a summary or a detailed report.

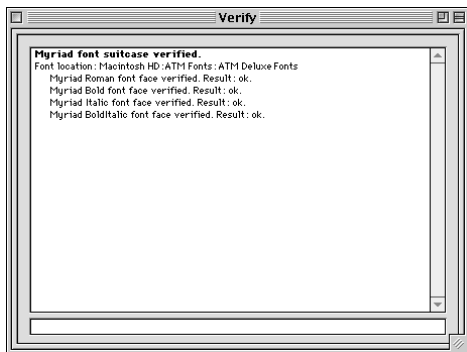
ATM Deluxe reports the following types of status for a font:

- OK. The font contains no errors.
- Notice. Internally, the font may not be formatted properly, but if you have not encountered problems, you do not need to take further action.
- Error. The font may contain an error that could affect display, printing, or system operation. If the error affects system operation, the font is considered damaged, and the font icon appears in red in the font list.

Note: *If you believe a damaged font can be used safely, you can mark it as undamaged by choosing Tools > Mark as Undamaged.*

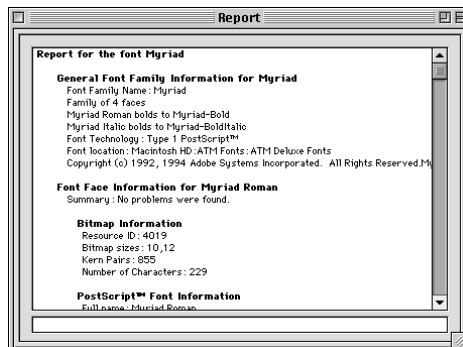
To obtain a verification summary:

- 1 Select a set, suitcase, or font.
- 2 Choose Tools > Verify. ATM Deluxe displays the verification summary in the Verify window. If you selected a set or suitcase, the summary lists all included fonts.

**To obtain a detailed report:**

- 1 Select a set, suitcase, or font.
- 2 Choose Tools > Report. ATM Deluxe displays the report in the Report window. If you selected a set or suitcase, the report lists all included fonts.

- 3 To save the report as a text file, choose File > Save As, specify a filename and location, and click Save.

**To mark fonts as undamaged:**

Select a suitcase and choose Tools > Mark as Undamaged. The selected fonts are marked as undamaged and are removed from the Damaged Fonts list. ATM Deluxe then examines the fonts again. If they are found to have a type of damage that would cause a system crash, they are marked as having 0 (zero) fonts and cannot be activated. If you want to use the fonts, reinstall them (or, if you are certain that they are undamaged, move the font files from their current location to the Fonts folder in the System Folder).

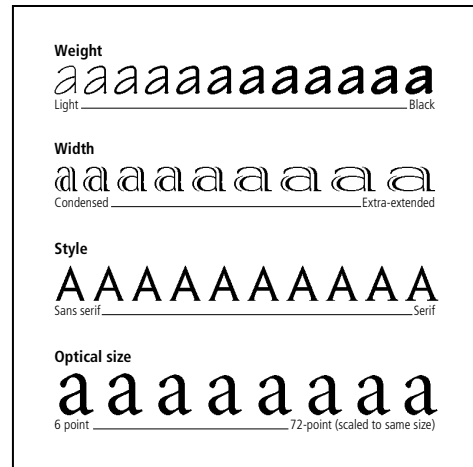
Chapter 2: Using Multiple Master Fonts

Multiple master fonts let you create custom renditions by varying typeface attributes such as width, height, or weight. You can use multiple master fonts as you would any other PostScript Type 1 font.

About multiple master font designs

In Mac OS, a multiple master font consists of one or more instances of the font. An *instance* is a particular rendition of the font that varies from other instances in one or more attributes. The manufacturer of each multiple master font provides a set of ready-to-use *primary instances* that constitute a complete typeface family.

Each multiple master font includes one or more *design axes*. A design axis is a variable attribute, such as weight, width, style, or optical size.

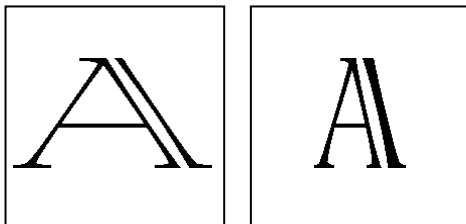


You can vary attributes in each design axis available in the multiple master font.

To find out which design axes are included with a multiple master font, see your multiple master font package. If you have already installed the font, you can display the design axes available for it in ATM Deluxe. For information on viewing the axes and modifying multiple master fonts, see “Creating and removing custom instances” on page 20.

The convention for naming multiple master instances is *Family_design coordinates*, where *Family* is the name of the typeface and *design coordinates* identifies a particular instance by a string of numbers and letters.

The design coordinates are alphanumeric combinations for each design axis in the font. If the font has a single design axis, there is a single alphanumeric combination (for example, 240 RG for Regular weight). If there are two design axes, there are two alphanumeric combinations, and so on.



Instance names, like VivaMM_250 LT 1500 XE (left) and VivaMM_385 RG 400 CN (right), indicate each font's design attributes.

Within a design coordinate name, numbers indicate the position of the instance along the design axis. Letters indicate style (such as regular, bold, or condensed) for a primary instance, or the design axis (such as weight or width) for a custom instance. Abbreviations for primary instances use uppercase letters (for example, XL for Extra-Light). Abbreviations for custom instances use lowercase letters (for example, wt for weight and wd for width).

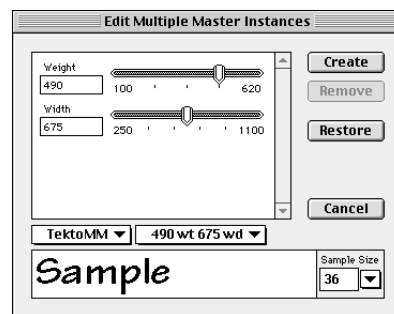
Note: Some Font menus and font lists in applications are limited in width. Longer instance names may appear clipped.

Creating and removing custom instances

You create *custom instances* by using controls in ATM Deluxe to modify the design axes of primary instances. ATM Deluxe automatically adds the custom instance to the multiple master font. After creating a custom instance, you can place its font in one or more active sets, so that all primary and custom instances appear in Font menus in your applications. If you create a custom instance for a font that already belongs to a set, the instance is automatically added to the set.

To create a custom instance:

- 1 In ATM Deluxe, click the Fonts tab and select a multiple master font.
- 2 Choose Tools > Create Multiple Master.



- 3 In the text box, type one or more words to use as the sample display, and select a point size for the sample.
- 4 Choose a primary instance or a previously created custom instance from the pop-up list on the right.

5 Use the slider controls to modify the instance. Each slider control corresponds to a design axis in the multiple master font. The sample text changes as you move the sliders.

6 Once you are satisfied with the new instance, click Create. The custom instance appears in the list of fonts for the multiple master font.

7 To close the Edit Multiple Master Instances window, click Done.

To remove a primary or custom instance:

1 In the Edit Multiple Master Instances window, choose the instance from the pop-up lists on the right and then click Remove. The instance is removed from ATM Deluxe and from the font file on the hard disk.

Note: *If you remove a primary instance from the font list, you can restore all primary instances by clicking Restore.*

2 To close the Edit Multiple Master Instances window, click Done.

Automatic creation of instances

When you open a document that contains a primary instance that you do not have on your system or a custom instance that you have not created, ATM Deluxe automatically creates the instance if your application supports this feature and the correct multiple master font is installed.

The instance is available globally (to all applications) until your system restarts. ATM Deluxe does not store instances that have been created automatically, except for use with the document that contains them. To store these instances permanently for global use, you must create them yourself (see “Creating and removing custom instances” on page 20).

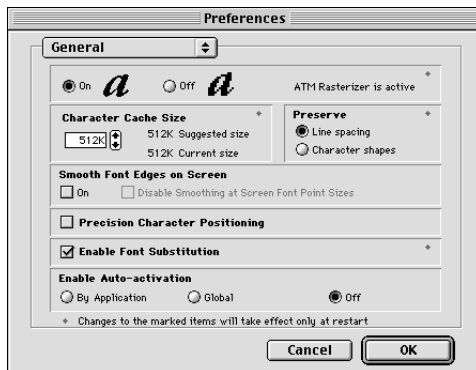
Applications vary in the way they handle automatic instances. Some add the instance names to the application Font menu, some display and print the instances correctly but do not add their names to the Font menu, and some alert you to the presence of the instances in a document so that you can create them yourself.

Chapter 3: Customizing ATM Deluxe

Adobe Type Manager Deluxe lets you select preferences to customize the handling, printing, and display of fonts for your work environment.

Display and printing

In General preferences, you specify how ATM Deluxe displays and prints fonts.



To set General preferences:

- 1 In ATM Deluxe, choose File > Preferences.
- 2 Choose General from the pop-up menu, select from the following options, and click OK.

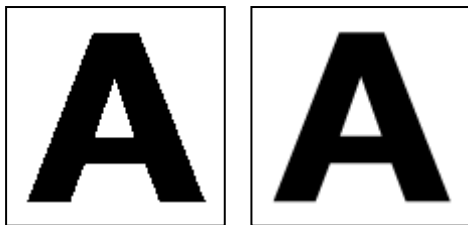
On/Off By default, ATM Deluxe is turned on when installed. If turned off, ATM Deluxe does not automatically improve font display or automatically activate inactive font files, but it can still be used to create sets and manage font files.

Character Cache Size ATM Deluxe uses a *cache*—a portion of system memory used to store font data created by ATM Deluxe. A large font cache may speed up scrolling and other screen displays of fonts, but can limit the amount of memory available to other applications. The default cache size is 512K; the suggested size varies based on other options you select, such as font substitution and precision character positioning. If you typically use many fonts on a single page, you may want to experiment with a larger cache size.

Preserve Choose the attributes that ATM Deluxe preserves when displaying or printing fonts with accents or other diacritical marks:

- **Line Spacing** keeps all spacing between lines (leading) intact. ATM Deluxe may compress uppercase letters with accents or other diacritical marks. This option is the default.
- **Character Shapes** increases the size of each character's bounding box so that it prints to non-PostScript printers in its entirety. Selecting this option may affect spacing between lines.

Smooth Font Edges On-Screen ATM Deluxe improves the appearance of Type 1 fonts on-screen by smoothing out the jagged edges inherent in video displays. To smooth edges, ATM Deluxe uses *anti-aliasing*—blending colors to provide a smoother, softer edge to Type 1 fonts on-screen.



Smoothing off and Smoothing on

Anti-aliasing for color text is available only when monitor colors are set to thousands (16-bit) or millions (24-bit). If colors are set to 256 (8-bit), then only black-and-white text can be anti-aliased.

Using this feature can slow down type-intensive displays on some systems. In that case, try increasing your font cache.

Precision Character Positioning ATM Deluxe positions characters at the subpixel level to display more accurate spacing, especially at small point sizes. Selecting this option may slow down type-intensive display on some systems. Not all applications support subpixel positioning.

Enable Font Substitution If you open a document and ATM Deluxe cannot find a required font, it uses the special multiple master fonts Adobe Sans MM and Adobe Serif MM, in combination with the ATM font database, to mimic the font. The substitute font provides the same spacing and line breaks, but may not appear the same as the required font. If this option is not selected, the application or system software may attempt to perform font substitution. For any changes you make to take effect, you must restart your computer.

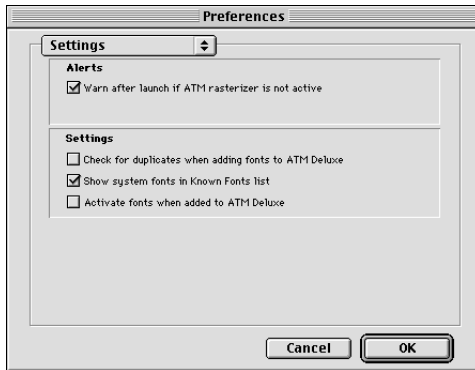
Enable Auto-Activation If you open a document that contains fonts that are currently deactivated, ATM Deluxe will temporarily activate the fonts according to the following options:

- By Application limits automatically activated fonts to the application that opened the document. The activated fonts are available until you quit the application. Some applications do not support automatic activation. See the ATM Deluxe Read Me file for information about specific applications.
- Global makes automatically activated fonts available for all applications. The activated fonts are available until the system is restarted.
- Off specifies that deactivated fonts are not automatically activated. Instead, ATM Deluxe mimics the fonts if font substitution is enabled.

Note: *Background printing automatically activates fonts even when Enable Auto-Activation is turned off in ATM Deluxe.*

ATM Deluxe settings

In Settings preferences, you can specify how fonts are listed and the type of alerts you want to receive.



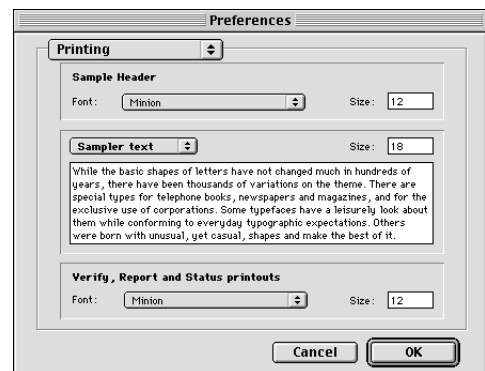
To select ATM Deluxe settings:

- 1 In ATM Deluxe, choose File > Preferences.
- 2 Choose Settings from the pop-up menu, select from the following options, and click OK:
 - Warn after Launch if ATM Rasterizer Is Not Active. If ATM Deluxe starts but the ATM Control Panel is not turned on, ATM Deluxe displays a warning.
 - Check for Duplicates when Adding Fonts to ATM Deluxe. See “Managing duplicate fonts” on page 14.
 - Show System Fonts in Known Fonts list. ATM Deluxe displays font files stored in the System Folder in the Known Fonts list. See “Listing and sorting font files” on page 16.

- Activate Fonts when Added to ATM Deluxe. Automatically activates fonts when you add them to ATM Deluxe. See “Activating and deactivating sets and fonts” on page 11.

Samples, indexes, and reports

In Printing preferences, you can choose the fonts and text ATM Deluxe uses when previewing and printing samples, indexes, and reports. For more information, see “Previewing and printing font samples” on page 15, “Printing an index” on page 16, and “Verifying fonts” on page 17.



To select fonts and text for samples, indexes, and reports:

- 1 In ATM Deluxe, choose File > Preferences.
- 2 Choose Printing from the pop-up menu, select from the following options, and click OK.

Sample Header Specify the font and size that ATM Deluxe uses when displaying information about a font in a sample.

Sample Text Customize the text ATM Deluxe uses to print a font sample or a font index:

- Alphabet Text is the text displayed just below the technical font information in a font sample.
- Sampler Text is the paragraph just below the alphabet text in a font sample.
- Fountain Text is the single line of text displayed in multiple point sizes just below the paragraph text in a font sample.
- Font Index Text is the single line of text repeated for each font in a font index.

Verify, Report, and Status Printouts Specify the font and size ATM Deluxe uses when displaying and printing verifications and reports.

Chapter 4: Using ATR Deluxe

The Adobe Type Reunion (ATR) Deluxe utility lets you control your applications' Font menus and organize fonts in the menus by font families.

About ATR Deluxe

ATR Deluxe, a utility included with roman-language versions of ATM Deluxe, lets you organize Font menus in applications. You can use ATR Deluxe to group fonts into custom categories, rename fonts in menus, display fonts in their own typefaces, and list your most recently used fonts at the top of Font menus.

You can also use ATR Deluxe with ATM Deluxe 4.6 to activate or deactivate font sets for better system performance.

Note: *ATR Deluxe works only with applications that support its features. For information on application compatibility, see “Turning ATR Deluxe on and off with applications” on page 30.*

Opening ATR Deluxe

ATR Deluxe runs in the background on your system, automatically organizing fonts in application Font menus. To set program options, you need to open the ATR Deluxe Control Panel. This control panel contains four tabbed panels.

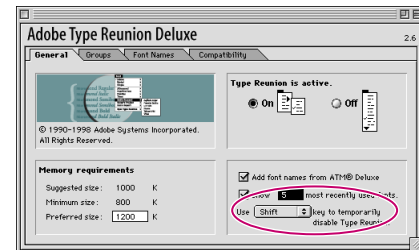
To open ATR Deluxe:

Do one of the following:

- Open the Control Panels folder in the System Folder, and double-click the Adobe Type Reunion Deluxe icon.
- Choose Apple > Control Panels > Adobe Type Reunion Deluxe.
- Choose Open Type Reunion from any application's Font menu.

Setting general options

Use the General panel to turn ATR Deluxe on or off, set the program memory size, specify whether all fonts listed with ATM Deluxe are also listed with ATR Deluxe, and specify an override key.



Choose a key to turn off ATR Deluxe temporarily.

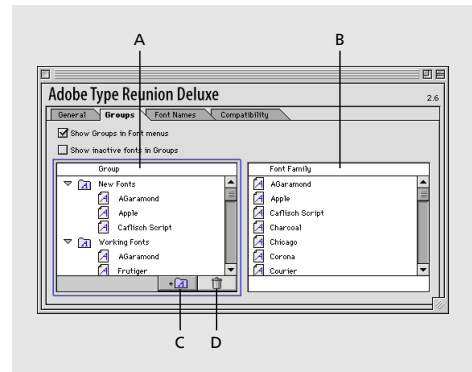
To set general options:

In the General panel, do any of the following:

- Click On or Off to turn ATR Deluxe on or off. When ATR Deluxe is on, font family names appear in your applications' Font menus, and particular styles and weights appear in submenus.
- If you need to adjust the program memory requirements, enter a new Preferred Size value.
- Select Add Font Names from ATM Deluxe to add all the fonts in the ATM Deluxe Known Fonts list to the ATR Deluxe font list. Deselect this option to have ATR Deluxe list only fonts that are already in Font menus on your system—fonts that are in the System Folder or that have been activated by ATM Deluxe or by another font management utility.
- Select Show Most Recently Used Fonts to display recently used fonts at the top of application Font menus, and specify the number of fonts to display.
- Choose from the pop-up menu a key to use to turn off Adobe Type Reunion temporarily. When opening an application or using a Font menu, hold down this key to view the application's original, unsorted Font menu.

Defining and using font groups

Use the Groups panel to define custom font groups (such as serif fonts, body fonts, or display faces) to organize your fonts into groups for easy use. A font can belong to more than one group.



A. Groups B. Families C. Add Group D. Delete Group

To define custom font groups:

In the Groups panel, do any of the following:

- To create a font group, click the Add Group button. In the Group list, select the group and type a name for it. In the Font Family list, select a font (Shift-click to select multiple fonts) and drag the font to the group.
- To display groups in the main Font menus for applications, select Show Groups in Font Menus.

- To specify that groups in Font menus include fonts made inactive by ATM Deluxe, select Show Inactive Fonts in Groups.
- To delete a font group, select it from the Group list, click the Trash button, and click OK.

To show or hide a group in a main Font menu:

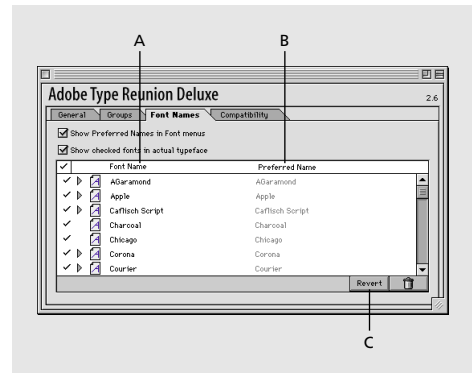
In the application, choose Font > *group name* > Show *group name* or Font > *group name* > Hide *group name*, where *group name* is the name you assigned in the Groups panel. If you choose Show *group name*, fonts in that group appear in the application's main Font menu, and all other fonts appear in a submenu. A bullet precedes the active group name in the main Font menu.

To redisplay all fonts in a main Font menu:

In the application, choose Font > *group name* > Hide Group, or choose Font > Show Active Fonts.

Naming and displaying fonts in menus

The Font Names panel lists actual font names on the left and preferred font family names on the right. You can define new preferred names and specify whether to display fonts in their actual typefaces. A check mark indicates that a font will appear in its actual typeface.



A. Actual name B. Preferred name C. Revert to original font name

To specify how font names appear in menus:

In the Font Names panel, do any of the following:

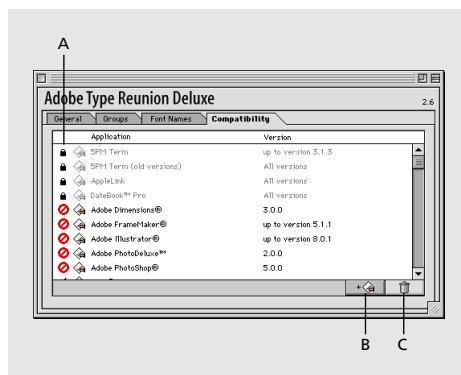
- To create a preferred name, select an actual font name on the left, click to its right in the Preferred Name list, type a name, and press Return.

- To change a preferred name back to the original font name, select the preferred name and click Revert.
- To display preferred font names in application Font menus, select Show Preferred Font Names in Font Menus.
- To show fonts in their typefaces in application Font menus, select Show Checked Fonts in Actual Typeface. Check marks appear to the left of font names.
- To prevent a font (such as a symbol font) from appearing in its own typeface when Show Checked Fonts in Actual Typeface is selected, click the check mark to hide it.
- To remove a font from the ATR Deluxe font list, select the font, click the Trash button, and click OK. (This does not remove the font from your hard disk or from the ATM Deluxe Known Fonts list.)

Turning ATR Deluxe on and off with applications

The Compatibility panel lets you turn ATR Deluxe on and off for particular applications.

Note: Applications that are incompatible with ATR Deluxe appear in the Compatibility panel with lock icons to their left.



A. On/Off column B. Adds application to list
C. Removes application from list

To specify which applications work with ATR Deluxe:

In the Compatibility panel, do the following:

- To add an application to the list, click the Add Application button and select the application.
- To turn ATR Deluxe on or off with a listed application, click to the left of the application to display a check mark (on) or a slashed circle (off).
- To remove an application from the list, select it, click the Trash button, and click OK. You cannot remove incompatible applications from the list.

Using ATR Deluxe with ATM Deluxe

If ATM Deluxe is installed on your system, commands for using it appear on Font menus of applications that use ATR Deluxe.



If you want particular fonts made inactive by ATM Deluxe to appear in application Font menus, you can use groups defined with ATR Deluxe (see “Defining and using font groups” on page 28).

To use Font menu commands for ATM Deluxe:

In the application, do the following:

- To activate or deactivate an ATM set, choose Font > ATM Sets > *set name* (where *set name* is the name of a set that you’ve created). Check marks precede active sets.

Note: *This command only works for applications that support dynamic menu updates.*

- To display the ATM Deluxe Control Panel, choose Font > ATM Sets > Open ATM Deluxe.

Chapter 5: Troubleshooting

ATM Deluxe

As you use fonts in applications, you may encounter problems with printing or display. Some common problems and possible solutions are described in the following sections. See also the ATM Deluxe Read Me file and the support information at www.adobe.com for troubleshooting tips specific to applications.

Characters appear incorrectly on-screen or when a document is printed.

Make sure of the following items:

- ATM Deluxe is installed in the Control Panels folder in the System Folder.
- You restarted your system after you installed ATM Deluxe.
- In the ATM Deluxe General preferences, the program is turned on.
- You are using a font that has been properly installed, added to ATM Deluxe, and activated.
- Your printer is set for the highest resolution in its setup dialog box.

In addition, you may be using a font, such as a display or an expert font, with an incomplete character set. Certain fonts, including some display fonts (for example, Trajan®) and expert set fonts, do not contain complete character sets. To determine which characters are included in a font, choose Key Caps from the Apple menu, or refer to the key cap chart included with your fonts.

Characters appear incorrectly on-screen but print properly on a PostScript printer.

Try the following solutions:

- Make sure the font's outline file is accessible on your hard disk. ATM Deluxe uses both the outline file and the bitmap file (contained in the suitcase) to properly render PostScript Type 1 fonts on-screen. If you choose a font size not available in the bitmap file, and the outline file is missing or has been renamed, then the font may appear jagged on-screen. In ATM Deluxe, use Tools > Verify or Tools > Report to determine if the outline file is missing.
- If the outline file is properly installed but ATM Deluxe cannot find it, try rebuilding the desktop to re-create links in the file folder.

To rebuild the desktop:

- 1 Press Shift+Option+Command as you choose Special > Restart, and continue holding down the keys as the system restarts.

2 When the Rebuilding Desktop message appears, release the keys and click OK.

- If the required outline file exists in the printer, then the font will print properly. To add the font's outline file to your hard disk, reinstall the font and then add the font to ATM Deluxe.
- If you can't obtain the font's outline file, ATM Deluxe can still attempt to mimic the font on-screen using Adobe multiple master substitution fonts. Make sure that Enable Font Substitution is selected in General preferences. For more information, see "Display and printing" on page 23.

Characters don't appear on-screen, or computer or printer performance is slow.

Increase the size of the character cache (see "Display and printing" on page 23). The default setting is 512K. For graphic arts applications, you may want to use a larger font cache.

Line and character spacing on-screen don't match the printout; character spacing is uneven.

Try the following solutions:

- Make sure Preserve Line Spacing is selected in General preferences.
- If you are using an application that provides fractional-width spacing or lets you specify its use, be sure to select the fractional-width option when printing to a PostScript printer. Applications that use only integer-width spacing may display spacing evenly on-screen, but they will print with incorrectly spaced characters.

- The document may be corrupt. Try copying the problem text, pasting it into a new document, and printing it again to see whether the fonts print correctly.

- You may have a damaged bitmap or outline file. In ATM Deluxe, select the font you suspect may be damaged and choose Tools > Report. If the font is damaged, remove and reinstall it on the hard disk. Then remove and add the font again to ATM Deluxe.

Fonts don't appear in an application Font menu.

Try the following solutions:

- In ATM Deluxe, make sure that sets containing the fonts have been added and activated. If the fonts are in suitcases that don't belong to a set, activate the individual suitcases.
- If the suitcases have been added and are active, deactivate the suitcases, then activate them again.
- Restart the application.
- Reinstall the fonts.

Duplicate fonts appear in a Font menu.

If you stored a font in more than one location and you specified that ATM Deluxe add all fonts from your system, the font in each location is added to the Known Fonts list in ATM Deluxe. To avoid font ID conflicts, you should remove the duplicate fonts (see "Managing duplicate fonts" on page 14). If you are using ATR Deluxe, drag the Type Reunion Data file from the Preferences folder in the System Folder to the Trash, and restart the computer.

A font in an inactive set or suitcase still appears in font lists and menus.

The font may be active in another set. If a font is in any active set, is in an active suitcase outside any set, or is stored in the System Folder, it will appear in font lists and menus. To see a list of active fonts, click the Fonts tab in the ATM Deluxe Control Panel and choose Active Fonts from the pop-up menu.

You can also globally deactivate the font (see “Activating and deactivating sets and fonts” on page 11).

ATM Deluxe does not attempt to mimic missing fonts.

Make sure of the following:

- Enable Font Substitution is turned on in the ATM Deluxe General preferences.
- You have installed the Adobe Sans MM and Adobe Serif MM fonts in the System Folder. These are special multiple master fonts that ATM Deluxe uses to mimic missing fonts.
- The ATM Font Database file is located in the System Folder. ATM Deluxe uses this file as a reference to mimic missing fonts.
- The font is in the ATM Deluxe Substitution database.

A virtual memory (VM) or PostScript error occurs when printing, or Courier replaces a font.

The printer may not be able to find the font’s outline file, or may not have enough memory to print downloaded fonts and graphics. Try one of the following solutions:

- Open the Chooser and turn off Background Printing.
- Reduce the number of graphics or fonts used in the document.
- If you are using a large paper size, change to letter-size paper.
- In ATM Deluxe, choose Tools > Report to determine if the font’s outline files have been installed correctly.
- Add memory to the printer.

A system error occurs on start-up, or you see this alert message: “Adobe Type Manager requires more memory or additional software resources.”

This indicates one of the following problems:

- Your system may have insufficient RAM. If so, either remove or turn off some of the current extensions, or install more RAM.

- An extension may be in conflict with ATM Deluxe. If you suspect a conflict, restart your computer without extensions, or use Extensions Manager to remove all extensions except for ATM Deluxe, and then restart your computer. If the computer restarts properly, add one extension at a time to isolate the conflict, using Extensions Manager or moving extension files into the Extensions folder within the System Folder.

To restart the computer without extensions:

Hold down the Shift key and choose Special > Restart. Continue to hold down the Shift key until you see the message “Extensions Off.”

Fonts do not display or print properly after a document is copied from a Mac OS to a Windows system.

You probably applied font styles by choosing the actual fonts, and some or all of these fonts are unavailable on the Windows system. Before copying a document from the Mac OS to the Windows platform, be sure you have applied font styles from the Style menu, not the Font menu.

ATM Deluxe has turned itself off because of an internal error.

This usually indicates a bad memory manager in system software. Try each of the following solutions:

- Restart the system.
- Make sure fonts are properly installed.
- Reinstall ATM Deluxe.

STANDARD ROMAN CHARACTER SET

Character Access Chart for Mac OS

KEY CAP	CHAR	SHIFT CHAR	OPTION CHAR	SHIFT OPTION CHAR	KEY CAP	CHAR	SHIFT CHAR	OPTION CHAR	SHIFT OPTION CHAR
A	a	A	å	Å	Y	y	Y	¥	Á
B	b	B	ı	ı	Z	z	Z	Ω	‚
C	c	C	ç	Ç	1	1	!	ı	/
D	d	D	ð	Î	2	2	@	™	¤
E	e	E		´	3	3	#	£	<
F	f	F	f	ï	4	4	\$	¢	>
G	g	G	©	”	5	5	%	∞	fi
H	h	H	·	Ó	6	6	^	§	fl
I	i	I		^	7	7	&	¶	‡
J	j	J	Δ	Ô	8	8	*	•	°
K	k	K	°	🍏	9	9	(ª	·
L	l	L	¬	Ò	0	0)	º	,
M	m	M	μ	Â	`	`	~		`
N	n	N		~	-	-	_	—	—
O	o	O	ø	Ø	=	=	+	≠	±
P	p	P	π	Π	[[{	”	”
Q	q	Q	œ	Œ]]	}	’	’
R	r	R	®	‰	\	\		«	»
S	s	S	ß	Í	;	;	:	...	Ú
T	t	T	†	˘	’	’	”	æ	Æ
U	u	U		”	,	,	<	≤	ˉ
V	v	V	√	◇	.	.	>	≥	˘
W	w	W	Σ	”	/	/	?	÷	¿
X	x	X	≈	ˆ	space bar				

STANDARD ROMAN CHARACTER SET

Accent Character Access Chart for Mac OS

CHAR	KEY SEQUENCE	NAME	CHAR	KEY SEQUENCE	NAME
Á	<i>option-e + A</i>	Aacute	Ñ	<i>option-n + N</i>	Ntilde
À	<i>option-` + A</i>	Agrave	ñ	<i>option-n + n</i>	ntilde
Â	<i>option-i + A</i>	Acircumflex	Ó	<i>option-e + O</i>	Oacute
Ä	<i>option-u+ A</i>	Adieresis	Ò	<i>option-` + O</i>	Ograve
Ã	<i>option-n + A</i>	Atilde	Ô	<i>option-i + O</i>	Ocircumflex
á	<i>option-e + a</i>	aacute	Ö	<i>option-u+ O</i>	Odieresis
à	<i>option-` + a</i>	agrade	Õ	<i>option-n + O</i>	Otilde
â	<i>option-i + a</i>	acircumflex	ó	<i>option-e + o</i>	oacute
ä	<i>option-u + a</i>	adieresis	ò	<i>option-` + o</i>	ograde
ã	<i>option-n + a</i>	atilde	ô	<i>option-i + o</i>	ocircumflex
É	<i>option-e + E</i>	Eacute	ö	<i>option-u + o</i>	odieresis
È	<i>option-` + E</i>	Egrave	õ	<i>option-n + o</i>	otilde
Ê	<i>option-i + E</i>	Ecircumflex	Ú	<i>option-e + U</i>	Uacute
Ë	<i>option-u+ E</i>	Edieresis	Ù	<i>option-` + U</i>	Ugrave
é	<i>option-e + e</i>	eacute	Û	<i>option-i + U</i>	Ucircumflex
è	<i>option-` + e</i>	egrave	Ü	<i>option-u+ U</i>	Udieresis
ê	<i>option-i + e</i>	ecircumflex	ú	<i>option-e + u</i>	uacute
ë	<i>option-u+ e</i>	edieresis	ù	<i>option-` + u</i>	ugrave
Í	<i>option-e + I</i>	Iacute	û	<i>option-i + u</i>	ucircumflex
Ì	<i>option-` + I</i>	Igrave	ü	<i>option-u+ u</i>	udieresis
Î	<i>option-i + I</i>	Icircumflex	Ÿ	<i>option-u + Y</i>	Ydieresis
Ï	<i>option-u+ I</i>	Idieresis	ÿ	<i>option-u + y</i>	ydieresis
í	<i>option-e + i</i>	iacute	^	<i>shift-option-i</i>	circumflex
ì	<i>option-` + i</i>	igrave	^	<i>shift-6</i>	asciicircum
î	<i>option-i + i</i>	icircumflex	~	<i>shift-option-n</i>	tilde
ï	<i>option-u + i</i>	idieresis	~	<i>shift-`</i>	asciitilde
´	<i>shift-option-e</i>	acute	˘	<i>shift-option-.</i>	breve
`	<i>shift-option-`</i>	grave	-	<i>shift-option-,</i>	macron
¨	<i>shift-option-u</i>	dieresis	.	<i>option-h</i>	dotaccent
ˇ	<i>shift-option-t</i>	caron	o	<i>option-k</i>	ring
¸	<i>shift-option-z</i>	cedilla	”	<i>shift-option-g</i>	hungarumlaut
¸	<i>shift-option-x</i>	ogonek			

Index

A

- activating
 - fonts 10
 - sets 8, 11
- activation symbols 10
- adding fonts
 - after installing ATM Deluxe 12
 - at installation 3
- Adobe products and services 2
- Adobe Sans MM 12
- Adobe Serif MM 12
- Adobe Type Library fonts 2
- alerts, preferences for 25
- alphabet text in samples 26
- anti-aliasing 24
- ATM Deluxe
 - installing 2
 - new features 4
 - system requirements 1
 - using with ATR Deluxe 31
- ATM font database 12
- ATR Deluxe
 - compatibility with applications 30
 - Control Panel 27
 - font naming in menus 29
 - general options 27
 - grouping fonts in menus 28
 - installing 4
 - new features 5
 - system requirements 1
 - turning on and off with applications 30

- using with ATM Deluxe 31

- automatic activation 12, 24

B

- background printing 35
- backup file of sets 9
- bitmap file 7

C

- cache, character 23, 34
- CD contents 2
- character positioning 24
- character shapes 23
- copying fonts to hard disk 17
- creating sets 8
- custom instance
 - automatic creation 21
 - creating 20
 - removing 21

D

- damaged fonts 16, 17
- deactivating sets and fonts 11
- design axis 19
- design coordinates 20
- duplicate fonts 14, 34

E

- expert set fonts 33
- exporting sets 9
- extensions conflict 35

F

- Find Font command 16
- font display in menus 29
- font index text 26
- font mapping 36
- Font menus in applications 27
- fonts
 - adding 12
 - automatic activation 12
 - automatic substitution 12, 24
 - copying to hard disk 17
 - damaged 16, 17
 - duplicates 14
 - in System Folder 10
 - listing 16
 - multiple master 19
 - not appearing in menus 34
 - printing samples of 15
 - removing 12
 - searching for 16
 - smoothing 24
 - sorting 16
 - types of 7
 - verifying 17
- fountain text 26

G

- global deactivation 35

I

- importing sets 9
- index of fonts 16
- installing
 - ATM Deluxe 2
 - ATR Deluxe 4
- instance 19
 - custom 20
 - primary 19

K

- key caps 33

L

- line spacing 23, 34
- listing fonts 16

M

- Mark as Undamaged command 18
- menus of fonts in applications 27
- multiple master fonts 19
 - automatic creation 21
 - design axes 19
 - naming conventions 20
 - removing 21
 - substitution fonts 12

N

- new features 4, 5
- New Sample Window
 - command 15
- New Set command 8

O

- online Help 4
- OpenType fonts 7
- outline file 7

P

- PostScript error 35
- preferences
 - alerts and font listings 25
 - ATM Deluxe settings 25
 - display and printing 23
 - sample text 25
- previewing fonts 15
- primary instance 19

R

- rebuilding the desktop 33
- removing
 - ATM Deluxe 3
 - duplicate fonts 14
 - fonts 12
 - fonts from sets 9
- Report command 18

S

- Sample window 15
- samples of fonts 15
- searching for fonts 16
- sets
 - activating 8, 10, 11
 - creating 8
 - deactivating 10, 11
 - description 7
 - exporting 9
 - importing 9
 - removing fonts from 9
- smoothing font edges 24
- sorting fonts 16
- starting ATM Deluxe 8
- style linking 36
- suitcases 7
- System Folder 10
- system requirements
 - ATM Deluxe 1
 - ATR Deluxe 1

V

- Verify command 18
- verifying fonts 17
- virtual memory error 35

Adobe® Type Manager® Deluxe

Version 4.6 for Mac OS

QUICK REFERENCE




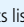
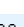
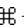
Activation Symbols

- Active set or font
- Inactive set or font
- Partially active set
- Font in System Folder (cannot be deactivated)
- Font automatically activated by application

 Command

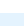
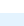
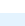

 Option

ATM Deluxe window

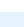
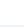
RESULT	ACTION
Switches to Sets panel	F5
Switches to Fonts panel	F6
Switches to Sets & Fonts panel	F7
Shows Known Fonts list	F9
Shows Active Fonts list	F10
Shows System Fonts list	F11
Shows Damaged Fonts list	F12
Selects first or last item in list	Home or End
Selects next item alphabetically, regardless of sort order of list	Tab
Edits name of selected set	Enter
Deactivates selected fonts within current set and Known Fonts list	Control +  + 
Deletes selection	Delete*
Deletes selection without confirmation	 + Delete*
Globally deletes selected fonts from all sets and Known Fonts list	Control +  + Delete*

**Deletes references within ATM Deluxe, but does not delete files from hard disk.*

Add Fonts dialog box

RESULT	ACTION
Displays New Set dialog box	 + N
Creates new set with name of selected folder or file and current default properties	 +  + N
Adds all fonts in selected volume or folder	 + A

Preferences dialog box

RESULT	ACTION
Switches to previous or next panel	Control +  or 

Adobe® Type Manager® Deluxe 4.6



Adobe Systems Incorporated
345 Park Avenue
San Jose, CA 95110-2704 USA
World Wide Web
www.adobe.com