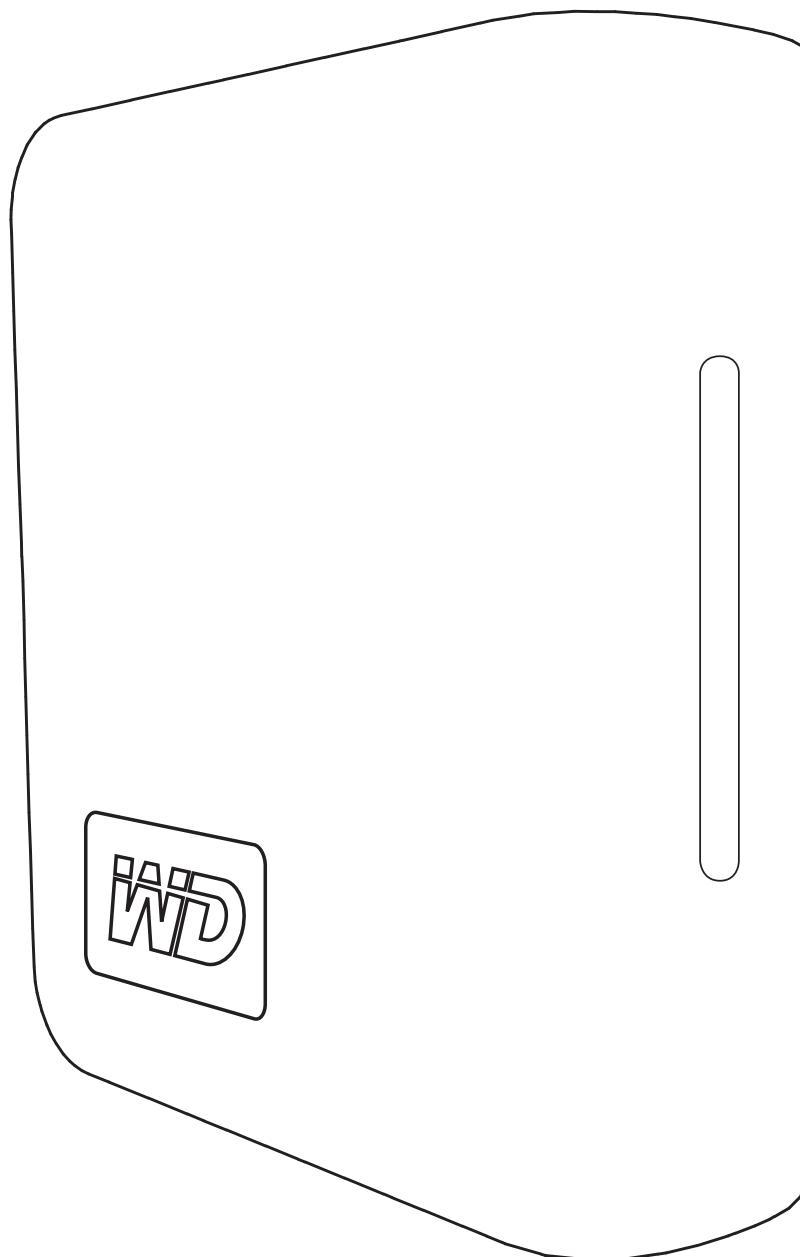


My Book™

Studio Edition™
User Manual



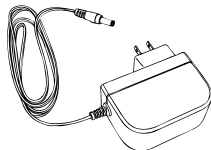
1

Getting Started

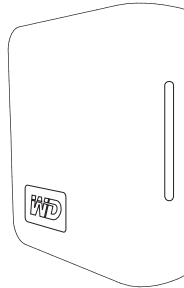
Thank you for purchasing this WD product. For the latest WD product information and news, visit our website at www.westerndigital.com.

Kit Contents

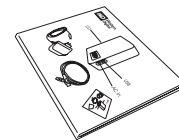
- External hard drive
- USB cable
- FireWire® 800 cable (9-pin to 9-pin)
- FireWire 800 to 400 cable (9-pin to 6-pin)
- AC adapter
- Quick Install Guide
- Backup software (Macintosh® only)



AC adapter



My Book Studio Edition



Quick Install Guide



FireWire 800 cable



USB cable



FireWire 800 to 400 cable

Optional Accessories

For more information on optional accessories for this product, visit store.westerndigital.com (U.S. only). Outside the U.S., visit support.wdc.com.

Compatibility

Macintosh

- Any of the following:
 - USB port
 - FireWire 800 or 400 port
 - eSATA port or eSATA adapter card
- Mac® OS X 10.4.8 or later

Windows®

- Any of the following:
 - USB port
 - FireWire 800 or 400 port
 - eSATA port or eSATA adapter card
- Windows 2000/XP/Vista™

Note: Compatibility may vary depending on user's hardware configuration and operating system. To use this device with Windows, you must first reconfigure it to Windows format. Search our knowledge base at support.wdc.com for answer ID # 1550 and follow the instructions as prompted.

Important: For highest performance and reliability, it is recommended that you install the latest updates and service pack (SP). Go to the **Apple** menu and select **Software Update**.

Recording Your WD Product Information

In the following table, write the serial number and model number of your new WD product found on the label on the back panel of the device. Also, write the purchase date and other notes such as your operating system and version. This information is necessary for setup and technical support.

Serial Number:
Model Number:
Purchase Date:
System and Software Notes:

Registering Your WD Product

Your WD product includes 30 days of free technical support during the applicable warranty period for your product. The 30-day period commences on the date of your first telephone contact with WD technical support. Register online at register.wdc.com.

Handling Precautions

WD products are precision instruments and must be handled with care during unpacking and installation. Drives may be damaged by rough handling, shock, or vibration. Be aware of the following precautions when unpacking and installing your external storage product:

- Do not drop or jolt the device.
- Do not move the device during activity.
- Do not use My Book as a portable device.
- To allow proper ventilation, do not block air slots located on the underside, top, or rear of the enclosure. Do not stack any objects on top of the device that may block ventilation.

2

About Your WD Drive

Drive Format

This WD device is preformatted to HFS+ (Journaled) for compatibility with Macintosh operating systems. To reformat the device to Windows, visit support.wdc.com and search our knowledge base for answer ID# 1550.

Important: Reformatting My Book erases all its contents including the preloaded software. If you have already saved files on My Book, be sure to back them up before reformatting.

LED Indicators

The power/activity LED is located on the center, front panel of the device. The LED indicators function as follows.

Power/Activity LED

Appearance	Description
Steady	Power-on state or power-save mode
Fast flashing (for approx. 3 seconds)	Transitioning to system standby
Slow flashing (every 5 seconds)	System standby
Alternating top and bottom	Drive in use

Capacity Gauge

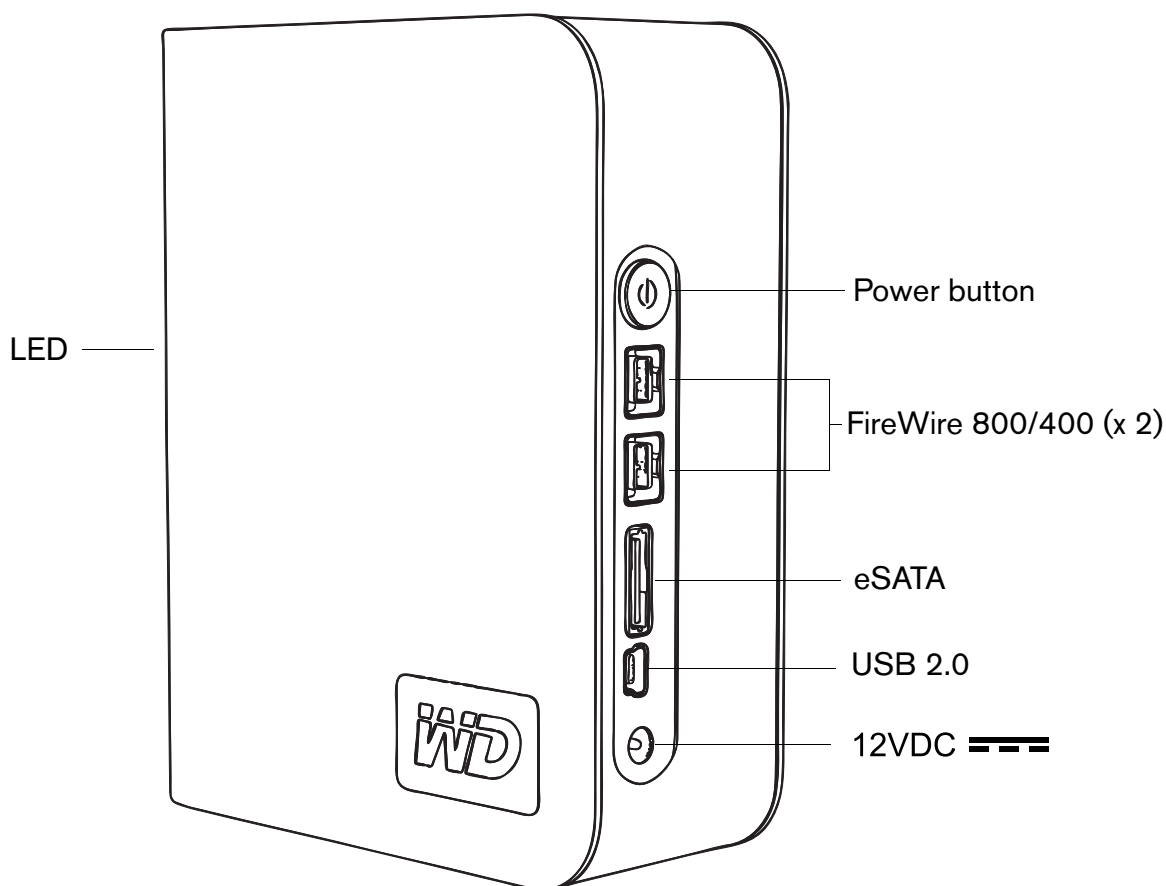
USB and FireWire Mode

The Capacity Gauge is enabled only through installation of its driver and WD Button Manager, which must be installed on each system to which My Book is connected. The Capacity Gauge is updated automatically upon drive usage.

eSATA Mode

Capacity Gauge is not available in eSATA mode.

Interfaces



FireWire 800 – This device is equipped with two FireWire 800 interfaces. FireWire 800 has a maximum data transfer rate of 800 Mb/s and is backward-compatible with FireWire 400 using a special adapter such as the FireWire 800 to 400 cable included in this kit. Connection to a FireWire 400 device transfers data at FireWire 400 speed (up to 400 Mb/s).

USB – The industry standard interface for most Windows-based computers. Hi-Speed USB (USB 2.0) supports data transfer rates up to 480 Mb/s. USB 2.0 is backward-compatible with USB 1.1. Connection to a USB 1.1 device transfers data at USB 1.1 speed (up to 1.5 Mb/s).

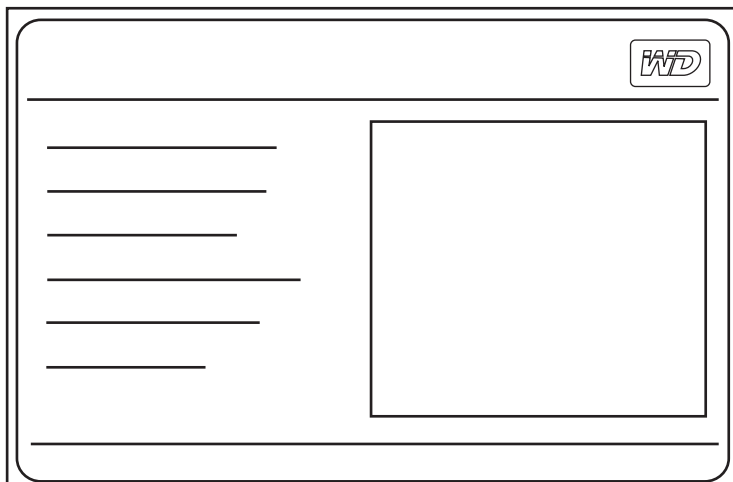
eSATA - Up to 3 Gb/s data transfers. To use this interface, an eSATA PCI card or eSATA motherboard port must be present on the host computer.

Kensington® Security Slot

For drive security, this device is equipped with a Kensington Security Slot, which supports a standard Kensington security cable (sold separately). For more information on the Kensington Security Slot and available products, visit www.kensington.com.

Software (Mac only)

The driver utilities and backup software which are preloaded on the device are compatible with Macintosh operating systems only. To install the software, follow the instructions as outlined in “Connecting the Device” on page 6.



WD Anywhere Backup™ is an easy, one-time setup, backup application that allows you to preserve your data files with around-the-clock protection. Features include multiple destination backup and simple, intuitive file recovery.

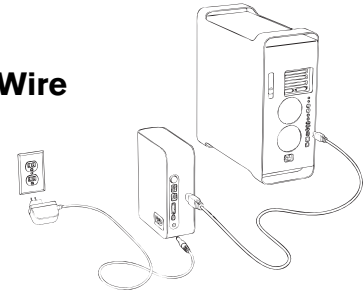
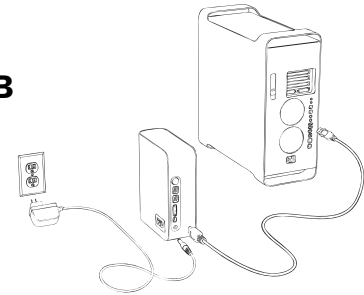
WD Button Manager is a custom WD utility for My Book which includes drivers for the capacity gauge and SmartPower™.

3

Connecting the Device

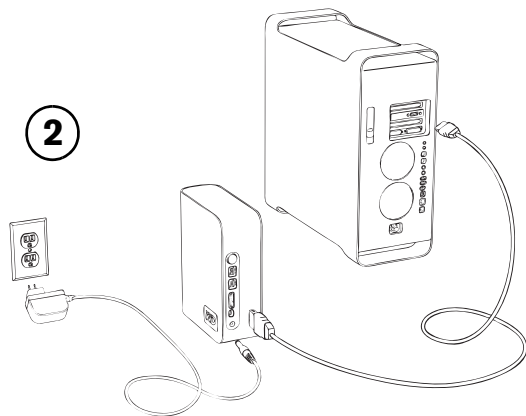
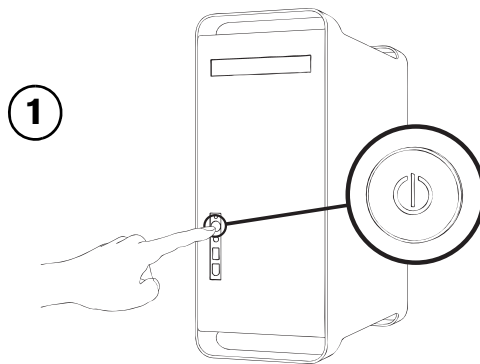
FireWire or USB

1. Turn on your computer.
2. Connect the drive's power cord and USB or FireWire cable. The drive mounts to the desktop and a My Book icon appears.
3. Double-click the My Book drive icon.
4. Double-click the WD_Mac_Tools folder. If prompted, select the language of choice from the available folders.
5. Double-click **ButtonManager.dmg** to install the device utilities.
6. Double-click **WD_Anywhere_Backup.dmg** to install the included software.

FireWire**USB****eSATA**

1. Turn off your computer.
2. Connect the AC adapter and eSATA cable (optional) as shown.
3. Turn on My Book by pressing the power button located on the back panel.
4. Turn on your computer and begin using My Book.

Note: Some eSATA controllers may require a system reboot to recognize the device.



4

Turning Off/Disconnecting the Device

SmartPower™

In USB or FireWire mode, My Book automatically powers off and on with the computer. SmartPower is not available in eSATA mode.

Important: To prevent data loss, close all active windows and applications before shutting down the drive.

You may also safely turn off the drive without powering down the computer:

Drag the My Book icon to the Trash icon for proper dismount. You may hear the drive power down as the Power LED flashes. When the Power LED is steady, you may press the Power button once or disconnect the drive's power cord to turn off the drive safely.

eSATA Mode

1. Verify that all files are saved and applications closed.
2. Shut down the computer.
3. Turn off the drive by pressing the power button located on the back panel.

Important: Shut down the computer before turning off the drive or disconnecting the eSATA cable. Pressing the power button to turn off the drive when connected via eSATA may cause data corruption.

Note: Safe Shutdown and SmartPower are not available in eSATA mode.

5

Troubleshooting

If you have problems when installing or using this product, refer to this troubleshooting section or visit our support Web site at support.wdc.com and search our knowledge base for more help.

How to	Answer ID
■ format the drive to Mac OS format	287
■ install, partition, and format the drive in Windows XP	207
■ install, partition, and format the drive in Windows 2000	34
■ obtain and reinstall the original software included on My Book	1425
■ format the drive to the FAT32 file system	1364
■ use the drive on a Macintosh and a PC simultaneously	291

Frequently Asked Questions — Installation

Q: *Why does the drive not power up?*

A: Be sure the drive is plugged in to a power source.

Q: *Why is the drive not recognized under My Computer or on the computer desktop?*

A: If your system has a USB 2.0 PCI adapter card, be sure that its drivers are installed before connecting your WD USB 2.0 external storage product. The drive is not recognized correctly unless USB 2.0 root hub and host controller drivers are installed. Contact the adapter card manufacturer for installation procedures.

Q: *How do I partition and reformat the drive for Windows?*

A: For recommended formats for this device, search our knowledge base for answer ID 207 at support.wdc.com.

Q: *Why is the data transfer rate slow?*

A: Your system may be operating at USB 1.1 speeds due to an incorrect driver installation of the USB 2.0 adapter card or a system that does not support USB 2.0.

If your system includes a PCI slot, you can achieve Hi-Speed USB transfer rates by installing a USB 2.0 PCI adapter card. Contact the card manufacturer for installation procedures and more information.

Note: If an additional external drive is connected to the WD product, USB bandwidth is shared and may affect performance.

6

Appendix

Regulatory Compliance**FCC Class B Information**

This device has been tested and found to comply with the limits of a Class B digital device, pursuant to Part 15 of the FCC Rules. These limits are designed to provide reasonable protection against harmful interference in a residential installation. This unit generates, uses, and can radiate radio frequency energy and, if not installed and used in accordance with the instructions, may cause harmful interference to radio or television reception. However, there is no guarantee that interference will not occur in a particular installation. Any changes or modifications not expressly approved by WD could void the user's authority to operate this equipment.

The following booklet, prepared by the Federal Communications Commission, may be helpful: *How to Identify and Resolve Radio/TV Interference Problems*. This booklet is Stock No. 004-000-00345-4 available from the US Government Printing Office, Washington, DC 20402.

CSA Notice

Cet appareil numérique de la classe B est conforme à la norme NMB-003 du Canada.

This Class B digital apparatus complies with Canadian ICES-003.

Underwriters Laboratories Inc.

Approved for US and Canada. CAN/CSA-C22.2 No. 60950-1, UL 60950-1. Information Technology Equipment - Safety - Part 1: General Requirements (File E101559).

This product is intended to be supplied by a listed limited power source, double insulated, or direct plug-in power unit marked "NEC" or "Class 2."

CE Compliance For Europe

Verified to comply with EN55022 for RF Emissions and EN50082-1 for Generic Immunity, as applicable.

Warranty Information**Obtaining Service**

WD values your business and always attempts to provide you the very best of service. If this Product requires maintenance, either contact the dealer from whom you originally purchased the Product or visit our product support Web site at support.wdc.com for information on how to obtain service or a Return Material Authorization (RMA). If it is determined that the Product may be defective, you will be given an RMA number and instructions for Product return. An unauthorized return (i.e., one for which an RMA number has not been issued) will be returned to you at your expense. Authorized returns must be shipped in an approved shipping container, prepaid and insured, to the address provided on your return paperwork. Your original box and packaging materials should be kept for storing or shipping your WD product. To conclusively establish the period of warranty, check the warranty expiration (serial number required) via support.wdc.com. WD shall have no liability for lost data regardless of the cause, recovery of lost data, or data contained in any Product placed in its possession.

Limited Warranty

WD warrants that the Product, in the course of its normal use, will be free from defects in material and workmanship for a period of five (5) years, unless otherwise required by law, and will conform to WD's specification therefor. This limited warranty period shall commence on the purchase date appearing on your purchase receipt. WD shall have no liability for any Product returned if WD determines that the Product was stolen from WD or that the asserted defect a) is not present, b) cannot reasonably be rectified because of damage occurring before WD receives the Product, or c) is attributable to misuse, improper installation, alteration (including removing or obliterating labels and opening or removing external enclosures, unless the product is on the list of limited user-serviceable products and the specific alteration is within the scope of the applicable instructions, as found at support.wdc.com), accident or mishandling while in the possession of someone other than WD. Subject to the limitations specified above, your sole and exclusive warranty shall be, during the period of warranty specified above and at WD's option, the repair or replacement of the Product. The foregoing warranty of WD shall extend to repaired or replaced Products for the balance of the applicable period of the original warranty or ninety (90) days from the date of shipment of a repaired or replaced Product, whichever is longer.

The foregoing limited warranty is WD's sole warranty and is applicable only to products sold as new. The remedies provided herein are in lieu of a) any and all other remedies and warranties, whether expressed, implied or statutory, including but not limited to, any implied warranty of merchantability or fitness for a particular purpose, and b) any and all obligations and liabilities of WD for damages including, but not limited to accidental, consequential, or special damages, or any financial loss, lost profits or expenses, or lost data arising out of or in connection with the purchase, use, or performance of the Product, even if WD has been advised of the possibility of such damages. In the United States, some states do not allow exclusion or limitations of incidental or consequential damages, so the limitations above may not apply to you. This warranty gives you specific legal rights, and you may also have other rights which vary from state to state.

Technical Support Services

If you need additional information or help during installation or normal use of this product, visit our product support website at support.wdc.com and search our knowledge base.

When contacting WD for support, have your WD product serial number, system hardware, and system software versions available.

support.wdc.com
www.westerndigital.com

800.ASK.4WDC North America
949.672.7199 Spanish
+800.6008.6008 Asia Pacific
+31.20.4467651 EMEA

Western Digital
20511 Lake Forest Drive
Lake Forest, California 92630 U.S.A.

Information furnished by WD is believed to be accurate and reliable; however, no responsibility is assumed by WD for its use nor for any infringement of patents or other rights of third parties which may result from its use. No license is granted by implication or otherwise under any patent or patent rights of WD. WD reserves the right to change specifications at any time without notice.

Western Digital, WD, and the WD logo are registered trademarks; and My Book, Studio Edition, and SmartPower are trademarks of Western Digital Technologies, Inc. Other marks may be mentioned herein that belong to other companies.

© 2007 Western Digital Technologies, Inc. All rights reserved.

4779-705002-A00 Aug 2007