

UNREAL® TOURNAMENT 2004 © 2004 Epic Games Inc. Unreal and the Unreal logo are registered trademarks of Epic Games Inc. All Rights Reserved. All other trademarks and trade names are the property of their respective owners. Unreal Tournament 2004 was created by Epic Games Inc. and Digital Extremes. Macintosh version manufactured and marketed by Destineer, Inc. under license from Atari. Destineer and MacSoft are registered trademarks of Destineer, Inc. All rights reserved.



P/N 10309-2

MacSoft

ATARI



MacSoft



Unreal TOURNAMENT

2004
FOR MACINTOSH



ATARI

7F6AY-D9YPB-A6WTE-EJCUZ



TABLE OF CONTENTS

First Things First	1
The Release Notes File	1
System Requirements	1
Setup and Installation	2
Keyboard Commands	2
Combat Modes	4
Single-Player Game	7
Multiplayer Game	9
Settings Menu	12
Saving and Loading	17
Heads-Up Display	18
Text Messaging	19
Voice Chat	19
Voice Command	23
Team Commands and Taunts	23
Internet Chat	24
Mutators	24
Weapons	25
Other Items	28
Vehicles	31
Turrets	40
Game Tips	42
UT2004 Global Stats	43
Credits	48
<i>Unreal Tournament® 2004</i> Web Site	51
Technical Support	51
End-User License Agreement	53
DivX Networks, Inc. End-User License Agreement	55



FIRST THINGS FIRST

The Release Notes File

The *Unreal Tournament® 2004* game has a Release Notes file where you can view both the License Agreement and updated information about the game. We strongly encourage you to read this file in order to benefit from changes made after this manual went to print.

To view this file, double-click on the *Unreal Tournament 2004* DVD icon on your desktop, and then on the Release Notes file.

System Requirements

Operating System: Macintosh OS X v10.2.8 or higher

Processor: Macintosh G4 933MHz or faster (1GHz or faster recommended)

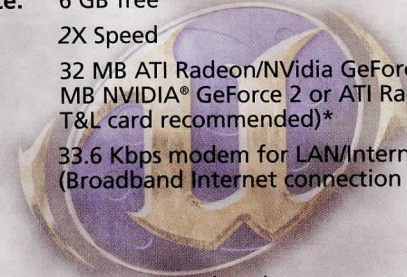
Memory: 256 MB RAM minimum

Hard Disk Space: 6 GB free

DVD Drive: 2X Speed

Video: 32 MB ATI Radeon/NVidia GeForce 2 or higher (64 MB NVIDIA® GeForce 2 or ATI Radeon Hardware T&L card recommended)*

Modem: 33.6 Kbps modem for LAN/Internet play (Broadband Internet connection recommended)



Note: If you are playing on a Mac that does not meet the minimum specified requirements, you may find many parts of UT04 still playable. We have found several game types to be playable on 800MHz processors. We suggest that you try playing online, without bots. Most maps are quite playable under this scenario. If you wish to play without going online, try some of the 1 on 1 Deathmatch levels such as DM-Idoma or, DM-Desolation. These can be found under "Instant Action" in the Main Menu.

Don't forget that there are a number of things you can do to improve performance on low-end machines. If you are experiencing slow performance, go to Settings, and reduce detail levels, change resolutions, etc. Experiment until you find the settings that work best for you.

SETUP AND INSTALLATION

1. Insert the *Unreal Tournament 2004* DVD into your DVD drive.
2. If the DVD window does not open automatically, double-click on the *Unreal Tournament 2004 Disc* icon on your desktop.
3. Double-click on the *Install Unreal Tournament 2004* icon.
4. You will be required to key in your Unreal Tournament registration code number. This number can be found on the inside front cover of the product manual. Do not share your registration code with others. Multiple uses of the same registration code are not allowed.
5. Once installation is complete, double-click on the Unreal Tournament 2004 icon located on your hard drive to play.

Note: You must have the *Unreal Tournament 2004* DVD in your DVD drive to play.

KEYBOARD COMMANDS

Below is a list of the default controls. To change any of these, go to the Input menu (under Settings), then select Configure Controls. Click the box next to the function you want to change, then press the key you want to assign to it.

MOVEMENT	CONTROL
Fire	Left Mouse Button
Alternate Fire	Right Mouse Button or Command
Move Forward	Up Arrow (or W)
Move Backward	Down Arrow (or S)
Strafe Left	Left Arrow (or A)
Strafe Right	Right Arrow (or D)
Jump/Up	Spacebar
Crouch/Down	C
Look Up	Delete
Look Down	Page Down
Center View	End

HINTS	CONTROL
Show Path to Red Base	M
Show Path to Blue Base	N
SPEECH	CONTROL
Activate Microphone	F
COMMUNICATION	CONTROL
Say	T
Team Say	R
Show Speech Menu	V
TAUNTS	CONTROL
Point	semicolon (;)
Pelvic Thrust	J
Ass Smack	K
Throat Cut	L
WEAPONS	CONTROL
Next Weapon	Mousewheel Down or Number Pad Plus (+)
Previous Weapon	Mousewheel Up or Number Pad Minus (-)
Switch to Last Weapon	B
Switch to Best Weapon	G
HUD DETAIL	CONTROL
Shrink HUD	Minus (-)
Grow HUD	Equals (=)
MISCELLANEOUS	CONTROL
Use	E
Pause	P
Screenshot	F9
Menu	Esc
Scoreboard	F1
In-game Chat	F2
Personal Stats	F3
Show Playlist	F11
Toggle Radar Map	F12

COMBAT MODES

There are 10 modes of combat in *Unreal Tournament 2004*.

Deathmatch

Players are pitted against each other in a balls-to-the-wall free-for-all. Anything goes. The one with the most kills wins.

Team Deathmatch

Join your teammates in the quest for battlefield supremacy. The team that kills the most enemy players is judged the winner.

Capture the Flag

Each level has two team flags. In order to score, one team must penetrate the opposing team's defenses, "Capture the Flag," and return it to their home team's flag. If the flag carrier is killed, the flag drops to the ground for anyone to pick up. If your team's flag is taken, it must be returned before your team can capture the opposing team's flag.

Double Domination

Each level has two Domination Points. In order to score, you must capture both Domination Points (by running over them) and keep them in your team's possession for 10 seconds. After scoring, the Domination Points reset to neutral and will become available to Dominate again after another 10 seconds.

Bombing Run

Each level has one ball in the middle of the map. The objective is to pick up the ball, deliver it to the enemy base and fire it through their goal. You must also defend your own goal to prevent the enemy from scoring. The ball is dropped when a player is killed and can then be picked up by anyone on either team.

Last Man Standing

All players start the game with all weapons when they respawn, but players have a limited number of lives. There's an option to get health back when you kill someone. Also, if you stand in one place for too long, you get called out for camping and your location shows up on everyone else's HUD.

Invasion

Band together and defend your position against waves of incoming enemies. Each wave lasts between 90 seconds and four minutes. You cannot respawn if you die during a wave. However, as long as one player makes it to the end of the wave alive, everyone respawns for the next attack. Monster difficulty is controlled by the bot difficulty option in the Settings Menu.

Mutant

A Mutant game starts out as a free-for-all deathmatch. However, as soon as one player makes a kill, he becomes the Mutant. Everyone else stops fighting (you can't hurt each other anymore), and guns for the Mutant instead. You score points by racking up kills while you're the Mutant:

Normal Kill: 2 Points

Double Kill: 3 Points

Multi Kill (and above): 4 Points

Mutants get all (non-super) weapons, lots of ammo, and have invisibility, agility and berserk. However, the Mutant's health slowly runs down and can only be replenished by killing other players. Also, the Mutant's position appears on everyone else's HUD. If a player kills the Mutant, they become the new Mutant.

As an optional twist, the player with the lowest score is the Bottom Feeder — he can also go kill other players to score points. As soon as the Bottom Feeder's score isn't the lowest, a new player becomes the Bottom Feeder. The Mutant gets five points for killing the Bottom Feeder.

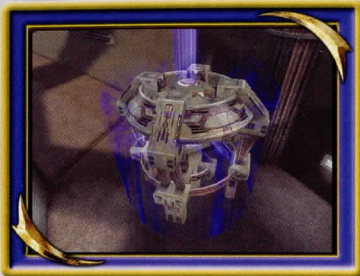
Assault

Two teams (attackers and defenders) battle each other in the Unreal universe. Attackers must accomplish several objectives in order to win the round. Defenders must prevent the attackers from achieving those objectives in order to win. Teams can exchange roles after each round. You can set the number of rounds in a match, and the time limit for each round.

Accomplishing objectives for the attacking team may involve reaching a key location, using machinery or computers in the level, or destroying a critical piece of hardware. The Show Path to Blue/Red Base hotkeys (default: M/N) will indicate where the next objective is during a match. Assault also features many useable vehicles and turrets.

Onslaught

We saved the best for last. Teams battle for control of the expansive map. You'll need strategy, strength and an almighty arsenal to win. Each team starts the game with its own vehicles. You can't steal an enemy vehicle unless the enemy unlocks it by first getting into the vehicle. But if your enemy leaves his tank to pick up some ammo, you can steal it.



Power Core

Your team's goal in Onslaught is to destroy the enemy Power Core. Usually found in the heart of your opponent's base, the Power Core cannot be damaged unless your team has a link to it. Your team must link to the enemy Power Core by controlling the smaller Power Nodes on the map.

Power Links

The Power Links that connect the nodes and cores are very important. Each team can only attack or take control of Power Nodes connected to nodes already under team control. Teams start out at their base and take over node after node until they can establish a link to the enemy Power Core and attack it.



Neutral Power Nodes

Either team can take over neutral Power Nodes they have a link to by standing on the base of the node. Once a node is taken over, construction of a team-colored Power Node begins. The Power Node becomes active once construction ends.



Active Power Nodes

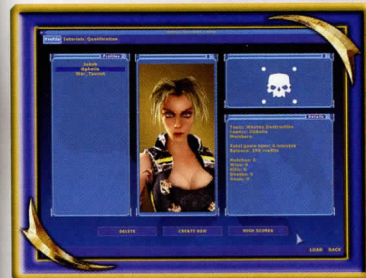
Active Power Nodes function as mini-bases. If your team controls the node, you can get new vehicles, weapons, ammo and respawn. Once a Power Node is constructed for your team, it immediately spawns vehicles and players can respawn there.

Attacking Power Nodes

If your team has a link to an enemy-controlled Power Node, you can attack the node and destroy it. This will return the node to a neutral state and eliminate spawning of enemy players at that node. You can then start the construction of a Power Node for your team. During construction, the node is vulnerable to enemy attack, so defend the node as if your life depended on it.

SINGLE-PLAYER GAME

Select Single Player from the Main Menu to enter the Tournament and begin your trip up the Tournament ladders. This is the single player section of *Unreal Tournament 2004* and is played solely on your computer, not the Internet.



Profile

On the Profile screen you can create a new character and team, browse existing profiles, continue an in-progress season and check recorded high scores.

Select **CREATE NEW** from the Profile Screen to start a new career in the Tournament. Here you'll be able to name your team and team captain, select a difficulty level,

choose a symbol to represent your team, and pick the appearance of you character in-game from a wide selection of tough customers.

Select the **HIGH SCORES** button to view the top teams that have competed in the Tournament. By selecting **LOAD** you'll continue where the currently selected profiles team left off.

Tutorials

You can get an overview of four different game modes on the Tutorials screen. Here you can choose which orientation movie to view: Deathmatch, Capture the Flag, Double Domination and Bombing Run.

Qualification

This screen covers your first matches in the tournament. Here you compete through five deathmatches, each increasingly more challenging. The sixth round has you hand pick potential teammates, and then attempt to prove your worth as a team captain by defeating them all. If you're victorious, they'll join you and you move onto the next qualifier.

You have some control over which map you play for each of these matches. Should you feel that the odds are stacked against you on the default map, select **CHANGE ARENA** to see if the alternative is an improvement. It'll cost you, and you've only got one new choice, but it can sometimes make the difference between victory and defeat.

Team Qualification

Similar to the Qualification screen, here you and your team slug it out across four arenas in team deathmatch. Like with the Qualification ladder, you can change the arena if you wish.

Team Roster

Prior to entering an arena in all non-Qualification matches, you can setup your crew. On the Team Roster screen, choose which teammates to bring and what tactics they should employ.



of comparable skill on the Ladder screen to matches solely for fun and profit. There are two challenge types, each with their own risks and rewards. Bloodrites allow you recruit players away from an opposing team (assuming victory of course). Mano-e-Mano allows you to wager cash on who will win a one-on-one deathmatch.



their skill percentages, weapon preferences, and historical details.

As your team works its way through the Tournament, it is inevitable that some will sustain injuries. If your cash reserves prevented you from tending to their wounds after the match, you can address their health by selecting from the two medical options on the Team Management screen. Select a specific teammate to heal and choose Treat Injuries, or just click on Treat All to take care of all teammates at once.

Ladder

After completing the Team Qualification matches, it's time to start working your team up the Tournament Ladder. On this screen you can select from four game mode ladders, starting with Double Domination. After a two victories within each game mode ladder, the next ladder will be come available.

You may challenge opposing teams

Team Management

At any time between matches you can adjust the composition and condition of your team. On the Team Management screen you can hire and fire teammates as you see fit (and your balance sheet supports). New free agents become available as you work your way up the ladder, so be sure to revisit the talent pool from time to time. Select a free agent to see information about them, such as

Details

On many of the Tournament screens you can select Details to get additional information about your own performance, as well as how your competitors are doing. The Last Match Played tab will show you the stats of both your team and your opponent, how long the match lasted, and what the prize was. The Other Tournament Matches tab will show you the results of the other contender matches that took place during your match. The last tab, Opponent Teams, shows details about your opponents, including history, roster, and stats. If you want to view your stats outside of *Unreal Tournament 2004*, select the **EXPORT** button to create an HTML file with this information.

Instant Action

In Instant Action games, you choose any type of combat on any of the available maps. You'll see the various combat modes listed, and the names of the arenas available for each. Use the menus to change Player settings and Game Rules and choose which Mutators to activate. (See "Mutators" on page 24 for details.)

Customizing Bots

Before starting an Instant Action game, you can customize both the bots on your team and those on the enemy team. Select "Use Bot Roster" for the Bot Mode setting in the Game Rules tab, and then select which bots to use under the Bot Config tab. Each bot can be individually customized by clicking on the Customize button for the selected bot.

MULTIPLAYER GAME

Simple Server Administration System

The simple administration system is enabled by default. In the simple administration system there is only one server administrator password. This can be set in the "Server Rules" menu. To use Match Setup, players must know the administrator password. This password gives the user full admin control of the server. Instead, you may want to enable the advanced server administration system.

Multiplayer Match Setup

In multiplayer games you have the option to allow certain players to modify the server settings remotely. This becomes necessary when two clans want to battle each other. This feature is disabled by default. To enable it, check the "Allow Match Setup" setting in the "Server Rules" tab of the "Host Game" menu.

Advanced Server Administration System

To enable the advanced server administration system:

1. Stop/Exit *Unreal Tournament 2004*.
2. Edit the \user\Library\Application Support\UT2004\UT2004.ini file with a text editor.
3. Find the section that starts with "[Engine.GameInfo]".
4. Below this find the line that contains "AccessControlClass=Engine.AccessControl".
5. Change this to line to "AccessControlClass=XAdmin.AccessControlINI".
6. Find the section that starts with "[UWeb.WebServer]".
7. Below this find the line that contains "bEnabled=False".
8. Change this line to "bEnabled=True".
9. Save the changes.

Match Setup User Accounts

With the advanced server administration system enabled, you can now add user accounts for Match Setup. To create Match Setup user accounts, do the following:

1. Set the "AdminPassword" to a password of your choice.
2. Start an *Unreal Tournament 2004* server.
3. Open your favorite Internet web browser.
4. Navigate the web browser to <http://yourserver.domain.ext/ServerAdmin> where yourserver.domain.ext is the Internet address of your server. You could also use the IP Address in place of this. If the *UT2004* server is on the same computer then you can use <http://localhost/ServerAdmin>.
5. You will be prompted for a UserID, Password and Domain. Enter "admin" for the UserID and the AdminPassword (set previously in the "Server Rules") for the Password. Leave the Domain blank.
6. This takes you the *Unreal Tournament 2004* web administration page.
7. Click the "Users & Admin" link at the top.
8. Click the "Add Users" link to the left.
9. Enter a UserID and Password for the new user.
10. At the bottom (you may have to scroll down) select "Match Setup" in the Initial Group list. **Note:** This will allow this user to use Match Setup and nothing else. He/she will only be able to view and modify configuration setting that have a security level of 240 or lower.

(The security levels are shown beside each setting in the "defaults" section of the UT Server Admin web page.)

11. Click the "Add Admin" button.
12. Now this user can use Match Setup.

Using Match Setup

Follow the steps below to use the Match Setup interface while connected to a multiplayer server.

1. Press the **Esc** key and click the "Match Setup" button.
2. Enter your Match Setup UserID and Password.
3. It will take a few seconds to download all of the settings from the server.
4. You can select server settings in the list on the left by clicking the item. The items that have a "+" preceding them may be clicked to show sub settings under them.
5. Once you select a setting, the value for that setting will show on the right. You may change the setting here.
6. After making a change, click the "Save" button. This will send the new value to the server and to any other MatchSetup users for notification.
7. After you're finished modifying settings, you need to click the "Accept" button to implement the changes on the server. If there are any other MatchSetup users logged in, they will also have to click the "Accept" button to implement the changes.

Default Profile

The server administrator may save a set of settings (called a profile) as the default profile. To do this, the administrator must open the Match Setup interface, login with an Admin level UserID, modify the settings, then click the "Save Default" button. Any Match Setup user can load this Default Profile by clicking the "Load Default" button on the Match Setup interface.

Multiplayer Voting

In multiplayer games, you can vote for maps and to kick other players from the server.

Map Voting

To enable map voting on a server, check the "Enable Map Voting" option in the "Server Rules" tab of the "Host Game" menu. This is disabled by default. At the end of each game, the map voting interface appears on each player's screen. Each player can to choose a game type (combat mode) and a map. Double-click the map name to submit a choice. The interface also shows a list of maps that have been voted on, along with chat messages from other players. Players can send messages from this interface also.

Kick Voting

Check the "Enable Kick Voting" option in the "Server Rules" tab of the "Host Game" menu to enable the removal of players from the server. This option is only available if Advanced Options is checked. This is disabled by default. At any time during a game, players can open the Kick Voting interface by pressing the **Esc** key and clicking the "Kick Voting" button. The player can then submit a choice by double-clicking one from the list of players. The interface also shows a list of players that have been voted against. Players can send and receive messages from this interface. By default, if more than 51% of the players vote against a single player, that player is kicked from the server and will not be able to rejoin until the current map is over.

SETTINGS MENU

Display

Configure the look of the game here.

Render Device: Alternate rendering devices. May offer better performance on your machine.

Resolution: Select the video resolution at which you wish to play.

Color Depth: Select the maximum number of colors to display at one time.

Full Screen: Check this box to run the game full-screen.

Brightness: Use the slider to adjust the Brightness to suit your monitor.

Gamma: Use the slider to adjust the Gamma to suit your monitor.

Contrast: Use the slider to adjust the Contrast to suit your monitor.

Texture Detail: Changes how much world detail will be rendered.

Character Detail: Changes how much character detail will be rendered.

World Detail: Changes the level of detail use for optional geometry and effects.

Physics Detail: Changes the physics simulation level of detail.

Dynamic Mesh LOD: Adjusts how aggressive character and vehicle details are reduced at distance.

Decal Stay: Changes how long weapon scarring effects stay around.

Character Shadows: Enables character shadows.

Decals: Enables weapon scarring effects.

Dynamic Lighting: Enables dynamic lights.



Detail Textures: Enable high-resolution detail textures.

Coronas: Enables coronas.

Trilinear Filtering: Enable Trilinear filtering, recommended for high-performance Macs.

Projectors: Enables Projectors.

Foliage: Enables grass and other decorative foliage.

Weather Effects: Enable weather effects like raindrops and lightning.

Fog Distance: Relative scaling of distance fog. Higher values increase performance.

Audio

Modify the game's sound configuration here.

Music Volume: Adjust the volume of the background music.

Audio Mode: Changes the audio system mode.

Low Sound Detail: Lowers quality of sound.

System Driver: Use system installed OpenAL driver.

Reverse Stereo: Reverse the left and right audio channels.

Effects Volume: adjusts the volume of all in-game sound effects.

Play Voices: Defines the types of voice messages to play.

Mature Taunts: Enables off-color commentary.

Auto-Taunt: Enables your in-game player to automatically taunt opponents.

Message Beep: Enables a beep when received a text message from other players.

Announcer Volume: Adjusts the volume of all in-game voice messages.

Announcements: Adjusts the amount of in-game announcements.

Status Announcer: The Status announcer relays important information about the game to the tournament players and spectators.

Reward Announcer: Each tournament player is linked to a Reward announcer that informs you when you've demonstrated exceptional combat skills.

Text to Speech Volume: Adjusts the volume of Text to Speech messages.

Text to Speech: Enables Text to Speech message processing.

IRC Text to Speech: Enables Text to Speech processing in the IRC client (only messages from active tab is processed).

Voice Chat: Enable the voice chat system during online matches.

Voice Options: Permits the customization of voice-related features.

Voice Chat Volume: Adjusts the volume of other players' voice chat communication.

Auto-join Public Channel: Automatically join the Public channel upon connecting to a server.

Auto-join Local Channel: Automatically join the Local channel upon connecting to a server.

Auto-join Team Channel: Automatically join the Team channel upon connecting to a server.

Auto-select Active Channel: Automatically set an active channel when you join.

Chat Password: Set a password on your personal chat room to limit who is allowed to join.

Internet Quality: Determines the codec used to transmit voice chat to and from Internet servers.

LAN Quality: Determines the codec used to transmit voice chat to and from LAN servers.

Player

Here is where you modify how your opponents perceive your character.

Name: Changes the alias you play as.

Voice Type: Choose how your character's voice will sound in the game.

Default FOV: This value will change your field of view while playing.

Preferred Team: Changes the team you will play on by default.

Weapon Hand: Change how your weapon is displayed.

Small Weapons: Makes your first-person weapon smaller.

Skin Preview: Show how the model looks using the selected skin.

Portrait: Toggle between 3D view and a portrait of your character.

Change Character: Changes the character you play as.

Game

Here you can customize visual elements of the game.

Weapon Bob: Prevent your weapon from bobbing up and down while moving.

Gore Level: Configure the amount of blood and gore you see while playing the game.

Dodging: Turn this option OFF to disable special dodge moves.

Auto Aim: Enabling this option will activate computer-assisted aiming in single-player games.

High Beacon Trajectory: Enable to use traditional-style high translocation beacon toss trajectory.

Weapon Switch on Pickup: Automatically change weapons when you pick up a better one.

Landing Viewshake: Enable view shaking upon landing.

Connection: How fast is your connection?

Dynamic Netspeed: Dynamically adjust your netspeed on slower connections.

Track Stats: Enables this option to join the online ranking system.

Stats UserName: The selected name to use for UT Stats.

Stats Password: The selected password that will secure your UT Stats.

View Stats: Click to launch the UT stats website.

Speech Recognition: Enables speech recognition.

Preload all player skins: Preloads all player skins, increasing level load time but reducing hitches during network games. You must have at least 512 MB of system memory to use this option.

Input

Here you can adjust input device options and configurations.

Configure Controls: Assign keys to different game functions like movement, weapons and taunts. For example, you can reassign the "Next Weapon" function to your mousewheel, as well as general mouse functions. Click on the box next to the function you want to change, then press the key you want to assign to that function.

Speech Binder : Set the controls to play phrases within the game.

Auto Slope: When enabled, your view will automatically pitch up/down when on a slope.

Invert Mouse: When enabled, the Y-axis of your mouse will be inverted.

Mouse Smoothing: Enable this option to automatically smooth out movements in your mouse.

Reduce Mouse Lag: Enable this option will reduce the amount of lag in your mouse.

Enable Joystick: Enable this option to enable joystick support.

Mouse Sensitivity (Game): Adjust mouse sensitivity.

Mouse Sensitivity (Menus): Adjust mouse speed within the menus.

Mouse Smoothing Strength: Adjust the amount of smoothing that is applied to mouse movements.

Mouse Accel. Threshold: Adjust to determine the amount of acceleration.

Dodge Double-Click Time: Determine how fast you must double-tap the movement keys to dodge.

Weapons

Adjust settings that influence your interaction with weapons.

Weapon Priority: Select the weapon auto-switch order.

Custom Weapon Crosshairs: Enable this option to use weapon-specific crosshairs.

Crosshair: Select the style of crosshair you will be using.

Red: Change the color of your crosshair.

Green: Change the color of your crosshair.

Blue: Change the color of your crosshair.

Opacity: Changes how transparent your crosshair is.

Crosshair Scale: Changes the crosshair scale.

Swap Fire Mode: Check this box to swap the firing mode on the selected weapon.

HUD

Here you can adjust the appearance and information displayed on your HUD.

Hide HUD: Check to hide the HUD when playing.

Show Enemy Names: Display enemies' names above their heads.

Weapon Bar: Select whether the weapons bar should appear on the HUD.

Show Weapon Info: Show current weapon ammunition status.

Show Personal Info: Display health and armor on the HUD.

Show Score: Check to show scores on the HUD.

Show Portraits: Display player portraits when receiving a chat messages.

Show VoIP Portraits: Display player portraits when voice chat messages are received.

No Console Death Messages: Turn off reporting of death messages in console.

Max. Chat Count: Number of lines of chat to display at once.

Chat Font Size: Adjust the size of the chat messages.

Message Font Offset: Adjust the size of game messages.

HUD Scaling: Adjust the size of the HUD.

HUD Opacity: Adjust the transparency of the HUD.

Custom HUD Color: Use configured HUD color instead of team colors.

Red: Adjust the amount of red in HUD when Custom HUD Color enabled.

Green: Adjust the amount of green in HUD when Custom HUD Color enabled.

Blue: Adjust the amount of blue in HUD when Custom HUD Color enabled.

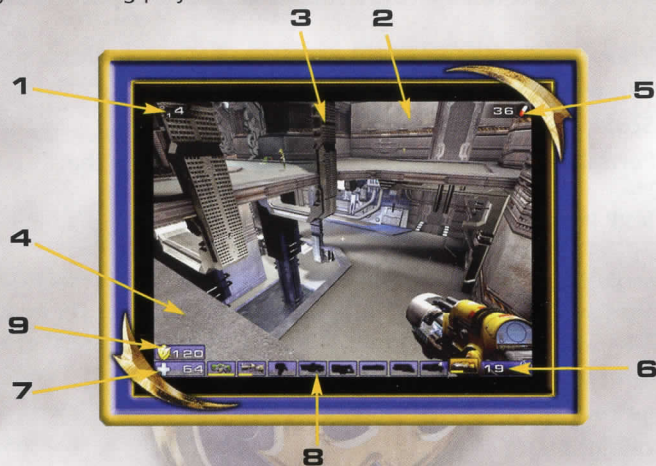
Configure: Opens the custom HUD configuration menu for the specified gametype.

SAVING AND LOADING

Unreal Tournament 2004 uses a profile system to save and load game data. Prior to starting or loading a single-player game you are asked to select a profile or create a new one. This is so that data (game progression and options) can be saved to the correct profile. Once you create a profile (pick your character, choose a team, enter your name), that profile is stored. Any matches won are automatically saved.

HEADS-UP DISPLAY

During the game, a variety of on-screen indicators, status meters, icons and messages will keep you abreast of important information and situations. Together, these informational aids comprise your Heads-Up Display (HUD). Keep an eye on your HUD to stay in touch with the small details that may end up saving your life. Remember, an aware player is a living player.



1. Rank/Spread

The first Rank number indicates your position in the current competition; the second number tells you how many players are participating. The Spread is how many places behind the leader you currently are, or (if you're in first place) how many frags ahead of second place you are.

2. Team Score

Shows how your team is performing.

3. Game Messages

Displays important game info (ball/flag status, kills, etc.).

4. Message Window

Messages from your enemies and teammates will appear here.

5. Adrenaline

Shows how much adrenaline you have.

6. Ammo Indicator

This icon shows how much ammo the active weapon contains.

7. Health Level

This number indicates how much health you have.

8. Weapon Selection

These icons display the currently selected weapons as well as ammo counts.

9. Armor Level

Indicates how much armor you have.

TEXT MESSAGING

Unreal Tournament 2004 supports in game text messaging through the "say" (default T key) and the "teamsay" (default R key) commands. The "say" command broadcasts your comments to everyone in the game while the "teamsay" command sends them only to teammates. *Unreal Tournament 2004* also supports several text messaging % macro commands that can be used to detail information about yourself. They are:

%A	Displays the current Adrenaline amount
%S	Displays the current Shield strength
%H	Displays the current Health amount
%W	Displays the current weapon
%L	Attempts to display a location for using game objectives and inventory
%%	Displays a % symbol

For example, "I'm %L holding the %W with %H and %A" might display "I'm near the Red Flag holding the Rocket Launcher with 100 Health and 50 Adrenaline".

VOICE CHAT Overview

Voice chat allows you to communicate with other players during a match by speaking into a microphone connected to your sound card. Other players with voice chat enabled can hear your transmissions and respond. Voice chat greatly enhances team play and coordination in *UT2004* games by making it much easier to communicate. By communicating directly to your teammates ("There's an enemy ambush waiting just outside our door on the left side!"), you can give more specific information to others than was possible in previous *Unreal* games.

Voice chat is managed on the server via channels. All players that are members of a voice chat channel can hear any voice chat transmissions sent through that channel. You can join (and receive voice communications from) as many voice chat channels as you'd like, but you may only transmit to one channel at a time. In order to transmit to a particular channel, you must be a member of that channel.

Each *UT2004* game contains a several standard voice chat channels:

Public — All players on the server may join and transmit.

Local — All players on the server may join and transmit to this channel. The local channel is a new concept in voice chat technology.

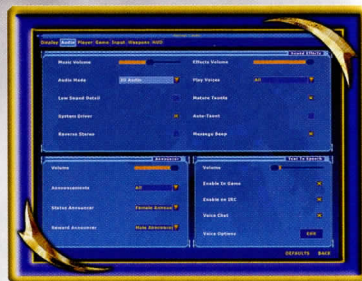
Any transmissions sent to this channel will be “broadcasted” from your player's location in the current match. All players within range of your player's location in the map can hear your transmission. The further away another player is from you, the lower your voice will sound. Local broadcasts are fully supported by 3D audio systems, meaning you are able to discern from which direction a player's voice came.

Team — Only hear transmissions from your teammates. This is a cascading channel, meaning that any communication sent to this channel will also be heard in the Offense and Defense channels.

In addition to the standard channels on every *UT2004* server, a personal chatroom is created when you join the server. Other players may join your personal chat room to speak in private. To prevent unauthorized persons from joining your personal chat channel, you have the option of protecting your personal chat channel with a password. You can set the password in the Voice Chat configuration page of the Settings menu.

Enabling Voice Chat

Voice chat is disabled by default. To use voice chat online, you must first enable it. Voice chat is enabled in the Voice Chat settings menu. To access the Voice Chat settings menu, start *UT2004*, click the “Settings” menu, then select the “Audio” tab. Check the “Voice Chat” checkbox to enable voice chat during online games.



Configuration

Client Options

Voice Chat Auto Join — Choose which public channels you would like to join upon connecting to a server.

Chat Password — You may set a password on your personal chat channel. Only players that know your password may join your personal channel.

Server Options

Enable Local Channel — Configure whether the “Local” channel will be enabled on the server.

Enable Voice Chat — This setting determines whether the server will permit players to use voice chat in game.

Usage

Basic Commands

Basic voice chat commands are performed using the Voice Chat sub-menu in the Speech Menu (see the Speech Menu section for instructions on how to use this menu). Bring up the Speech Menu by either pressing the Speech Menu quickbind key (by default the **V** key) or by entering the Speech Menu command at the Game Console. Channel names drawn in white indicate channels of which you are a member. Channel names drawn in gray indicate channels of which you are not a member. Channel names drawn in green indicate your active channel. Your Active Channel is the channel to which you are currently sending your voice chat transmissions. A list of channel members will be drawn to the right of the menu for whichever voice chat channel is highlighted by the selection indicator.

The Voice Chat menu contains three options:

- **Join** — Selecting this option presents a list of voice chat channels that exist on the server to which you are connected. This list will only contain channels of which you are not a member. Select the channel you'd like to join. The Speech Menu is closed, and you are added as a member to the selected channel. You will begin receiving voice communication on this channel.
- **Leave** — Selecting this option presents a list of voice chat channels that exist on the server to which you are connected. This list will only contain channels of which you are a member. Select the channel you'd like to leave. The Speech Menu is closed, and you are removed as a member to the selected channel. You will no longer receive voice communication from this channel.
- **Talk** — Selecting this option presents a list of voice chat channels that exist on the server to which you are connected. This list will contain all channels on the server that you are allowed to join.

Only players who are members of your Active Channel will hear your voice chat transmissions.

If you already have an Active Channel, selecting a different channel from the "Talk" menu will change your Active Channel to that channel. If you are not a member of that channel, you will automatically be added as a member.

Selecting the same channel as your current Active Channel will make that channel no longer your Active Channel, and will not assign any other channel as your new Active Channel. When you don't have an Active Channel, other players on the server will not be able to hear any of your voice transmissions.

Advanced Voice Chat Commands

Banning

You may ban other players from your personal chat channel. When you ban another player, they are immediately removed from your personal chat channel, if they are currently a member, and are unable to re-join. You also have the option to no longer hear their voice transmissions in any other channels of which you are member (this feature can be enabled from the Voice Chat configuration page, in the Settings menu). Banning a player is global, which means that even if you are playing on a different server, the ban against that player would remain in effect, and that player would be unable to join your personal chat room on the different server.

Password

You may password protect your personal chat channel. This limits who can join your personal chat room to only those to whom you give your password.

HUD Indicators

While you are making a voice transmission, a small meter will appear on the left side of your screen to indicate the volume at which you are transmitting. The higher the meter goes, the louder your voice. Use this meter to determine whether your voice transmission is too low or too high.

When you hear another player's voice chat transmission, a portrait of that player's character, along with the player's name, will appear on the left side of your screen for a few seconds to indicate which player is speaking (this option can be configured from the HUD configuration page of the "Settings" menu).

Tips & Tricks

Console Commands

The following is a list of voice chat related console commands. These can be entered at the Game Console.

Join <channel name> — Receive any voice transmissions sent to this channel.

Leave <channel name> — Stop receiving any voice comm sent to this channel.

Speak <channel name> — Toggles whether to transmit to this channel.

SetChatPassword <new password> — Set, change, or clear your personal channel's chat password.

BanPlayer <player name> — Ban another player (see section titled "Banning" under Advanced Voice Chat Commands).

UnBanPlayer <player name> — UnBan another player (see section titled "Banning" under Advanced Voice Chat Commands).

While a player is logged in as admin, their voice is transmitted to all players.

After a map change, you will automatically re-join whichever channels you were a member of during the last map.

TEAM COMMANDS AND TAUNTS

While you're playing the game, you can select from a menu of messages that you can say during the game. Press the V key while playing to open the Voice menu, then click on a category. When you see the message you wish to say, click on it to broadcast it. Note that different characters have different taunts available to them.

The following is a list of the categories and their respective messages:

Acknowledgements

Got it!	Got your back.
Roger!	I'm hit!
On my way!	Under attack!

Friendly Fire

Hey! Same team!	Voice Taunts
On your team!	Eat that!
	You like that?
	Sucker!

Orders

Attack.	Boom!
Cover me.	You suck!
Defend.	Die, bitch!
Freelance.	Man down!
Hold this position	Loser!

Other Messages

Base is uncovered.	Animated Taunts
Get our flag!	Point
Got the flag.	Pelvic Thrust
	Ass Smack

INTERNET CHAT

An Internet chat function has been provided to allow *UT2004* players to set up matches or have online discussions. This feature uses the Internet Relay Chat (IRC) protocol.

Chat Messages: MacSoft does not monitor, control, endorse, or accept responsibility for the content of chat messages. You are strongly encouraged not to give out identity or other personal information through chat message transmissions. Kids, check with your parent or guardian if you are concerned about any chat you receive.

MUTATORS

You can customize any game using Mutators. To use a Mutator in a multiplayer game or Instant Action game, click on the Mutators tab, and move the Mutators you wish to use to the list box on the right.



WEAPONS

Assault Rifle

Inexpensive and easily produced, the AR770 provides a lightweight 5.56mm combat solution that is most effective against unarmored foes. With low-to-moderate armor penetration capabilities, this rifle is best suited to a role as a light support weapon. The optional M355 Grenade Launcher provides the punch that makes this weapon effective against heavily armored enemies.



Flak Cannon

Trident Defensive Technologies Series 7 Flechette Cannon has been taken to the next step in evolution with the production of the Mk3 "Negotiator." The ionized flechettes are capable of delivering second- and third-degree burns to organic tissue and cauterizing the wound instantly. Payload delivery is achieved via one of two methods: ionized flechettes launched in a spread pattern directly from the barrel; or via fragmentation grenades that explode on impact, radiating flechettes in all directions.



Lightning Gun

The Lightning Gun is a high-power energy rifle capable of ablating even the heaviest carapace armor. Acquisition of a target at long range requires a steady hand, but the anti-jitter effect of the optical system reduces the weapon's learning curve significantly. Once the target has been acquired, the operator depresses the trigger, painting a proton 'patch' on the target. Milliseconds later the rifle emits a high voltage arc of electricity, which seeks out the charge differential and annihilates the target.



Sniper Rifle

This high-muzzle velocity sniper rifle with a 10x scope is a lethal weapon at any range, especially if you can land a headshot.



Minigun

The Schultz-Metzger T23-A 23mm rotary cannon is capable of firing both high-velocity caseless ammunition and cased rounds. With an unloaded weight of only 8 kilograms, the T23 is portable and maneuverable, easily worn across the back when employing the optional carrying strap. The T23-A is the rotary cannon of choice for the discerning soldier.



Rocket Launcher

The Trident Tri-barrel Rocket Launcher is extremely popular among competitors who enjoy more bang for their buck. The rotating rear-loading barrel design allows for both single- and multi-warhead launches, letting you place up to three dumbfire rockets on target. The warheads are designed to deliver maximum concussive force to the target and surrounding area upon detonation.



Shieldgun

The Kempfler DD280 Riot Control Device has the ability to resist and reflect incoming projectiles and energy beams. The plasma wave inflicts massive damage, rupturing tissue, pulverizing organs and flooding the bloodstream with dangerous gas bubbles. This weapon may be intended for combat at close range, but when wielded properly should be considered as dangerous as any other armament in your arsenal.



Shock Rifle

The ASMD Shock Rifle has changed little since its incorporation into the Tournaments. The ASMD sports two firing modes capable of acting in concert to neutralize opponents in a devastating shockwave. This combination attack is achieved when the weapon operator utilizes the secondary fire mode to deliver a charge of seeded plasma to the target. Once the slow-moving plasma charge is within range of the target, the weapon operator may fire the photon beam into the plasma core, releasing the explosive energy of the anti-photons contained within the plasma's EM field.



Ion Painter

The Ion Painter seems innocuous enough at first glance, emitting a harmless low-power laser beam when the primary firing mode is engaged. Several seconds later, a multi-gigawatt orbital ion cannon fires on the target, neutralizing any combatants in the vicinity. The Ion Painter is a remote targeting device used to orient and fire the VAPOR Ion Cannon. The Ion Painter offers increased targeting accuracy via its telescopic sight, easily activated by the secondary fire mode of the weapon. Once the Ion Painter has been used to designate a target, it is highly recommended that the user put considerable distance between themselves and the weapon's area of effect.



Ion Cannon

The highly effective Variable Altitude Phased Output Remote Weapons Platform (VAPOR WeP) led to a dramatic decrease in incidents of mob violence within colonial boundaries. Hovering high above the terrain, the VAPOR scans the visible countryside for the activation of rifle-mounted targeting lasers. When a beam is located, the platform moves into position and unleashes two terawatts of ionized plasma streams directly onto the target, vaporizing any agitators and bystanders within 50 meters.



Mine Layer

Deriving technology from Izanagi Corporation's Micro-spy military line, the minelayer is a deadly combination of cutting-edge high explosives, A.I., and robotics. Carrying thermite encased within its fragmenting Duranium shell these drones will sit quietly until a vehicle is within range, then charge and detonate on contact. If an on-foot enemy is within range, the mines will chase them down and leap onto them, detonating. Alt-fire activates a guidance laser from the Minelayer itself, causing all launched drones to flock toward the painted point. Although each clip can only hold four drones, the minelayer is deadly for both infantry and vehicles alike.



AVRIL

Designed to be used strictly against vehicles, the Avril allows infantry a fighting chance. Once the Avril has acquired lock, it fires a solid-fuel missile which will track the target as long as the reticle is held on the vehicle. The missile tracks its intended target when fired, able to pull 4 G's and 2 ninety degree turns in 100 feet. Alt-fire allows the player view to hold and zoom on the locked target. Armed only milliseconds before impact, the missile explodes on contact, delivering the full force of a shaped PolyDiChlorite charge into the delivery point. slow to recharge, the Avril must be used with caution, but can turn the tide in a pitched battle.



Biorifle

The GES BioRifle continues to be one of the most controversial weapons in the Tournament. Loved by some, loathed by others, the BioRifle has long been the subject of debate over its usefulness. Some Tournament purists argue that the delayed detonation of the mutagenic sludge, coupled with the ability to quickly carpet an area with the highly toxic substance, has reduced the weapon to the equivalent of a minefield, a barbaric and cowardly weapon employed during past human conflicts. Proponents of the weapon argue that it enhances the tactical capabilities of defensive combatants, allowing participants to cover multiple choke points more efficiently. Despite the debate, the weapon remains historically accurate, providing rapid-fire wide-area coverage in primary firing mode, and a single-fire variable payload secondary firing mode. In layman's terms, this equates to being able to pepper an area with small globs of Biosludge, or launch one large glob at the target.



Link Gun

Riordan Dynamic Weapon Systems combines the best of weapon design in the Advanced Plasma Rifle v23, commonly known as the Link Gun, or simply the Link. While the primary firing mode of the Link remains the same as its plasma-firing predecessor, the secondary cutting torch has been replaced with an active-scanning, switchable energy matrix. This matrix enables the weapon to register friend or foe upon contact with the swirling green beam and change properties accordingly. When the beam comes into contact with an opponent it can inflict serious injury and death within seconds. Upon contacting a teammate, it reverts to a harmless carrier stream. The carrier stream offloads energy from the onboard cells, boosting the output of any targeted player who is also using the Link. Two players may Link to one another at any time, boosting the power output of the weapon significantly, but it should be noted that while players are boosting a teammate, they are unable to defend themselves from attack.



Target Painter

Emitting a solid state laser for the Phoenix Bomber to target, the single-shot Target Painter allows the autonomous dropping of a massive payload of conventional ordnance on a general area. After holding and locking the targeting beam on a specified ground point, the Phoenix will call in and commence surface bombardment.



Grenade Launcher

Easily one of the most diverse weapons in current use, the Grenade Launcher can fire up to eight grenades at a time, either seeding an entire area for later detonation, or directly targeting enemies. Lined with electrostatic emitters, each grenade adheres to both enemy vehicles and infantry, the detonation of which lies completely in the hands of the weapon holder. When employed with creativity and timing, the Grenade Launcher can be a very powerful weapon.



Translocator

The Translocator was originally designed by Liandri Corporation's R&D sector to facilitate the rapid recall of miners during tunnel collapses and other emergencies. The technology has saved countless lives, but not without cost. Rapid deresolution and reconstitution of the subject organism can have several unwelcome effects, including increases in aggression and paranoia, as well as increased probabilities of respiratory and cardiac arrest. Artifacts of synaptic disruption accumulate in the biological snapshot of the individual, leading to Teleportation Related Dementia (TReDs), an incurable disease that has stricken some of our greatest champions. In order to prolong the careers of today's contenders, limits have been placed on Translocator use in the lower-ranked leagues. This was deemed necessary to prevent new recruits from becoming too reliant on the device, thereby sealing their own doom. The latest iteration of the Translocator features a remotely operated camera, exceptionally useful when scouting out areas of contention. It should be noted that while viewing the camera's surveillance output, the user is effectively blind to his immediate surroundings.



Redeemer

The first time you witness this miniature nuclear device in action, you'll agree it is the most powerful weapon in the Tournament. Launch a slow-moving but utterly devastating missile with the primary fire; but make sure you're out of the Redeemer's impressive blast radius before it impacts. The secondary fire allows you to guide the nuke yourself with a rocket's-eye view. Keep in mind, however, that you are vulnerable to attack when steering the Redeemer's projectile. Due to the extreme bulkiness of its ammo, the Redeemer is exhausted after a single shot.



OTHER ITEMS

Health

Each health vial gives you five health points, up to a maximum of 199.



Health Pack

Replenishes 25 health points, up to a maximum of 100.

Keg O' Health

A new lease on life, for 100 health points.

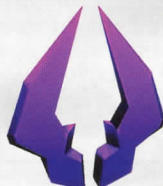


Shield Pack

Protects you with 50 armor points.

Super Shield Pack

Gives you 100 armor points, up to a maximum of 150.



Double Damage

Doubles the power of all weapons. The Double Damage effects last for 30 seconds.

Adrenaline

Tasty and nutritious, Adrenaline provides you with the extra energy needed to execute special Adrenaline abilities.



VEHICLES

In an Onslaught game vehicles spawn at bases and active Power Nodes. When a vehicle spawns for the first time it is locked, and enemy players are unable to control it. Once a vehicle is used for the first time, the vehicle is unlocked and can be hijacked by the enemy team if left unattended. Enter a vehicle by pressing the Use key when next to it. Press the Use key to flip an upside-down vehicle. All vehicles have a driver position and some vehicles can carry passengers that can fire the vehicle-mounted weapons. If a vehicle is destroyed, all passengers and the driver will also be killed unless they exit beforehand. It is also possible for the driver and passengers to be killed by incoming fire even before the vehicle has been destroyed.

Additionally there are new vehicle based reward voices:

Roadkill: Run an opponent over with a vehicle.

Pancake: Crush an opponent under the Manta.

There are many, many, more for the player discover.

Goliath

Recently replaced by a newer model, the Goliath tank served as a front-line offensive weapon for two decades. Protected by a double-plate carbon-durium shell, the Goliath lacks top speed, but makes up for it with endurance and brute force. Four synchronized stabilizers let the turret rotate independently from the chassis, allowing the tracking of enemies at medium and long-range. The Goliath's main cannon delivers a massive 140mm depleted-uranium round at over a mile a second. A second teammate can enter the tank and provide cover fire with the dual .50-caliber machine guns. Working in tandem, these weapons offer provide a strong defense against both air and ground attacks.



Goliath Driver Controls

Mouse: Aim

Forward / Backward: Accelerate / Reverse

Strafe Left / Strafe Right: Steering

Fire: Fire main cannon

Alt-Fire: Zoom

Goliath Machine Gunner Controls

Mouse: Aim

Fire: Fire Minigun

Alt-Fire: Zoom

Hellbender

The Hellbender offers strong maneuverability, heavy armor and powerful weaponry. Both neutron-induction-powered weapons on the Hellbender deliver a considerable punch. The rear turret sports dual 40-megawatt plasma projectors, which despite their slower reload rate inflict considerable damage to enemy vehicles. The side turret fires EMP quanta projectiles, similar to the ASMD shock rifle. You can detonate these highly unstable spheroids with a properly placed secondary-fire. It is not uncommon to see a group of dismounted enemies devastated by this spectacular weapon, and it should be approached with caution.

Hellbender Driver Controls

Mouse: Camera

Forward / Backward: Accelerate / Reverse

Strafe Left / Strafe Right: Steering

Jump: Handbrake turn

Fire: Horn

Alt-Fire: Horn

Hellbender Rear Turret Controls

Mouse: Aim

Fire: Fire Turret (Hold button to charge)

Alt-Fire: Zoom

Hellbender Side Turret Controls

Mouse: Aim

Fire: Launch EMP Projectile

Alt-Fire: Detonate EMP Projectiles



Manta

Lightweight and diminutive, the Manta is a fearsome sight in battle. Created for marsh and swamp warfare, the Manta has proven itself over all types of terrain. The Manta combines a small overall target area and superior ground-speed to bring a lethal mix of strengths to the battlefield. Constructed almost exclusively from laminated Alumex polymer, the Manta's agility is unmatched by any other craft. The Manta floats on a cushion of air provided by twin Magneto-impelled props. The tri-blades can be instantly pitched, allowing the pilot to leap two stories into the air to avoid enemies or obstacles. The Manta brings its two multi-stage plasma casters very quickly to enemy territory. Manta pilots must be wary of enemy fire, and outright attacks against heavier vehicles in close quarters rarely succeed.

Manta Controls

Mouse: Steering

Forward / Backward: Accelerate / Reverse

Strafe Left / Strafe Right: Strafe

Jump: Ascend

Crouch: Descend

Fire: Fire Plasma Caster

Alt-Fire: Slam



Scorpion

Offering little in the way of armor, the Scorpion is effective against infantry and as a light, fast combat support vehicle. A rear-attached plasma ribbon emitter fires a string of plasma cores bound together by cohesive magnetic force. These cores wrap around enemies or vehicles and detonate. The Scorpion is fitted with twin sling arms embedded with three industrial-grade steel shears with zero-G forged edges only an atom's width in thickness. The sling arms snap out on command and effortlessly cleave through any body armor with ease, leaving perfectly severed heads and torsos in its wake. Being so small and lightly armored, the Scorpion is vulnerable to most other vehicles, and heavy infantry fire.

Scorpion Controls

Mouse: Aim

Forward / Backward: Accelerate / Reverse

Strafe Left / Strafe Right: Steering

Jump: Handbrake turn

Fire: Hold to charge, Release to fire ribbon projectile

Alt-Fire: Hold to deploy blades



Raptor

The Raptor maintains a stranglehold on combat air superiority.

Constructed of tritanium-ceramic alloys, the air-frame allows fast response and high durability. A grid array of magneto-conducting cells covers its wings, powered by dual phase-induction plasma turbines. The grid array vectors gravity away from whichever direction the pilot chooses, allowing the Raptor to accelerate. Armed with two solid-state plasma projectors and a homing missile mount, the Raptor can decimate specific targets very quickly, although Raptor pilots must be cautious of guided rockets or Stationary Turret attacks from the ground.

Raptor Controls

Mouse: Steering

Forward / Backward: Accelerate / Reverse

Strafe Left / Strafe Right: Strafe

Jump: Ascend

Crouch: Descend

Fire: Fire Plasma Projector

Alt-Fire: Fire Homing Missile (Locks on to Mantas and Raptors only)



Leviathan

Originally designed for urban pacification, the Leviathan found its greatest deployment near the end of the Human/Skaarj wars. The Leviathan represents the ultimate in mobile military force projection, able to carry one driver and four passengers. Each passenger mans an anti-vehicular turret at the corners. The pilot can target enemies with the rear-mounted rocket pack while driving, firing a continuous swarm of projectiles. When the pilot needs to hold a position, the main weapon can be deployed. This will immobilize the Leviathan for stabilization. Powered by two quantum-fusion impulse reactors, the main gun projectile creates a negative singularity at the point of impact, drawing all energy and matter out of the immediate area. Exploding outward with devastating force, the shockwave can annihilate everything within its radius. There are documented cases of Leviathans single-handedly leveling entire cities, and lone attacks against a fully manned Leviathan are suicide.

Leviathan Driver Controls

Mouse: Aim

Forward / Backward: Accelerate / Brake / Reverse

Strafe Left / Strafe Right: Steering

Fire (Undeployed): Fire Rockets

Fire (Deployed): Fire main weapon

Alt-Fire: Deploy / Undeploy

Leviathan Turret Controls

Mouse: Aim

Fire: Fire Turret

Alt-Fire: Zoom



Phoenix

As an autonomous remote-bombing device, the Phoenix is capable of delivering staggering amounts of ordnance to a specific target. Hold the Target Painter beam on an object or ground point until it signals target lock. An immediate airstrike follows with the Phoenix releasing its payload directly, if indiscriminately. Held aloft by four pulse-ramdrive engines, and plated in Duranium armor, the heavily armored Phoenix is ponderous, but effective in combat. The Phoenix makes its presence felt on the battlefield briefly, although a vigilant Raptor pilot or Stationary Turret gunner has been known to take them down.



Human Spacefighter

In service for over half-century, the Human Spacefighters (known as "Eagles") were the main choice for military interception, sabotage and infiltration missions.

Although outdated, the Eagle is very reliable. The Tournament uses exact replicas of the Eagle used during the Human / Skaarj war a century ago.

Armed with two laser projectors and a homing missile mount, they can take down any type of light- or medium-armored targets. The powerful single barrel engine provides a strong acceleration to escape enemy fire, as well as a slow velocity "approach" mode. Along with dual strafing controllers, the Eagles are extremely aggressive in space.

Human Space Fighter Controls

Mouse: Steering

Forward / Backwards: Accelerate / Decelerate

Strafe Left / Strafe Right: Strafe

Jump + Strafe Left / Right: Roll

Crouch: Reset roll (stabilizer)

Previous / Next Weapon: Target cycle

Use: Reset target and switch on Automatic Targeting (closest visible enemy)

Fire: Instant hit lasers

Alt-Fire: Homing Missile



Skaarj Spacefighter

Few details are available on these rarely seen Spacefighters, as they appeared and disappeared during the final battle against the Skaarj that ended the Seven-Day Siege over a century ago. Military Intelligence suspects the Skaarj had stolen a new source of energy to power these state of the art crafts

(codenamed "Black Scorpions"). Light weight and armored, the "Black Scorpions" are armed with a dual plasma projectors and homing missile mount. The adaptive wing flaps and engine exhaust system provide the Black Scorpions with a great top speed, aggressive acceleration and high movement range. Exact replicas, as found during the Human/Skaarj war, are used in the Tournament.

Skaarj Space Fighter Controls

Mouse: Steering

Forward / Backwards: Accelerate / Decelerate

Strafe Left / Strafe Right: Strafe

Jump + Strafe Left / Right: Roll

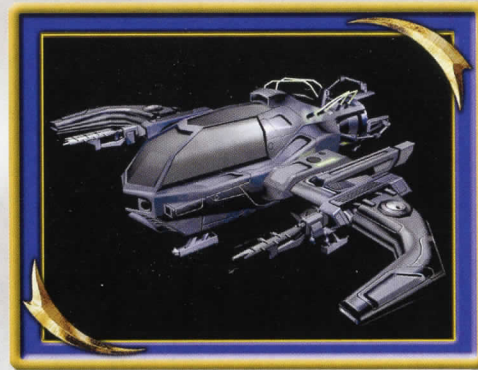
Crouch: Reset roll (stabilizer)

Previous / Next Weapon: Target cycle

Use: Reset target and switch on Automatic Targeting (closest visible enemy)

Fire: Instant hit lasers

Alt-Fire: Homing Missile



TURRETS

Minigun Turret

Very noisy and polluting, the Minigun Turret is no longer in production but still widely used and maintained. The high-power turbine gives the turret a high RPM rate and great range. The turret's weakest points are its very low accuracy and effectiveness at close range.

Controls

Use: Enter / Exit

Fire: Fire

Alt-Fire: Zoom

F4: Switch between first-person view and third-person view.

Mothership Turret

Main stationary defenses on the outside of the Skaarj Mothership. It's primary fire features two high-velocity plasma projectiles, and a high-energy shield alt-fire.

Controls

Use: Enter / Exit (Entered through a Turret Control Panel)

Fire: Plasma

Alt-Fire: Shield

F4: Switch between first-person view and third-person view.

Prev / Next weapon: Prev / Next turret



Link Turret

Built by the same company, the Link Turret is just like its little brother, the Link Gun. Primary fire features plasma projectiles and Alt-Fire a beam. Beams can be linked to other turrets to increase their firepower, or heal teammates. The Turret also features basic auto-pilot and energy shield.

Controls

Use: Enter / Exit (Entered through a Turret Control Panel)

Fire: Plasma

Alt-Fire: Beam

Forward / Backward: Zoom

F4: Switch between first-person view and third-person view.

Prev / Next weapon: Prev / Next turret

Ion Cannon

An exact replica of the Ion Cannons used during the Skaarj War battles. During the 10 days siege, Ion Cannons were placed in the heart of major cities as a last hope to slow the Skaarj progress. While providing huge firepower, Ion Cannons also caused many human casualties with their large blast radius.

Controls

Use: Enter / Exit

Fire (Hold): Ion Plasma Beam

Alt-Fire: Zoom

F4: Switch between first-person view and third-person view.



GAME TIPS

Be sure to learn how to order your teammates around by using the Voice menu (the V key). Telling some of your buddies to attack while some defend or cover you proves invaluable in the Tournament.

At the start of a match you are in spectator mode. You are free to fly around the map and explore to your heart's content. Make sure you note the locations of the big guns, pickups and health, so you're not going into battle blind!

The moment a match starts, you are equipped with the Shieldgun and an Assault Rifle. These are good guns to start with, but there are much more effective weapons strategically placed throughout the battle arenas! Go and grab one before your foes do!

Remember to keep moving, because a moving target is harder to hit than a stationary one. Strafing is a great way to avoid getting shot (the left and right arrow keys will make you strafe side-to-side) while keeping your crosshair on your enemy. Use it or lose it!

Some weapons, such as the Rocket Launcher, cause an explosion that creates "splash damage." Use splash damage to hurt your enemies by aiming near them or on the ground in front of them. A couple of good splashes will take out your opponent in no time.

Many weapons are great for close combat, while others are better suited for long distance play. For instance, the Flak Cannon is great in close quarters, while the zoom of the sniper rifle makes it the ultimate long-range gun.

Many of the weapons that explode and cause splash damage will damage you if they explode too close to you. Be careful where you shoot, or you could lose points!

Sprees

If you manage to kill five or more opponents without dying yourself, you will be on a Killing Spree. You'll get a verbal notice and your enemies will receive a warning telling them that you're doing well. If you kill 10 or more foes, you are on a Rampage. There are many Spree levels — see how high you can get!

Dodging

In *Unreal Tournament 2004*, you can dodge by tapping a movement key twice in any direction. Turn this feature on in the Settings > Game menu. If you do not like this feature, you can turn it off, but be advised that many great players who learn this technique become *Unreal* masters.

Headshots

If you take someone out by taking their head off, you'll get a message letting you know that you nailed a headshot!

UT2004 GLOBAL STATS

Unreal Tournament 2004 supports for the freely available UT2004stats service. UT2004stats can track and display your scoring and provide statistical gameplay analysis for Internet games. To read up on this information you will need a web browser, such as the latest version of Netscape Navigator™, Internet Explorer™, or Safari™, installed on your computer.

UT2004stats organizes and tracks the scoring and statistical gameplay information from your multiplayer on-line *Unreal Tournament 2004* games. UT2004stats only tracks human players that have stats tracking turned on. AI computer opponents (Bots) are ignored in stats. This is how it works:

Turning on stats tracking in *Unreal Tournament 2004* logs all play information. Every kill, death, suicide, special event, point scored, etc. is sent to Epic Games' Master Server. UT2004stats interprets the information and stores it. You can look up your personal stats in the form of HTML-based pages via a Web browser.

Complete and total statistics include:

- Personal in-depth statistics for each player, lookup via unique PlayerID
- Detailed Match Stats for the most recent matches played
- Ranking for Deathmatch and team-based games
- Tracking for pure (mutator-free) official game types: Deathmatch, Team Deathmatch, Capture the Flag, Double Domination, Bombing Run, Assault, Onslaught, Last Man Standing, Mutant and Invasion.
- Tracking for the above game types with mutators turned on
- Custom mod tracking
- Global statistics — worldwide stats overview
- Powerful built-in search function
- "Best Of" pages
- Details on maps, servers and mods
- Extensive online help: FAQ and site map

For a detailed breakdown of weekly, monthly and all-time stats, visit UT2004stats at:

<http://ut2004stats.epicgames.com>

All of your stats will be accumulated in a permanent database that keeps track of exactly how many frags, deaths and more has happened to you in online games. It does not matter on what server you play — your data will be tracked.

UT2004stats — Registration, turning on Stats tracking

UT2004stats does not require pre-registration to participate, and extensive measures for player uniqueness and security have been included. Registration is easy via an in-game menu: Settings>Network>UT2004 Global Stats. Turn on UT2004stats tracking by clicking the Track Stats button. You must then choose a Stats Username and Stats Password. Try to make the combination of username and password unique by choosing a cryptic password that contains letters and numbers. Keep the password to yourself and remember it — the information is not available from Epic Games.

Note: You can pick any player name (nickname) you want, and change it as often as you want. Only the Stats Username and Stats Password should stay the same. The latter combination will assign a unique PlayerID to you. You can find your stats under this PlayerID.

NOTES



NOTES



NOTES



CREDITS

Epic

Producers
Cliff Bleszinski
Jeff Morris

Programming
Bruce Bickar
Dr. Michael Capps
Michel Comeau
Erik De Neve
Laurent Delany
James Golding
Ryan C. Gordon
Michiel Hendriks
Christoph A. Loewe
Warren Marshall
Matt Oelfke
Steve Polge
Jack Porter
Ron Prestenback
Andrew Scheidecker
Tim Sweeney
Daniel Vogel
Joe Wilcox

Art & Level Design
Ben Beckwith
Cliff Bleszinski
Chris Blundell
Christopher Buecheler
Shane Caudle
Phil Cole
Sjoerd De Jong
Paul Fahss
Cedric Fiorentino
Stuart Fitzsimmons
Steve Garofalo
Jeff Geis
Jeremy Graves
Alexander Lehmann
Jack Luttig
Warren Marshall
John Mueller
Rogelio Olguin
Nathan Overman
Chris Perna
Lee Perry
Sidney Rauchberger
Peter Respondek
Doug Schramm
David Sirmans
Teddie Tapawan
Joe Wilcox
Alan Willard

Animation
Alan Cruz
John Root
Chad Schoonover

Biz
Mark Rein
Jay Wilbur
Office Manager
Anne Dube

Music
Will Nevins
Kevin Riepl

Audio
Lani Minella, Audio Godz
Jamey Scott
Tommy Tallarico Studios

Scion Studios

Studio Director
Dr. Mike Capps

Art/Level Design
Jim Brown
Ryan Brucks
Ed Duke-Cox

Programming
Joe Graf

Psyonix Studios

Programming
Dave Hagewood
Per Vognsen

Art/Design
Eric Evans
Streamline Studios
David Sirmons
Robert Horvat
Sjoerd De Jong

Audio
Lani Minella, AudioGodz
Jamey Scott, Dramatic
Audio
Kevin Riepl
Will Nevins, Sound Design
Group

Digital Extremes

Programming
Adriano Bertucci
Jeff Jam
Glen Miner
Tony Pilger
Steve Sinclair
Justin Smith

Character Models &
Animation
James Edwards
Steve Jones

Art & Models
Mike Bastien
Geoff Crookes
Pancho Eekels
Dave Ewing
Bastiaan Frank
Mike Leatham
Scott McGregor
Tony Pilger
Everton Richards
Dan Sarkar
James Schmalz
Cassidy Scott
Mat Tremblay
Mario Vazquez

PR Director
Meridith Braun

Level Design
Mike Bastien
Pancho Eekels
Dave Ewing
Bastiaan Frank
Scott McGregor

Jean Rochefort
James Schmalz
Cassidy Scott

Sound & Music
Starsky Partridge

Writer & Localization
Mike Wagner

Voice Actors for UT2003
Mike Devine
Leanne Dixon
Christine Langos
Tim McClew
Yolande McLean
Mark Stiedler

Streamline Studios

Adrian Banninga
Renier Banninga
Stephan Baier
Jeroen Leurs
Hector Fernandez
Alexander Fernandez

Additional Concept Art & Miscellaneous Works

Additional Textures
Christian Bradley

Models & Art
Evelyn Eekels

Voice Talent
Shannon Ewing

Concept Art & Character
Models
Brian Griffith

Art Direction, Character
Art, Additional Art
Martin Murphy

Atari

Executive Producer
Steve Ackrich

Senior Producer
Peter Wyse

Producers
Tim Hess
David T. Brown

V.P. of Brand Marketing
Steve Allison

Directors of Brand
Marketing
Chris Mollo
Jean Raymond

Brand Managers
Scott McCarthy
Richard Iggo

Director of Marketing
Communications
Kristine Keever

Director of Creative
Services
Steve Martin

Senior Art Director
David Gaines

Director of Editorial &
Documentation Services
Elizabeth Mackney

Documentation Specialist
Chris Dawley

Copywriter
Norm Schrager

Director of Publishing
Support
Michael Gilmartin
I.T. Manager/Western Region
Ken Ford
Manager of Technical
Support
Michael Vetsch
Senior Q.A. Testing Manager
Dave Strang

Lead Tester
Mark Huggins
Jeff Loney
Assistant Lead Tester
Scott Bigwood
Paul Phillips

Testers
Phil Allers
Brett Casta
Joe Faulstick
Mark Florentino
Tim Higgins
Erik Jeffery
Jason Johnson
Clif McClure
Mike Murphy
Tim Lang
Milton Laureano
Andrew LeMat
Conor Sullivan
Carl Vogel
Stephan Wenninger
Jeremiah Williams
Mark Alibayan
Jason Pope
Mark Baylon

Compatibility Lab
Supervisor
Dave Strang

Compatibility Test Lead
Randy Buchholz

Compatibility Analysts
Jason Cordero
Mark Florentino
Chris McQuinn
Cuong Vu
Patricia-Jean Cody

Director, New Business
Development
Tim Campbell

Content Manager
Mark T. Morrison
Senior PR Manager
Matt Frary

Director, Online
Jon Nelson

Senior Producer, Online
Kyle Peschel

Senior Programmer, Online
Gerald "Monkey" Burns

Senior Web Designer, Online
Richard Leighton

Special Thanks

Kurt Akeley
Drew Angeloff
Ben Ashbaugh
Dave Bartolomeo
Brian Benincasa
Chris Bentley
Bob Beretta
Jim Black
Mike Burrows
Aaron Burton
Liam Byrne
Cem Cebenoyan
Sam Charchian
Keith Charley
Sean Costello
Tony Cox
Matt Craighead
Scott Currie
Will Damon
John David
Joe Deng
Sim Dietrich
Eric Dmers
Beth Doherty
Chris Donahue
Mike Drummelsmith
Kenneth Dyke
Atom Ellis
Steve Engelbrecht
Cass Everitt
Matthew Formica
Thomas Fortier
Ken Fowles
Kang Su Gatlin
Alan Gerrard
Jeff Golds
Juan Guardado
Syed Aqueel Hamdani
Rick Hammerstone
Ted Hase
Jerad Heck
Jeff Herbst
Richard Hernandez
Garin Hiebert
Aron Ho
Stephen Holmes

Beatriz Hubert
Gareth Hughes
Aki Jarvilehto
Anantha Kancherla
Jenny Keily
Mark Kenworthy
Scott Kephart
Mark Kilgard
Dave Kirk
Kent Knox
Joe Kreiner
Kristoffer Larson
Jon Leech
Terry Leeper
Barthold Lichtenbelt
Gary Lusk
Scott MacDonald
Rob Mace
Dean Macri
Herb Marselas
Matt McClellan
Skip McIlvaine
Max McMullen
Andy Mecham
Jason Mitchell
Alan Modra
Jack Moffit
Derek Moore
Sameer Nene
David Notario
Kim Pallister
Sanjay Patel
Daniel Peacock
Derek Perez
Emmett Plant
Bimal Poddar
Wallace Poulter
Kan Qiu
Bill Rehbock
Guennadi Riguer
Thomas Roell
Daniel Rohrer
Ian Romanick
Randi Rost
Jeff Royle
Sanford Russell
Sarah Sarmiento
Jason Schellenberg
John Schimpf
Phil Scott
Jeffery Seaman
Anand Lal Shimpi
Rex Sikora
Connie Siu
Elias Slater
John Smith
Michael Smith

Lori Solomon
Geoff Stahl
John Stauffer
Micah Stroud
Iouri Tarassov
Philip Taylor
Nicolas Thibieroz
Nick Triantos
Jon Trulson
Matt Tullis
Joe Valenzuela
Jean-Marc Valin
Dan Vivoli
Carlo Vogelsang
Mike Walk
Karen Wilder
Steve Willett
Timothy Wilson
Matthew Witheiler
David Yackley
Wei-Wei Yin
Dave Zenz
Monty

VTM Development Team

CEO/President of
3D Buzz, Inc.
Jason Busby
CTO of 3D Buzz, Inc.
Logan Frank
3D Buzz Instructor
Joel Van Eenwyk
3D Buzz Instructor
Zak Parrish
3D Buzz Instructor
Derek Stevens
3D Buzz Instructor
David Aguilar



DivX is a registered trademark of DivXNetworks, Inc. in the USA and other countries.

DivX® Video provided by
DivXNetworks, Inc. COPY-
RIGHT © 2000-2003.

Karma Physics Library
Copyright 2003 Criterion
Software Limited. Karma is
a trademark of Criterion
Software Limited, used
under license.

Microsoft Speech Software
Development Kit, Version
5.1 Copyright 2003
Microsoft.

Ogg Vorbis Copyright
2001-2003, Xiph.Org
Foundation

Speex Copyright 2002-
2003, Jean-Marc Valin/
Xiph.Org Foundation

Uses Miles Sound System.
Copyright © 1991-2003 by
RAD Game Tools, Inc.

MPEG Layer-3 playback
supplied with the Miles
Sound System from RAD
Game Tools, Inc. MPEG
Layer-3 audio compression
technology licensed by
Fraunhofer IIS and THOM-
SON multimedia.

Simple DirectMedia Layer
library is used under the
terms of the LGPL License.
The LGPL License may be
found on the CD.

Linux and Mac version of
OpenAL are used under
the terms of the LGPL
License. The LGPL License
may be found on the CD.

dlcompat Copyright © 2004
Jorge Acera
<jacereda@users.sourceforge.net> & Peter
O'Gorman
<ogorman@users.sourceforge.net>

UNREAL TOURNAMENT® 2004 WEB SITE

For more information on *Unreal Tournament 2004*, tips and tricks, access to the Unreal Tournament community, and the latest updates and downloads, go to:

<http://www.unrealtournament.com>

TECHNICAL SUPPORT (U.S. & Canada) MacSoft Product Support Services

Product Name Unreal Tournament 2004

Support Info Online: <http://www.macsoftgames.com>

Phone Support: (763) 231-8050 in the U.S., Canada, Australia, and New Zealand. Please have the following information available before calling the technical support hotline:

- What kind of Macintosh you own.
- Which version of MacOS you are using.
- How much "built-in" memory (RAM) is in your computer.

Note: The above information is available in the Apple System Profiler on your Mac.

Ordering MacSoft Products

You will find MacSoft games at most Macintosh resellers. You can order directly from MacSoft on the web, or by phone. Our web address is: www.macsoftgames.com. Our toll-free order line is: 866-512-9111.

Contacting MacSoft

MacSoft

13755 1st Ave N, Ste 500

Plymouth, MN 55441

Phone: 763-231-8100

Email:

Technical Support: support@macsoftgames.com

Customer Service: service@macsoftgames.com

Mac Version Credits

Epic

Programming
Ryan C. Gordon

MacSoft

President
Peter Tamte
General Manager
Al Schilling
QA Manager
James Robrahn
Technical Support Manager
Greg Grimes
Graphic Design
David Stengel

Installer Created By

Gregory S. Read

Special Thanks

Rich Hernandez
Wallace Poulter
Chris Bentley
John Stauffer
Thomas Fortier
Geoff Stahl
Phil Churchill
Gavriel State
Sanjay Patel
Bret Wilson
Matthew Henderson
Carrie Ochal



Warranty Policy

If our technicians determine that the product storage medium is found to be defective within ninety (90) days of original purchase, (unless otherwise provided by applicable law), MacSoft will replace the item free of charge, to the original purchaser, if the item is accompanied by the original dated receipt and packaging. If you do not have the original receipt, or if the warranty period has expired, MacSoft will replace the product storage medium for a nominal fee.

END-USER LICENSE AGREEMENT

PLEASE READ CAREFULLY. BY USING OR INSTALLING THIS SOFTWARE, OR BY PLACING OR COPYING THIS SOFTWARE ON YOUR COMPUTER HARDWARE, COMPUTER RAM OR OTHER STORAGE MEDIUM, YOU ARE AGREEING TO BE BOUND BY THE TERMS OF THIS LICENSE. IF YOU DO NOT AGREE TO THESE TERMS, PROMPTLY DISCONTINUE THE INSTALLATION PROCESS AND CEASE ALL USE OF THIS SOFTWARE.

1. Thanks. Congratulations and thank you for licensing our software. We're sorry to cramp your style, but our lawyers tell us that if we want to keep control and ownership of the cool stuff we're developing, we have to make sure you understand and agree that you are just buying a right to use it and that that right is limited in certain ways. So what follows is what you need to know and agree to.

2. License. The software accompanying this license and the related documentation (the "Software") are licensed for your use and gaming enjoyment, subject to terms and limitations in this license agreement. The license fee you paid gives you the right to use the Software. If the Software is configured for loading onto a hard drive, you may only load the Software onto the hard drive of a single computer and only run the Software off that hard drive, however you may participate in a multiplayer configuration (such as in an Internet gaming room) with other players who also have valid licenses; in other words, your friends must license their own copies of the Software.

3. Commercial Exploitation. You may not use this game, or any Mods created for this game or using the tools provided with this game, for any commercial purposes without the prior written consent of Epic Games Inc. including, but not limited to, the following rules: 1. If you are the proprietor of an Internet café or gaming room, you may operate the Software in a "pay for play" environment provided that all computers used have validly licensed Software installed, such Software having been purchased at a retail store or other similar provider (we do not offer volume discounts or multi-install licenses). 2. You may not, without prior written consent from Epic, operate the Software in any gaming contest where (a) the cash value of all winnings and prizes paid throughout the entire competition is equal to or greater than US\$5,000.00 OR (b) the name of the event, or any individual contest therein, incorporates or approximates the name of a company, product or commercial service OR (c) any company has provided, whether donated or as sponsorship, prizes, or otherwise, products or services worth with a fair market value of over US\$5,000.00.

4. Use Restrictions. We want you to enjoy our products for years to come, and we want to be able to continue to make awesome games, so you need to be aware that there are some things you cannot do with the Software. The Software contains copyrighted material, trade secrets and other proprietary material. You may not decompile, modify, reverse engineer, publicly display, prepare derivative works based on the Software, disassemble or otherwise reproduce the Software. Except as set forth herein, you may not rent, sell, lease, barter, sublicense or distribute the Software. You may not delete the copyright notices or any other proprietary legends on the original copy of the Software. You may not offer the Software on a pay-per-play basis or otherwise commercially exploit the Software or use the Software for any commercial purpose except as described in this agreement. You may not electronically transmit the Software from one computer to another or over a network. You may not ship or export the Software to any country other than where you bought it, in violation of the U.S. Export Administration Act (or any other law governing such matters) and you will not utilize and will not authorize anyone to utilize the Software in violation of any applicable law. The Software may not be downloaded or otherwise exported into (or to a national or resident of) any country to which the U.S. has embargoed goods or to anyone or into any country who/which are prohibited by applicable law from receiving it.

5. Termination. This license is effective until one of us terminates it. You may terminate this license at any time by destroying the Software and related documentation. In the unlikely event that you are naughty and fail to comply with any provision of this license, this license will terminate immediately without notice from us. Upon termination, you must destroy the Software and related documentation. Please don't wait for us to come after you; it would not be pleasant for either of us. If we do have to come after you, we're going to expect you to pay us for our troubles, including the cost of our lawyers.

6. Disclaimer of Warranty on Software. You are aware and agree that use of the Software and the media on which it is recorded is at your sole risk. The Software, related documentation and the media are provided "AS IS". Unless otherwise provided by applicable law, MacSoft warrants to the original purchaser of this product that the Software storage medium will be free from defects in material and workmanship under normal use for ninety (90) days from the date of purchase. By the way, MacSoft provides this end-user warranty as the publisher of the Software. This warranty is void if the defect has arisen through accident, abuse, neglect or misapplication. MACSOFT AND EPIC

GAMES, INC. ("EPIC") EXPRESSLY DISCLAIM ALL OTHER WARRANTIES, EXPRESS OR IMPLIED, INCLUDING BUT NOT LIMITED TO, THE IMPLIED WARRANTIES OF MERCHANTABILITY AND FITNESS FOR A PARTICULAR PURPOSE. WE DO NOT WARRANT THAT THE FUNCTIONS CONTAINED IN THE SOFTWARE WILL MEET YOUR REQUIREMENTS. NO ORAL OR WRITTEN INFORMATION OR ADVICE GIVEN BY US OR ANY OF OUR AUTHORIZED REPRESENTATIVES SHALL CREATE A WARRANTY OR IN ANY WAY INCREASE THE SCOPE OF THIS WARRANTY. SOME JURISDICTIONS DO NOT ALLOW THE EXCLUSION OF IMPLIED WARRANTIES, SO THE ABOVE EXCLUSIONS MAY NOT APPLY TO YOU.

7. Limitation of Liability. UNDER NO CIRCUMSTANCES, INCLUDING WITHOUT LIMITATION, NEGLIGENCE, SHALL MACSOFT, EPIC OR ANY OF THEIR RESPECTIVE OFFICERS, EMPLOYEES, DIRECTORS, AGENTS, LICENSEES, SUBLICENSEES OR ASSIGNS BE LIABLE FOR ANY INCIDENTAL, SPECIAL OR CONSEQUENTIAL DAMAGES THAT RESULT FROM THE USE OR INABILITY TO USE THE SOFTWARE OR RELATED DOCUMENTATION, EVEN IF SUCH PARTIES HAVE BEEN ADVISED OF THE POSSIBILITY OF THOSE DAMAGES. SOME JURISDICTIONS DO NOT ALLOW THE LIMITATION OR EXCLUSION OF LIABILITY FOR INCIDENTAL OR CONSEQUENTIAL DAMAGES SO THE ABOVE LIMITATION OR EXCLUSION MAY NOT APPLY TO YOU. In no event shall Epic and MacSoft's total liability to you for all damages, losses, and causes of action (whether in contract, tort or otherwise) exceed the amount paid by you for the Software.

8. Controlling Law and Severability. This license is governed by and construed in accordance with the laws of the State of North Carolina, USA. Exclusive venue for all litigation shall be in Wake County, North Carolina. If any provision of this license is unenforceable, the rest of it shall remain in effect.

9. Complete Agreement. This license constitutes the entire agreement between the parties with respect to the use of the Software and the related documentation. However, MacSoft and Epic reserve the right to modify the terms of this license from time to time and will post notice of material changes somewhere within www.epicgames.com.

10. Copyright. The Software and all copyrights, trademarks and all other conceivable intellectual property rights related to the Software are owned by Atari, Epic, MacSoft, or such parties' licensors and are protected by United States copyrights laws, international treaty provisions, an army of clones, and all applicable law, such as the Lanham Act. You must treat the Software like any other copyrighted material, as required by 17 U.S.C. section 101 et seq. and other applicable law. Please do not make unauthorized copies. The program you've licensed was produced through the efforts of many people who earn their livelihood from its lawful use. These people like to eat, so don't make copies for others who have not paid for the right to use it. To report copyright violations to the Software Publishers Association, call 1-800-388-PIR8 or write: Software Publishers Association, 1101 Connecticut Ave., Suite 901, Washington, D.C. 20036.

11. Enjoyment Requirements. We are aware that there are rumblings and grumbings within the gaming community about heavy handed, legally onerous license agreements. You have our word that this one is as fair and even handed as it gets and, as you have read this far, you know it to be true. Now, be gone from this screen and enjoy the Software.

Microsoft Speech Software Development Kit, Version 5.1

Redistributable Code

The Redistributable Code is the property of Microsoft Corporation and its suppliers and is protected by copyright law and international treaty provisions. You are authorized to make and use copies of the Redistributable Code either as part of the application in which you received the Redistributable Code, or in conjunction with the application for which its use is intended. Except as expressly provided in the foregoing sentence, you are not authorized to reproduce and distribute the Redistributable Code. Microsoft reserves all rights not expressly granted. You may not reverse engineer, decompile, or disassemble the Redistributable Code, except and only to the extent that such activity is expressly permitted by applicable law notwithstanding this limitation.

THE REDISTRIBUTABLE CODE IS PROVIDED TO YOU "AS IS" WITHOUT WARRANTY OF ANY KIND, EITHER EXPRESS OR IMPLIED, INCLUDING BUT NOT LIMITED TO THE IMPLIED WARRANTIES OF MERCHANTABILITY AND/OR FITNESS FOR A PARTICULAR PURPOSE. YOU ASSUME THE ENTIRE RISK AS TO THE ACCURACY AND THE USE OF THE REDISTRIBUTABLE CODE. MICROSOFT SHALL NOT BE LIABLE FOR ANY DAMAGES WHATSOEVER ARISING OUT OF THE USE OF OR INABILITY TO USE THE REDISTRIBUTABLE CODE, EVEN IF MICROSOFT HAS BEEN ADVISED OF THE POSSIBILITY OF SUCH DAMAGE.

Redistributable Code

Redistributable Code is identified as the following files and all of the files can be found at the following location:

<http://www.microsoft.com/speech/download/licensing/>

DIVXNETWORKS, INC. END-USER LICENSE AGREEMENT

YOU SHOULD CAREFULLY READ THE FOLLOWING TERMS AND CONDITIONS BEFORE USING THIS PRODUCT. IT CONTAINS SOFTWARE, THE USE OF WHICH IS LICENSED BY DIVXNETWORKS, INC., TO ITS CUSTOMERS FOR THEIR USE ONLY AS SET FORTH BELOW. IF YOU DO NOT AGREE TO THE TERMS AND CONDITIONS OF THIS AGREEMENT, DO NOT USE THE SOFTWARE. USING ANY PART OF THE SOFTWARE INDICATES THAT YOU ACCEPT THESE TERMS.

GRANT OF LICENSE: DivXNetworks, Inc. (the "Licensor") grants to you this personal, limited, non-exclusive, non-transferable, non-assignable license solely to use in a single copy of the Licensed Works on a single computer for use by a single concurrent user only, and solely provided that you adhere to all of the terms and conditions of this Agreement. The foregoing is an express limited use license and not an assignment, sale, or other transfer of the Licensed Works or any Intellectual Property Rights of Licensor.

ASSENT: By opening the file package containing this software, you agree that this Agreement is a legally binding and valid contract, agree to abide by the intellectual property laws and all of the terms and conditions of this Agreement, and further agree to take all necessary steps to ensure that the terms and conditions of this Agreement are not violated by any person or entity under your control or in your service.

OWNERSHIP OF SOFTWARE: The Licensor and/or its affiliates or subsidiaries own certain rights that may exist from time to time in this or any other jurisdiction, whether foreign or domestic, under patent law, copyright law, publicity rights law, moral rights law, trade secret law, trademark law, unfair competition law or other similar protections, regardless of whether or not such rights or protections are registered or perfected (the "Intellectual Property Rights"), in the computer software and hardware, together with any related documentation (including design, systems and user) and other materials for use in connection with such computer software in this package (collectively, the "Licensed Works"). ALL INTELLECTUAL PROPERTY RIGHTS IN AND TO THE LICENSED WORKS ARE AND SHALL REMAIN IN LICENSOR.

NO COMMERCIAL USE: This License Agreement grants you the right to use the Software for personal use only. Commercial use of the Software or of the work products resulting from its use is not permitted under this License Agreement.

RESTRICTIONS:

- (a) You are expressly prohibited from copying, modifying, merging, selling, leasing, redistributing, assigning, or transferring in any matter, Licensed Works or any portion thereof.
- (b) You may take a single copy of materials within the package or otherwise related to Licensed Works only a required for backup purposes.
- (c) You are also expressly prohibited from reverse engineering, decompiling, translating, disassembling, deciphering, decrypting, or otherwise attempting to discover the source code of the Licensed Works as the Licensed Works contain proprietary material of Licensor. You may not otherwise modify, alter, adapt, port, or merge the Licensed Works.
- (d) You may not remove, alter, deface, overprint or otherwise obscure Licensor patent, trademark, service mark or copyright notices.
- (e) You agree that the Licensed Works will not be shipped, transferred or exported into any other country, or used in any manner prohibited by any government agency or any export laws, restrictions or regulations.
- (f) You may not publish or distribute in any form of electronic or printed communication the materials within or otherwise related to Licensed Works, including but not limited to the object code, documentation, help files, examples, and benchmarks.

TERM: This Agreement is effective until terminated. You may terminate this Agreement at any time by uninstalling the Licensed Works and destroying all copies of the Licensed Works. Upon any termination, you agree to uninstall the Licensed Works and return or destroy all copies of the Licensed Works, any accompanying documentation, and all other associated materials.

WARRANTIES AND DISCLAIMER:

EXCEPT AS EXPRESSLY PROVIDED OTHERWISE IN A WRITTEN AGREEMENT BETWEEN LICENSOR AND YOU, THE LICENSED WORKS ARE NOW PROVIDED "AS IS" WITHOUT WARRANTY OF ANY KIND, EITHER EXPRESS OR IMPLIED, INCLUDING, BUT NOT LIMITED TO, THE IMPLIED WARRANTIES OF MERCHANTABILITY OR FITNESS FOR A PARTICULAR PURPOSE, OR THE WARRANTY OF NON-INFRINGEMENT. WITHOUT LIMITING THE FOREGOING, LICENSOR MAKES NO WARRANTY THAT (i) THE LICENSED WORKS WILL MEET YOUR REQUIREMENTS, (ii) THE USE OF THE LICENSED WORKS WILL BE UNINTERRUPTED, TIMELY, SECURE, OR ERROR-FREE, (iii) THE RESULTS THAT MAY BE OBTAINED FROM THE USE OF THE LICENSED WORKS WILL BE ACCURATE OR RELIABLE, (iv) THE QUALITY OF THE LICENSED WORKS WILL MEET YOUR EXPECTATIONS, (v) ANY ERRORS IN THE LICENSED WORKS WILL BE CORRECTED, AND/OR (vi) YOU MAY USE, PRACTICE, EXECUTE, OR ACCESS THE LICENSED WORKS WITHOUT VIOLATING THE INTELLECTUAL PROPERTY RIGHTS OF OTHERS. SOME STATES OR JURISDICTIONS DO NOT ALLOW THE EXCLUSION OF IMPLIED WARRANTIES OR LIMITATIONS ON HOW LONG AN IMPLIED WARRANTY MAY LAST, SO THE ABOVE LIMITATIONS MAY NOT APPLY TO YOU. IF CALIFORNIA LAW IS NOT HELD TO APPLY TO THIS AGREEMENT FOR ANY REASON, THEN IN JURISDICTIONS WHERE WARRANTIES, GUARANTEES, REPRESENTATIONS, AND/OR CONDITIONS OF ANY TYPE MAY NOT BE DISCLAIMED, ANY SUCH WARRANTY, GUARANTEE, REPRESENTATION AND/OR WARRANTY IS: (1) HEREBY LIMITED TO THE PERIOD OF EITHER (A) THIRTY (30) DAYS FROM THE DATE OF OPENING THE PACKAGE CONTAINING THE LICENSED WORKS OR (B) THE SHORTEST PERIOD ALLOWED BY LAW IN THE APPLICABLE JURISDICTION IF A THIRTY (30) DAY LIMITATION WOULD BE UNENFORCEABLE; AND (2) LICENSOR'S SOLE LIABILITY FOR ANY BREACH OF ANY SUCH WARRANTY, GUARANTEE, REPRESENTATION, AND/OR CONDITION SHALL BE TO PROVIDE YOU WITH A NEW COPY OF THE LICENSED WORKS.

IN NO EVENT SHALL LICENSOR OR ITS SUPPLIERS BE LIABLE TO YOU OR ANY THIRD PARTY FOR ANY SPECIAL, INCIDENTAL, INDIRECT OR CONSEQUENTIAL DAMAGES OF ANY KIND, OR ANY DAMAGES WHATSOEVER, INCLUDING, WITHOUT LIMITATION, THOSE RESULTING FROM LOSS OF USE, DATA OR PROFITS, WHETHER OR NOT LICENSOR HAD BEEN ADVISED OF THE POSSIBILITY OF SUCH DAMAGES, AND ON ANY THEORY OF LIABILITY, ARISING OUT OF OR IN CONNECTION WITH THE USE OF THE LICENSED WORKS. SOME JURISDICTIONS PROHIBIT THE EXCLUSION OR LIMITATION OF LIABILITY FOR CONSEQUENTIAL OR INCIDENTAL DAMAGES, SO THE ABOVE LIMITATIONS MAY NOT APPLY TO YOU. THESE LIMITATIONS SHALL APPLY NOTWITHSTANDING ANY FAILURE OF ESSENTIAL PURPOSE OF ANY LIMITED REMEDY.

SEVERABILITY: In the event any provision of this License Agreement is found to be invalid, illegal or unenforceable,

the validity, legality and enforceability of any of the remaining provisions shall not in any way be affected or impaired and a valid, legal and enforceable provision of similar intent and economic impact shall be substituted therefore.

ENTIRE AGREEMENT: This License Agreement sets forth the entire understanding and agreement between you and DivXNetworks, Inc., supersedes all prior agreements, whether written or oral, with respect to the Software, and may be amended only in a writing signed by both parties.

DivXNetworks, Inc. 10350 Science Center Drive Building 14, Suite 140 San Diego, California 92121 3 September 2002

Dolby and the double-D symbol are trademarks of Dolby Laboratories.

Unreal® Tournament 2004 © 2004 Epic Games, Inc. Unreal is a registered trademark of Epic Games, Inc. ALL RIGHTS RESERVED. All other trademarks are the property of their respective owners. Manufactured and marketed by MacSoft under license from Atari, Inc., New York, NY.