

Universal Serial Bus Interface External Floppy Disk Drive Unit

Standard Model



USB FDD

Installation Guide

For USB FDD Driver CD-ROM P/N 139283-01 Rev. B

Copyright © Lacie Group. All Rights Reserved.

Important Safety Instructions

 Attention	<ol style="list-style-type: none">1) Please read all of the ReadMe file on the Driver CD-ROM before using.2) The manufacturer and distributor accept absolutely no responsibility nor liability for any loss, damage, or injury due to the improper use of the USB FDD.
 Don't	<ol style="list-style-type: none">1) The USB FDD is a precision machine adjusted by the manufacturer. Do not drop, strike, shock or crush the USB FDD, as this may invite trouble.2) Remove any floppy disk from the USB FDD when not in use or when carrying.3) Do not carry or dangle the USB FDD by it's cable.4) Do not use the USB FDD near water, nor spill any liquid on it.5) Do not open the USB FDD, as it may damage the unit or cause an electric shock.6) Do not use the near the radio transmitter such as caller phone.

- Reproduction in whole or in part of this software and instruction manual, and the leasing of this software, without written permission of the licensor, are prohibited by the Copyright Law.
- This software is for use only with the designated equipment.
- The specification of this software is subject to change without notice for improvement.
- No liability whatsoever is assumed for any damages of any kind, including without limitation damages for loss of business or profits, other pecuniary loss, or third party claims, resulting from the use of the software included with this product.
- No liability whatsoever is assumed for any damages of any kind caused by misuse or by other equipment, or for trouble or damage incurred by unauthorized repair or alteration.
- Products with defects caused during manufacturing will gladly be replaced. No liability whatsoever is assumed for defects due to other causes.

Apple, Mac and Macintosh are trademark of Apple Computer.
Microsoft Windows is a trademark of Microsoft Corporation.
Lacie Group is a trademark of Lacie Group S.A.
All other trademarks are the property of their respective owners and are hereby acknowledged.

Index

1. Introduction.....	4
1.1. Features of the USB FDD	4
1.2. Working Environment	4
1.3. Part Names of Standard Model	5
1.4. Package Contents	5
1.5. Overview of Driver Installation.....	6
2. Mac OS X (Version 10.1 or later).....	7
2.1. Installation.....	7
2.2. Operating & Connecting the USB FDD	7
2.3. Restrictions	8
3. Mac OS 8.6, 9.0, 9.0.4, 9.1 and 9.2.....	9
3.1. Installation.....	9
3.2. Manual Installation and un-installation	9
3.3. Operating & Connecting the USB FDD	9
3.4. Restrictions	10
3.5. PACE Anti-Piracy's USB Floppy Enabler	11
4. Windows XP.....	12
4.1. Installation.....	12
4.2. How to Unplug the USB Cable.....	12
5. Windows 2000.....	13
5.1. Installation.....	13
5.2. How to Unplug the USB Cable	13
6. Windows Millennium Edition (Me).....	14
6.1. Installation.....	14
6.2. How to Unplug the USB Cable.....	14
7. Windows 98 and Windows 98 Second Edition.....	15
7.1. USB FDD Driver Installation.....	15
7.2. Optional setting to use USB FDD as drive letter A:	17
8. Restrictions Windows 98, Windows Me and Windows 2000	19
9. Windows CE	20
9.1. Installing with the Windows CE Service	20
9.2. To install using an Internet connection directly to your Handheld PC:.....	23
9.3. Restrictions	24
10. Specifications.....	25
10.1. Temperature Range.....	25
10.2. Humidity Range	25
10.3. Operating Position	25
10.4. Supported Diskette Types (3.5 inch).....	25
11. Support	25
11.1. Contact Your Dealer	25
11.2. Contact Lacie.....	25

1. Introduction

The USB FDD is a slim type floppy disk drive (FDD) with a Universal Serial Bus (USB) interface. The USB FDD plugs into the USB port of your personal computer (PC). To use the USB FDD, you need a personal computer with a USB port, an operating system that supports USB, and the USB FDD driver software. This guide tells you how to install the USB FDD driver software.

1.1. Features of the USB FDD

- 1) Supports dynamic “plug-and-play”, plugging and unplugging the USB FDD without restarting your computer.
- 2) Supports Macintosh, Windows 98, Windows Me, Windows 2000, Windows XP and Windows CE computers.
- 3) Works without any additional AC adapter, so you can use it anywhere.

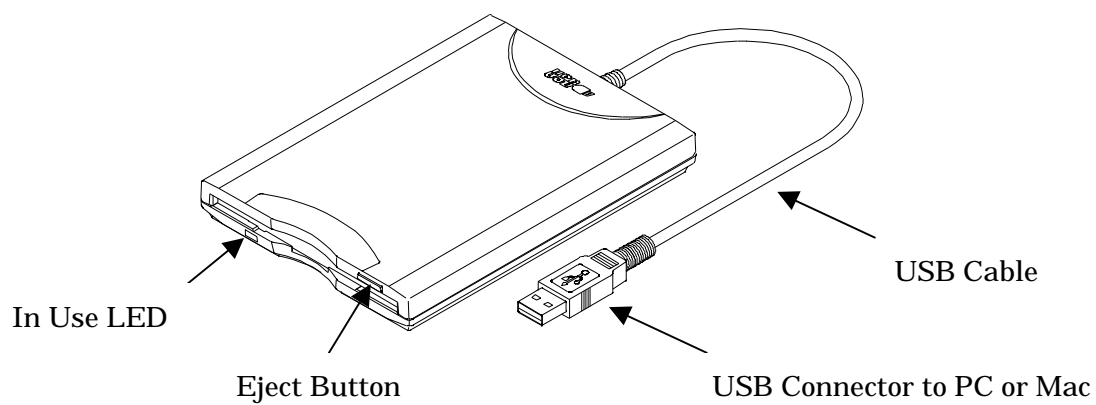
1.2. Working Environment

Macintosh	Mac OS X Ver.10.1 or Higher	Works with standard built-in driver of OS X.
	Mac OS 8.6 Mac OS 9.0 Mac OS 9.0.4 Mac OS 9.1, 9.2	iMac Power Mac G3 / G4 Power Book G3 / G4 iBook
Windows	Windows XP Windows 2000 Windows Millennium Edition (Me)	Works with standard built-in driver of Windows.
	Windows 98 Windows 98 Second Edition (SE)	
Windows CE	Windows CE 2.11 (H/PC Pro 3.0) Windows Powered Hand Held PC 2000	Supported processor types: ARM, MIPS and SH4.

Note:

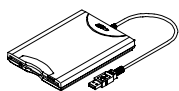
- 1) The USB FDD driver for Macintosh does not support Mac OS 8.1 and Mac OS 8.5. If your iMac has Mac OS 8.1 or Mac OS 8.5, please update Mac OS 8.6 or later. More information about updating your iMac is available on the web at <http://www.apple.com/swupdates/>
- 2) According to Apple computer Inc., some Macintosh computers with Mac OS 9.0.2 or 9.0.3 may stop responding when certain Universal Serial Bus (USB) devices are connected. Please update to Mac OS 9.0.4 or later. More information about this problem is available on the web at <http://til.info.apple.com/techinfo.nsf/artnum/n25139>.

1.3. Part Names of Standard Model

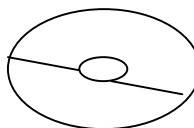


1.4. Package Contents

USB FDD Unit



Driver CD-ROM



1.5. Overview of Driver Installation

Operating System	Description	Refer to:
Mac OS X	No Drivers are necessary.	Page 7
Mac OS 9.0 Mac OS 9.0.4 Mac OS 9.1 Mac OS 9.2	Software must be set up before USB connection. 1) Run "USB FDD Installer" located in the driver CD-ROM. 2) Upon completion of installing the driver, restart your Macintosh. 3) Connect the USB FDD to your Macintosh and insert a formatted diskette into the USB FDD. A diskette icon will appear on the desktop.	Page 9
Windows XP	Connecting a USB triggers software setup. 1) USB FDD works with the Windows XP, 2000 and Me, standard built-in driver. Therefore, no additional driver installation is necessary.	Page 12
Windows 2000	2) Just plug your USB FDD to your PC. Windows will detect the USB FDD and install the necessary drivers automatically.	Page 13
Windows Me	3) A new 3½ Floppy disk icon will appear in the "My Computer" folder.	Page 14
Windows 98 Windows 98 SE	Software must be set up before USB connection. 1) Run "USBFDD.exe" located in the driver CD-ROM. 2) Upon completion of installing the driver, restart your PC. 3) Connect the USB FDD to your PC. Windows will detect the USB FDD and install the necessary drivers automatically. 4) A new 3½ Floppy disk icon will appear in the "My Computer" folder.	Page 15
Windows CE	Software must be set up before USB connection. 1) Connect your Handheld PC to your host Windows PC with the Windows CE Service software and cable. 2) Place the USB FDD driver CD in the CD-ROM drive connected to the host Windows PC. 3) Run the Setup program located in the WINCE folder of the driver CD-ROM. 4) Connect the USB FDD to your Handheld PC and insert a formatted diskette into the USB FDD. The diskette can be access as " Storage Card " folder in the "My Handheld PC".	Page 20

2. Mac OS X (Version 10.1 or later)

2.1. Installation

The USB FDD works with the standard “USB Mass Storage Support” driver that is built in to Mac OS X. Therefore, no additional driver is necessary.

- 1) Start up Mac OS X.
- 2) Plug your USB FDD into the USB port of your Macintosh. When you insert a formatted floppy diskette into the USB FDD, a removable disk icon will appear on the Macintosh desktop. The diskette can now be accessed.

2.2. Operating & Connecting the USB FDD

- 1) Insert a Floppy Diskette

Insert a formatted floppy diskette into the USB FDD; a removable disk icon will appear on the desktop. The diskette can now be accessed.



A floppy disk will be displayed as a removable disk icon

- 2) Ejecting a Floppy Diskette (IMPORTANT)

Drag the removable disk icon on to the trashcan. The trashcan icon will change to an eject icon. Then drop the removable disk icon. Or single click the floppy diskette icon and select [Eject] from the Finder [Special] menu. After that, push the eject button of USB FDD unit to eject the floppy diskette.



Do not remove the floppy diskette excepted as outlined above. If you remove the floppy diskette without following the Eject procedure above, Mac OS may become unstable, and the contents of diskette may be damaged.

3) Connecting the USB FDD

The USB FDD is designed for Hot-Plug. You may plug in the USB FDD at any time.

4) Disconnecting the USB FDD

Before you unplug the USB FDD, be sure that any floppy diskettes have been ejected as outlined in step 2) above.

Do not unplug the USB FDD during sleep mode. This may cause errors when resuming your Macintosh.

If sleep mode does not seem to work correctly, try unplugging the USB FDD before entering sleep mode.

2.3. Restrictions

- 1) It takes about 30 seconds to mount DOS-formatted media. A Mac-formatted media can be mounted in about 10 seconds.
- 2) Under Mac OS X, it is impossible to format (initialize) to Mac-standard 1.4 MB, because the OS does not have the appropriate menu.
- 3) Mac-formatted media formatted on Mac OS 9.x and 8.x are readable and writable, but desktop folders and other hidden files become visible. (This problem may be fixed in Mac OS 10.1.1 and later.)
- 4) We recommend you format your floppy diskettes using Mac OS 9.x or 8.x.

3. Mac OS 8.6, 9.0, 9.0.4, 9.1 and 9.2

3.1. Installation

You must first install the USB FDD driver software on your Macintosh before you use the USB FDD. Do not connect the USB FDD until you have installed the driver files.

If your PC has Mac OS 9.0 or later, USB FDD works with “USB Mass Storage Support ” Driver that is a Mac OS standard built-in driver made by Apple Computer.

In this case, it is not necessary to install the USB FDD driver from the driver CD-ROM.

- 1) Insert the USB FDD driver CD-ROM into your Macintosh.
- 2) A CD-ROM window will open automatically. If it doesn't open, double click the CD-ROM icon on the desktop.
- 3) Double click the USB-FDD installer icon that appears in the CD-ROM window.
- 4) When installation of the USB FDD driver has completed, restart your Macintosh.
- 5) After your Macintosh restarted, plug the USB FDD into the USB port of your Macintosh.
- 6) Insert a formatted floppy diskette into the USB FDD. A floppy icon will appear on the Macintosh desktop.

3.2. Manual Installation and un-installation

To perform a manual installation, please use the following instructions:

- 1) Copy the file named “YE USB-FDU” and “YE USB-FDU Shim” to the Extensions folder in the System folder.
- 2) After copying the file, restart your Macintosh.
- 3) After your Macintosh has restarted, plug the USB FDD into the USB port of your Macintosh.

To perform a manual uninstallation, please use an Extensions manager and stop the driver files “YE USB-FDU” and “YE USB-FDU Shim” in a System Folder.

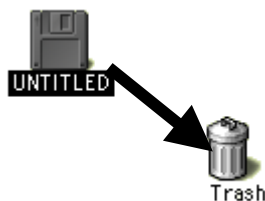
3.3. Operating & Connecting the USB FDD

- 1) Insert a Floppy Diskette.

Insert a formatted floppy diskette into the USB FDD. A floppy diskette icon will appear on the desktop of your Macintosh. If the diskette has not been formatted yet, an initialize dialog box will appear instead.

2) **Ejecting a Floppy Diskette (IMPORTANT)**

Drag the floppy diskette icon to the trash-can. Or single click the floppy diskette icon and select [Eject] from the Finder [Special] menu.



Note: If the floppy diskette is removed from the USB FDD unexpectedly, the operating system may become unstable, and the diskette contents may be damaged.

Do not remove the floppy diskette except as outlined above! If the floppy diskette is removed from the USB FDD by mistake, be sure to insert the same diskette back into the USB FDD immediately!

3) Connecting the USB FDD

The USB FDD is designed for Hot-Plug. You may plug in the USB FDD at any time.

4) Disconnecting the USB FDD

Before you unplug the USB FDD, be sure that any floppy diskettes have been ejected as outlined in step 2) above.

Do not unplug the USB FDD during sleep mode. If sleep mode does not seem to work correctly, try unplugging the USB FDD before entering sleep mode.

3.4. Restrictions

- 1) 2DD 800KB Mac format diskettes are not supported.
- 2) ProDos (Apple-II) format is not supported. Do not select this menu on the initialize dialog box.
- 3) There is no function for Auto-Eject. The floppy diskette must be ejected manually.
- 4) You cannot start up the Macintosh from the USB FDD.
- 5) This driver is designed only for use with this USB FDD. It cannot be used for other USB-FDD devices.
- 6) Some application programs use more than one installation floppy diskette. Application installers sometimes require the use of the auto-eject feature to switch diskettes. In such cases, the diskette change mechanisms will not work with the USB FDD.
- 7) Floppy diskettes formatted manually to avoid illegal duplication cannot be installed. Some CD-ROM software may have these types of floppy diskettes.

- 8) Be sure to use a self-powered USB hub with AC adapter, if you use a USB hub.
- 9) Do not connect the USB FDD to the USB port on the keyboard.
- 10) Reset your Macintosh, if your Macintosh freezes or hangs up.
- 11) The USB FDD is a precision machine adjusted by the manufacturer. Do not drop, strike, shock, or crush the USB FDD; otherwise the USB FDD may break.
- 12) When in sleep mode, do not remove the floppy diskette from the USB FDD or unplug the USB FDD from your Macintosh. If you do, the Macintosh will prompt you to put back the floppy diskette or plug in the USB FDD, when it wakes up from sleep mode. Your Macintosh will continue to prompt it until you put back the floppy diskette or plug the USB FDD back in.

Insert the same diskette in the USB FDD as the one you had removed during sleep mode, when prompted by the Macintosh. Do not insert a different diskette, as it will become corrupted.

We strongly recommend to eject any floppy diskette, as described in section 2.3 above, and then unplug the USB FDD, before entering sleep mode. This is the best way to protect the data on your diskettes.

3.5. PACE Anti-Piracy's USB Floppy Enabler

This USB FDD and driver supports PACE Anti-Piracy's USB Floppy Enabler Ver 2.0 or later. The USB Floppy Enabler is a special driver needed to install software that uses diskette-based copy protection or key diskettes. Please refer to PACE Anti-Piracy web site at <http://www.paceap.com> for more information.

Follow this procedure to install the PACE USB Floppy Enabler.

- 1) Install the USB FDD driver from the driver CD-ROM if you have not yet done so.
Install the USB FDD driver, even if you have been using the built-in Mac OS driver.
- 2) Insert the USB FDD driver CD-ROM into your Macintosh.
- 3) Open the PACE ANTI-PIRACY folder.
- 4) Double click the USB Floppy Enabler Installer icon to begin installation.

Note: If you boot your Macintosh while a diskette is inserted in the USB FDD, the USB Floppy Enabler will not recognize the USB FDD, and a warning message will appear on the screen. If this happen, drag the diskette icon on your desktop to the trash, eject the diskette from the USB FDD, and then reinsert the diskette.

Note: When you don't use a software protected by PACE Interlok, for example, you may disable the USB Floppy Enabler using the Control Panel Extension Manager.

Note: The standard "USB Mass Storage Support" driver that is built in to Mac OS 9.x does not support PACE Anti-Piracy's USB Floppy Enabler.

4. Windows XP

4.1. Installation

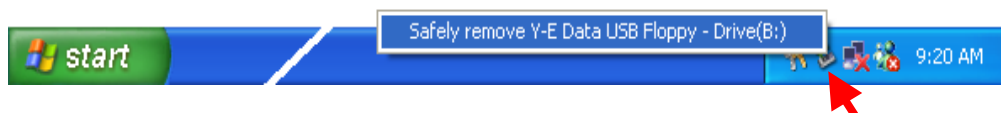
The USB FDD works with the Windows XP standard built-in driver made by Microsoft Corporation. Therefore, no additional driver is necessary.

- 1) Start up Windows XP.
- 2) Plug your USB FDD to your PC. Windows XP will detect the USB FDD and install the necessary driver files automatically.
- 3) A new 3½ Floppy disk icon will appear in the “My Computer” folder. In the figure below, the USB FDD can be accessed as Floppy drive B:. Floppy drive A: below is the built-in floppy drive of your PC. If your PC is a kind of “legacy free” PC, the USB FDD will work as Drive A:.



4.2. How to Unplug the USB Cable

- 1) Click Eject Icon on the taskbar and click the “Safely remove USB Floppy” message.



- 2) Unplug the USB cable.

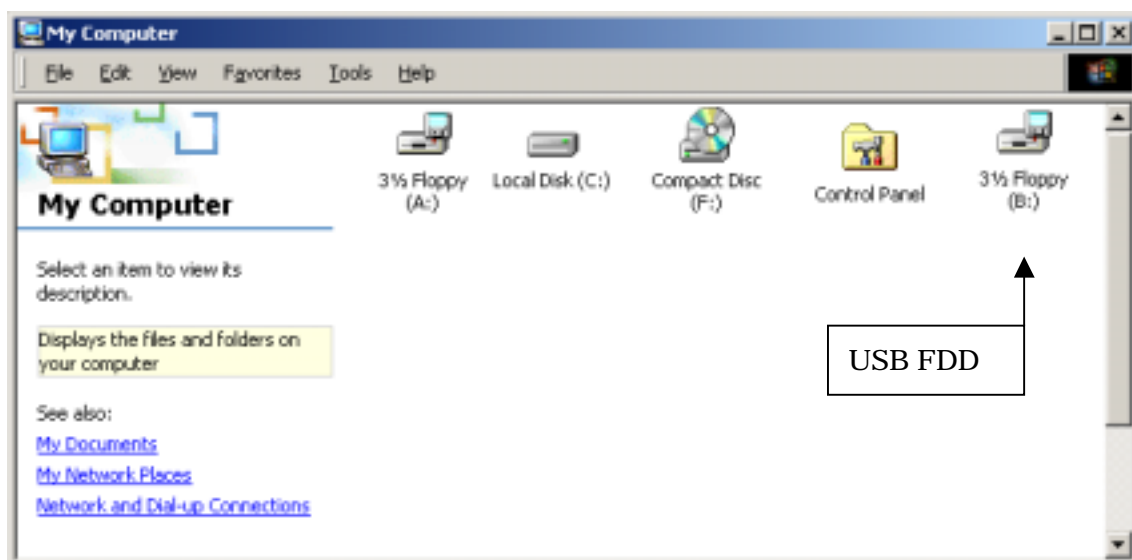


5. Windows 2000

5.1. Installation

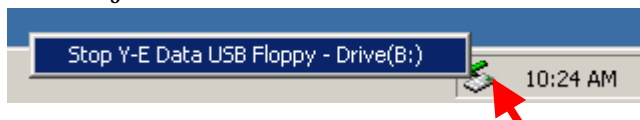
The USB FDD works with the Windows 2000 standard built-in driver made by Microsoft Corporation. Therefore, no additional driver is necessary.

- 1) Start up Windows 2000.
- 2) Plug your USB FDD to your PC. Windows 2000 will detect the USB FDD and install the necessary driver files automatically.
- 3) A new 3½ Floppy disk icon will appear in the “My Computer” folder. In the figure below, the USB FDD can be accessed as Floppy drive B:. Floppy drive A: below is the built-in floppy drive of your PC. If your PC is a kind of “legacy free” PC, the USB FDD will work as Drive A:.



5.2. How to Unplug the USB Cable

- 1) Click Eject Icon on the taskbar and click the “Stop USB Floppy” message.



- 2) Click OK and then unplug the USB cable.

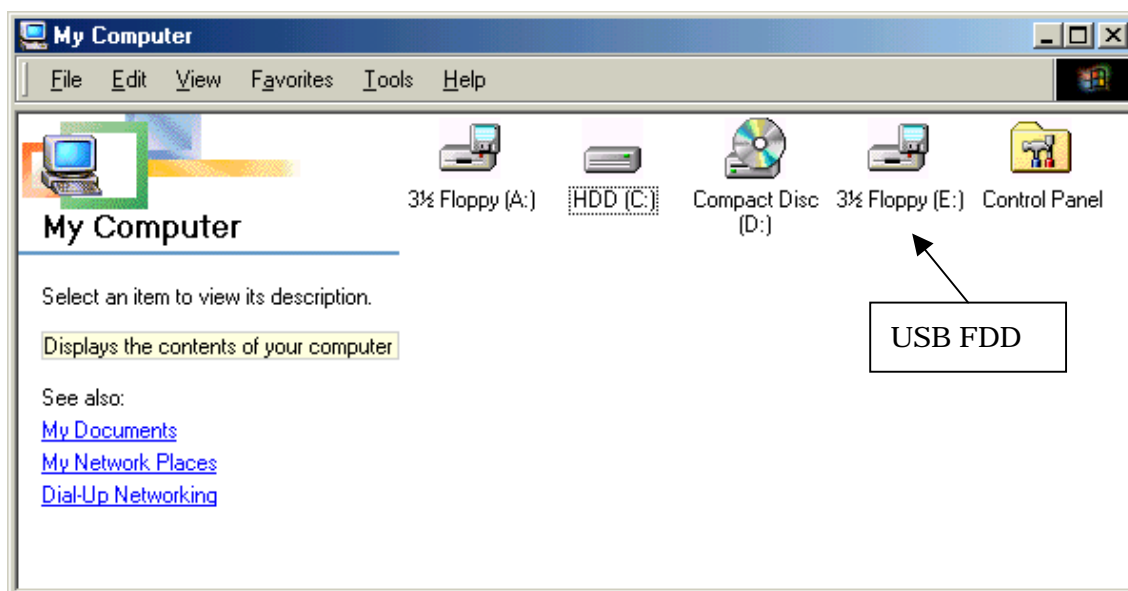


6. Windows Millennium Edition (Me)

6.1. Installation

The USB FDD works with the Windows Me standard built-in driver made by Microsoft Corporation. Therefore, no additional driver is necessary.

- 1) Start up Windows Me.
- 2) Plug your USB FDD to your PC. Windows Me will detect the USB FDD and install the necessary driver files automatically.
- 3) A new 3½ Floppy disk icon will appear in the “My Computer” folder. In the figure below, the USB FDD can be accessed as Floppy drive E:. Floppy drive A: below is the built-in floppy drive of your PC. If your PC is a kind of “legacy free” PC, the USB FDD will work as Drive A:.

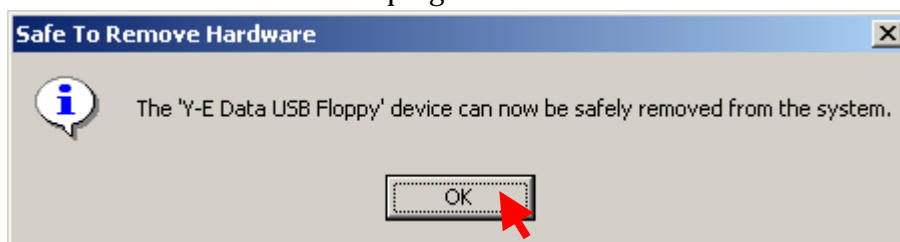


6.2. How to Unplug the USB Cable

- 1) Click Eject Icon on the taskbar and click the “Stop USB Floppy” message.



- 2) Click OK button and then unplug the USB cable.

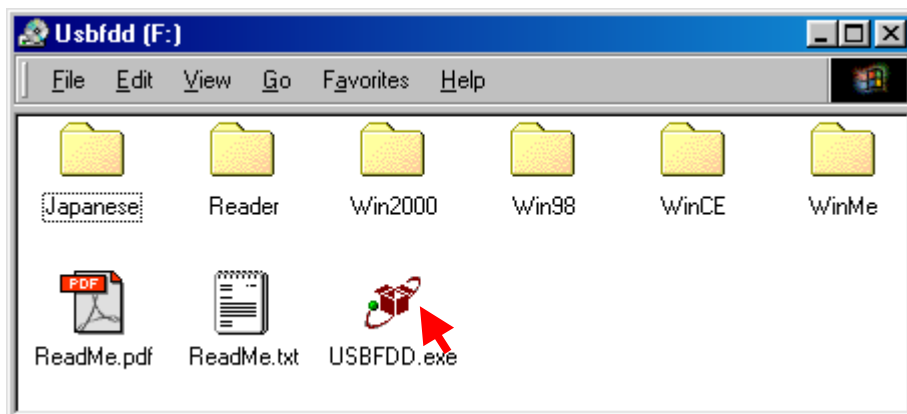


7. Windows 98 and Windows 98 Second Edition

7.1. USB FDD Driver Installation

Note: Some new computers have a special version of the USB FDD driver already installed. In this case, do not install the USB FDD driver from the driver CD-ROM.

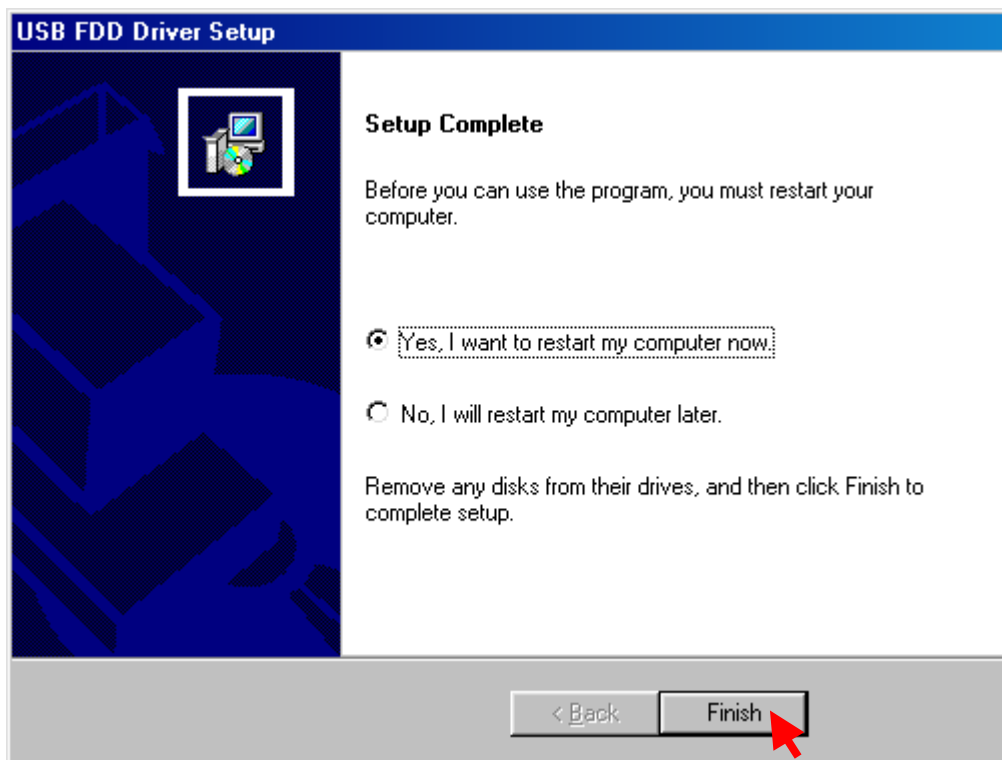
- 1) Boot up Windows 98.
- 2) Insert the USB FDD driver CD-ROM into the CD-ROM drive.
- 3) Run "USBFDD.exe" to install the driver software.



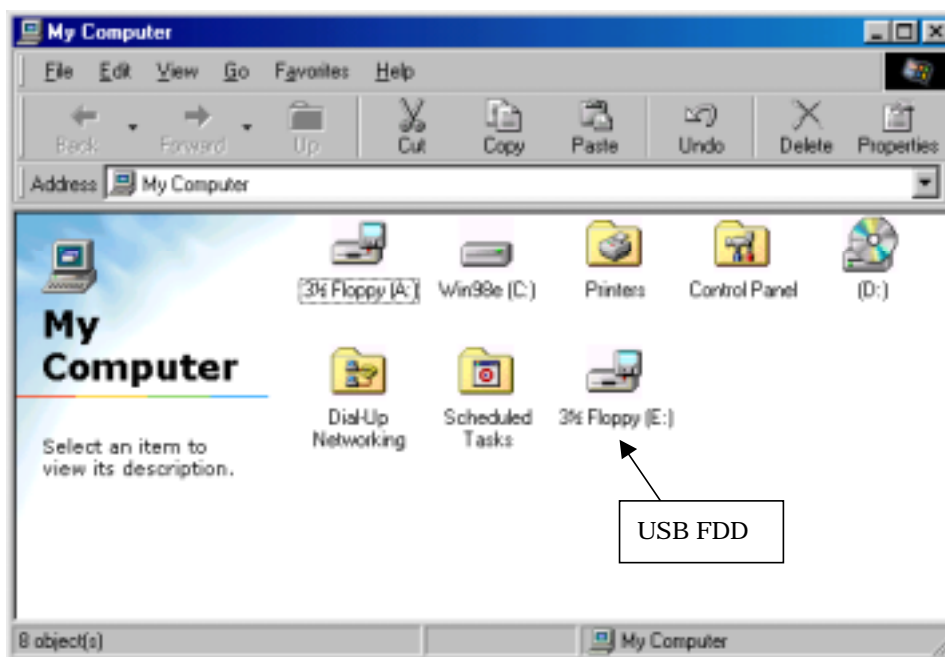
- 4) Click **Next >** button to start an installation of the driver files.



- 5) Click the **Finish** button to complete the installation. Windows will restart your computer with in a few seconds.



- 6) After re-start the Windows, plug your USB FDD to your PC. Windows will detect the USB FDD automatically. A new 3½ Floppy disk icon will appear in the “My Computer” folder. In the figure below, the USB FDD can be accessed as Floppy drive E:. Floppy drive A: below is the built-in floppy drive of your PC.

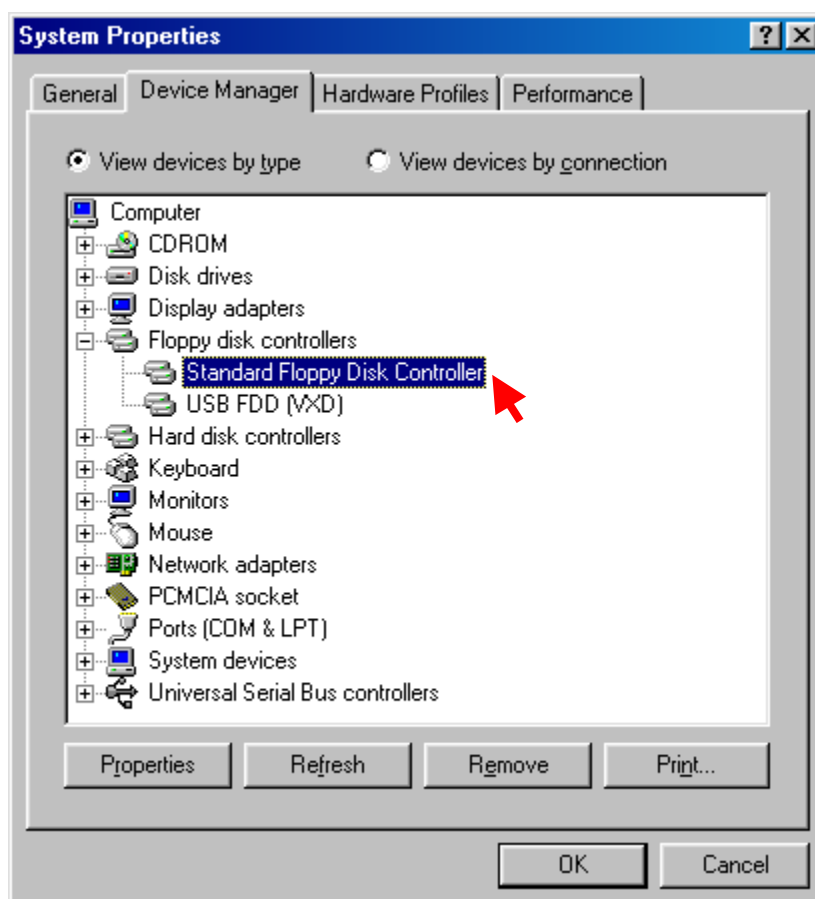


7.2. Optional setting to use USB FDD as drive letter A:

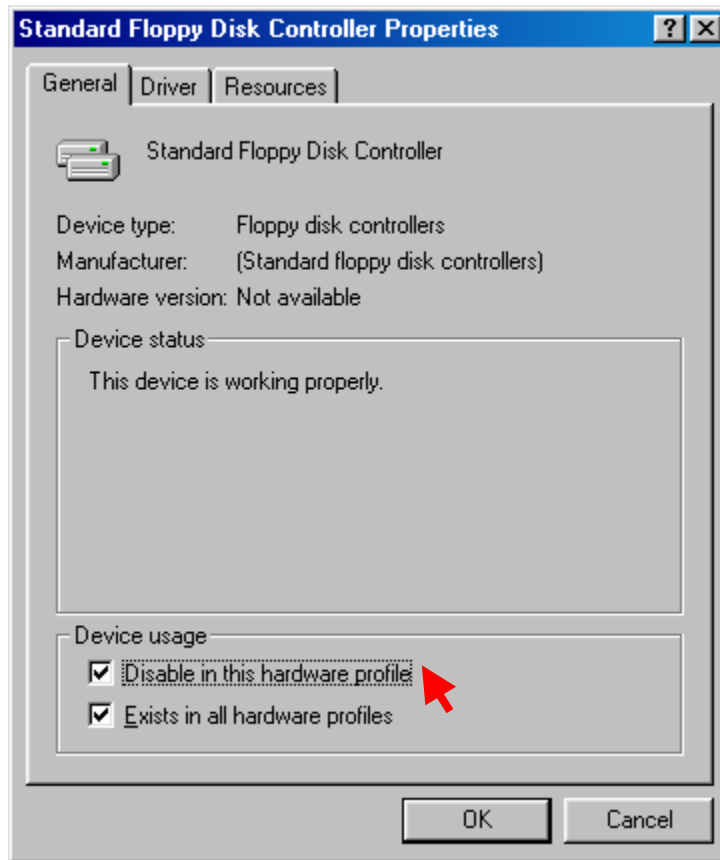
If you want use USB FDD as Drive letter A:, disable the Standard Floppy Disk Controller. This is an optional setting for power user and we could not guarantee all of the PC. If your PC does not work correctly, please set back the original setting.

Note: If you disable the Standard Floppy Disk Controller, you could not access legacy FDD. If you need to take a legacy FDD, do not disable the Standard Floppy Disk Controller.

- 1) Double click the “System” icon on the control panel.
- 2) Select Standard Floppy Disk Controller and click **Properties** button in the Device Manager Tab.



- 3) Check "Disable in this hardware profile" and click OK button.



- 4) After re-start your computer, USB FDD will work as drive letter A:.

8. Restrictions Windows 98, Windows Me, Windows 2000 and Windows XP

1) USB Hub

If you plug the USB FDD into a USB hub, be sure to use a self-powered hub that includes an AC adapter. Do not use bus-powered hubs, such as the USB port on a keyboard. Bus-powered hubs do not supply enough power to operate the USB FDD.

2) Booting

You cannot boot your computer from the USB FDD, unless your computer includes a special BIOS that supports this feature. Some recent notebook computers support booting from the USB FDD. For more details, please contact your distributor.

3) Virus Scan Soft

Some virus detect softwares assume a built-in floppy disk drive. When using such a software, the operating system may become slow or unstable.

4) Standby

The USB FDD supports the standby mode of Windows 98 according to the PC99 Standard. However, if standby mode does not seem to work correctly, try unplugging the USB FDD before entering standby.

5) Alternate Driver for Windows Me

We recommend to take a standard built-in driver made by Microsoft corporation, but if you want use the USB FDD as drive letter A: with non legacy free PC, you can take a vender driver.

The way to install the vender driver is same as Windows 98 section (page 12). The USBFDD.exe automatically detects Windows Version and will install the Driver for Windows Me.

6) Initialization (Format) of a floppy disk on Windows XP

Windows XP allows you to format (initialize) a floppy diskette only as 1.44MB media.

9. Windows CE

9.1. Installing with the Windows CE Service

When using the USB FDD with a Handheld PC, the driver software needs to be installed before connecting the USB FDD. Do not connect the USB FDD to your Handheld PC until you have installed the USB FDD driver software.

Lots of Handheld PCs have a pre-installed USB FDD driver. In this case, it is not necessary to install a driver software.

To check whether a driver for USB FDD is installed or not, please refer to your Handheld PC manual

If the driver is not pre-installed, a following message is displayed on the screen when connecting a USB FDD to Handheld PC. So, please click X button and install the driver.



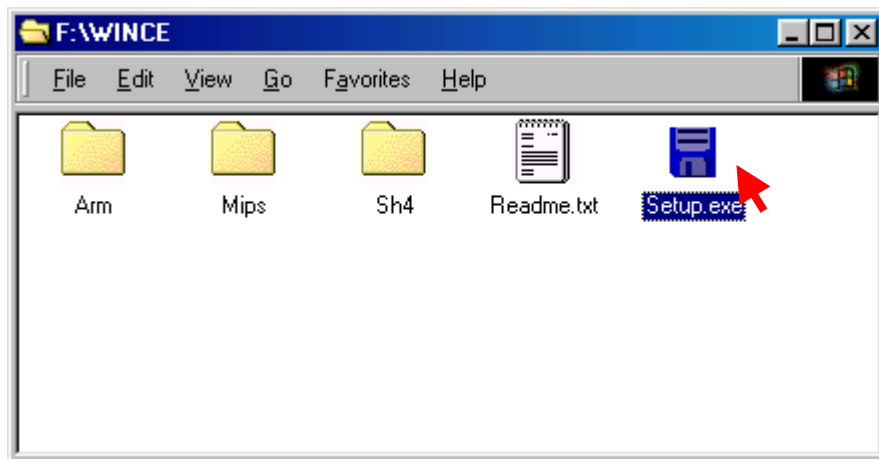
For the installation of a driver, we have 2 methods as follows.

- The way to connect a Handheld PC to a host Windows PC with the Windows CE Service software and a cable.
- The way to download a driver software via an Internet connection by dial-up from Handheld PC.

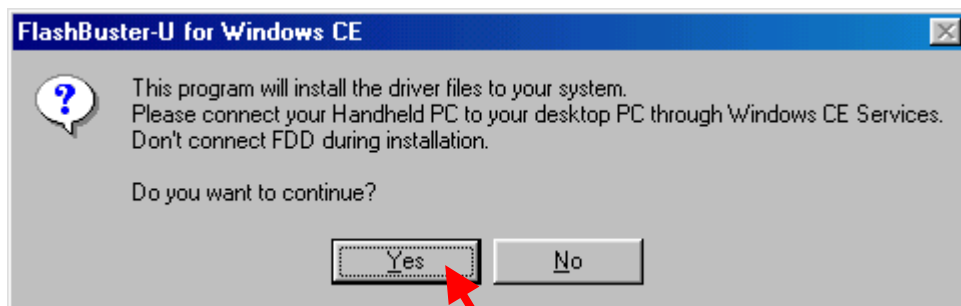
The procedure below describes how to install the USB FDD drivers on your Handheld PC from a Host Windows PC. To do this, you will need to connect your Handheld PC to the Host Windows PC with the Windows CE service software and a cable. Please refer to your Handheld PC manual about how to connect your handheld to the host.

- 1) Establish a partnership to transfer files from the Host Windows PC to your Handheld PC.
- 2) Insert the USB FDD driver CD-ROM in the CD-ROM drive of the Host Windows PC.

- 3) On the Host Windows PC, double click the CD-ROM icon in the “My Computer” folder.
- 4) Double click the WINCE folder in the CD-ROM , and then double click the Setup icon to start the Setup program.

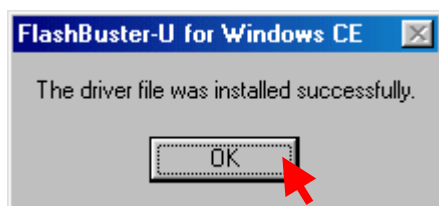


- 5) When the “FlashBuster-U for Windows CE” dialog box appears, click the YES button.



- 6) The Setup program installs the USB FDD driver software on your Handheld PC. Please wait for a while, as it takes a few minutes to install it.

When the installation is completed normally, the following dialog box will appear. Click the OK button to terminate this program.



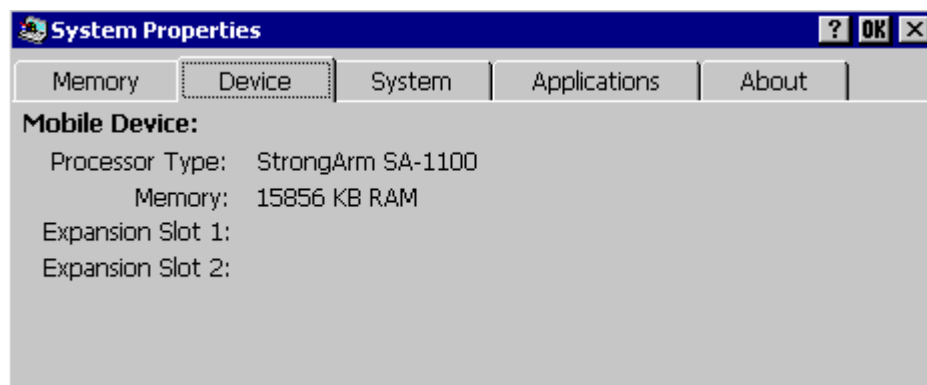
- 7) Plug the USB FDD into the USB port of your Handheld PC.
8) If you insert a formatted diskette in the USB FDD, the diskette can be accessed as “Storage Card” in the “My Handheld PC” folder.

Note: the “Storage Card” folder will not appear unless a formatted diskette is inserted in the USB FDD.

9.2. To install using an Internet connection directly to your Handheld PC:

Even if you have no Windows PC, you can download the driver file from Internet connection, or copy the file from driver CD-ROM to your Handheld PC with using such as a memory card.

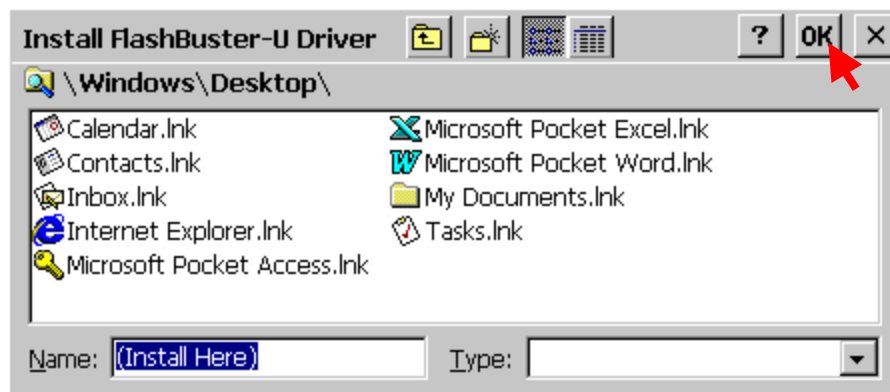
- 1) Check what kind of processor is built into your Handheld PC: ARM, MIPS or SH4. To check the processor type, open the **Control Panel**, double click the **System** icon, then click the **Device** tab. And note the **Processor Type**, as shown below (in this case, the Processor Type is ARM).



- 2) Download the appropriate software for your handheld PC based on the Processor Type. Or copy a file from CD-ROM taking a Memory Card to your handheld PC.

Processor	Location of Internet	Driver CD-ROM
ARM	http://www.yedata.com/support/fbu_arm.cab	ARM Folder fbu_arm.cab
MIPS	http://www.yedata.com/support/fbu_mips.cab	MIPS Folder fbu_mips.cab
SH4	http://www.yedata.com/support/fbu_sh4.cab	SH4 Folder fbu_sh4.cab

- 3) Double click the downloaded file; the driver for USB FDD will install automatically. The installer will ask where to install the USBFDD.txt file; please click OK to install. After the install has finished, you can find USBFDD.txt on the Desktop; please read this file.



- 4) Connect the USB FDD to your handheld PC and insert a formatted diskette into the USB FDD. The diskette can be accessed as the "Storage Card" folder by double clicking on the "My Handheld PC" icon. The computer will address the floppy disk as if it were a memory card, because that is the usual means of storage for a handheld PC.

9.3. Restrictions

- 1) "Storage Card" folder

The "Storage Card" folder will not appear if you merely plug in the USB FDD. The "Storage Card" folder will only appear after you have inserted a formatted diskette.

- 2) Formatting a Diskette

There is a format utility program, USBFDFMT, in the Windows folder of your Handheld PC. If you insert an unformatted diskette in the USB FDD, USBFDFMT will run automatically.

- 3) Access Speed

Accessing the floppy is not so fast. Writing large files will take several minutes when running Windows CE 2.11.

- 4) USB Hub

Windows CE 2.11 does not support a USB hub between the Handheld PC and the USB FDD. Plug the USB FDD directly in the USB port of your Handheld PC.

- 5) Suspend

The USB FDD supports suspend mode. However, if suspend mode does not seem to work correctly, try unplugging the USB FDD before entering suspend.

10. Specifications

10.1. Temperature Range

Operating	: 5~40°C (41~104°F)
Non-operating	: -40~60°C (-40~140°F)

10.2. Humidity Range

20~80% RH, no condensation

10.3. Operating Position

Horizontal (eject button above diskette slot)

10.4. Supported Diskette Types (3.5 inch)

Diskette	Format	Support	Note
2HD	1.44 MB PC format	Read / Write / Format	
	1.4 MB Mac format	Read / Write / Format	Macintosh Only
	1.7MB Microsoft DMF	Read Only	Windows Only
	1.25 MB DOS Format	Read / Write	Windows Only
	1.21 MB DOS Format	Read / Write	Windows Only
2DD	720 KB PC Format	Read / Write / Format	
	800 KB Mac Format	Not supported	
	640 KB DOS Format	Read / Write	Windows Only

Note:

1. DOS Format 1.25M / 1.21M / 640K are Japanese domestic MS-DOS versions.
2. Mac Format 2DD diskettes are not supported.
3. Windows XP allows you to format (initialize) a floppy diskette only as 1.44MB media
4. Diskettes formatted by Mac OS X cannot be recognized by other versions of Mac OS. We recommend that you format diskettes using Mac OS 9.x or 8.x.

11. Support

11.1. Contact Your Dealer

For any support issue, please contact first your official Lacie dealer.

11.2. Contact Lacie

Lacie Web-Support address: <http://www.lacie.com/support>