

After Dark 3.0

Quick Reference Guide



Welcome to After Dark 3.0, the weirdest, wildest and wackiest screen saver ever! It's the latest screen saver collection from Berkeley Systems. A screen saver is a fun way to protect your monitor from screen phosphor damage by presenting an animated screen-saving display whenever your system has been inactive for a period of time.

This Quick Reference Guide contains all the information you need to install After Dark and get familiar with it's features. To learn more about a specific feature or operation, please refer to the electronic file called "After Dark Online Manual" located in the After Dark 3.0 folder on your hard drive. For general Macintosh questions, please consult your Macintosh User's Guide.

EASY INSTALLATION:

Easy Install puts all of After Dark's required files in their proper locations and updates any other Berkeley Systems screen savers you own. To install After Dark, follow these step-by-step instructions:

1. Insert Disk 1.
2. Double-click on the **Double-Click Me to Install** icon. A screen appears with information about After Dark.
3. Select **Continue**. The Install screen appears.
4. Select **Install**.
5. In the personalization dialog box, type in:
 - a. Your name
 - b. Organization (optional)
 - c. Serial number exactly as it appears on your registration card.
6. Select **OK**.

Follow the on-screen directions and insert the remaining disks when prompted. When installation is complete, the installer prompts you to restart your system. Don't forget to fill out your registration card.

Note: After Dark 3.0 automatically replaces older versions of After Dark. The modules from After Dark 2.0 are put in a folder named After Dark 2.0, inside the After Dark Files folder. If you own other Berkeley Systems screen saver packages, modules from those packages are also put inside folders within the After Dark Files folder.

What's new about 3.0:

- 15 brand new displays
- EcoLogic™ Power Manager
- Module Folders and Icons
- WallZapper™
- Enhanced Password Protection.
- New Randomizer & MultiModule
- Sleep Hot Key

TERMS TO KNOW:

After Dark control panel - Controls After Dark, its configuration, modules, and sleeping time.

modules - The individual screen displays such as Flying Toasters.

After Dark Files folder - Where you will find all modules and support files.

module folder - Any folder inside the After Dark Files folder that contains at least one module.

sleep - After Dark senses when your computer is idle, and displays the selected module (After Dark's default module is Starry Night).

Where is After Dark located?

Your system software version determines where the Installer puts After Dark and how you access it.

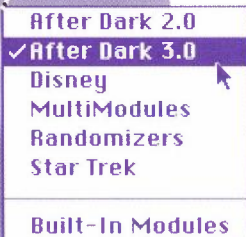
System 6: System Folder

(To access After Dark, open the System Folder, and click on After Dark 3.0)

System 7: Control Panels folder

The Installer also puts an alias to After Dark in your Apple menu. (To access After Dark, either, select After Dark 3.0 from the Apple menu, or select Control Panels from the Apple menu, then open After Dark 3.0.)

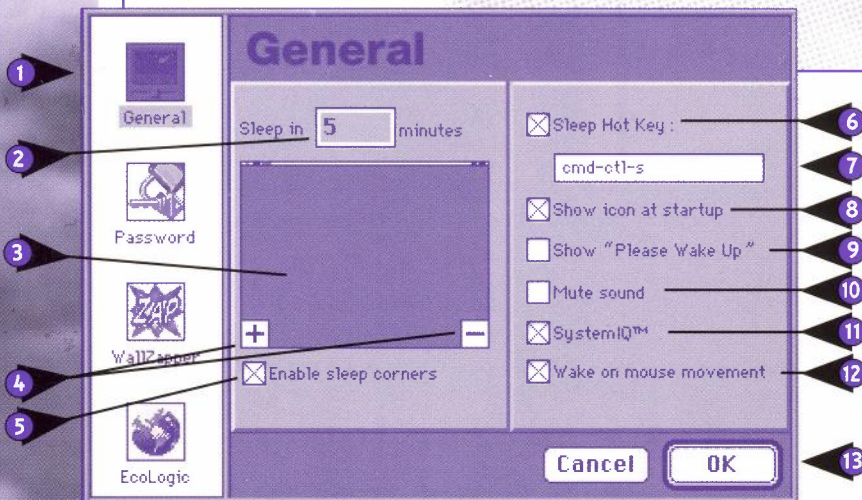
The After Dark control panel allows you to choose which module will be displayed when your screen falls asleep, change a module's settings, or see credit and help information. You can also configure After Dark's sleep time and other features by clicking the Setup button.



1. To see credits & version info, click here.
2. This is the module folder pop-up menu. If you have another module collection, such as the Disney™ Collection Screen Saver, click here to select it. You can also press **Command-Up Arrow** or **Command-Down Arrow** to select module folders.
3. Click a module's name to select it. The currently selected module's name is highlighted. You can also type the first few letters of the module name to select a module.
4. This is a thumbnail of the selected module. If one is unavailable, you'll see a generic After Dark icon.
5. This turns After Dark off or on. If After Dark is turned off, screen saving will not occur until After Dark is turned on again.
6. To customize After Dark features such as password and EcoLogic, click here. You can also select **Setup** from the File menu or press **Command-S**.
7. Change module settings here.
8. Click the arrows of the speaker icon to turn the volume up or down for the selected module.
9. This lets you preview the currently selected module and change settings while it's running. You can also select **Demo** from the File menu or press **Command-D**.
10. To see more info on a module and its controls, click here.

Click **Setup** from the After Dark Control Panel to access the General dialog box. You can also select **Setup** from the **File Menu**, or press **Command-S**.

The General dialog box controls After Dark's sleep time, Hot Key, Sleep Corners, System IQ™ and several other features. Sleep time is how long After Dark waits since your Mac was last used before putting your screen to sleep. You can also put After Dark to sleep instantly using the Sleep Corner feature or with the Hot Key combination.

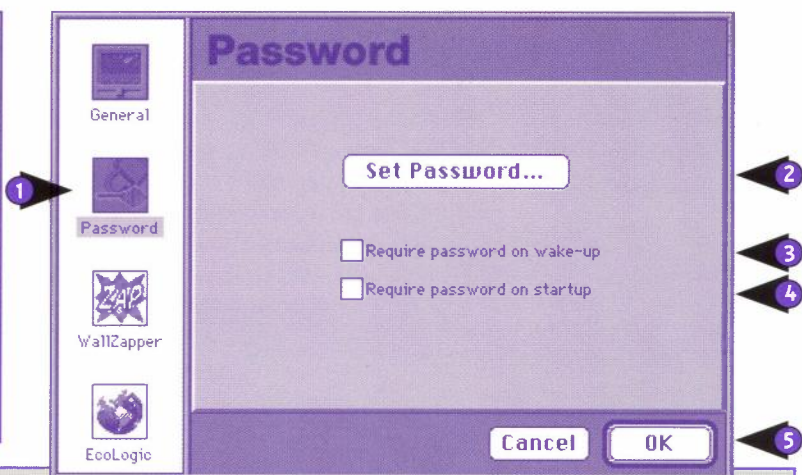


1. Click the **General** icon to access After Dark features such as Sleep time and SystemIQ™.
2. After Dark puts your screen to sleep after your computer has been idle for this many minutes. Change the time by typing in a new number.
3. This is a representation of your actual screen. The + symbol represents the Sleep Now corner. You can put the screen to sleep instantly by moving the mouse into this corner on your actual screen. The - symbol represents the Never Sleep corner. You can prevent After Dark from sleeping by leaving your cursor in the Never Sleep corner on your actual screen.
4. Change the positions of the Sleep Now + and Never Sleep - corners by moving these symbols to different corners on the representative screen.
5. Check this box to enable the sleep corners feature.
6. Check this box to turn on the Hot Key feature. The Hot Key allows you to put After Dark to sleep with the key combination below it.
7. This Hot Key combination will put After Dark to sleep immediately. To change the keys, click in the field then type the new keys in the box.
8. Check this box to make After Dark display its icon during startup.
9. After Dark will display a "Please Wake Up" message above the module if another program (such as the Alarm Clock) is trying to get your attention. Uncheck this box if you don't want to see the message.
10. Check this box to prevent After Dark from playing any music or sound.
11. Check this box to turn on SystemIQ™, which makes After Dark more sensitive to system activity. (eg. won't sleep during print jobs.)
12. With this checkbox selected, moving the mouse will wake up After Dark. (Uncheck this box to prevent the mouse from waking up After Dark.)
13. Click **OK** to save your changes. Click **Cancel** to close Setup without saving any changes.

PASSWORD

The Password setup panel allows you to change After Dark's security features. After Dark can protect your system with a password you choose. When After Dark sleeps with password protection on, you can access your system only if you type in the correct password.

If you forgot your password, relax and check the Troubleshooting section for the solution.

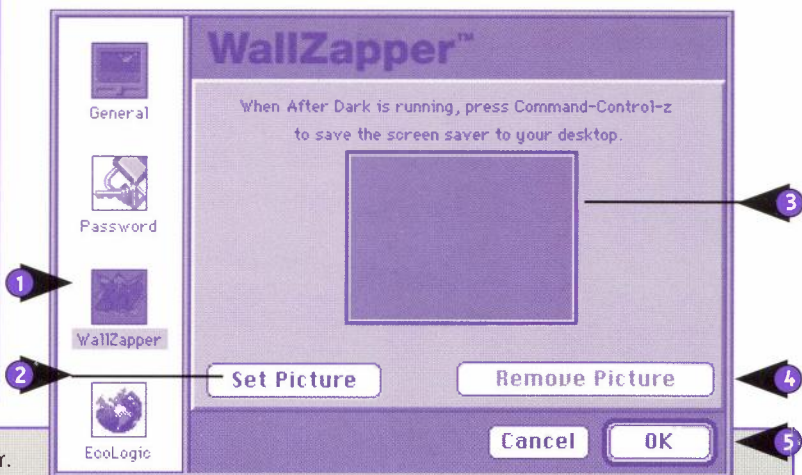


1. Click here to set After Dark's security features.
2. Click **Set Password** to create a new password or change your old one. A series of screens will appear, just follow the onscreen instructions.
3. Check this box to make After Dark always require a password before it wakes up.
4. Check this box to make After Dark require a password every time your computer starts up.
5. Click **OK** to save your changes or click **Cancel** to exit without saving.

WALLZAPPER

WallZapper™ enables you to turn your favorite screen saver display into desktop art! Just press **Command-Control-Z** when After Dark is running. It may take a moment to create the Screen Poster depending on the speed of your Mac and monitor configuration.

You can also use any PICT file as your Screen Poster, just follow the instructions below.

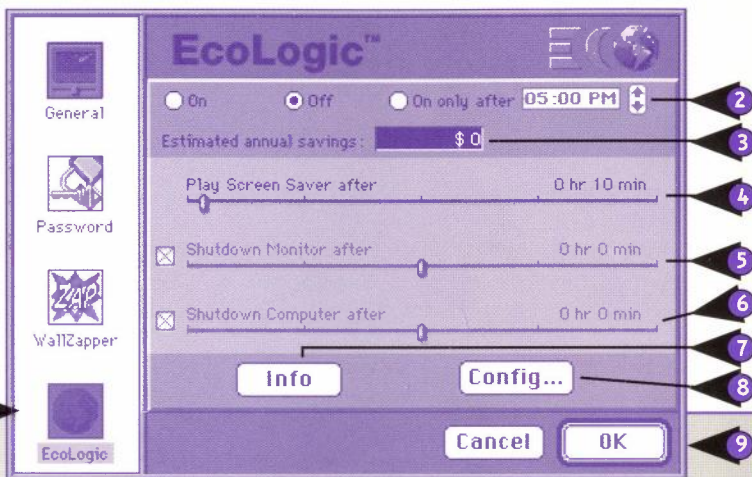


1. Click here to configure WallZapper.
2. Click **Set Picture** to display any PICT file as your desktop screen. A standard file dialog box will appear. Locate the picture you want to use on your hard drive and click **Open**.
3. This is what your monitor will look like with the selected picture. If you have more than one monitor, you can click on each one and select a different picture for each.
4. Click **Remove Picture** to remove the picture from your monitor.
5. Click **OK** to save your changes or click **Cancel** to exit without saving.

ECOLOGIC

EcoLogic™ is After Dark 3.0's power manager. EcoLogic has options to reduce your computer's power consumption in three stages: running a regular After Dark module; powering off your monitor; and shutting off your computer.

Once EcoLogic engages, it briefly displays a countdown timer before shutting down your Energy Star™ compliant monitor (non-Energy Star monitors go black). After Dark will not shut down your computer if you have documents open with unsaved work.



1. Click the **EcoLogic** icon to access After Dark's energy saving features.
2. You can turn EcoLogic **On** or **Off** with these buttons. With EcoLogic turned off, the screen saver will run normally and your monitor will not power off. If you select **On only after**, EcoLogic will only be active after the time you set in the box. Change the time by clicking the up and down arrows.
3. This box displays your estimated annual savings based on EcoLogic's current settings.
4. This slider determines when After Dark will go to sleep (this will change the Sleep Time in the General setup panel).
5. Check this box to shut down your monitor after a period of idle time. Move the slider to change the

amount of time After Dark displays a module before shutting down your monitor.

6. Check this box to shut down your computer after a period of idle time. Move the slider to change the amount of time After Dark waits before shutting down your computer.
7. Click the **Info** button for information on how EcoLogic calculates your savings.
8. Click the **Config** button to customize EcoLogic for your system and the electricity costs in your area.
9. Click **OK** to save your changes or click **Cancel** to exit without saving.

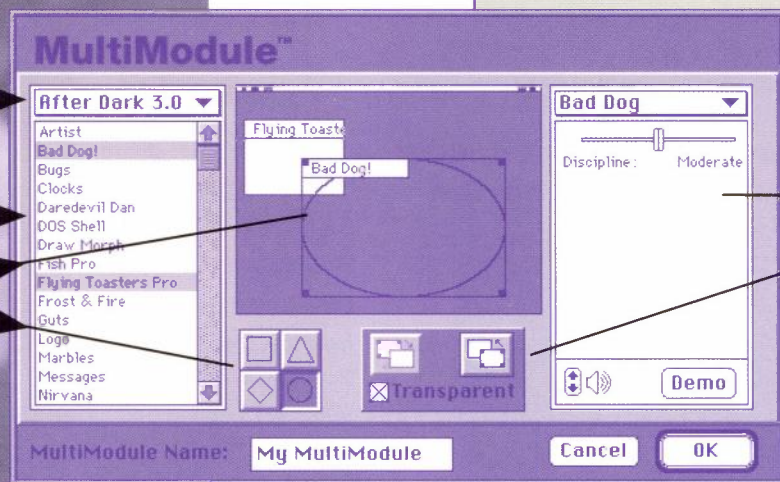
COPYRIGHTS & CREDITS

After Dark® 3.0 Screen Saver Software © 1990-94 Berkeley Systems, Inc. All Rights Reserved. **After Dark Screen Saver Documentation** © 1994 Berkeley Systems, Inc. All Rights Reserved. **Written** by Alyce Korn, Jim Tso, and Kermit Hylen. **Cover Art & Layout** by Brian Dougherty. Apple, the Apple logo, and Macintosh are trademarks of Apple Computer, Inc., registered in the U.S. and other countries. **Sound & Music Drivers, Original Music, and Studio** by Halestorm, Inc. All **Arrangements** by Peter Drescher. **Music Engineering:** Chris Perry. **Technical Director:** Steve Hales. **"The Ride of the Valkyries"** from the opera Die Walküre. Music by Richard Wagner. **"William Tell Overture"** from the opera William Tell. Music by Gioacchino Rossini. **"On Mighty Toaster Wings,"** Music and lyrics by Nick Rush.

MultiModule allows you to combine several modules into one display, side-by-side or overlapping, in any size or position you like. Once you create a MultiModule, you can save it and After Dark shows it in the list within the MultiModule folder.

To create your first MultiModule, select MultiModules from the module folder pop-up menu. Then click the **New** button. You can also select **MultiModule** from the **File** menu or press **Command-M**.

1. Select **After Dark 3.0** from this module folder pop-up menu. You can select any folder package you want.
2. Select **Flying Toasters** first. You'll see a small rectangle with the Flying Toaster name in it. This represents the size, shape and position of Flying Toasters on your real screen. Next select **Bad Dog** from the module list. You'll see a rectangle with the Bad Dog name in it.
3. You can move the **Bad Dog** rectangle around the sample screen by clicking the name and dragging it around. You can resize the module by dragging on one of the corner points. Try dragging one of **Bad Dog's** corner points to enlarge the rectangle.
4. You can change the shape of the selected module by clicking one of these shapes: rectangle; triangle; diamond; and circle. Try changing Bad Dog's region to a circle.
5. This pop-up menu lists the modules you have selected for this MultiModule setting. Choose any one to see its controls.
6. You can adjust the controls for the currently selected module from here. Changing the controls here will not affect the module's settings in the main control panel.



7. Click on one of the squares to bring the currently selected module to the front or back. If you click the **Transparent** checkbox, you will be able to see other modules underneath the currently selected module.
8. Click **demo** to preview your MultiModule creation. The speaker controls the sound volume for all the selected modules in this MultiModule.
9. Type in an unique name for your MultiModule. It will show

up in the module list whenever you select MultiModules from the module folder pop-up menu.

10. Click **OK** to save your changes or click **Cancel** to exit without saving.

LICENSE AGREEMENT

Berkeley Systems, Inc. grants you a nonexclusive, nontransferable license to use After Dark® 3.0 (the "Program") on one computer. You may install one copy of the Program onto the hard disk of one computer, and you may make one copy of the Program disk for backup purposes. These copies must include the After Dark 3.0 copyright notice.

The After Dark® 3.0 Program, including its graphics displays and its related documentation, are copyrighted. You may not: rent, distribute or transfer copies of the Program or documentation to others; modify, reverse engineer, disassemble, decompile, or translate the Program or documentation; make any copies of After Dark 3.0 modules for use with programs; or use the Program on more than one terminal of a network, on a multi-user computer, on a time-

sharing system, on a service bureau, or on any other system on which the Program could be used by more than one person at a time.

This license is effective until terminated. You may terminate it at any time by destroying all copies of the Program. It will also terminate automatically if you fail to comply with any of the terms and conditions of this Agreement.

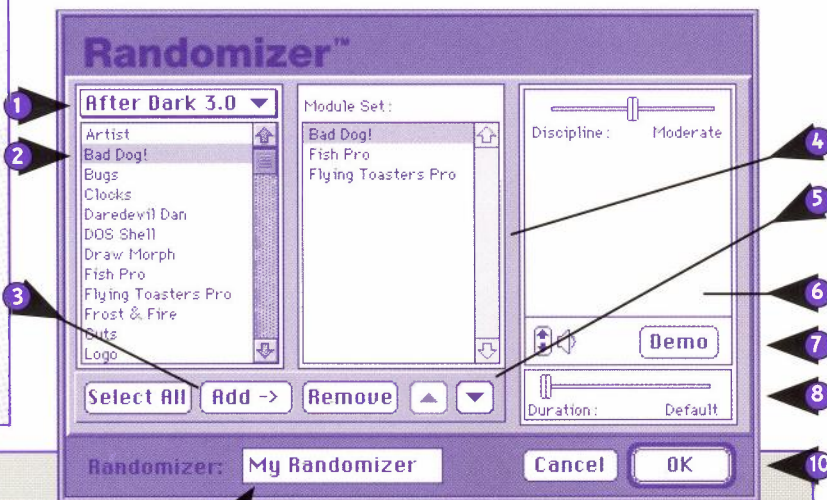
This Agreement constitutes the entire agreement and understanding between the parties and supersedes any prior agreements, representations, or understandings, whether oral or written, relating to the Program.

This Agreement shall be governed by the laws of the State of California.

RANDOMIZER

Can't decide which module to use? Don't worry, with Randomizer you can use all your favorite modules. Just select your favorites and Randomizer will display them in order or randomly. You can also decide how long each module is displayed.

To create your first Randomizer setting, select Randomizers from the module folder pop-up menu. Then click the **New** button. You can also select **Randomizer** from the **File** menu or press **Command-R**.



1. Select **After Dark 3.0** from this module folder pop-up menu. Use this menu to select modules from other sets.
2. Double-click the modules you want in your Randomizer or click once and then click **Add ->**. You can select the same module more than once to make it appear more frequently than others.
3. You can click the **Select All** button to select all the modules in a folder. Click the **Add->** button to add them all.
4. This list shows you the order in which the modules will be displayed if you choose **In Order** from the Randomizer module controls.
5. Click **Remove** to remove a highlighted module from the list above. The **Up** and **Down** buttons will move a module up or down the list. Use them to order the modules however you wish.
6. You can adjust the controls for the currently selected module from here. This does not affect the module's settings outside of this Randomizer.
7. Click **Demo** to preview the currently selected module. The speaker controls sound for the currently selected module. However, the speaker icon on the Randomizer module controls determines the global volume for all modules.
8. This slider controls how long each module is displayed. If **Default** is selected, the module will be displayed for the default duration chosen in the Randomizer module controls.
9. Type in a unique name for your Randomizer creation. It will show up in the module list whenever you select Randomizer from the module folder pop-up menu.
10. Click **OK** to save your changes or click **Cancel** to exit without saving.

Berkeley Systems, Inc. warrants that the documentation and the original Program disks are free from physical defects in material and workmanship under normal use for a period of sixty days from the date of purchase. If during this warranty period you discover that either the documentation or the Program disks contain a physical defect, return the defective item along with proof of purchase to your retailer and you will receive a replacement at no charge. This is your sole and exclusive remedy for breach.

THE WARRANTY SET FORTH ABOVE IS EXCLUSIVE AND IN LIEU OF ALL OTHERS, ORAL OR WRITTEN, EXPRESS OR IMPLIED. BERKELEY SYSTEMS MAKES NO WARRANTY OR REPRESENTATION, EXPRESS, IMPLIED, OR STATUTORY, WITH RESPECT TO THIS PROGRAM, ITS QUALITY, PERFORMANCE,

MERCHANTABILITY, OR FITNESS FOR A PARTICULAR PURPOSE. THIS PROGRAM IS SOLD "AS IS," AND YOU, THE LICENSEE, ARE ASSUMING THE ENTIRE RISK AS TO ITS QUALITY AND PERFORMANCE.

IN NO EVENT SHALL BERKELEY SYSTEMS BE LIABLE FOR DIRECT OR INDIRECT, SPECIAL, INCIDENTAL, OR CONSEQUENTIAL DAMAGES RESULTING FROM THE USE OF THE PROGRAM OR FROM ANY ERROR OR DEFECT IN THE PROGRAM OR ITS DOCUMENTATION. SUCH DAMAGES INCLUDE, BUT ARE NOT LIMITED TO, LOSS OF PROFIT, LOSS OF PROGRAMS OR DATA, AND DAMAGE TO YOUR MONITOR. IN NO EVENT SHALL BERKELEY SYSTEMS' LIABILITY EXCEED THE PRICE OF THE PROGRAM.

The above exclusions may not apply to you. This warranty provides you with specific legal rights. There may be other rights that you may have which vary from state to state.

TROUBLESHOOTING

Here are answers to a few problems you may have. More issues are covered in the Troubleshooting section of the **After Dark Online Manual** on your disk. If you still have problems, see the next section about contacting our technical support department.

Help! I forgot my password!

If After Dark asks for a password you don't know, follow these steps.

System 7: Restart your Mac while holding down the Shift key; keep Shift pressed until you see "Welcome to Macintosh, Extensions Off."

System 6: Restart off a startup floppy disk, such as System Startup.

In either case, the next step is to open the following sequence of folders: the **System Folder**; then the **Preferences** folder; then the **After Dark Preferences** folder. Finally, drag the **Preferences** file to the Trash and restart. After Dark will create a new Preferences file with default settings and no password. To reinstate password protection, you will need to create a new password.

My module (or music) doesn't play - "Out of memory" messages.

Some modules need more memory (RAM) than others, and modules with music need even more. A variety of factors, such as the amount of RAM in your Mac and how much memory is used by applications and system software, determine whether or not a module can run. From the Finder, select "About this Macintosh (or Finder)" from the Apple menu to see memory usage. Here are some things you can try:

- quit unused applications;
- use the module's controls to reduce its complexity;
- use Virtual Memory, if your Mac supports this feature. Note that virtual memory is inherently slow;
- reduce the number of colors your monitor is set to display;
- select a different module temporarily.

On my PowerBook, After Dark doesn't activate, or animation is "choppy."

PowerBooks have battery conservation options called Processor Cycling and Display Dimming that can interfere with After Dark. For details on how to turn those options off, consult your PowerBook manual, or see the PowerBook note in the After Dark Online Manual's Troubleshooting section.

TECHNICAL SUPPORT

For further information, please read the **After Dark Online Manual** on your disk. To help us help you, please read these suggestions before you call us.

Customer Service: For upgrades, serial numbers, replacement disks, different format disk, or other *non-technical* problem, ask for Customer Service.

Please be in front of your computer when you call, and try to have as much of the following information as possible about:

The problem—the nature of the problem and what led to it; if you're able to reproduce it; is it related to using a particular program; and if reinstalling After Dark did not solve the problem.

Your setup—your versions of After Dark & the system software; your Macintosh model and how much memory (RAM) it has; other Extensions/INITs and Control Panels in your System Folder.

When you call, please ask for Macintosh Tech Support.

Hours: Monday - Friday, 8 a.m. to 5 p.m. PST

Voice: (510) 549-2300 (you may leave voicemail any time)

FAX: (510) 849-9426

TTY/TDD: (510) 540-0709

Mail: Macintosh Technical Support
Berkeley Systems, Inc.
2095 Rose Street
Berkeley, CA 94709

We also offer technical support via online services. Here are our e-mail addresses and how to reach our support forums.

America Online: *BrklySystem* - use the keyword "berksys" to reach our forum

AppleLink: *D0346*

CompuServe: *75300,1376* - type GO MACBVEN and open section 5 to reach our forum

e-World: *BSI* - use the keyword "berkeley" to reach our forum

Internet: *mactech@berksys.com*

BERKELEY
SYSTEMS

Serial Number: ADM-55134-1159