

*Amazon Trail® 3rd Edition:
Rainforest Adventures™*

User's Guide

Amazon Trail® 3rd Edition: Rainforest Adventures™

© 2000 Mattel, Inc., and its licensors. All rights reserved. The Learning Company and The Amazon Trail are registered trademarks and Rainforest Adventures is a trademark of Mattel, Inc. QuickTime and the QuickTime Logo are trademarks used under license. All other trademarks are the property of their respective owners.



Hardware Requirements

Windows® 95: Pentium 90 MHz or higher; 16 MB RAM; 3 MB hard drive space (for installation); quad-speed CD-ROM drive; 256-color display; Windows-compatible sound card.

Macintosh®: PowerPC; System 7.1 or later; 16 MB RAM; 3 MB hard drive space (for installation); quad-speed CD-ROM drive; 256-color display (13" or larger).

Troubleshooting

For information related to installing or starting the program, see the README file, located in the TLC Tour folder on the CD.

Technical Support Department: 319-247-3333

Monday, Tuesday, Thursday, Friday, 9 AM – 9 PM; Wednesday 10:30 AM – 9 PM; Saturday 10 AM – 2 PM; all hours Eastern Standard Time

E-mail: help@tlcsupport.com

For more information about The Learning Company,
visit our World Wide Web site:
<http://www.learningco.com>

Contents

<i>Getting Started</i>	4
<i>Arriving in Belém</i>	6
<i>Starting Upriver</i>	8
<i>Talking to Your Guide</i>	10
<i>Checking Your Supplies</i>	11
<i>Fishing</i>	12
<i>Exploring the Rainforest</i>	14
<i>Meeting People along the Way</i> . . .	16
<i>Reading the Guidebook</i>	18
<i>Using Your Photo Album</i>	19
<i>Ending the Game</i>	20




A M A Z O N

That single word conjures up in our imaginations more mystery... more awe... and more excitement than perhaps any other.

The Amazon Basin is enormous — almost as big as the entire United States (not counting Alaska). It extends from the highest reaches of the Andes Mountains all the way across the continent of South America. At its mouth is an island that is almost twice as big as Vermont.

The Amazon River makes every other river in the world look small. In May, when the river is at its highest, the Amazon contains more water than the world's eight next largest rivers combined. The Amazon is so deep that ocean-going vessels can travel all the way upriver to Manaus, more than 900 miles from the river's mouth. It is so wide — more than 30 miles across in some places — that you can't always see both shores.

Amazon wildlife is the most diverse on Earth. There are more than 2,500 species of birds. At least 300 species of mammals. Two thousand species of fish. And untold millions of species of insects — a famous entomologist (insect scientist) once found 43 species of ants in a single tree.

 *Amazon plant life is equally diverse. It boasts at least 80,000 species of trees, vines, flowers, and other plants. Many are used by pharmaceutical*

companies as medicines, and many more are used by the Amazon's real plant experts, the people who have lived in Amazonia for thousands of years.

Amazon history is not widely known, but it is fascinating. As early as the 1500s, Spanish explorers were floating down the Amazon in a fruitless search for El Dorado, the mythical king so wealthy he bathed in gold. Many of the greatest scientists of the 1800s visited the Amazon and made significant discoveries there. In the twentieth century, the American automobile inventor Henry Ford tried to establish a rubber plantation in the Amazon, and former U.S. president Teddy Roosevelt almost lost his life exploring uncharted wilderness deep in the Amazonian rainforest.

Even with today's computer technology, we can't quite capture all of the Amazon's mystery, awe, and excitement on a CD-ROM. But we can bring you a rich and compelling rainforest adventure that in some ways is even more amazing than the Amazon itself. In Amazon Trail 3rd Edition, you'll travel hundreds of miles upriver in a matter of seconds. You'll go back in time and meet dozens of historical characters. In the rainforest, you'll be able to find a hundred species of animals that you'd be lucky to see even if you explored the real Amazon rainforest for a whole year. You'll be able to catch giant catfish and poison dart frogs! Take pictures of jaguars and howler monkeys! Match wits with a ruthless conquistador! Guide your canoe to hidden villages and meet people who have lived in the rainforest for countless generations! We hope you'll agree that Amazon Trail 3rd Edition is the next best thing to visiting the Amazon in person.



Getting Started

Installation and Start-up

1. Insert the CD in the CD-ROM drive.
2. **Windows 95:** Click on the Install button.
Macintosh: Double-click on the Installer icon.
3. Follow the onscreen instructions until the installation is complete.
4. Start the program:

Windows 95: From the Start menu, choose Programs > The Learning Company > Amazon Trail 3rd Edition.

Macintosh:

Double-click on the Amazon Trail 3rd Edition application icon.

5. Choose **New Quest** from the title screen.
6. Choose a level of difficulty.



The game begins with an introduction that takes place in a museum. After you have played the game a few times, you can advance quickly through the introduction by clicking anywhere on the screen.



Adjusting the Sound and Picture

Two commands on the Options menu let you customize basic sound and display features:

Hide Desktop blacks out or displays the part of your screen that is not taken up by *Amazon Trail 3rd Edition*.

Sound On turns on/off the program's sound effects, music, and character dialog.

Saving Games

To save a game in progress, choose the **Save** command or the **Save As** command from the File menu.

Here's a good way to save: Use the **Save As** command.

Save a game whenever you reach a landmark, and type a new name for each saved game. For example, when you reach the Xingu River, save your game under the name "Xingu."



You can restart a saved game by choosing **Load Quest** from the program's title screen.



Belém is a port near the mouth of the Amazon River, about 70 miles from the Atlantic Ocean.

From the 1600s to the mid-1800s, it was the only port of entry into Amazonia. All the great explorers and naturalists passed through Belém. It is still a major port today, with a population of over one million.

Just like the great explorers of yesteryear, this is where you will begin your journey up the Amazon River.

- First, decide which guide you want to join you. Each guide has unique qualities that may help or hinder you on your journey.
- Next, talk to the shopkeeper. He'll offer you a choice of package deals on supplies. Think carefully about which package you want. Do you want to take extra food? Extra harpoons for fishing, or machetes for exploring the rainforest? Or maybe you'd prefer to take extra trading packets, so you can barter with people you meet along the way. The choice is yours!
- If you prefer to get started right away, talk to the shopkeeper and ask him to choose a guide and supplies for you.





Click on the guides to talk with them.

When you have chosen a guide, click on the shopkeeper to get your supplies.

A row of buttons appears after you have a guide and supplies. Click on the arrow when you're ready to move along.



There are
two
seasons

Starting Upriver

in Amazonia: the dry season and the rainy season. Each lasts about six months. In the dry season, skies are usually clear and rain showers are brief. In the rainy season, skies are cloudy and heavy showers are common. Rivers can rise 40 feet or more in the rainy season.

Your task in *Amazon Trail 3rd Edition* is to travel from Belém, near the mouth of the Amazon, all the way to Vilcabamba, near the river's source. It's a journey of more than 4,000 miles, with adventure lurking around every bend!

Things to Do



Talk to your guide.



*See items collected from
people along the way.*



Check your supplies.



*Look at photos you've
taken in the rainforest.*



Go fishing.



Check the map.



Read the guidebook.



Explore the rainforest.

Steering Your Canoe

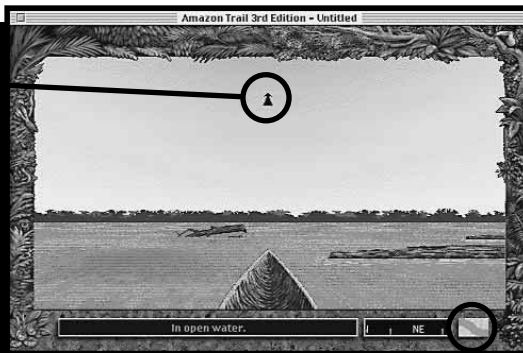
You can adjust the way your computer displays the river by choosing the **River Graphics** command from the Options menu.

The program is set up to use the Fancy setting. If you find that your computer seems to slow down during river travel, or if you want to make it a little easier to steer your canoe, try the Medium or Basic setting.

The shape of the pointer shows what direction you're going.

Watch out for sand bars, sunken logs, and other obstacles!

If it looks like you're going the wrong way, ask your guide to turn around.



See a detailed map of your current location.

Talking to Your Guide

People in Amazonia speak many different languages. The official language of Brazil is Portuguese, and the official language of other countries is Spanish. There are dozens of Indian dialects; most are based on one of five main languages.



Talk to your guide when you want to find out how you're doing, to rest, or to change your pace or rations.

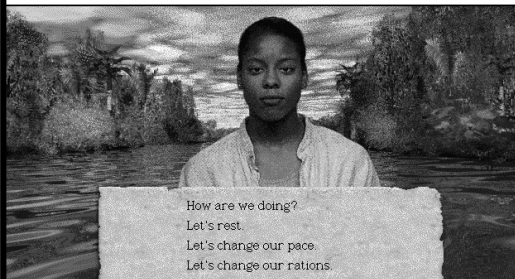
It's a good idea to rest when you're injured or sick.

Go too fast and you might crash.

Go too slow and you might never get to Vilcabamba.

Eat too little and you might get sick. Eat too much and you might run out of food!

Hey there! What's up with you?



How are we doing?
Let's rest.
Let's change our pace.
Let's change our rations.

Checking Your Supplies

People traveling in Amazonia need tents and good clothing to prevent mosquito bites. They need machetes to cut through dense vegetation. And they need plenty of food!



You'll need these same supplies as you make your way upriver in *Amazon Trail 3rd Edition*.



Sometimes people give you things that are not basic supplies. These special items are kept in this basket; many of them will come in handy later on in your trip.



Point to an item to see how much or how many you have.

If an item is all red, it means that you are out or very low.

Fishing

There are at least 2,000 species of fish in Amazonia — more than in the entire Atlantic Ocean! Many kinds of fish are caught for food, while others are caught for the tropical fish market. The best place to see fish is at the open-air markets in the river towns.

Here's how to catch fish in Amazon Trail 3rd Edition:

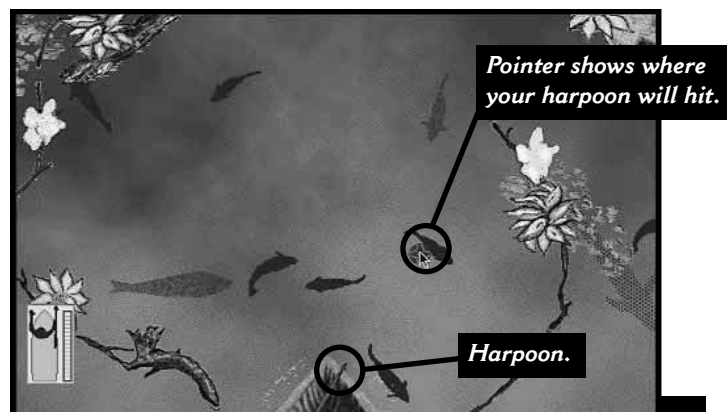


1. Point at a fish that you'd like to catch.
2. Hold down the mouse button — just for a moment for fish close to the surface, longer for fish closer to the bottom.
3. Release the mouse button.
4. If you miss, click the mouse button to get your harpoon back.

If you hit a fish, you'll have a chance to keep it, release it, or look it up in the guidebook. Be careful! Some fish are dangerous!



If you prefer not to look at the fishing meter, turn off the **Show Fishing Meter** command on the Options menu.



*Pointer shows where
your harpoon will hit.*

Harpoon.

Fish close to the surface are black.
Fish deeper in the river are shades of gray.
*The fishing meter shows how hard you will
throw the harpoon.*
*If you're not sure what you've hit, you'd better
look it up in the guidebook.*

Exploring the Rainforest

Along the banks of rivers there is plenty of sunshine, and the vegetation is very dense. But inside the Amazon rainforest, only 1% of the sunlight reaches the



forest floor. The rest is blocked out by the trees. Young plants grow as tall as they can as fast as they can, which leaves a lot of open space on the ground.

To go deeper into the rainforest, click at the top of the screen. To go back, click at the bottom of the screen.

There are many animals to identify. There are also some edible plants that you can add to your food supply.



In *Amazon Trail 3rd Edition*, you can take pictures of the plants and animals you find. When you identify something, you can add its picture to your photo album.

At different locations, you'll be able to explore the rainforest floor, a marsh, a flooded forest, and the rainforest canopy. So make sure to stop and explore at least once between every landmark — there's no telling what you might discover!

When you see something promising, click on it. Then click on the part of the photo that shows what you want to identify. Some of your photos may contain two or more things to identify.

If you know what it is, click on its name. If you're not sure, it's a good idea to look it up in the guidebook.

When you identify something, the program puts that photo in your photo album. If you already have a picture of that species, the new photo replaces the old one.



The Amazon's first human inhabitants migrated from the north and reached the Amazon basin at least 10,000 years ago. The size of the population when Europeans arrived in the sixteenth century was somewhere between two million and 15 million. Today only about 200,000 remain.

Meeting People along the Way

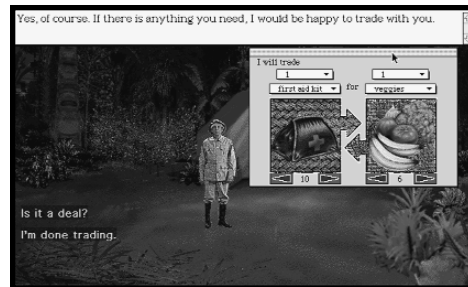
In *Amazon Trail 3rd Edition*, you'll have a chance to meet people from many different tribes. You'll also get to meet conquistadors from the 1500s, naturalists from the 1800s, modern-day business executives, and many more.



You'll meet people at landmarks all along the river. To hear what they have to say, just click on them.

- Some people provide valuable clues for a successful journey. But be careful! Some people may give you bad advice or even try to trick you!
- Most people will trade with you. Some want to trade right away, while others want to get to know you before they'll trade.
- Many people will ask you to help them in some way. Every time you help someone, the Jaguar will add a jewel to your shield.

Trading



Choose an item and quantity that you are willing to trade.

Choose an item and quantity that you want to receive.

Click on "Is it a deal?"

- Two commands on the Options menu affect characters' speech: The **Sound On** command turns on/off the audio; the **Show Dialog** command turns on/off the written display of dialog (like subtitles in a movie).

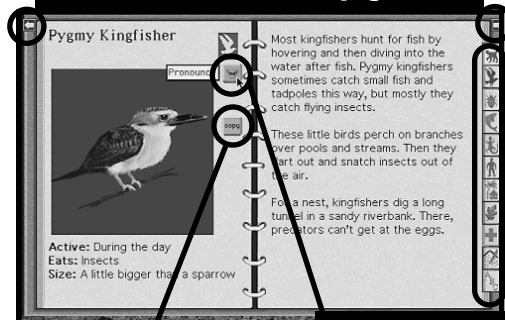
The guidebook helps you identify animals you see in the rainforest, and it contains information about the people you meet, the places you visit, and much more.

Reading the Guidebook



The guidebook includes a table of contents for each category as well as an index. In addition, there's a journal where you can write about your experiences.

Click on the arrows to turn pages.



Click on a category to see its list of entries.

Hear how the entry is pronounced.

18

Copy the page to your computer's clipboard. Later, you can open the page in a "paint" program.

The photo album contains the pictures of plants and animals you've identified in the rainforest.

Using Your Photo Album



Remember, there is room in the photo album for only one picture of each species. If you photograph and identify something that's already in the photo album, the new picture will replace the older one.

Click on the arrows to turn pages.



Click on Checklist to see a list of everything you can find.

When conquistadors invaded their capital, Cuzco, in 1533, the Incas escaped to a remote rainforest valley called

Espíritu Pampa — the Plain of Ghosts. There, they built Vilcabamba, a grand city with palaces, temples, and fountains. Manco Inca ruled there for 25 years. His three sons, including Titu Cusi, succeeded him. In 1572, Vilcabamba fell to the Spanish, who established a mining center there. When the Spanish left in the 1700s, the rainforest quickly covered the city. The American archeologist


Gene Savoy discovered the lost city in 1964, but to this day, it still is largely unexplored.




If you're skillful (and lucky!) enough to make it all the way to Vilcabamba, you'll be greeted by the Inca King. Then the Inca historian, called the quipucamayoc (kee-poo-ka-MAY-oc), will tell you how well you did. And if you've done especially well, the Ancient Ones will entrust you with their secret message.





 If you want to end your game any time before you reach Vilcabamba, choose **End Quest** from the File menu. Later, you can restart the game by choosing **Load Quest** from the program's title screen.

 **Reset High Score List** on the Options menu lets you delete the names on the high score list. As you play *Amazon Trail 3rd Edition*, you get points for many things, including what you do when you talk to people, how healthy you stay, and how well you manage your supplies. If you score enough points, you can enter your name on the high score list!