



Accelerated Reader[®]

Reading
Management
Software



Upgrade Installation Guide

Motivate Your Students to Read More and Better Books!

Renaissance Learning
P.O. Box 8036
Wisconsin Rapids, WI 54495-8036
Phone: (800) 338-4204
Fax: (715) 424-4242
Email: answers@renlearn.com, support@renlearn.com
Web: www.renlearn.com

Copyright Notice

Copyright © 2001, Renaissance Learning, Inc. All Rights Reserved. Printed in the United States of America.

Except as permitted under the United States Copyright Act of 1976, no part of this book may be reproduced or transmitted in any form or by any means, electronic or mechanical, including photocopying, recording, or by any information storage and retrieval system, without prior written permission from Renaissance Learning, Inc.

Accelerated Reader®, Reading Renaissance®, STAR Reading®, STAR Math®, and Accelerated Math® are registered trademarks of Renaissance Learning, Inc. Perfect Copy™, STAR Early Literacy™, Surpass™, and AR™ are trademarks of Renaissance Learning, Inc.

Macintosh® is a registered trademark of Apple Computer, Inc. QuickTime™ is a trademark of Apple Computer, Inc.

Microsoft®, Windows®, and Windows 95® are registered trademarks of Microsoft Corporation.



QuickTime™

Contents

Welcome	2
System Requirements	3
Network Rights	4
Finding the Instructions for Your Type of Upgrade	6
Macintosh Computers: Upgrading from 1.x-5.01 to 6.x, or Upgrading from 5.1x or an Earlier 6.x Version When the Database Isn't Shared	7
Installing Accelerated Reader 6.x on Macintosh Computers	7
Registering Accelerated Reader on Stand-alone Computers or the First Network Computer (1.x-4.x Upgrades ONLY)	13
Registering Accelerated Reader on the Remaining Network Computers (1.x-4.x Upgrades ONLY)	20
Macintosh: Upgrading from Version 5.1x or 6.x When the Database Is Shared by Multiple Computers on a Network	23
Windows: Upgrading from 1.x-5.01 to 6.x, or Upgrading from 5.1x or an Earlier 6.x Version When the Database Isn't Shared	27
Installing Accelerated Reader 6.x on Windows Computers	27
Registering Accelerated Reader on Stand-alone Computers or the First Network Computer (1.x-4.x Upgrades ONLY)	34
Registering Accelerated Reader on the Remaining Network Computers (1.x-4.x Upgrades ONLY)	41
Windows: Upgrading from Version 5.1x or 6.x When the Database Is Shared by Multiple Computers on a Network	44

Welcome

Thank you for selecting Accelerated Reader® software. This *Upgrade Installation Guide* explains how to upgrade from previous versions of Accelerated Reader to the latest 6.x version. To install the software (and register it if necessary), you will need the following:

- The Accelerated Reader CD-ROM.
- The serial number and school information. This information is printed on the one-page installation instructions you received with the software. It may also be on a label attached to the CD-ROM jewel case.
- The default password for the Management program (**admin**).

IMPORTANT

If you are upgrading from version 5.x or higher, your data will be converted for use with the latest version. You will not be able to use the database with previous versions of Accelerated Reader. Make a backup copy of your data folder before you begin upgrading.

System Requirements

Accelerated Reader 6.x software is designed to take full advantage of the enhancements in today's Macintosh and Windows computers. Make sure your computer meets the following *minimum* hardware and software requirements before you install the Accelerated Reader software. If your computer exceeds these requirements, you will see even better performance. If you have any questions, email us at answers@renlearn.com.

Computer	Macintosh	Windows
Processor	68040 (PowerPC if you will be using recorded voice quizzes)	486 (Pentium if you will be using recorded voice quizzes)
Operating System	System 7.6 or higher	Windows 95 or higher
RAM	8 MB free (16 recommended) (16 MB free required if you will be using recorded voice quizzes)	8 MB installed (16 recommended) (16 MB installed required if you will be using recorded voice quizzes)
Hard Drive Space	35 MB available (Each voice quiz increases the requirement by about 0.5 MB.)	35 MB available (Each voice quiz increases the requirement by about 0.5 MB.)
3.5" Diskette Drive	Required	Required
CD-ROM	Required	Required
Pointing Device (mouse)	Required	Required
Monitor Display Size	640 x 480	640 x 480
Colors	256 color or better	256 color or better
Printer	Strongly recommended	Strongly recommended
Sound Card		Sound Blaster or compatible sound card required if you will be using recorded voice quizzes
Speakers/headphones	Required if you will be using recorded voice quizzes	Required if you will be using recorded voice quizzes
Sound driver		DirectX version 3.0 or later recommended

Network Rights

If you will be using Accelerated Reader 6.x on a network, the program itself should be installed on each computer's hard drive, but the data folder will be shared across the network. In order to share the data folder, you need to set up the following network rights. If you choose to run the software directly from the file server instead of installing it on each networked computer, you must grant the same access to your program files.

Windows NT Networks

Grant the Change Permission to the main data folder on your file server, including all subfolders and files. The main data folder contains the Common data folder and a data folder for each Renaissance Learning product that is using the data. If you want to assign specific rights to the folders, make sure you include the Read, Write, and Delete permissions. If you will be using Accelerated Reader on both Macintosh and Windows computers, *be sure to set the Macintosh permissions first*; then, set the Windows permissions.

Windows 2000 Networks

Grant the Modify Permission to the main data folder on your file server, including all subfolders and files. The main data folder contains the Common data folder and a data folder for each Renaissance Learning product that is using the data. If you want to assign specific rights to the folders, make sure you include the Read, Write, and Delete permissions.

Novell Networks

Grant the following rights to the main data folder on your file server, including all subfolders and files. The main data folder contains the Common data folder and a data folder for each Renaissance Learning Product that is using the data.

[RWCEMF]

(read, write, create, erase, modify, and file scan)

AppleShare Networks

Grant the following privileges to the main data folder on your file server, including all subfolders and files. The main data folder contains the Common data folder and a data folder for each Renaissance Learning Product that is using the data.

AppleShare 4.x: Check all nine boxes.

AppleShare IP 5.x and 6.x: Pencil and glasses (read and write).

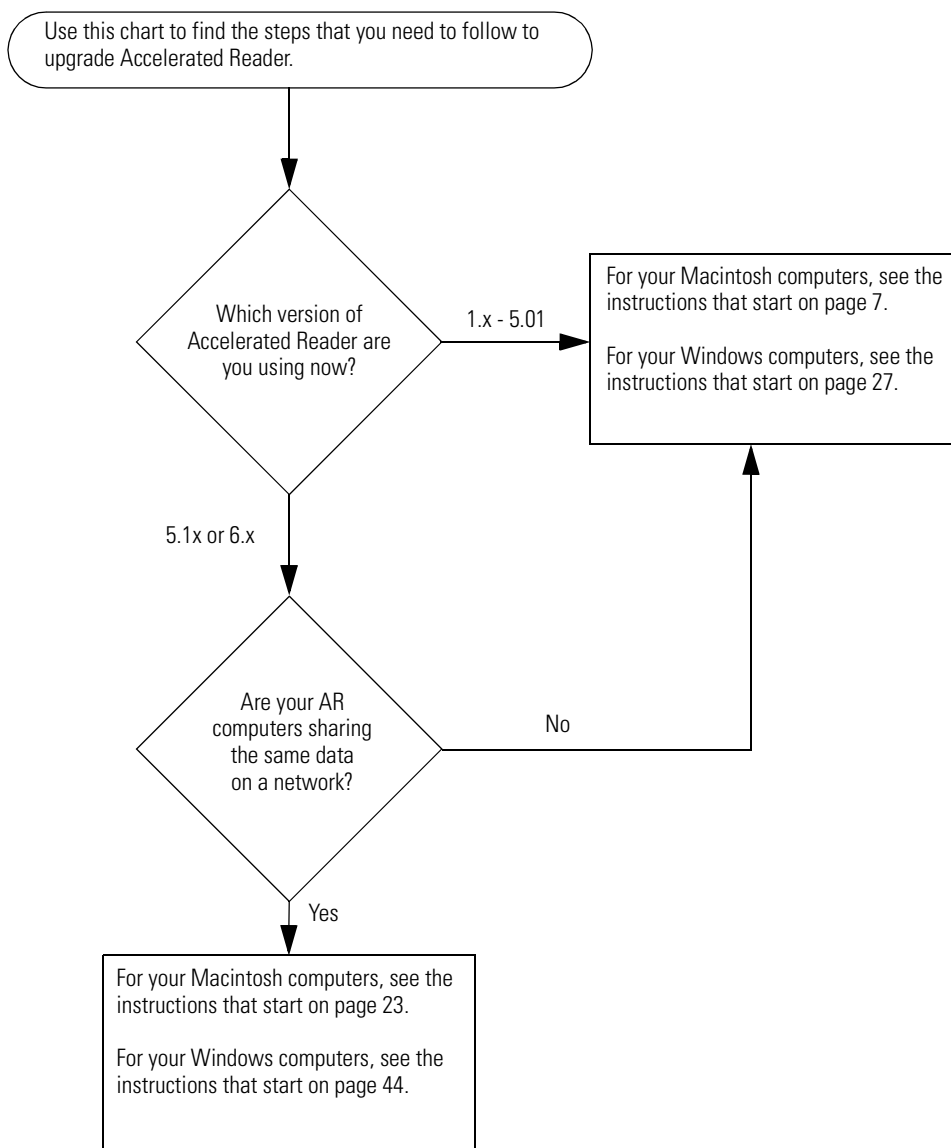
Unix/Linux Networks

Grant the following permissions to the main data folder on your file server, including all subfolders and files. The main data folder contains the Common data folder and a data folder for each Renaissance Learning product that is using the data.

Read, Write, and Execute (drwxrwxrwx) for the owner, group, and others. If you have a group created for students and teachers, you can grant Read, Write, and Execute permissions to the owner and to that particular group only (drwxrwx---).

Finding the Instructions for Your Type of Upgrade

The steps that you need to follow to upgrade Accelerated Reader depend on the version you're using now, database sharing, and the type of computer you're using. Use the flowchart below to find the steps you should follow to upgrade Accelerated Reader.

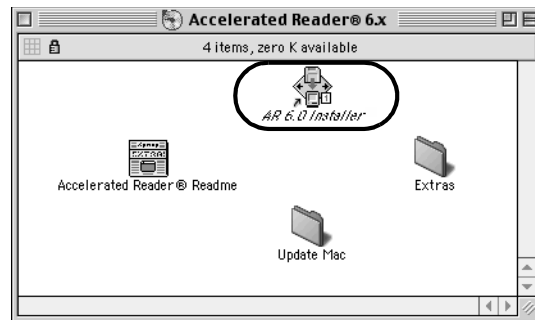


Macintosh: Upgrading from 1.x-5.01 to 6.x, or Upgrading from 5.1x or an Earlier 6.x Version When the Database Isn't Shared

Installing Accelerated Reader 6.x on Macintosh Computers

Follow these instructions for each Macintosh computer that you need to upgrade to the latest version of Accelerated Reader 6.x.

1. Insert the Accelerated Reader CD-ROM into your computer's CD-ROM drive.
2. On your computer's desktop, an **Accelerated Reader** window will open, showing the contents of the CD-ROM. *If the window does not open automatically, double-click on the Accelerated Reader CD icon to open it.*
3. Double-click the **AR 6.x Installer** icon.



4. Next, the installer will check to see if your computer has QuickTime installed. If not, the program will ask if you want to install support for voice-enabled quizzes. If you plan to use recorded voice quizzes, or if you may do so in the future, click [Yes]. If not, click [No].

INSTALLING SUPPORT FOR RECORDED VOICE QUIZZES

You only need to install support for recorded voice quizzes if you plan to use this type of quiz. Even if you are not planning to use recorded voice quizzes now, it may be helpful to install support for these quizzes if you may purchase them in the future. To install QuickTime to support the quizzes, click [Yes]. To skip the QuickTime installation and use Accelerated Reader without the recorded voice quizzes, click [No].

5. Next, a **Welcome** screen may appear and disappear.
6. The dialog box that appears next shows you the folder where the software will be installed.

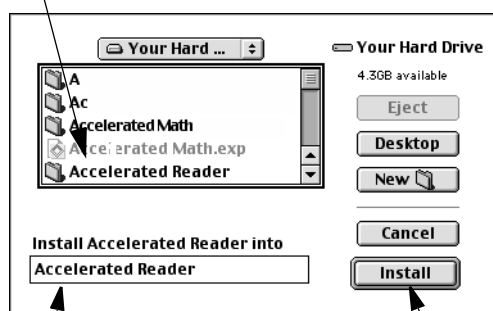
If you are upgrading from Accelerated Reader version 5.x or an earlier version of 6.x:

When you upgrade from version 5.x or an earlier version of 6.x, you need to install the latest version of 6.x directly over your current software. To do this, follow these steps:

- a. Click the [Desktop] button.
- b. Double-click on the name of your hard drive.
- c. Scroll through the list. If your current AR program folder is directly on your hard drive, note the name, but **do not open it**. If the program folder is inside of another folder, open that folder so that you can see the program in the list, but **do not open the program folder**.
- d. The bottom of the dialog box shows the name of the folder in which AR 6.x will be installed. If this does not match the folder name of your current AR program folder, click in the blank and type the exact name of the AR program folder. The name must match exactly so that the installer will install AR 6.x over your current software.
- e. Go to step 7 on page 10.

First:

Navigate to your hard drive and find the folder where your current version of Accelerated Reader is installed. **Do not open the folder.**



Second:

Make sure the name of the Accelerated Reader 6.x folder is the same.

Last:

Click [Install].

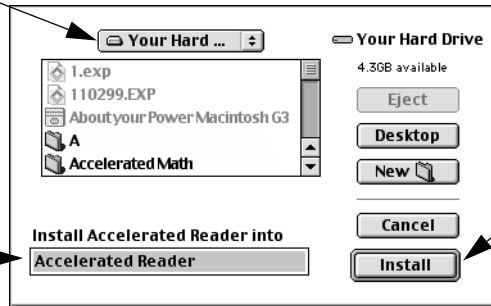
If you are upgrading from versions 1.x-4.x of Accelerated Reader:

You should not install AR 6.x in the same folder where your current version of AR is installed. Instead, install AR 6.x in a different folder on your computer's hard drive.

If you want to use the default program folder name and location, click the [Install] button *and go to step 7 on page 10. Make sure you do not click on a folder; if you do, the [Install] button will change to [Open], and you will need to click the [Desktop] button and double-click on your hard-drive name again.*

The default location is your hard drive. This drop-down menu will show your hard drive name.

The name of the new folder where the Accelerated Reader software will be installed.

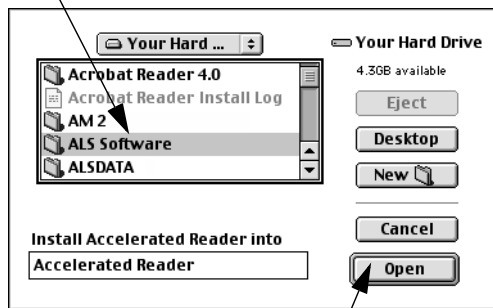


Click the [Install] button if you want to accept the default location.

If you want to put the Accelerated Reader program folder inside of another folder, click once on the folder name; then, click the [Open] button to open the folder. Click the [Install] button *and go to step 7 on page 10.*

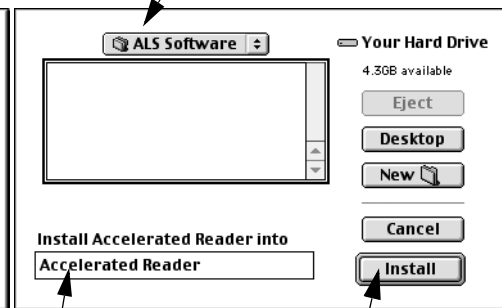
First:

In this list, click on the folder in which you would like to put the Accelerated Reader installation folder.



Second:
Click the [Open] button.

This is where your Accelerated Reader program folder will be located.



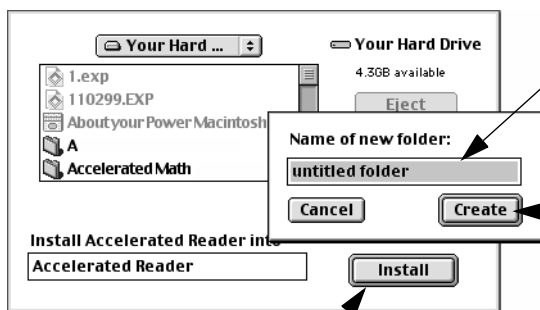
The name of the folder where the Accelerated Reader program files will be installed.

Last:
Click the [Install] button.

If you want to create a new folder and put the Accelerated Reader program folder inside of that folder, click the [New] button, type the new folder name, and click the [Create] button. After you have created your folder, click the [Install] button *and go to step 7*.

First:

If you do not want the new folder directly on your hard drive, double-click on the folder in which you want to create it.



Second:

Click the [New] button; then, type the new folder name.

Third:

Click the [Create] button.

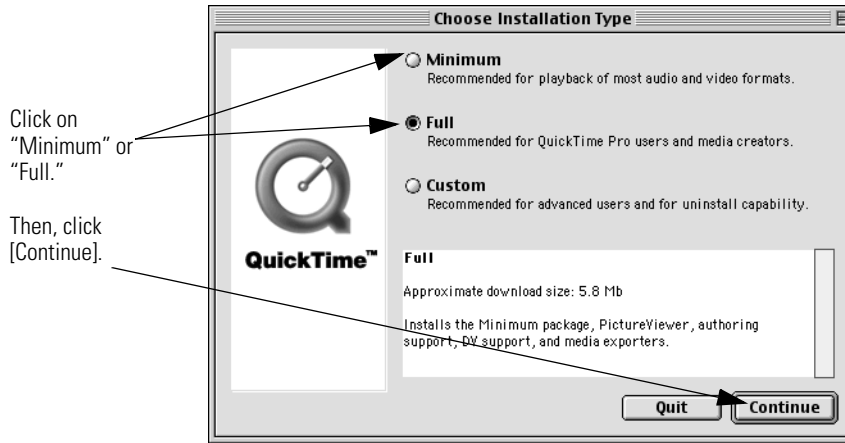
Last:

Once you are done creating the folder, this button will change from [Open] to [Install]. Click the [Install] button.

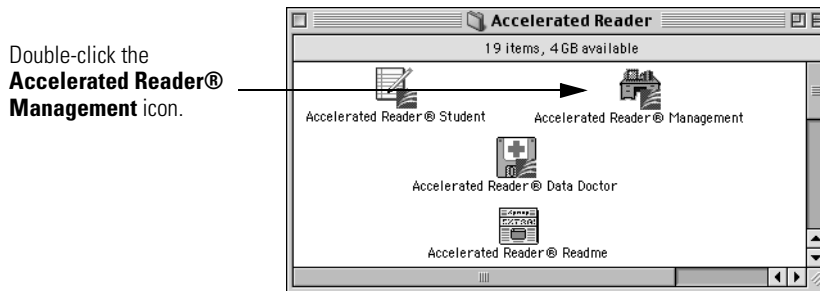
7. The Accelerated Reader software will be installed in the location you selected. The program will notify you when AR installation is complete (successful). Click the [Quit] button.
8. If you chose not to install support for recorded voice quizzes, or if the question did not appear when you started installing Accelerated Reader, *skip steps 9 to 14 and go to step 15*.

If you chose to install support for recorded voice quizzes, the QuickTime Setup Assistant will start.

9. In the **Welcome to QuickTime** panel of the Assistant, click the [Continue] button.
10. Next, the QuickTime license agreement will appear. You can read the agreement on your screen by scrolling down through it, or you can click the [Print] button to print it. You can also save a copy of the license by clicking the [Save As] button. When you're ready to go on, click the [Agree] button.
11. Next, the program will ask what type of installation you would like to do. Click on "Minimum" or "Full." Then, click the [Continue] button.



12. If a **Connection Speed** panel appears, click on one of the options; then, click the [Continue] button.
13. In the **Registration** panel, you can click the [Continue] button. You do not need to enter any registration information.
14. The QuickTime software will be installed. When the installation is complete, the program will notify you that installation was successful and that the computer needs to be restarted. You must restart the computer before you can use QuickTime with Accelerated Reader. If possible, restart the computer now by clicking the [Restart] button.
15. After installation, the folder for the Accelerated Reader software will open. (If it is not already open, open the folder where you installed the software.) Double-click the **Accelerated Reader® Management** icon to start the Management program.



16. The **Accelerated Reader Welcome** screen appears. Click anywhere in the **Welcome** screen or press any key on your keyboard to continue.

17. If you are upgrading from Accelerated Reader version 5.x or an earlier version of 6.x, an alert will appear, asking if you would like to upgrade the data. **Once you upgrade your Accelerated Reader data, you cannot use it with your old version of the software. Conversion of the database may take some time if you have a large database.** We recommend that you make a backup copy of your data folder before you upgrade. To continue and upgrade the data, click the [Yes] button. You may also be asked if you would like to update your interest levels. To make sure that the AR screens and reports show the most accurate interest level information, click [Yes]. For more about interest levels, see the Help in the Management program.

IMPORTANT NOTE FOR UPGRADES FROM VERSION 5.X OR 6.X

It is a good idea to back up your current data before upgrading. If you prefer not to upgrade the data right now, click the [No] button; then, choose or create a different data folder by following the instructions in the Assistant that appears.

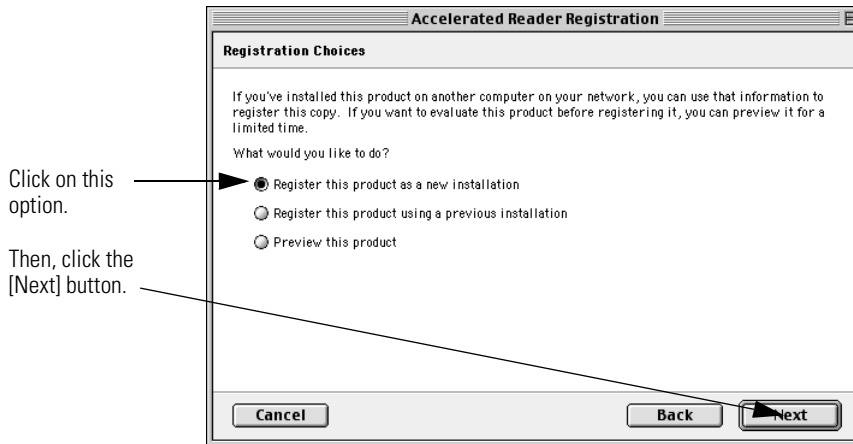
If you have upgraded from Accelerated Reader version 5.x or an earlier version of 6.x, the upgrade is complete. Now, use the *Accelerated Reader Software Manual* or the help in the programs' Help menu to find out more about the latest features of Accelerated Reader.

If you are upgrading from version 1.x-4.x of Accelerated Reader, the Registration Assistant will open. The first panel welcomes you to the Assistant. You need to register the software to create a new data folder and upgrade your previous data. The steps that you need to follow depend on how you will be using Accelerated Reader:

- If you only plan to use Accelerated Reader on this computer, or if you want this computer to have its own separate (unshared) database, go to “Registering Accelerated Reader on Stand-alone Computers or the First Network Computer (1.x-4.x Upgrades ONLY)” on page 13.
- If you plan to have more than one computer on your network share the same Accelerated Reader class, student, and quiz and test data, follow these steps:
 - a. After you install Accelerated Reader on the first computer on your network, go to “Registering Accelerated Reader on Stand-alone Computers or the First Network Computer (1.x-4.x Upgrades ONLY)” on page 13. After you register your software, you can upgrade your previous Accelerated Reader data.
 - b. After you install Accelerated Reader on the other computers on your network, go to “Registering Accelerated Reader on the Remaining Network Computers (1.x-4.x Upgrades ONLY)” on page 20. As you follow these steps, you will select the database that you set up at the first network computer.

Registering Accelerated Reader on Stand-alone Computers or the First Network Computer (1.x-4.x Upgrades ONLY)

1. After you installed Accelerated Reader and started the Management program, the **Registration Assistant** started. The first panel welcomes you to the Assistant. After you have read the information in this panel, click the [Next] button.
2. In the **Registration Choices** panel that appears next, you can choose from three options. Click on the option called "Register this product as a new installation." Then, click the [Next] button.



3. The **New Registration** panel appears next. Click in the blanks and type the serial number, school name, school location, and your name (Installed By). You can find this information printed on the one-page installation instructions that you received with the software; the information may also be on a label attached to the Accelerated Reader CD-ROM jewel case. As you enter the serial number, be careful not to confuse "Z" and "2," "I" and "1," "S" and "5," or "O" and "0." When you have finished entering the information, click the [Next] button.

Enter the serial number, school name, school location, and your name.

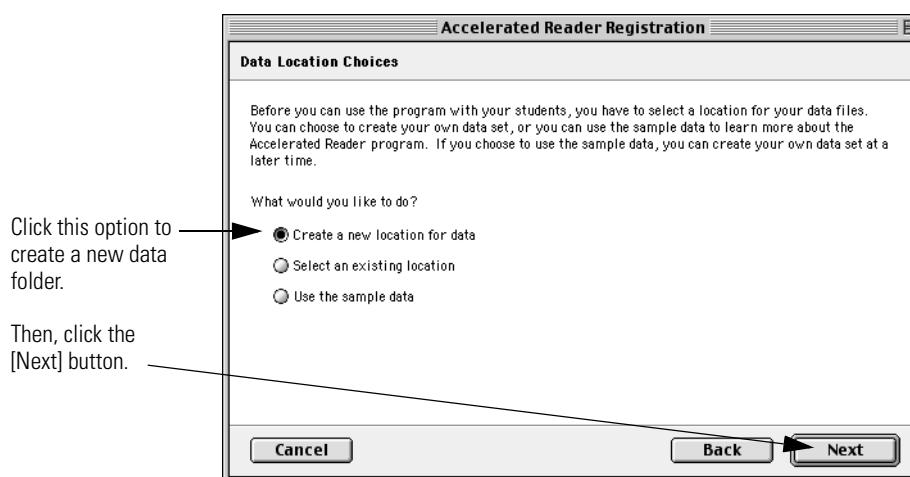
Click the [Next] button.

4. The **Upgrade Code** panel appears next. You can find the four-character Upgrade Code on the one-page installation instructions you received with your software; the code may also be on a label attached to your CD-ROM jewel case. Type in the upgrade code; then, click the [Next] button.
5. The **Data Location Choices** panel appears next. This panel lets you choose a folder for your Accelerated Reader database.

We strongly recommend that you create a folder called **ALSDATA** and select that folder as the data location for all of your Renaissance Learning software (such as Accelerated Math). If you've already created a data folder with your other Renaissance Learning software, we suggest that you select that data folder for Accelerated Reader. If you share a data folder, the students in the database will be available to all of your programs. For example, if you add students in Accelerated Reader, and you share the database with Accelerated Math, the Accelerated Reader students will automatically be included in the Accelerated Math student list.

You need to create a new data folder for AR 6.x or select a data folder that you are using for other Renaissance Learning software. You cannot use your previous data folder.

To create a new data folder or to share an existing ALSData folder that you have never used with Accelerated Reader, click on the option called "Create a new location for data." Then, click the [Next] button.



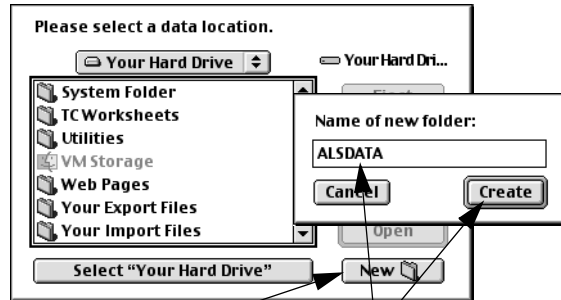
6. In the **Select Location** panel, you can create or select the folder for your Accelerated Reader data. **Start by clicking the [Select Location] button.** Then, use the dialog box that opens to select a data location. *If several computers will be sharing the data over a network, make sure the data is on a drive that all of the computers can access.*

To create a new data folder:

- Click the [Desktop] button. Then, double-click on the drive where you want to create the new data folder. If you want to put it inside of another folder, double-click on that folder name to open it.
- Click the [New] button.
- Type in the new data folder name; then, click the [Create] button. (We recommend using **ALSDATA** so that the name is not specific to any one program.)
- Click the [Select "Your folder name"] button. (The button shows the name of the folder you created.)

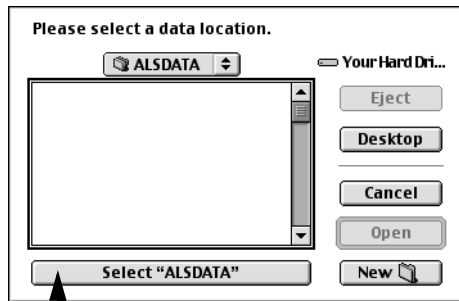
First:

Click the [Desktop] button; then, use the list to choose the drive where you want to put your data folder. To put it inside of another folder, double-click that folder to open it.



Second:
Click the [New] button.

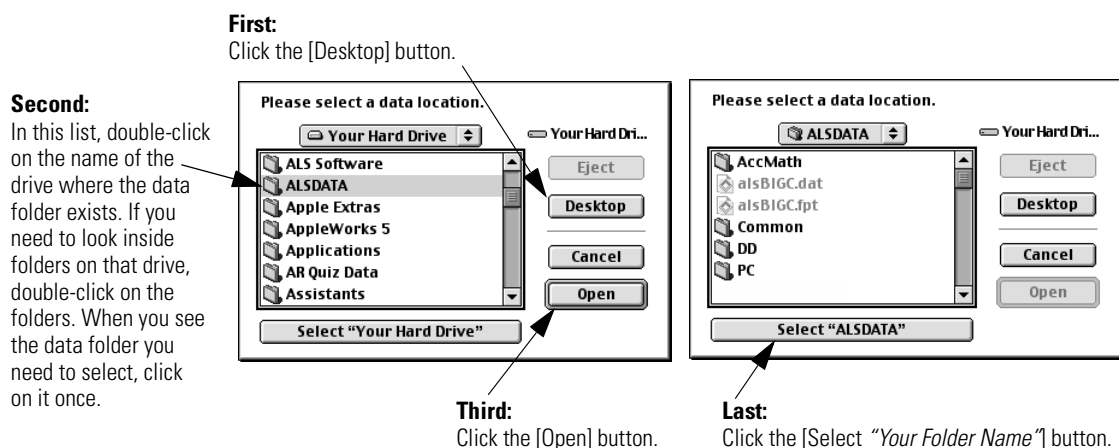
Third:
Type the new folder name;
then, click the [Create] button.



Last:
Click the [Select "Your Folder Name"] button.

To select a data folder that already exists (from other Renaissance Learning software):

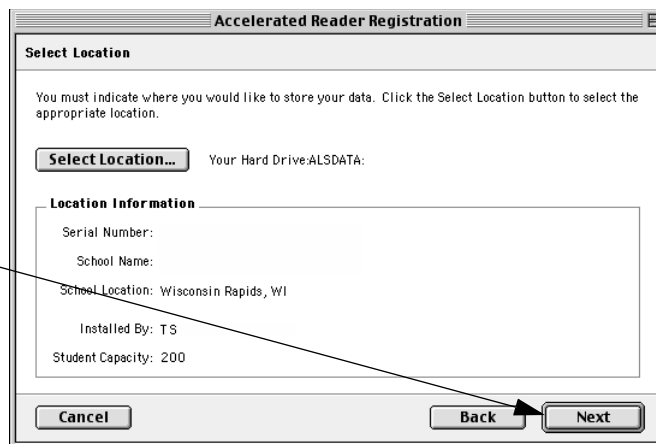
- a. Click the [Desktop] button.
- b. Double-click on the drive where the folder is located.
- c. If you need to open other folders on the drive to find the data folder, double-click on the name of each folder you need to open.
- d. When you see the data folder you want to select in the list, you can either double-click on the folder name or click once on the folder and click the [Open] button.
- e. Once the data folder is open and its contents are listed, click the [Select "Your folder name"] button. (The button shows the name of the data folder you selected.)



7. At the **Select Location** panel, make sure the data location and the registration information are correct. If the data location is not correct, click the [Back] button and repeat the instructions in step 6. If everything on the panel is correct, click the [Next] button.

Verify that the registration information is correct.

Then, click the [Next] button.

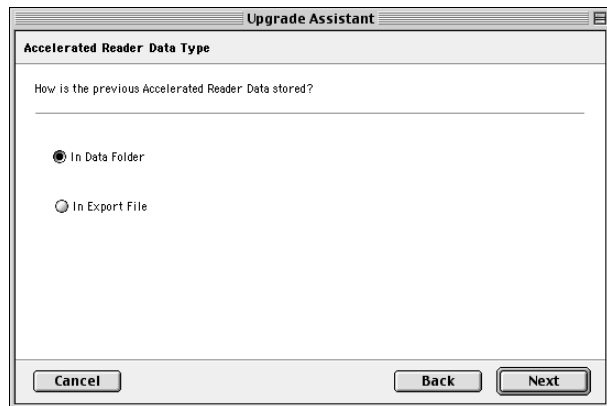


8. At the **Registration Completed** panel, click the [Done] button.
9. After you have finished registration, the Management program starts. To enter the program, you need to enter your password. In the **Password** dialog box that appears, type this default password: **admin**. (Your password will be shown as •••••.) After you enter the password, click the [OK] button. The Management program will open.

Default Password: admin

10. When the Quick Tips appear, click the [OK] button.
11. Next, you will be asked if you would like to upgrade data from a previous version of Accelerated Reader. Click the [Yes] button. The **Upgrade Assistant** will start.
12. Read the information in the **Welcome** panel; then, click the [Next] button.
13. In the **Accelerated Reader Data Type** panel, click on one of the following options:

- **In Data Folder:** Click on this option if you have been using Accelerated Reader version 2.x-4.x. Choosing this option will let you upgrade the "Data" folder that is usually inside of your AR program folder. When you're ready to go on, click the [Next] button.



- **In Export File:** Click on this option if you have an export file that you created using version 1.x-4.x. By choosing this option, you can upgrade the data from your export file instead of a 2.x-4.x data folder.

14. At the panel called **Select Previous Accelerated Reader Data**, click the [Select Data] button. Then, find and open your AR data folder or export file. (The dialog box that you use to find and open your data is similar to the one you used to create or choose your AR 6.x data folder.)

If you are upgrading using a data folder, find the folder. It is usually inside of your AR 2.x-4.x program folder. Open the Data folder; then, click the [Select] button at the bottom of the dialog box.

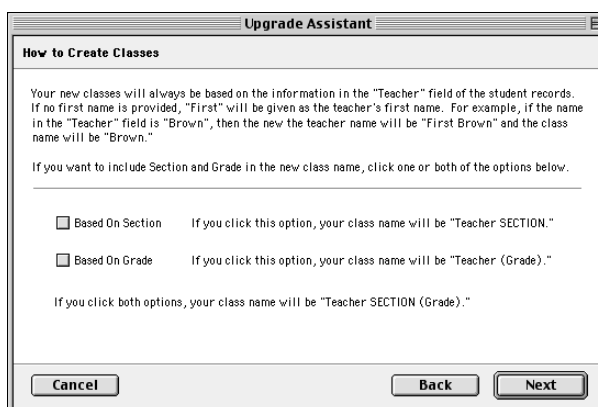
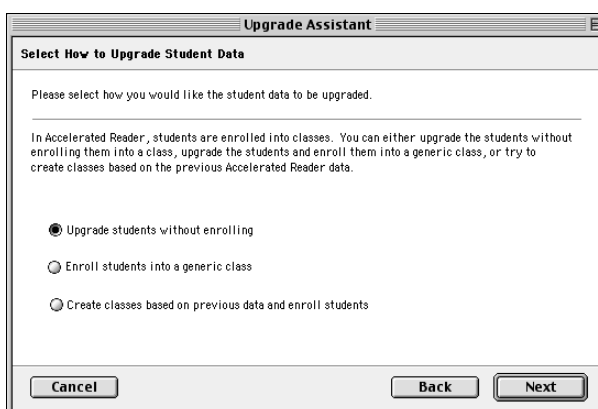
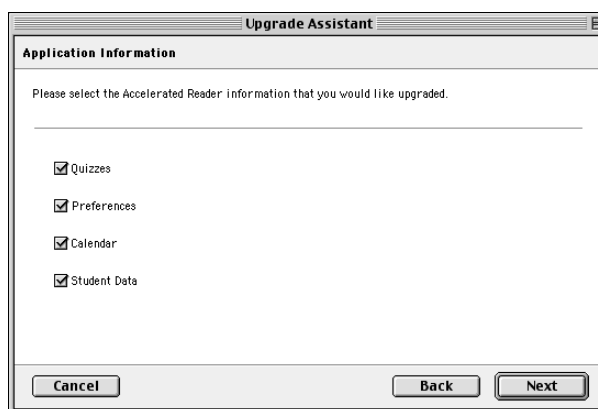
If you are upgrading using an export file, find the file. Then, click on it once and click the [Open] button.

15. *If you are upgrading from an export file, skip this step and go to step 16.*

If you are upgrading from a data folder, the **Application Information** panel will appear next. In this panel, you can choose the data that you want to upgrade (quizzes, preferences, calendar, and student data). Check the box for each item you want to upgrade. To check a box or remove a check, click in the box. When you're ready to go on, click the [Next] button.

16. The next panel lets you decide how you want to handle enrollment for the students in your previous AR data. Click on one of the following options:

- Upgrade students without enrolling them:** Click on this option if you want to import the students now and then enroll them in classes later. Then, click the [Next] button and go to step 17.
- Enroll students in a generic class:** Click on this option if you want to enroll *all* of the students in the *same* generic class. After you click the [Next] button, a panel will open to help you create this generic class.
- Create classes based on previous data and enroll students:** Click on this option if you want to enroll the students into classes that are created based on the information in the data folder or export file. After you click the [Next] button, the **How to Create Classes** panel will appear next. This panel reminds you that your new classes will be based on teacher name. However, it lets you decide if you would also like to base the class groupings on section, grade, or both. Check the boxes for the options you need. (To check a box or remove a check, click in the box.) The class names will reflect the options



you've chosen. For example, a class based on teacher John Smith, grade 5, and section Blue would be called "JohnSmith BLUE(5)." When you have finished choosing the options, click the [Next] button. The next panel (**Enter New Password**) asks you to enter a password that will be used for all of your new classes. You can use the default password shown or change the password. When you have finished, click the [Next] button.

17. In the **Begin Upgrade Process** panel, click the [Upgrade] button. Accelerated Reader will upgrade your data.
18. When the upgrade is complete, the program will notify you. Click the [OK] button.
19. Next, the **School Year Preferences** Assistant will start. Follow the instructions in the Assistant to choose your school year dates. For more information, see the School Year preference information in the *Accelerated Reader Software Manual*.

You have finished registering Accelerated Reader software on this computer and upgrading your previous Accelerated Reader data.

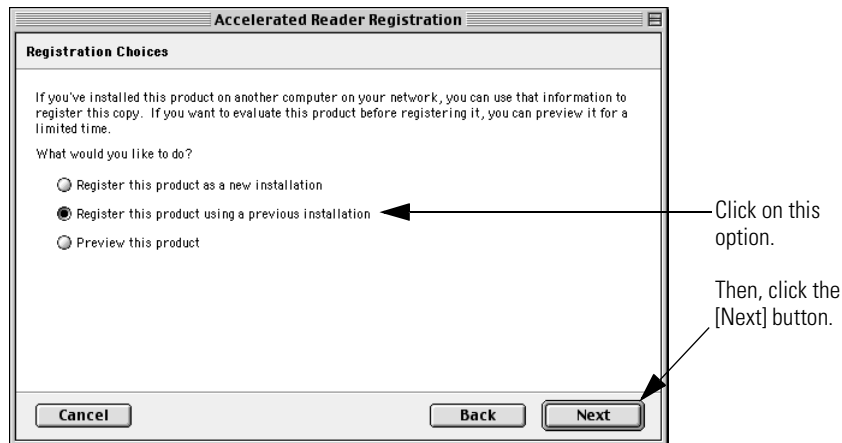
If you are using Accelerated Reader software on computers that will share data across a network, you can now install the software on the other network computers (workstations); then, you can follow the shorter registration procedure that starts on page 20. **Be sure to set up the network rights described on pages 4-5.**

If you are using Accelerated Reader software on a stand-alone computer (any computer that will not be sharing data over a network), you have finished installing and registering the software. Now, use the *Accelerated Reader Software Manual* to learn more about Accelerated Reader.

Registering Accelerated Reader on the Remaining Network Computers (1.x-4.x Upgrades ONLY)

When you install Accelerated Reader software on computers that will share data over a network, you only need to do a complete registration at the first computer. (The instructions for a complete registration start on page 13.) For the remaining networked computers, you can follow the steps below to register the software.

1. After you installed Accelerated Reader and started the Management program, the **Registration Assistant** started. The first panel welcomes you to the Assistant. After you have read the information in this panel, click the [Next] button.
2. The **Registration Choices** panel that appears next gives you three options. Since you have already registered Accelerated Reader software on one of the networked computers (workstations), click on the option called "Register this product using a previous installation." Then, click the [Next] button.



3. The **Previous Installation Registration** panel appears next. This panel lets you select the network data folder that you created when you registered Accelerated Reader software on the first workstation. To select the data folder, start by clicking the [Select Location] button.
4. The dialog box that appears next asks you to select a data location. Follow these steps:
 - a. Click the [Desktop] button.
 - b. Double-click on the drive where the data folder that you created on the first computer is located.
 - c. If you need to open other folders on the drive to find the data folder, double-click on the name of each folder you need to open.
 - d. When the data folder you want to select is shown in the list, you can either double-click on the folder name, or click once on the folder and click the [Open] button.

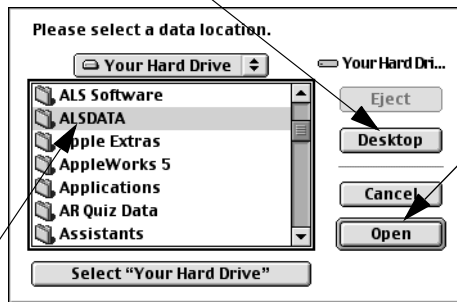
- e. Once the data folder is open and its contents are listed, click the [Select "Your folder name"] button. (The button shows the name of the data folder you selected.)

First:

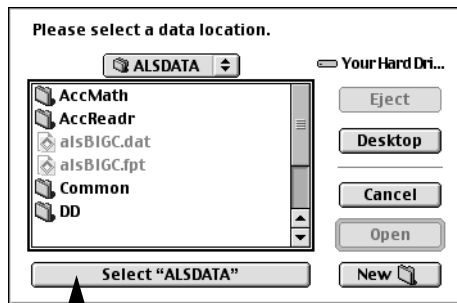
Click the [Desktop] button.

Second:

In this list, double-click on the name of the drive where you can find the data folder. If you need to look inside other folders on that drive, double-click on the folders. When you see the data folder you need to select, click on it once.

**Third:**

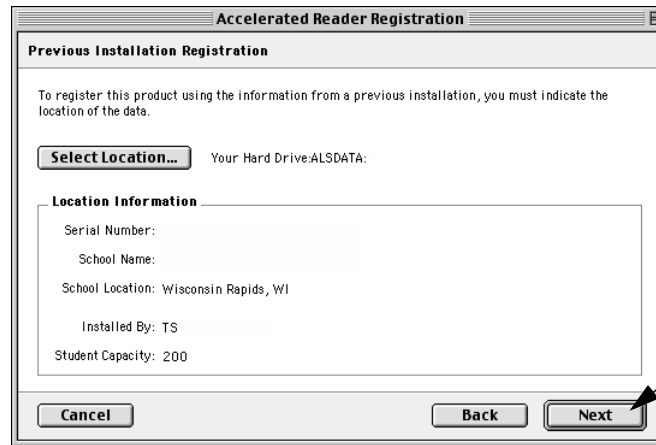
Click the [Open] button.

**Last:**

Click the [Select "Your folder name"] button.

5. At the **Previous Installation Registration** panel, make sure the data location is correct. If the location is incorrect, click the [Select Location] button and repeat the instructions in step 4. If the location shown on the panel is correct, click the [Next] button.

Check the data location and registration information. If you need to choose a different location, click the [Select Location] button.



If the information is correct, click the [Next] button.

6. At the **Registration Completed** panel, click the [Done] button.
7. After you have finished registration, the Management program starts. To enter the Management program, you need to enter your password. In the **Password** dialog box that appears, type this default password: **admin**. (Your password will be shown as •••••.) After you enter the password, click the [OK] button. The Management program will open.

You have finished registering Accelerated Reader software on this network workstation. If you need to install Accelerated Reader software on more workstations, start with the installation instructions on page 7; then, follow this registration procedure, which starts on page 20.

Macintosh: Upgrading from Version 5.1x or 6.x When the Database is Shared by Multiple Computers on a Network

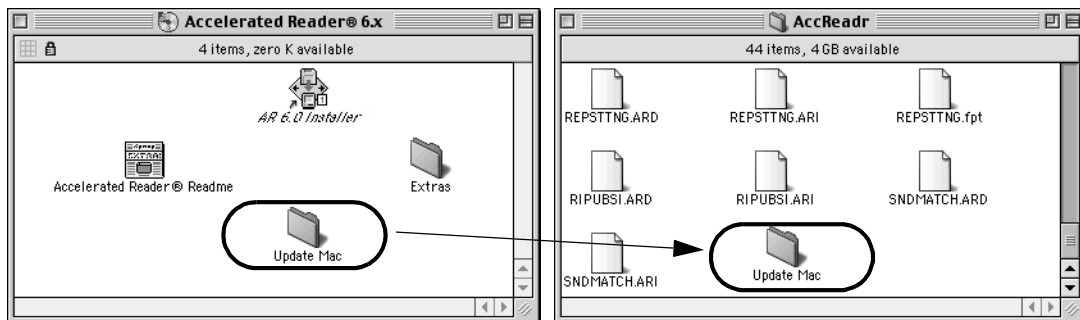
Follow these instructions for each Macintosh computer that you need to upgrade to the latest version of Accelerated Reader. **Before you begin, make sure that all of your computers are using the same data folder (see the Data Location preference).**

1. Insert the Accelerated Reader CD-ROM into your computer's CD-ROM drive.
2. On your computer's desktop, an **Accelerated Reader** window will open, showing the contents of the CD-ROM. *If the window does not open automatically, double-click on the Accelerated Reader CD icon to open it.* Leave the CD window open on your desktop.
3. Now find your Accelerated Reader data folder and open it on your desktop.

IF YOU DON'T KNOW WHERE TO FIND YOUR AR DATA FOLDER

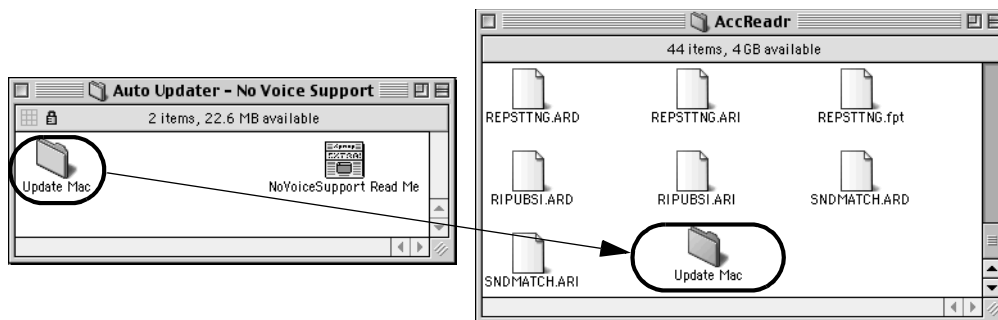
*If you're not sure where your Accelerated Reader data folder is located, start your AR Management program and go to the **School Preferences** screen. Then, click once on the Data Location preference. Your current data location will be shown at the bottom of the screen.*

4. Once the data folder is open, open the **AccReadr** folder that is inside of the data folder.
5. *If you plan to use recorded voice quizzes, or if you might use them in the future, copy the **Update Mac** folder from the CD-ROM to your **AccReadr** folder.*

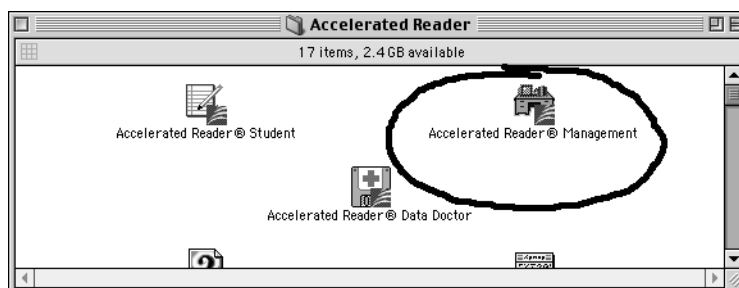


If you do not plan to use recorded voice quizzes now or in the future, follow these steps so that you will not be asked if you want to install support for these quizzes:

- a. Double-click on the **Auto Updater - No Voice Support** folder on the CD-ROM to open the folder.
- b. Inside this folder, you will see an **Update Mac** folder. Copy that folder from the **Auto Updater - No Voice Support** folder to your **AccReadr** data folder.



6. Open the folder where you installed your current version of Accelerated Reader. Then, double-click the **Accelerated Reader® Management** icon to start the program.



7. An alert will appear, asking if you want to continue updating Accelerated Reader. Click the [Update] button.
8. **If you copied the Update Mac folder that was directly on the CD-ROM (not in the Auto Updater - No Voice Support folder),** the installer will check to see if your computer has Quick-Time installed. If not, the program will ask if you want to install support for voice-enabled quizzes. If you plan to use recorded voice quizzes, or if you may do so in the future, click [Yes]. If not, click [No].

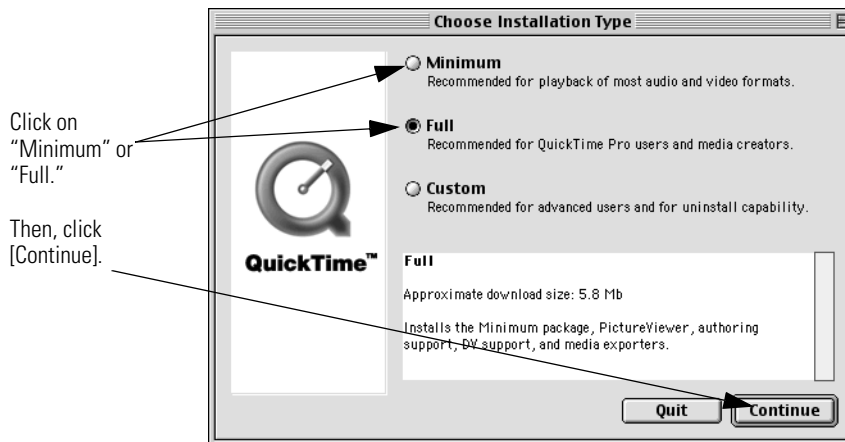
INSTALLING SUPPORT FOR RECORDED VOICE QUIZZES

You only need to install support for recorded voice quizzes if you plan to use this type of quiz. Even if you are not planning to use recorded voice quizzes now, it may be helpful to install support for these quizzes if you may purchase them in the future. To install QuickTime to support the quizzes, click [Yes]. To skip the QuickTime installation and use Accelerated Reader without the recorded voice quizzes, click [No].

9. The Accelerated Reader 6.x software will be installed over your current software version. The program will notify you when AR installation is complete (successful). Click the [Quit] button.
10. If you chose not to install support for recorded voice quizzes, or if the question did not appear when you started installing Accelerated Reader, *skip steps 11 to 16 and go to step 17.*

If you chose to install support for recorded voice quizzes, the QuickTime Setup Assistant will start.

11. In the **Welcome to QuickTime** panel of the Assistant, click the [Continue] button.
12. Next, the QuickTime license agreement will appear. You can read the agreement on your screen by scrolling down through it, or you can click the [Print] button to print it. You can also save a copy of the license by clicking the [Save As] button. When you're ready to go on, click the [Agree] button.
13. Next, the program will ask what type of installation you would like to do. Click on "Minimum" or "Full." Then, click the [Continue] button.



14. If the **Connection Speed** panel appears, click on an option; then, click the [Continue] button.
15. In the **Registration** panel, you can click the [Continue] button. You do not need to enter any registration information.

16. The QuickTime software will be installed. The program will notify you that installation was successful and that the computer needs to be restarted. You must restart the computer before you can use QuickTime with Accelerated Reader. If possible, restart the computer now by clicking the [Restart] button.
17. Now, start the Accelerated Reader Management program again, and click once in the **Welcome** screen.
18. If this is the first computer that you have upgraded, an alert will appear, asking if you would like to upgrade the data. **Once you upgrade your Accelerated Reader data, you cannot use it with older versions of the software. Conversion of the database may take some time if you have a large database.** We recommend that you make a backup copy of your data folder before you upgrade. To continue and upgrade the data, click the [Yes] button. You may also be asked if you would like to update your interest levels. To make sure that the AR screens and reports show the most accurate interest level information, click [Yes]. For more about interest levels, see the Help in the Management program.

BEFORE YOU UPGRADE, READ THIS IMPORTANT NOTE

It is a good idea to back up your current data before upgrading. If you prefer not to upgrade the data right now, click the [No] button; then, follow the instructions in the Assistant that appears to choose or create a different data folder.

19. You can now enter your password to log in and use Accelerated Reader.
20. To upgrade the rest of the Macintosh computers that are sharing the database on your network, start the Accelerated Reader Management **or** Student program on each computer; then, repeat steps 7 to 17 above. For Windows computers on the same network, see the instructions on page 44. To find out more about Accelerated Reader 6.x, see the *Accelerated Reader Software Manual* or the help in the program's **Help** menu.

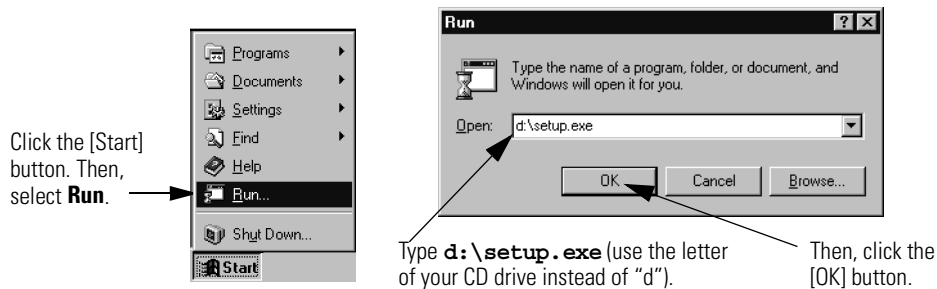
Windows: Upgrading from 1.x-5.01 to 6.x, or Upgrading from 5.1x or an Earlier 6.x Version When the Database Isn't Shared

Installing Accelerated Reader 6.x on Windows Computers

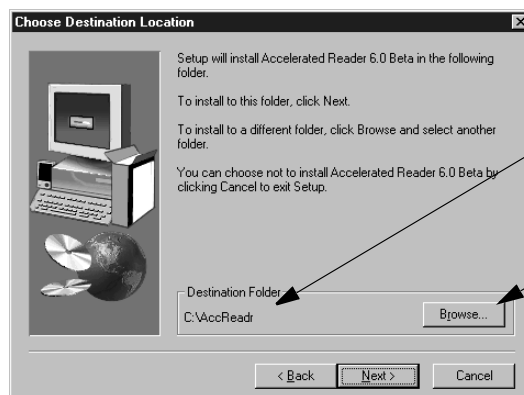
Follow these instructions for each Windows computer that you need to upgrade to the latest version of Accelerated Reader 6.x.

1. Insert the Accelerated Reader CD-ROM in your computer's CD-ROM drive.
2. *If an Explorer window opens on your desktop, showing you the contents of the CD-ROM, double-click on the file called **Setup.exe** and go to step 3.*

*If the window does not open automatically, click the [Start] button; then, select **Run** from the **Start** menu. In the **Run** dialog box, type **d:\setup.exe**. (If your CD-ROM drive is not the **d:** drive, substitute the correct letter for **d:**.) When you are done, click the [OK] button.*



3. The **Accelerated Reader Setup** will begin. When you have read the information in the **Welcome** panel, click the [Next] button to go on.
4. The next panel shows you the folder where the Accelerated Reader software will be installed.



If you are upgrading from Accelerated Reader version 5.x or an earlier version of 6.x:

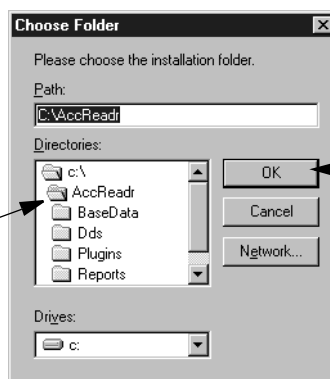
When you upgrade from version 5.x or an earlier version of 6.x, you need to install the latest AR software directly over your current version.

If the **Choose Destination Location** panel is showing the location where your software is currently installed, click the [Next] button and *go to step 5 on page 30*.

If the **Choose Destination Location** panel is **not** showing the location where your software is installed, follow these steps:

- Click the [Browse] button in the **Choose Destination Location** panel.
- Double-click on the correct folder under Directories.
- Check the folder name in the Path field; the program files will be installed directly in this folder. If the folder name is correct, click the [OK] button.
- Click the [Next] button at the **Choose Destination Location** panel and *go to step 5 on page 30*.

To select an existing folder, double-click on the folder you want to select.



Then, click the [OK] button.

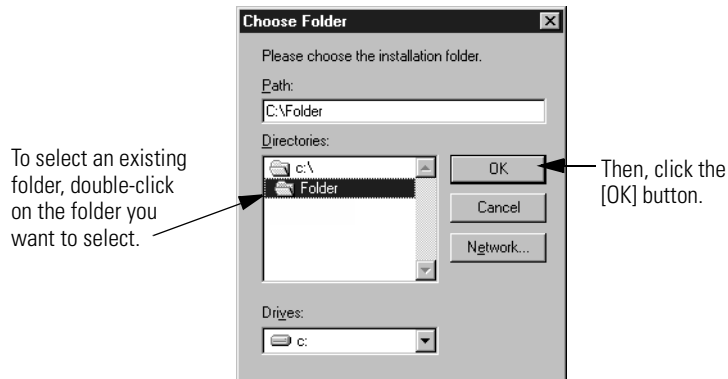
If you are upgrading from versions 1.x-4.x of Accelerated Reader:

You should not install AR 6.x in the same folder where your current version of AR is installed. Instead, install AR 6.x in a different folder on your computer's hard drive.

If you want to use the default installation folder and location, click the [Next] button and *go to step 5 on page 30*.

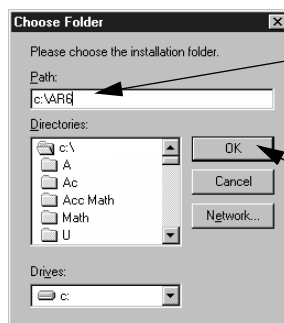
If you want to put the Accelerated Reader software in a different folder that you already have, follow these steps:

- a. Click the [Browse] button. The **Choose Folder** dialog box will open.
- b. Double-click on the correct folder under Directories.
- c. Check the folder name in the Path field; the program files will be installed directly in this folder. If the folder name is correct, click the [OK] button.
- d. Click the [Next] button at the **Choose Destination Location** panel and *go to step 5 on page 30*.



If you want to create a new folder for your Accelerated Reader software, follow these steps:

- a. Type the drive letter, `:`, `\`, and the new folder name in the Path field. (For example, to create a new folder called "ar6" on a hard drive designated C:, type **C:\ar6**.)
- b. Click the [OK] button.
- c. A message will appear, asking if you want to create the folder. Click the [Yes] button.
- d. At the **Choose Destination Location** panel, click the [Next] button and *go to step 5*.



The drive and path will be displayed here. To create a new folder, type the drive letter, \, and the new folder name.

When the "Path" shows the correct drive and folder name, click the [OK] button.

5. The Accelerated Reader software will be installed on your computer.
6. After the Accelerated Reader software is installed, the setup program will check to see if QuickTime is installed on your computer. If not, the program will ask if you want to install support for recorded voice quizzes on this computer. If you plan to use recorded voice quizzes, or if you may use them in the future, click [Yes]. If not, click [No].

If you choose [No], or if this question does not appear, *skip steps 7 to 16 and go to step 17.*

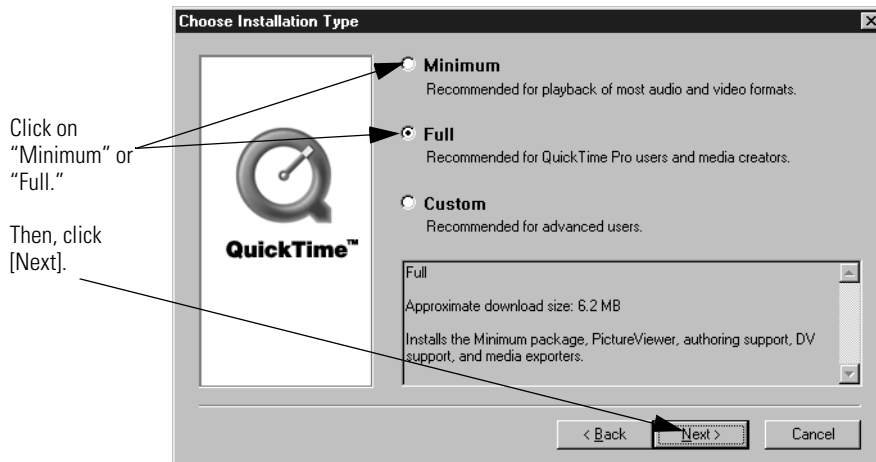
If you choose [Yes], the QuickTime Setup Wizard will start.

INSTALLING SUPPORT FOR RECORDED VOICE QUIZZES

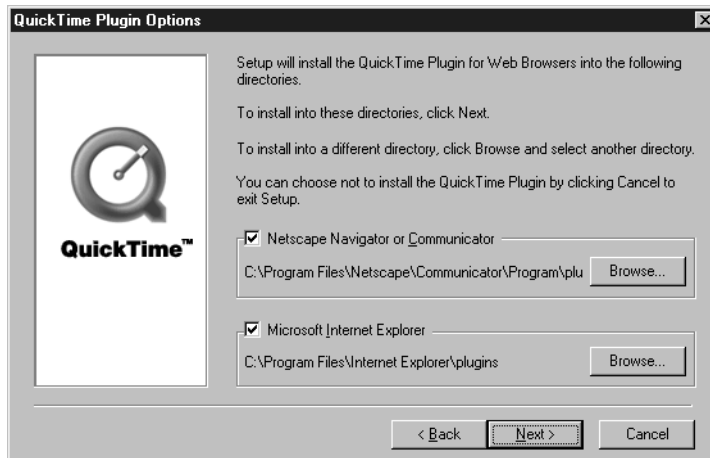
You only need to install support for recorded voice quizzes if you plan to use this type of quiz. Even if you are not planning to use recorded voice quizzes now, it may be helpful to install support for these quizzes if you may purchase them in the future. To install QuickTime to support the quizzes, click [Yes]. To skip the QuickTime installation and use Accelerated Reader without the recorded voice quizzes, click [No].

7. In the **Welcome to QuickTime** panel of the Wizard, click the [Next] button.
8. In the **Welcome** panel, click the [Next] button.
9. Next, the QuickTime license agreement will appear. You can read the agreement on your screen by scrolling down through it, or you can click the [Print] button to print it. When you're ready to go on, click the [Agree] button.

10. Next, the QuickTime **Choose Destination Location** panel will appear. This panel shows you where the QuickTime software will be installed on your computer. If you want to change the location, click the [Browse] button and choose a different location. When you're ready to go on at this panel, click the [Next] button.
11. Next, the program will ask what type of installation you would like to do. Click on "Minimum" or "Full." Then, click the [Next] button.



12. Next, the **Select Program Folder** panel will show you where QuickTime will be placed in your Windows Start menu. To continue, click the [Next] button.
13. The **QuickTime Plugin Options** will show you which browser plug-ins QuickTime will install. If you decide not to install these plug-ins, click in the boxes to remove the checks. When you're ready to go on, click the [Next] button.



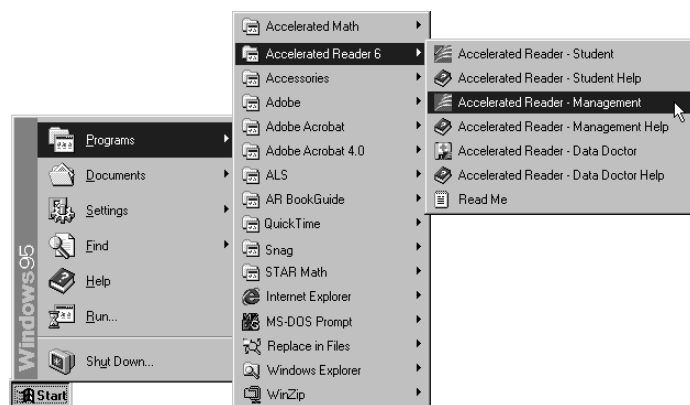
14. In the **Enter Registration** panel, you can click the [Next] button. You do not need to enter any registration information.

15. The QuickTime software will be installed. When the installation is complete, the **Finished** panel will appear. (Wait for this panel to appear, even if the QuickTime program folder appears on your screen.) In the **Finished** panel, you can choose whether you want to view the Read Me file and sample movie. Any checked item will automatically appear. Click in the boxes to remove the checks if you do not want to view the Read Me or movie. When you're ready to go on, click the [Close] button.

IF THE SETUP CAN'T OPEN QUICKTIMEUPDATER.EXE

*If your computer has a previous version of QuickTime, the setup program may notify you that QuickTime cannot open the file QuickTimeUpdater.exe. If this happens, click [Abort]. If the program notifies you that setup was unsuccessful, click the [OK] button. Then, open the Windows Explorer and open the QuickTime folder. In the left pane of Explorer, click the QuickTime folder inside of your Program Files folder. Right-click on the QuickTimeUpdater.exe file and choose **Properties**. In the Attributes section of the **Properties** dialog box, click in the "Read-only" check box to remove the check. Click the [Apply] button; then, click the [OK] button. To reinstall QuickTime, insert the Accelerated Reader CD-ROM in the CD-ROM drive. Then, in the Windows Explorer, double-click on your CD-ROM drive to view the CD-ROM's contents. Find and double-click QuickTime.exe to start the QuickTime installation program.*

16. Close the QuickTime folder that is open on your screen.
17. Next you will see the last panel in the Accelerated Reader Setup Wizard. Click the [Finish] button.
18. Click the [Start] button and select **Programs, Accelerated Reader 6**, and **Accelerated Reader - Management**.



19. The **Accelerated Reader Welcome** screen appears. Click anywhere on the **Welcome** screen or press any key on your keyboard to continue.
20. *If you are upgrading from version 5.x or 6.x of Accelerated Reader, an alert will appear, asking if you would like to upgrade the data. **Once you upgrade your Accelerated Reader data, you cannot use it with an older version of the software. Conversion of the database may take some time if you have a large database.*** We recommend that you make a backup copy of your data folder before you upgrade. To continue and upgrade the data, click the [Yes] button. You may also be asked if you would like to update your interest levels. To make sure that the AR screens and reports show the most accurate interest level information, click [Yes]. For more about interest levels, see the Help in the Management program.

IMPORTANT NOTE FOR UPGRADES FROM VERSION 5.X OR 6.X

It is a good idea to back up your current data before upgrading. If you prefer not to upgrade the data right now, click the [No] button; then, click [Select Location] and choose or create a different data folder.

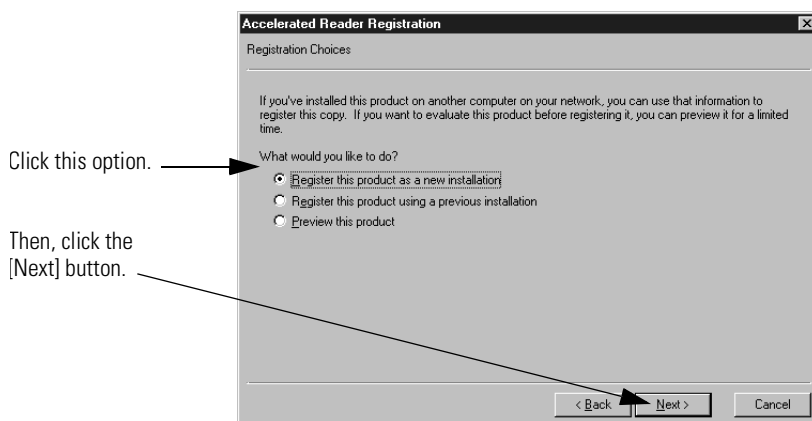
If you have upgraded from version 5.x or 6.x of Accelerated Reader, the upgrade is complete. Now, use the *Accelerated Reader Software Manual* or the help in the program's **Help** menu to find out more about the latest features of Accelerated Reader.

If you are upgrading from version 1.x-4.x of Accelerated Reader, the **Registration Assistant** will open. The first panel welcomes you to the **Registration Assistant**. You need to register Accelerated Reader to create a new data folder and upgrade your previous data. The steps that you need to follow depend on how you will be using Accelerated Reader:

- If you only plan to use Accelerated Reader on this computer, or if you want each computer that uses Accelerated Reader to have its own separate database, go to “Registering Accelerated Reader on Stand-alone Computers or the First Network Computer (1.x-4.x Upgrades ONLY)” on page 34.
- If you plan to have more than one computer share the same Accelerated Reader class, student, and assignment data, do this:
 - a. After you install Accelerated Reader on the first computer on your network, go to “Registering Accelerated Reader on Stand-alone Computers or the First Network Computer (1.x-4.x Upgrades ONLY)” on page 34.
 - b. After you install Accelerated Reader on the other computers on your network, go to “Registering Accelerated Reader on the Remaining Network Computers (1.x-4.x Upgrades ONLY)” on page 41. As you follow these steps, you will select the data folder that you set up from the first network computer.

Registering Accelerated Reader on Stand-alone Computers or the First Network Computer (1.x-4.x Upgrades ONLY)

1. After you installed Accelerated Reader and started the Management program, the **Registration Wizard** started. The first panel welcomes you to the Wizard. After you have read the information in this panel, click the [Next] button.
2. In the **Registration Choices** panel that appears next, you can choose from three options. Since you are registering Accelerated Reader software on a stand-alone computer (or the first of multiple networked computers), click on the option called "Register this product as a new installation." Then, click the [Next] button.



3. The **New Registration** panel appears next. Click in the blanks and type the serial number, school name, school location, and your name (Installed By). You can find this information printed on the one-page installation instructions that you received with the software; the information may also be on the label attached to the Accelerated Reader CD-ROM jewel case. As you enter the serial number, be careful not to confuse "z" and "2," "I" and "1," "s" and "5," or "o" and "0." After you enter the information, click the [Next] button.

Enter the serial number, school name, school location, and your name.

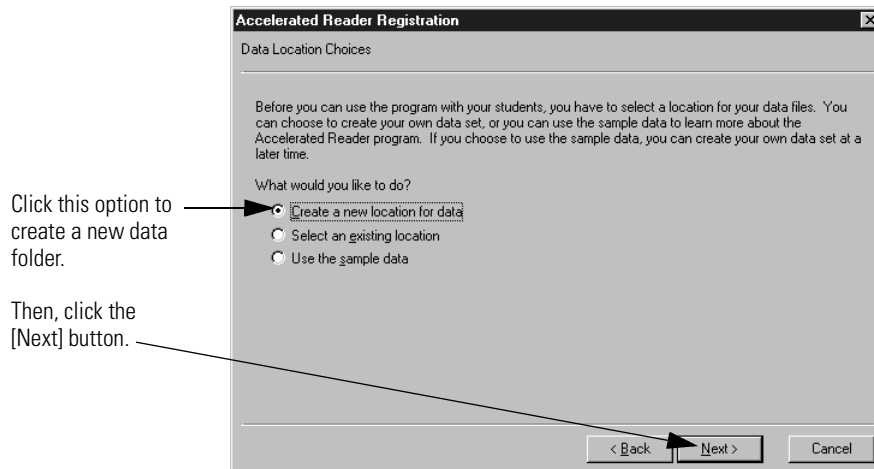
Then, click the [Next] button. →

4. The **Upgrade Code** panel appears next. You can find the four-character Upgrade Code on the one-page installation instructions that you received with the software; the information may also be on the label attached to the Accelerated Reader CD-ROM jewel case. Type in the upgrade code; then, click the [Next] button.
5. The **Data Location Choices** panel appears next. This panel lets you choose a folder for your Accelerated Reader database. We strongly recommend that you create a folder called **ALSDATA** and select that folder as the data location for all of your Renaissance Learning software (such as Accelerated Math). If you've already created a data folder with your other Renaissance Learning software, we suggest that you select that data folder for Accelerated Reader.

If you share a data folder, the students in the database will be available to all of your programs. For example, if you add students in Accelerated Reader, and you share the database with Accelerated Math, the Accelerated Reader students will automatically be included in the Accelerated Math student list.


You need to create a new data folder for AR 6.x or use a folder from other Renaissance Learning software. You cannot use your previous AR data folder.

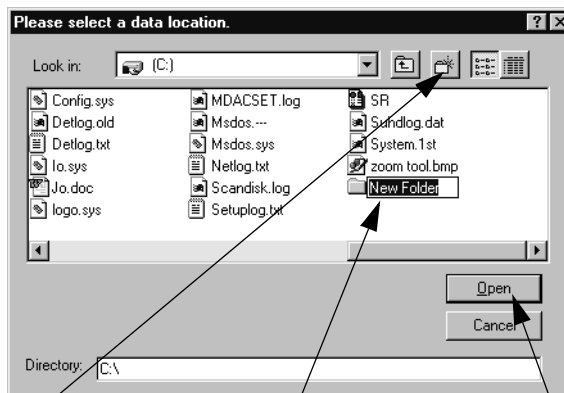
To create a new data folder or to choose one from other Renaissance Learning software that you have never used with Accelerated Reader, click on the option called "Create a new location for data." Then, click the [Next] button.



6. In the **Select Location** panel, you can create or select the folder for your Accelerated Reader database. Start by clicking the [Select Location] button. Then, use the dialog box that opens to select a data location. *If several computers will be sharing data over a network, make sure the data is on a network drive that all of the computers can access.*

To create a new data folder:

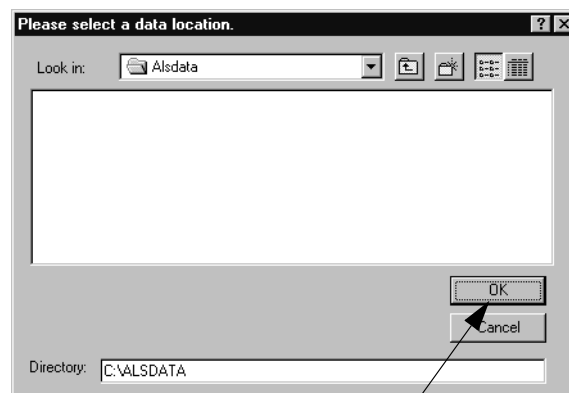
- a. Use the Look-in drop-down menu to select the drive where your data folder will be located.
- b. If you want to put the data folder inside another folder on the drive, double-click the folder name to open it.
- c. Once you are in the drive and directory where you want to create the data folder, click the  (new folder) button.
- d. Type in the new folder name (we recommend **ALSDATA**) and press the <Enter> key.
- e. Click the [Open] button.
- f. Click the [OK] button to select the new folder. *Go to step 7 on page 37.*



First:
Click this button to
create a new folder.

Second:
Type in the new folder name
and press <Enter>.

Third:
Click the [Open] button.



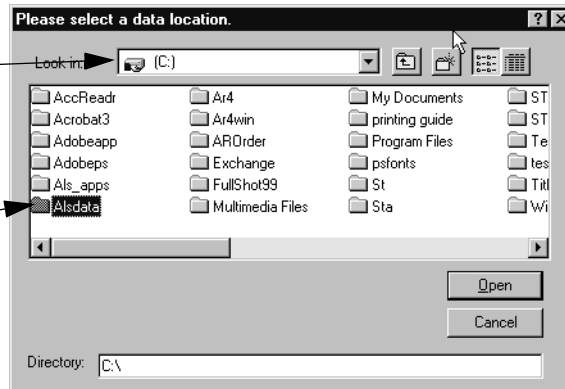
Last:
Click the [OK] button.

To select a data folder that already exists (from other Renaissance Learning software):

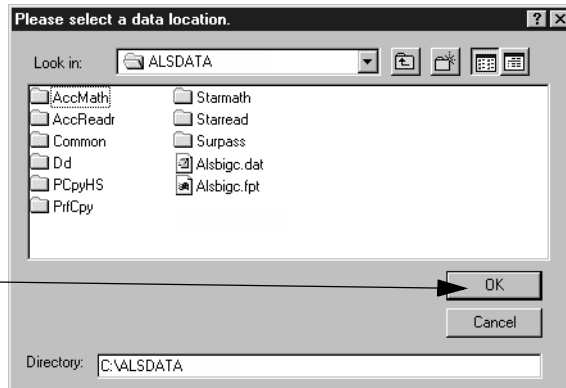
- a. Use the Look-in drop-down menu to select the drive where you can find the data folder.
- b. If the data folder is inside another folder, double-click that folder's name to open it.
- c. When you can see the data folder in the list, double-click on it.
- d. Click the [OK] button to select the folder. *Go to step 7.*

First:
Use this drop-down menu to select the drive where you can find the data folder.

Second:
Double-click on the folder you want to use for data.



Last:
Click the [OK] button.

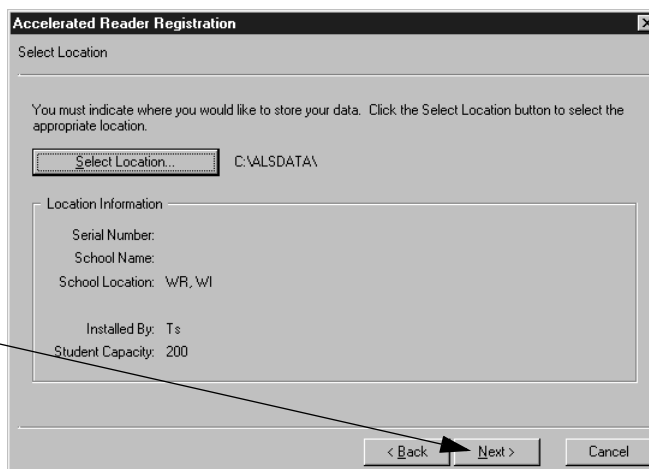


7. At the **Select Location** panel, make sure the data location and the registration information are correct. If the data location is not correct, click the [Select Location] button and repeat the instructions in step 6. If everything on the panel is correct, click the [Next] button.

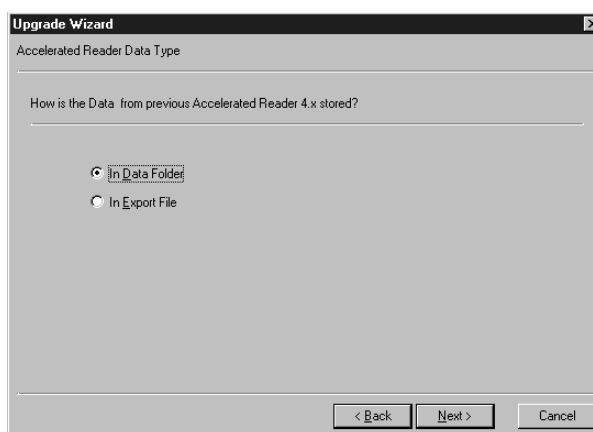
Check the data location and registration information.

If it is correct, click the [Next] button.

If not, click [Select Location] and repeat step 6.



8. At the **Registration Completed** panel, click the [Finish] button.
9. After you have finished registration, the Management program starts. To enter the program, you need to enter your password. In the **Password** dialog box that appears, type this default password: **admin**. (Your password will be shown as *.*.*.*.) When you have entered the password, click the [OK] button. The Management program will open.
10. When the Quick Tips appear, click the [OK] button.
11. Next, you will be asked if you would like to upgrade data from a previous version of Accelerated Reader. Click the [Yes] button. The **Upgrade Wizard** will start.
12. Read the information in the **Welcome** panel; then, click the [Next] button.
13. In the **Accelerated Reader Data Type** panel, click on one of the following options:
 - **In Data Folder:** Click on this option if you have been using Accelerated Reader version 2.x-4.x. Choosing this option will let you upgrade the “Data” folder that is usually inside of your AR program folder. When you’re ready to go on, click the [Next] button.
 - **In Export File:** Click on this option if you have an export file that you created using version 1.x-4.x. By choosing this option, you can upgrade the data from your export file instead of a 2.x-4.x data folder.



14. At the panel called **Select Previous Accelerated Reader Data**, click the [Select Data] button. Then, find and open your AR data folder or export file. (The dialog box that you use to find and open your data is similar to the one you used to create or choose your AR 6.x data folder.)

If you are upgrading using a data folder, find the folder. It is usually inside of your AR 2.x-4.x program folder. Open the Data folder; then, click the [Select] button at the bottom of the dialog box.

If you are upgrading using an export file, find the file. Then, click on it once and click the [Open] button.

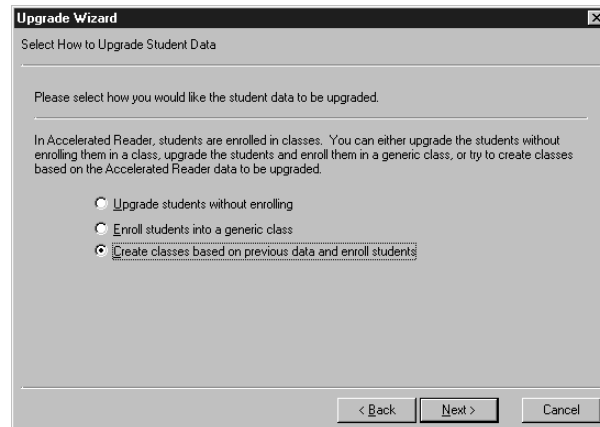
15. *If you are upgrading from an export file, skip this step and go to step 16.*

*If you are upgrading from a data folder, the **Application Information** panel will appear next. In this panel, you can choose the data that you want to upgrade (quizzes, preferences, calendar, and student data). Check the box for each item you want to upgrade. To check a box or remove a check, click in the box. When you're ready to go on, click the [Next] button.*

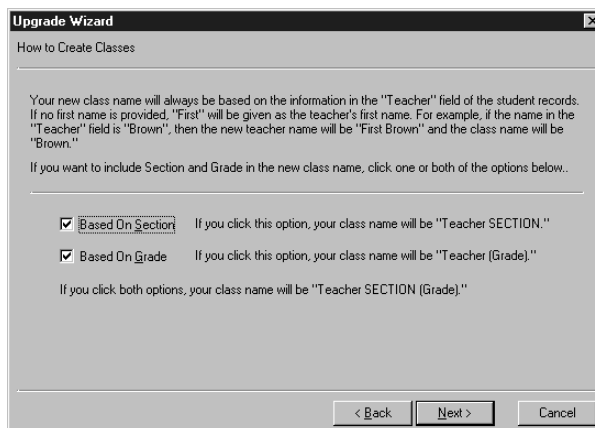


16. The next panel lets you decide how you want to handle enrollment for the students in your previous AR data. Click on one of the following options:

- **Upgrade students without enrolling them:** Click on this option if you want to import the students now and then enroll them in classes later. Then, click the [Next] button and go to step 17.
- **Enroll students in a generic class:** Click on this option if you want to enroll *all* of the students in the *same* generic class. After you click the [Next] button, a panel will open to help you create this generic class.



- Create classes based on previous data and enroll students:** Click on this option if you want to enroll the students into classes that are created based on the information in the data folder or export file. After you click the [Next] button, the **How to Create Classes** panel will appear next. This panel reminds you that your new classes will be based on teacher name. However, it lets you decide if you would also like to base the class groupings on section, grade, or both. Check the boxes for the options you need. (To check a box or remove a check, click in the box.) The class names will reflect the options you've chosen. For example, a class based on teacher John Smith, grade 5, and section Blue would be called "JohnSmith BLUE(5)." When you have finished choosing the options, click the [Next] button. The next panel (**Enter New Password**) asks you to enter a password that will be used for all of your new classes. You can use the default password down or change the password. When you have finished, click the [Next] button.



- In the **Begin Upgrade Process** panel, click the [Upgrade] button. Accelerated Reader will upgrade your data.
- When the upgrade is complete, the program will notify you. Click the [OK] button.
- Next, the **School Year Preferences** Wizard will start. Follow the instructions in the Wizard to choose your school year dates. For more information, see the School Year preference information in the *Accelerated Reader Software Manual*.

You have finished registering Accelerated Reader software on this computer and upgrading your previous Accelerated Reader data.

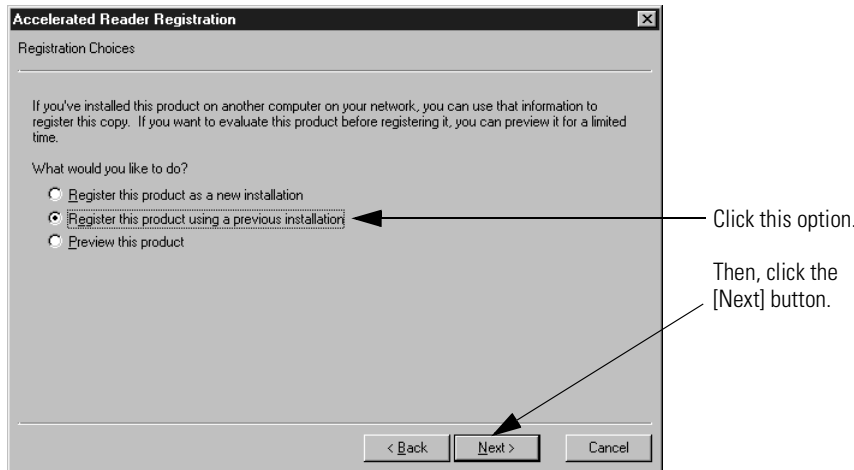
If you are using Accelerated Reader software on computers that will share data across a network, you can now install the software on the other network computers (workstations); then, you can follow the shorter registration procedure that starts on page 41. Be sure to set up the network rights described on pages 4-5.

*If you are using Accelerated Reader software on a stand-alone computer (any computer that will not be sharing data over a network), you have finished installing and registering the software. Now, use the *Accelerated Reader Software Manual* to learn more about Accelerated Reader software.*

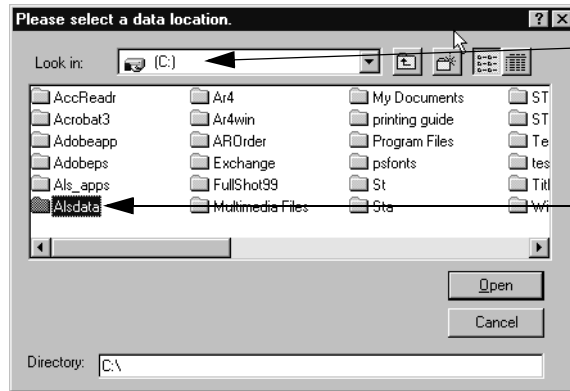
Registering Accelerated Reader on the Remaining Network Computers (1.x-4.x Upgrades ONLY)

When you install Accelerated Reader 6.x software on computers that will share data over a network, you only need to do a complete registration on the first computer. (The instructions for a complete registration start on page 34.) For the remaining networked computers, you can follow the steps below to register the software.

1. After you installed Accelerated Reader and started the Management program, the **Registration Wizard** started. The first panel welcomes you to the Wizard. After you have read the information in this panel, click the [Next] button.
2. The **Registration Choices** panel that appears next gives you three options. Since you have already registered Accelerated Reader software on one of the networked computers (workstations), click on the option called "Register this product using a previous installation." Then, click the [Next] button.



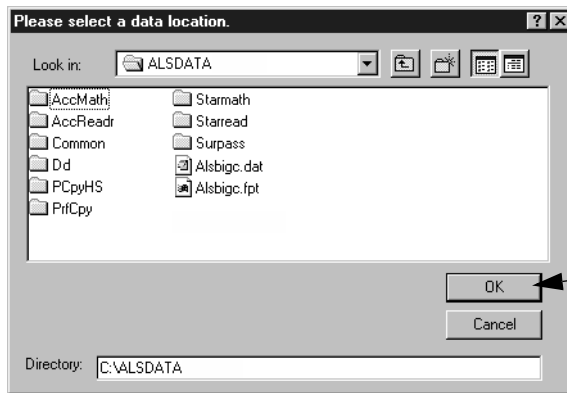
3. The **Previous Installation Registration** panel appears next. This panel lets you select the network data folder that you created when you registered Accelerated Reader software on the first workstation. To select a data folder, start by clicking the [Select Location] button.
4. The dialog box that appears next asks you to select the data location. Follow the steps below.
 - a. Use the Look in drop-down menu to select the drive where you can find the data folder that you created or selected on the first computer.
 - b. If the data folder is inside another folder, double-click that folder's name to open it.
 - c. When you can see the data folder in the list, double-click it.
 - d. Click the [OK] button to select the folder.

**First:**

Use this drop-down menu to select the drive where you can find the data folder.

Second:

Double-click on the folder you want to use for data.

**Last:**

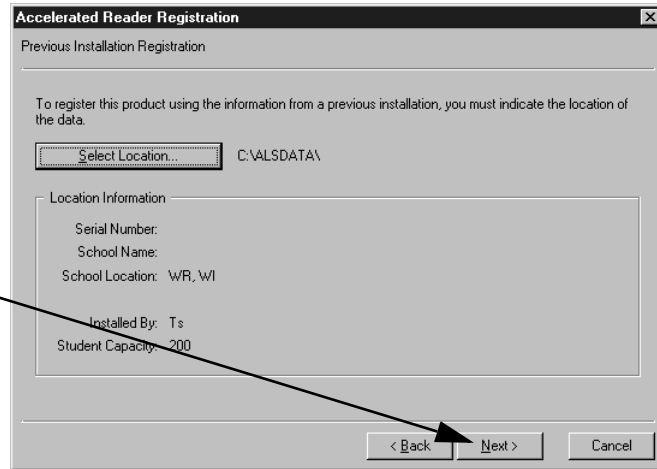
Click the [OK] button.

5. At the **Previous Installation Registration** panel, make sure the data location is correct. If the location is incorrect, click the [Select Location] button and repeat the instructions in step 4. If the location shown on the panel is correct, click the [Next] button.

Check the data location and registration information.

If it is correct, click the [Next] button.

If not, click [Select Location] and repeat step 4.



6. At the **Registration Completed** panel, click the [Finish] button.
7. After you have finished registration, the Management program starts. To log in, you need to enter your password. At the **Password** dialog box that appears, type this default password: **admin**. (Your password will be shown as *****) Then, click the [OK] button. The Management program will open.

You have finished registering Accelerated Reader software on this network workstation. If you need to install Accelerated Reader software on more workstations, start with the installation instructions that start on page 27; then, follow this registration procedure, which starts on page 41.

Windows: Upgrading from Version 5.1x or 6.x When the Database is Shared by Multiple Computers on a Network

Follow these instructions for each Windows computer that you need to upgrade to the latest version of Accelerated Reader. **Before you begin, make sure that all of your computers are using the same data folder (see the Data Location preference).**

1. Insert the Accelerated Reader CD-ROM in your computer's CD-ROM drive.
2. *If an Explorer window opens on your desktop, showing you the contents of the CD-ROM, go on to step 3.*
If the window does not open automatically, start the Windows Explorer and double-click on the CD-ROM name to view its contents.
3. *If you plan to use recorded voice quizzes, or if you might use them in the future, click on the **UpdateW** folder on the CD-ROM and copy it.*
*If you do not plan to use recorded voice quizzes now or in the future, double-click on the **AutoUpdater-NoVoiceSupport** folder to open it. Then, click on the **UpdateW** folder inside of that folder and copy it.*
4. In the Windows Explorer, find and open your Accelerated Reader data folder.

IF YOU DON'T KNOW WHERE TO FIND YOUR AR DATA FOLDER

*If you're not sure where your Accelerated Reader data folder is located, start your AR Management program and go to the **School Preferences** screen. Then, click once on the Data Location preference. Your current data location will be shown at the bottom of the screen.*

5. Once the data folder is open, you'll see an **AccReadr** folder inside of it. Double-click on the **AccReadr** folder to open it.
6. Paste the **UpdateW** folder that you copied into the **AccReadr** folder (to do this, you can click on the **Edit** menu and choose **Paste**).

7. To start your Accelerated Reader Management program, click on the [Start] button and select **Programs, Accelerated Reader 5** or **Accelerated Reader 6**, and **Accelerated Reader - Management**.
8. The program will find the upgrade and begin installing AR 6.x over your current version of AR.
9. **If you copied the Update W folder that was directly on the CD-ROM (not inside the AutoUpdater-NoVoiceSupport folder),** the setup program will check to see if QuickTime is installed on your computer. If not, the program will ask if you want to install support for recorded voice quizzes on this computer. If you plan to use recorded voice quizzes, or if you may use them in the future, click [Yes]. If not, click [No].

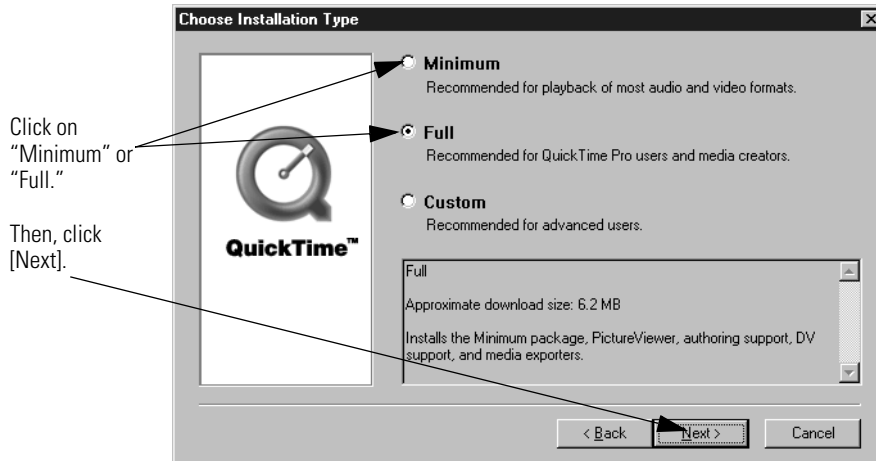
If you choose [No], or if the question does not appear, *skip steps 10 to 19 and go to step 20.*

If you choose [Yes], the QuickTime Setup Wizard will start.

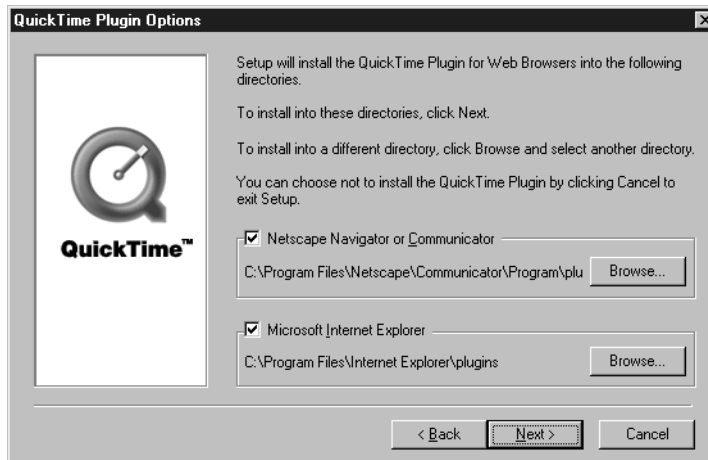
INSTALLING SUPPORT FOR RECORDED VOICE QUIZZES

You only need to install support for recorded voice quizzes if you plan to use this type of quiz. Even if you are not planning to use recorded voice quizzes now, it may be helpful to install support for these quizzes if you may purchase them in the future. To install QuickTime to support the quizzes, click [Yes]. To skip the QuickTime installation and use Accelerated Reader without the recorded voice quizzes, click [No].

10. In the **Welcome to QuickTime** panel of the Wizard, click the [Next] button.
11. In the **Welcome** panel, click the [Next] button.
12. Next, the QuickTime license agreement will appear. You can read the agreement on your screen by scrolling down through it, or you can click the [Print] button to print it. When you're ready to go on, click the [Agree] button.
13. Next, the QuickTime **Choose Destination Location** panel will appear. This panel shows you where the QuickTime software will be installed on your computer. If you want to change the location, click the [Browse] button and choose a different location. When you're ready to go on at this panel, click the [Next] button.
14. Next, the program will ask what type of installation you would like to do. Click on "Minimum" or "Full." Then, click the [Next] button.



15. Next, the **Select Program Folder** panel will show you where QuickTime will be placed in your Windows Start menu. To continue, click the [Next] button.
16. The **QuickTime Plugin Options** will show you which browser plug-ins QuickTime will install. If you decide not to install these plug-ins, click in the boxes to remove the checks. When you're ready to go on, click the [Next] button.

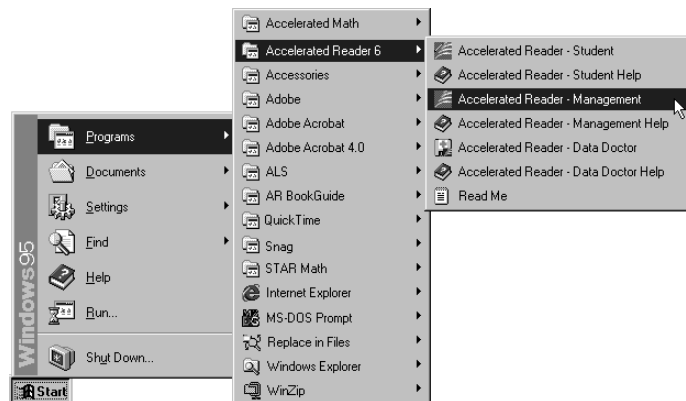


17. In the **Enter Registration** panel, you can click the [Next] button. You do not need to enter any registration information.
18. The QuickTime software will be installed. When the installation is complete, the **Finished** panel will appear. (Wait for this panel to appear, even if the QuickTime program folder appears on your screen.) In the **Finished** panel, you can choose whether you want to view the Read Me file and sample movie. Any checked item will automatically appear. Click in the boxes to remove the checks if you do not want to view the Read Me or movie. When you're ready to go on, click the [Close] button.

IF THE SETUP CAN'T OPEN QUICKTIMEUPDATER.EXE

*If your computer has a previous version of QuickTime, the setup program may notify you that QuickTime cannot open the file QuickTimeUpdater.exe. If this happens, click [Abort]. If the program notifies you that setup was unsuccessful, click the [OK] button. Then, open the Windows Explorer and open the QuickTime folder. In the left pane of Explorer, click the QuickTime folder inside of your Program Files folder. Right-click on the QuickTimeUpdater.exe file and choose **Properties**. In the Attributes section of the **Properties** dialog box, click in the "Read-only" check box to remove the check. Click the [Apply] button; then, click the [OK] button. To reinstall QuickTime, insert the Accelerated Reader CD-ROM in the CD-ROM drive. Then, in the Windows Explorer, double-click on your CD-ROM drive to view the CD-ROM's contents. Find and double-click QuickTime.exe to start the QuickTime installation program.*

19. Close the QuickTime folder that is open on your screen.
20. Next you will see the last panel in the Accelerated Reader Setup Wizard. Click the [Finish] button.
21. Click the [Start] button and select **Programs, Accelerated Reader 6, and Accelerated Reader - Management**.



22. The **Accelerated Reader Welcome** screen appears. Click anywhere on the **Welcome** screen or press any key on your keyboard to continue.

- 23.** If this is the first computer that you have upgraded, an alert will appear, asking if you would like to upgrade the data. **Once you upgrade your Accelerated Reader data, you cannot use it with older versions of the software. Conversion of the database may take some time if you have a large database.** We recommend that you make a backup copy of your data folder before you upgrade. To continue and upgrade the data, click the [Yes] button. You may also be asked if you would like to update your interest levels. To make sure that the AR screens and reports show the most accurate interest level information, click [Yes]. For more about interest levels, see the Help in the Management program.

BEFORE YOU UPGRADE, READ THIS IMPORTANT NOTE

It is a good idea to back up your current data before upgrading. If you prefer not to upgrade the data right now, click the [No] button; then, follow the instructions in the Wizard that appears to choose or create a different data folder.

- 24.** You can now enter your password to log in and use Accelerated Reader.
- 25.** To upgrade the rest of the Windows computers that are sharing the database on your network, start the Accelerated Reader Management **or** Student program on each computer; then, repeat steps 8 to 20 above. For Macintosh computers on the same network, see the instructions on page 23. To find out more about Accelerated Reader 6.x, see the *Accelerated Reader Software Manual* or the help in the program's **Help** menu.



Renaissance Learning

P.O. Box 8036, Wisconsin Rapids, WI 54495-8036

(800) 338-4204

Fax: (715) 424-4242

® Email: answers@renlearn.com

Web: www.renlearn.com