

**Animo**

# The complete animation solution

From Cambridge Animation Systems



# Animo

## The complete animation solution

Animo, available for Microsoft Windows NT, Windows 2000 and Mac OS X, offers a comprehensive solution to digital animation production. Animo consists of a suite of programs packaged to give you the flexibility and power you need to complete productions efficiently, cost-effectively and to the highest quality.



# Animo

## Increasing your productivity

Animo is universally recognized for its high levels of productivity, whether for HDTV, film, TV, video, multimedia, or games.

Animo gives you:

- Reliability
- Flexibility
- Superior quality
- Multiple formats and resolutions
- Speed and cost effectiveness

A single system running a typical Animo installation can scan over 800 drawings a day, or paint, composite and deliver up to five minutes of broadcast quality video at the desktop.

A production network of 12 systems can zip through a 22,000 drawing episode in less than 10 days. And of course, Animo gives you all the advantages of digital production.



*The new animated feature film 'Osmosis Jones'  
courtesy of Warner Bros Feature Animation*

## The Animo suite

### includes tools for:

- High quality scanning of drawings and backgrounds
- Creating easy-to-use color models and exceptionally fast painting of drawings, including a high degree of automation
- Compositing, including easy timing tools, ratioed keyframes, and interactive multiplane camera
- A wide range of special effects such as blurs, ripples, lighting, and many others
- Rendering for video, film and direct for Internet (Macromedia® Flash™)



*A wide range of special effects such as blurs, ripples, lighting, and many others*

*With the new **Animo** things are even better ...*

# New features in Animo

## Flash output

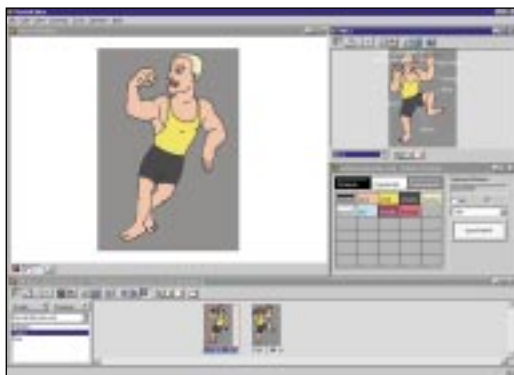
Scenes can be output with sound as Macromedia® Flash™ (.swf) files, with a high degree of control over the output. Existing scenes can be repurposed immediately for Flash use, or optimized using new nodes and options to give the best quality output.



*Scenes can be output as Macromedia Flash™ (.swf) files*

## Vectorized drawings

Animo is primarily bitmap based but you can now choose to produce your animation using bitmaps or vectors. Drawings are vectorized in ImageProcessor or Director and can be adjusted in the new VectorEditor application. The vectorized drawings are primarily used for Flash output, but can also be applied in traditional scenes to achieve a different, smoother line style.



*Vectorized drawings*

## Off peg scanning

Registration of scanned drawings is now more accurate than ever with support for flatbed scanning without the use of a pegbar.

## TWAIN scanning

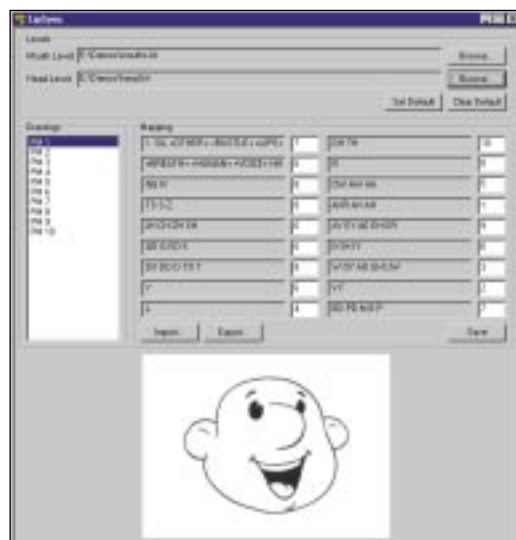
All Animo scanning applications (ScanLevel, ScanBackground and PencilTester) now support TWAIN scanner drivers as well as ISIS, vastly increasing the range of scanners supported by Animo.

## Color line scanning

Drawings can now be scanned in color to provide line coloration information to painters using InkPaint (for example, blend lines for character tones).

## Lipsync in SoundBreakdown

SoundBreakdown now features interactive replay of phonetic breakdowns using your own head and mouth drawings.



*New LipSync window in SoundBreakdown*

### Director speed enhancements

- Scenes open much faster than before
- Drawing Window images are cached for faster re-rendering while editing scenes
- Drawing Window rendering and previewing can be disabled for speed
- Quick submission of scenes for batch rendering using read-only option

### New Scene III

- Faster rendering of image planes
- Create 3D worlds in Director
- 3D World View displayed in 4 panes or single pane

### Comprehensive On-line Help

- Search entire on-line help system
- See manuals on screen

### Plus other improvements, including

- Anamorphic output and 14:9/4:3 cropping for 16:9 scenes
- Completely rewritten batch rendering system
- Support for loading line art (one bit) images into levels
- Text export of phonetic breakdowns for third-party use
- Redesigned Replayer application
- 3:2 pull down option enables rendering of 24 fps scenes at 30 fps



## An unrivaled range of tools

### Scanning

Animo delivers full quality 8-bit grayscale with fast automatic registration of punched drawings. Oversized colored backgrounds can be scanned in sections and spliced.

### Inking and painting

Animo offers the fastest available tools, including automatic gap fixing, autofill, and extensive checking tools. Painting can be completed before final colors are decided – multiple palettes and powerful color correction tools allow last minute changes. Automatic palette interpolation allows a vast range of special effects to be generated by re-using drawings with no need to repaint.



*Inking and painting*

### Intuitive scene planning, building and replaying

Elements and effects can be dragged and dropped interactively, or explicit values can be input via the keyboard. You can view the scene structure in interlinked windows that display the current frame and the timing sheet simultaneously. Changes made in one view are automatically updated in all windows.



Animo also has a powerful vector system that allows you to create animated props, simple characters, text and mattes. Shapes and colors can be blended and automatically inbetweened.

### Regging

A unique, innovative solution to complex cel-to-cel and cel-to-background registration. Animo removes problems created by inaccurate match lines and gives perfect registration.



*The Lampies, Spider Eye*

### Rendering

Animo gives you the choice of standalone local output or networked machines, using batch commands or local rendering either to files or directly to digital disk recorders manufacturers including DPS, SDL and Accom.

### Advanced animation tools

Additional software provides extra tools for:

- Integrating 2D and 3D
- Capturing and testing rough animation drawings, using PencilTester the scene planning and line test tool



*Commercial for: 'The Accident Group'*

*Production Company: Equinox Film/TV Productions*

*Animation: 422 Animators: Chris Birks and Darren Oakes*

### Giving 3D animation a cartoon cel look

Inkworks is Cambridge Animation Systems' plug-in to Maya and 3D Studio MAX.

With Inkworks, you can:

- Render cartoon-shaded 3D animation directly within MAX or Maya
- Assign cartoon materials to 3D models
- Select the color and extent of base, shade and highlight areas
- Control blending between colored areas.
- Control ink lines on edges, silhouettes, and folds
- Independently animate line color, line thickness, and paint color
- Export as a 3D world or an Ink&Paint level for use in Animo



## Integrating 2D and 3D

When coupled with the Scene III plug-in, Animo lets you add cartoon-shaded 3D objects to a 2D scene.

- Scene III is our unique 3D/2D integration module. This new module allows users to include and edit cartoon shaded 3D elements in 2D scenes
- Scene III lets users integrate cartoon shaded models and props (cartoon materials assigned using the Inkworks plug-in for Alias|Wavefront's Maya or Autodesk's 3D Studio MAX) into 2D scenes
- Model data, including positioning, lights, cameras and material information is imported from a 3D scene. A range of 3D tools allow minor adjustments to be made to the imported 3D object such as translation, scaling and rotation of 3D objects, and the addition of lights and cameras. The F Curve Editor allows modification of the 3D animation without returning to the original 3D package
- Animo filter and effect nodes can be applied as normal to cartoon shaded 3D worlds. The whole scene is rendered out in traditional cartoon style

Oscar® 2002 Nomination for Best Animated Short Film  
*Give Up Yer Aul Sins* Brown Bag Films Production  
Cathal Gaffney and Darragh O'Connell

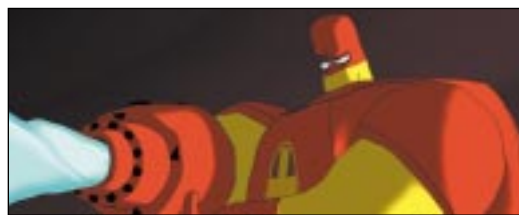
"We chose Animo for its speed and ease of use in painting large numbers of drawings," says Brian Gilmore, animator.

"Animo gave us the flexibility to keep the artist's line from the hand-drawn animation and to change details at the last minute."

**Brown Bag Films Production**

*"Osmosis Jones has taken 2D and 3D integration to the next level which could only be made possible with Animo software ... Each character in Osmosis was created using highly complex macros, duplicating each character level palette up to twelve times."*

*Warner Bros. Feature Animation*



*Animo helped Spider Eye create visual moods for Oscar-Winning 'Father and Daughter'*



Oscar® 2002 Nomination for Best Animated Short Film  
*Give Up Yer Aul Sins*



Because Cambridge Animation Systems understands the financial constraints on animation studios, we offer very attractive pricing options, with the flexibility to help you take advantage of our digital production technology. Options include floating licenses as standard, to enable you to use a single license on any PC on your network, specially priced plug-ins, and comprehensive installation, training and support worldwide.



*"Although the Father and Daughter is stylistically simple, it was difficult to achieve and would have been impossible to create traditionally," says John Brooks, producer with Spider Eye. (London, UK)*

**Oscar 2001 Best Short Animation**



**The Iron Giant, Warner Bros. Feature Animation**



**Kalinka and Friends, Siluett Filmutveckling**

*"Animo makes our work so easy. We save a lot of time and money"*

# Animo

Cambridge Animation Systems has been pioneering the development of cutting edge 2D cartoon animation software since its foundation in 1990.

We are totally committed to the world of animation and to the delivery of innovative solutions, worldwide applications and high quality support.

Animo, our complete 2D software package, is the industry standard 2D digital animation tool used to produce features, TV series, commercials and computer games with an installed base of more than 3,000 seats in over 50 countries.

We recently broadened our product base through the development of highly innovative animation software for both 2D and 3D product ranges, giving artists complete freedom to create animation for the web.

Based in Cambridge, England, Cambridge Animation Systems remains committed to pushing the boundaries of animation and broadcast technology and to delivering excellent value to animators around the world.

Cambridge Animation Systems  
Diomed House  
Cambridge Research Park  
Ely Road  
Cambridge  
CB5 9TE  
England

Tel: +44 (0)1223 204020  
Fax: +44 (0)1223 204030

[www.cambridgeanimation.com](http://www.cambridgeanimation.com)  
[sales@cambridgeanimation.com](mailto:sales@cambridgeanimation.com)  
[support@cambridgeanimation.com](mailto:support@cambridgeanimation.com)

