

GPIB

Getting Started with Your GPIB-SCSI-A and the NI-488.2™ Software for MacOS

July 1997 Edition
Part Number 320468C-01



Internet Support

support@natinst.com

E-mail: info@natinst.com

FTP Site: ftp.natinst.com

Web Address: <http://www.natinst.com>



Bulletin Board Support

BBS United States: (512) 794-5422

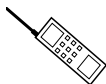
BBS United Kingdom: 01635 551422

BBS France: 01 48 65 15 59



Fax-on-Demand Support

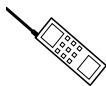
(512) 418-1111



Telephone Support (U.S.)

Tel: (512) 795-8248

Fax: (512) 794-5678



International Offices

Australia 03 9879 5166, Austria 0662 45 79 90 0, Belgium 02 757 00 20,
Canada (Ontario) 905 785 0085, Canada (Québec) 514 694 8521, Denmark 45 76 26 00,
Finland 09 725 725 11, France 01 48 14 24 24, Germany 089 741 31 30,
Hong Kong 2645 3186, Israel 03 5734815, Italy 02 413091, Japan 03 5472 2970,
Korea 02 596 7456, Mexico 5 520 2635, Netherlands 0348 433466, Norway 32 84 84 00,
Singapore 2265886, Spain 91 640 0085, Sweden 08 730 49 70, Switzerland 056 200 51 51,
Taiwan 02 377 1200, United Kingdom 01635 523545

National Instruments Corporate Headquarters

6504 Bridge Point Parkway Austin, TX 78730-5039 Tel: (512) 794-0100

Important Information

Warranty

The GPIB-SCSI-A is warranted against defects in materials and workmanship for a period of two years from the date of shipment, as evidenced by receipts or other documentation. National Instruments will, at its option, repair or replace equipment that proves to be defective during the warranty period. This warranty includes parts and labor.

The media on which you receive National Instruments software are warranted not to fail to execute programming instructions, due to defects in materials and workmanship, for a period of 90 days from date of shipment, as evidenced by receipts or other documentation. National Instruments will, at its option, repair or replace software media that do not execute programming instructions if National Instruments receives notice of such defects during the warranty period. National Instruments does not warrant that the operation of the software shall be uninterrupted or error free.

A Return Material Authorization (RMA) number must be obtained from the factory and clearly marked on the outside of the package before any equipment will be accepted for warranty work. National Instruments will pay the shipping costs of returning to the owner parts which are covered by warranty.

National Instruments believes that the information in this manual is accurate. The document has been carefully reviewed for technical accuracy. In the event that technical or typographical errors exist, National Instruments reserves the right to make changes to subsequent editions of this document without prior notice to holders of this edition. The reader should consult National Instruments if errors are suspected. In no event shall National Instruments be liable for any damages arising out of or related to this document or the information contained in it.

EXCEPT AS SPECIFIED HEREIN, NATIONAL INSTRUMENTS MAKES NO WARRANTIES, EXPRESS OR IMPLIED, AND SPECIFICALLY DISCLAIMS ANY WARRANTY OF MERCHANTABILITY OR FITNESS FOR A PARTICULAR PURPOSE. CUSTOMER'S RIGHT TO RECOVER DAMAGES CAUSED BY FAULT OR NEGLIGENCE ON THE PART OF NATIONAL INSTRUMENTS SHALL BE LIMITED TO THE AMOUNT THEREFORE PAID BY THE CUSTOMER. NATIONAL INSTRUMENTS WILL NOT BE LIABLE FOR DAMAGES RESULTING FROM LOSS OF DATA, PROFITS, USE OF PRODUCTS, OR INCIDENTAL OR CONSEQUENTIAL DAMAGES, EVEN IF ADVISED OF THE POSSIBILITY THEREOF. This limitation of the liability of National Instruments will apply regardless of the form of action, whether in contract or tort, including negligence. Any action against National Instruments must be brought within one year after the cause of action accrues. National Instruments shall not be liable for any delay in performance due to causes beyond its reasonable control. The warranty provided herein does not cover damages, defects, malfunctions, or service failures caused by owner's failure to follow the National Instruments installation, operation, or maintenance instructions; owner's modification of the product; owner's abuse, misuse, or negligent acts; and power failure or surges, fire, flood, accident, actions of third parties, or other events outside reasonable control.

Copyright

Under the copyright laws, this publication may not be reproduced or transmitted in any form, electronic or mechanical, including photocopying, recording, storing in an information retrieval system, or translating, in whole or in part, without the prior written consent of National Instruments Corporation.

Trademarks

LabVIEW®, NI-488®, and NI-488.2™ are trademarks of National Instruments Corporation.

Product and company names listed are trademarks or trade names of their respective companies.

WARNING REGARDING MEDICAL AND CLINICAL USE OF NATIONAL INSTRUMENTS PRODUCTS

National Instruments products are not designed with components and testing intended to ensure a level of reliability suitable for use in treatment and diagnosis of humans. Applications of National Instruments products involving medical or clinical treatment can create a potential for accidental injury caused by product failure, or by errors on the part of the user or application designer. Any use or application of National Instruments products for or involving medical or clinical treatment must be performed by properly trained and qualified medical personnel, and all traditional medical safeguards, equipment, and procedures that are appropriate in the particular situation to prevent serious injury or death should always continue to be used when National Instruments products are being used. National Instruments products are NOT intended to be a substitute for any form of established process, procedure, or equipment used to monitor or safeguard human health and safety in medical or clinical treatment.

FCC/DOC Radio Frequency Interference Class A Compliance

This equipment generates and uses radio frequency energy and, if not installed and used in strict accordance with the instructions in this manual, may cause interference to radio and television reception. Classification requirements are the same for the Federal Communications Commission (FCC) and the Canadian Department of Communications (DOC). This equipment has been tested and found to comply with the following two regulatory agencies:

Federal Communications Commission

This equipment has been tested and found to comply with the limits for a Class A digital device, pursuant to part 15 of the FCC Rules. These limits are designed to provide reasonable protection against harmful interference when the equipment is operated in a commercial environment. This equipment generates, uses, and can radiate radio frequency energy and, if not installed and used in accordance with the instruction manual, may cause harmful interference to radio communications. Operation of this equipment in a residential area is likely to cause harmful interference in which case the user will be required to correct the interference at his own expense.

Notices to User: *Changes or modifications not expressly approved by National Instruments could void the user's authority to operate the equipment under the FCC Rules.*

This device complies with the FCC rules only if used with shielded interface cables of suitable quality and construction. National Instruments used such cables to test this device and provides them for sale to the user. The use of inferior or nonshielded interface cables could void the user's authority to operate the equipment under the FCC rules.

If necessary, consult National Instruments or an experienced radio/television technician for additional suggestions. The following booklet prepared by the FCC may also be helpful: *Interference to Home Electronic Entertainment Equipment Handbook*. This booklet is available from the U.S. Government Printing Office, Washington, DC 20402.

Canadian Department of Communications

This Class A digital apparatus meets all requirements of the Canadian Interference-Causing Equipment Regulations.

Cet appareil numérique de la classe A respecte toutes les exigences du Règlement sur le matériel brouilleur du Canada.

About This Manual

How to Use This Manual Set	ix
Organization of This Manual	x
Conventions Used in This Manual	xi
Related Documentation	xi
Customer Communication	xii

Chapter 1

Introduction

What You Need to Get Started	1-1
Optional Equipment	1-1
Hardware Description	1-2
Software Description	1-2
Optional Programming Tools	1-3

Chapter 2

Installation and Configuration

Connect the Hardware	2-1
Step 1. Shut Down Your System	2-1
Step 2. Connect the Cables	2-2
Step 3. Switch On Your GPIB-SCSI-A	2-3
Step 4. Power On Your System	2-3
Install the Software	2-3
NI-488.2 Software Components	2-3
Step 1. Install the NI-488.2 Files and Folders	2-4
Step 2. Examine or Change the Software Settings	2-6
Step 3. Restart Your Macintosh	2-7
Verify the Software Installation	2-7

Chapter 3

Hardware Configuration

Configuring the Switch Settings.....	3-1
Configuration Switch Settings for SW1	3-2
Configuration Switch Settings for SW2	3-4
Using SCSI Terminating Resistors	3-6

Appendix A

Hardware Specifications

Appendix B

Troubleshooting

Troubleshooting Hardware Problems	B-1
Troubleshooting Software Problems	B-2
Common Questions	B-2

Appendix C

Customer Communication

Glossary

Figures

Figure 2-1.	Installer Window	2-5
Figure 2-2.	File and Folder Organization after Installation	2-5
Figure 2-3.	NI-488 Config Control Panel	2-6
Figure 3-1.	GPIO-SCSI-A Rear Panel	3-1
Figure 3-2.	SW1 Default Mode Switch Settings.....	3-2
Figure 3-3.	SW2 Default Mode Switch Settings.....	3-5
Figure 3-4.	Terminating Resistors for GPIO-SCSI-A at End of SCSI Bus	3-6
Figure 3-5.	Terminating Resistors for GPIO-SCSI-A Not at End of SCSI Bus	3-7

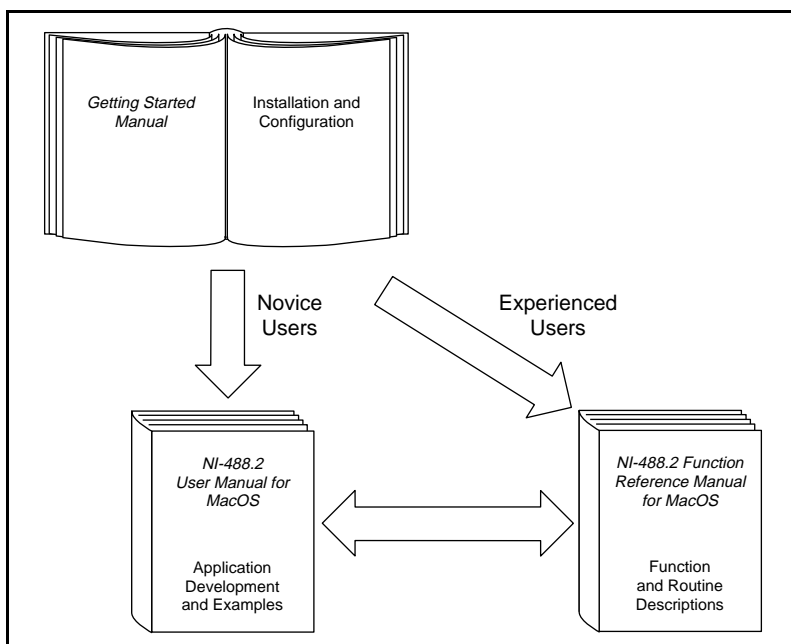
Tables

Table 3-1.	Configuration Parameters for Switches 1 through 3.....	3-2
Table 3-2.	Configuration Parameters for Switches 4 through 8.....	3-3
Table 3-3.	Factory Default Configurations for SW2.....	3-5
Table A-1.	Electrical Characteristics	A-1
Table A-2.	Environmental Characteristics	A-1
Table A-3.	Physical Characteristics	A-2

This manual contains instructions for installing and configuring the National Instruments GPIB-SCSI-A SCSI-to-GPIB Controller and NI-488.2 software for MacOS. This manual is meant to be used with the *NI-488.2 User Manual for MacOS* and the *NI-488.2 Function Reference Manual for MacOS*.

This manual assumes that you are already familiar with the Macintosh operating system.

How to Use This Manual Set



Use this getting started manual to install and configure your GPIB hardware and NI-488.2 software.

Use the *NI-488.2 User Manual for MacOS* to learn the basics of GPIB and how to develop an application program. The user manual also contains debugging information and detailed examples.

Use the *NI-488.2 Function Reference Manual for MacOS* for specific NI-488 function and NI-488.2 routine information, such as format, parameters, and possible errors.

Organization of This Manual

This manual is organized as follows:

- Chapter 1, *Introduction*, lists what you need to get started and optional equipment you can order, and briefly describes the GPIB hardware and the NI-488.2 software.
- Chapter 2, *Installation and Configuration*, contains instructions for connecting your GPIB-SCSI-A, installing the NI-488.2 software, and testing the software installation.
- Chapter 3, *Hardware Configuration*, describes how to change the operating characteristics of the GPIB-SCSI-A and how to use SCSI terminating resistors.
- Appendix A, *Hardware Specifications*, specifies the electrical, environmental, and physical characteristics of the GPIB-SCSI-A.
- Appendix B, *Troubleshooting*, suggests some areas to check if you have problems installing the GPIB-SCSI-A or the NI-488.2 software after going through the procedures described in Chapter 2, *Installation and Configuration*, and Chapter 3, *Hardware Configuration*.
- Appendix C, *Customer Communication*, contains forms you can use to request help from National Instruments or to comment on our products and manuals.
- The *Glossary* contains an alphabetical list and description of terms used in this manual including abbreviations, acronyms, metric prefixes, mnemonics, and symbols.

Conventions Used in This Manual

The following conventions are used in this manual.



This icon to the left of bold italicized text denotes a note, which alerts you to important information.



This icon to the left of bold italicized text denotes a caution, which advises you of precautions to take to avoid injury, data loss, or a system crash.



This icon to the left of bold italicized text denotes a warning, which advises you of precautions to take to avoid being electrically shocked.

bold

Bold text denotes the names of menus, menu items, parameters, dialog box, dialog box buttons or options, icons, windows, or LEDs.

bold italic

Bold italic text denotes a note, caution, or warning.

italic

Italic text denotes emphasis, a cross reference, or an introduction to a key concept.

`monospace`

Text in this font denotes text or characters that should literally enter from the keyboard, sections of code, programming examples, and syntax examples. This font is also used for the proper names of disk drives, paths, directories, programs, subprograms, subroutines, device names, functions, operations, variables, filenames and extensions, and for statements and comments taken from programs.

`bold monospace`

Bold text in this font denotes the messages and responses that the computer automatically prints to the screen. This font also emphasizes lines of code that are different from the other examples.

IEEE 488 and
IEEE 488.2

IEEE 488 and IEEE 488.2 refer to the ANSI/IEEE Standard 488.1-1987 and the ANSI/IEEE Standard 488.2-1987, respectively, which define the GPIB.

Macintosh

Macintosh refers any computer using MacOS.

The *Glossary* lists abbreviations, acronyms, metric prefixes, mnemonics, symbols, and terms.

Related Documentation

The following documents contain information that you may find helpful as you read this manual:

- ANSI X3.131-1986, *Small Computer Systems Interface (SCSI)*

- ANSI/IEEE Standard 488.1-1987, *IEEE Standard Digital Interface for Programmable Instrumentation*
- ANSI/IEEE Standard 488.2-1987, *IEEE Standard Codes, Formats, Protocols, and Common Commands*

Customer Communication

National Instruments wants to receive your comments on our products and manuals. We are interested in the applications you develop with our products, and we want to help if you have problems with them. To make it easy for you to contact us, this manual contains comment and configuration forms for you to complete. These forms are in Appendix C, *Customer Communication*, at the end of this manual.

Introduction

Chapter 1

This chapter lists what you need to get started and optional equipment you can order, and briefly describes the GPIB hardware and the NI-488.2 software.

What You Need to Get Started

- ☐ One of the following boxes:
 - GPIB-SCSI-A, 100 to 120 VAC
 - GPIB-SCSI-A, 220 to 240 VAC
- ☐ One of the following power cords:
 - U.S.A. standard power cord
 - Switzerland power cord
 - Australian power cord
 - Universal European power cord
 - North American power cord
 - U.K. power cord
- ☐ Standard 50-pin SCSI-1 terminator
- ☐ 3.5 in. *NI-488.2 Software for MacOS Distribution Disk*

Optional Equipment

You can order the following optional equipment from National Instruments.

- Double-Shielded SCSI Cables:
 - Type SCSI-M GPIB-SCSI-A (50-pin Champ) to Macintosh Powerbook port — 0.5 m
 - Type SCSI-A GPIB-SCSI-A (50-pin Champ) to Macintosh (25-pin D-Sub) — 1 m
 - Type SCSI-J GPIB-SCSI-A (50-pin Champ) to SCSI-1 (50-pin Champ) — 1 m

- Type SCSI-G GPIB-SCSI-A (50-pin Champ) to SCSI-2 (50-pin High Density) — 1m
- Shielded GPIB Cables*:
 - Type X1 single-shielded cables — 1 m, 2 m, or 4 m
 - Type X2 double-shielded cables — 1 m, 2 m, or 4 m
- Rack-Mount Kits:
 - Single rack-mount kit (1 unit)
 - Dual rack-mount kit (2 units)
- To meet FCC emission limits for this Class A device, you must use a shielded (Type X1 or X2) GPIB cable. Operating this equipment with a non-shielded GPIB cable may cause interference to radio and television reception in commercial areas.

Hardware Description

The GPIB-SCSI-A is a high-performance interface product that transparently handles data transfers between the SCSI and the GPIB. It is an 8-bit microcomputer that operates as a full-function IEEE 488/SCSI Controller. The GPIB-SCSI-A can transform any computer with a SCSI port into a GPIB Talker/Listener/Controller or make any device on the SCSI bus look like a GPIB device.

The GPIB-SCSI-A has all the software and logic required to implement the physical and electrical characteristics of the ANSI/IEEE Standard 488.1-1987 and the ANSI Standard X3T9.2. Also, all GPIB protocols have been updated to comply with ANSI/IEEE Standard 488.2-1987. It is able to interpret and execute commands that you send to it over the GPIB or SCSI ports and perform all necessary SCSI-to-GPIB protocol conversions.

Software Description

The NI-488.2 software for MacOS is a comprehensive set of programs and drivers that simplifies the job of programming the GPIB-SCSI-A to function as a GPIB Controller with complete communication and bus management capabilities. The NI-488.2 software also comes with an interactive debugger; FutureBASIC, Macintosh Programmer's Workshop (MPW) C, THINK C, and Metrowerks CodeWarrior C language interfaces; and a shared library for C programmers developing applications for PowerPC.

Optional Programming Tools

Your kit includes the NI-488.2 software for MacOS. In addition, you can order the LabVIEW software from National Instruments. LabVIEW includes instrument driver libraries that make it easier to communicate with your GPIB instruments.

LabVIEW is a complete programming environment that departs from the sequential nature of traditional programming languages and features a graphical programming environment. It includes all the tools needed for instrument control, data acquisition, analysis, and presentation. When you order LabVIEW, you also get hundreds of complete instrument drivers, which are modular, source-code programs that handle the communication with your instrument so that you do not have to learn the programming details.

For more information about LabVIEW, contact National Instruments.

Installation and Configuration

Chapter

2

This chapter contains instructions for connecting your GPIB-SCSI-A, installing the NI-488.2 software, and testing the software installation.

If you need more detailed information, refer to Chapter 3, *Hardware Configuration*.

Connect the Hardware

The following are general instructions for connecting the GPIB-SCSI-A to your Macintosh. Refer to the manual that came with your computer for specific instructions and warnings.

You can use two methods to connect the GPIB-SCSI-A to your Macintosh. One method is connecting the GPIB-SCSI-A directly to the Macintosh computer by using a cable with the proper connectors at each end. The other method is daisy-chaining. *Daisy-chaining* is a means of connecting a number of SCSI devices to a host so that a single port on the host can serve a variable number of devices. If you are installing the GPIB-SCSI-A in the middle of a daisy-chain, you need to remove the terminating resistor pack. Refer to the *Using SCSI Terminating Resistors* section in Chapter 3, *Hardware Configuration*, for additional instructions for daisy-chaining SCSI devices.

There are four basic steps to connecting the GPIB-SCSI-A.

1. Shut down your system.
2. Connect the cables.
3. Switch on your GPIB-SCSI-A.
4. Power on your system.

The GPIB-SCSI-A is shipped from the factory with either a 100 to 120 VAC or 220 to 240 VAC power supply. Before you connect it, verify that the voltage specified on the rear panel label matches the voltage that is supplied in your area.



Caution: *Operating the GPIB-SCSI-A at any voltage other than the one specified on the rear panel label could damage the unit. Replacement fuses must be the proper type and rating. See Appendix A, Hardware Specifications, for fuse information.*

Step 1. Shut Down Your System

Complete the following steps to shut down your system.

1. Select the **Shut Down** command from the **Special** menu.
2. Turn off your computer.
3. Turn off all of the external SCSI devices, if any, attached to your computer.
4. Unplug the power cord from the power outlet.

Step 2. Connect the Cables



Caution: *Never connect or disconnect SCSI cables when any device (computer, CD-ROM drive, GPIB-SCSI-A, and so on) is powered-on. Doing so can cause fuses to blow inside the GPIB-SCSI-A and inside other SCSI devices that supply termination power (TERMPWR) to the SCSI bus.*

Complete the following steps to connect the cables.

1. Connect the SCSI cable to the GPIB-SCSI-A and fasten it securely. Connect the other end to your SCSI system. Be sure to use only shielded SCSI cables. Total cable length in your SCSI system should be less than 6 m, and terminating resistors should be installed on both ends as described in Chapter 3, *Hardware Configuration*.
2. Connect the GPIB cable to the GPIB-SCSI-A and tighten the thumb screws on the connector. Connect the other end to your GPIB system. Be sure to use only shielded GPIB cables. Total cable length in your GPIB system should be less than 20 m, with a maximum separation of 4 m between any two devices. You should have no more than 15 devices in a GPIB system, and at least two-thirds of those devices must be powered on.
3. Plug the power cord into an AC outlet of the correct voltage.

Step 3. Switch On Your GPIB-SCSI-A

Switch on your GPIB-SCSI-A by using the rocker switch on the rear panel. The **POWER** LED indicator should come on immediately and the **READY** LED indicator on the front panel should come on after the GPIB-SCSI-A has passed its power-on self-test, indicating that the unit is ready for operation.

If the **READY** LED does not come on within 10 seconds after the unit is powered on, recheck all connections and switch settings (refer to Chapter 3, *Hardware Configuration*) and try the power-on sequence again. If the **READY** LED still fails to come on, fill out the forms in Appendix C, *Customer Communication*, and contact National Instruments.

Step 4. Power On Your System

Plug the power cords of the Macintosh computer and any other SCSI equipment into a power outlet and power on all devices.

Install the Software

The NI-488.2 software is distributed in compressed form on one diskette. Installing all of the software requires about 1.5 MB of space on your hard disk and takes about five minutes.

NI-488.2 Software Components

The NI-488.2 software includes the following components:

- **NI-488.2 Installer** is the software installation program.
- **NI-488 INIT** is an INIT that loads the device drivers for installed National Instruments GPIB interfaces when you power on or restart your Macintosh.
- **NI-488 Config** is a control panel configuration utility that you can use to examine or change the software settings.
- **NI-DMA/DSP** is a system extension that provides DMA functionality through an RTSI connection to an NB-DMA2800 or NB-DMA-8.

- The `C LI` and `BASIC LI` folders contain language interfaces for Macintosh Programmer's Workshop (MPW) C, THINK C, Metrowerks CodeWarrior C, and FutureBASIC.
- `MacGPIB.shlb` is a shared library for C programmers developing applications for the PowerPC platform.
- `IBIC 488.2` is an interactive GPIB control utility.
- `NI-488.2 Test` is a software diagnostic utility.
- `IBDIAG NUBUS`, `IBDIAG PCI`, and `IBDIAG PCMCIA` are hardware diagnostic utilities.
- The `Ethernet` folder contains utilities that are applicable only if you have a National Instruments GPIB-ENET.
- The `Read Me` file contains the latest updates and corrections to the manual when appropriate.

Install the NI-488.2 software by completing the following steps.

Step 1. Install the NI-488.2 Files and Folders



Caution: *Virus detection software might prevent the installer from copying important files to the `System Folder`. You must disable or bypass any virus prevention software before attempting the installation procedure.*

To install the NI-488.2 files and folders, complete the following steps.

1. Insert the NI-488.2 software distribution disk and double-click on the `NI-488.2 Installer` icon.

- Click on the icon on the left side of the **Installer** window, shown in Figure 2-1, and drag it to any available disk on the right side of the window.

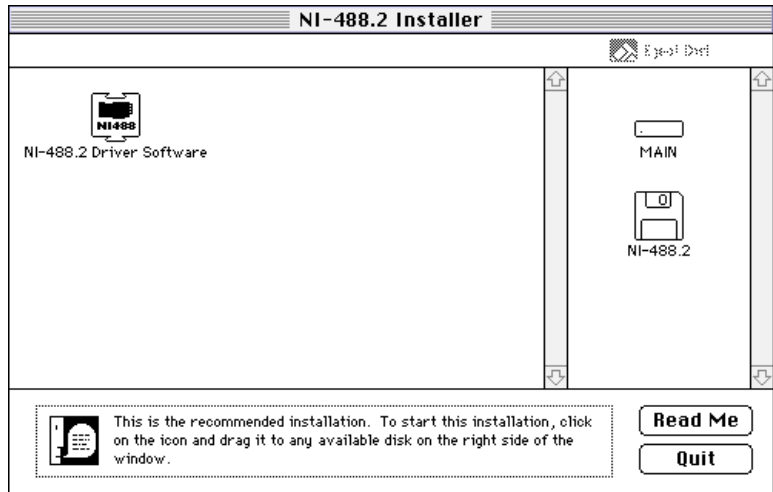


Figure 2-1. Installer Window

After installation of all of the software, the NI-488.2 folder should contain the items shown in Figure 2-2. The installer places the NI-488 Config file in the Control Panels folder and the NI-488 INIT and NI-DMA/DSP files in the Extensions folder.

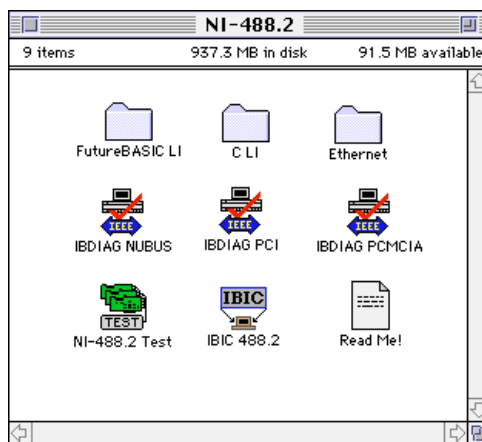


Figure 2-2. File and Folder Organization after Installation

Step 2. Examine or Change the Software Settings

The default settings for the software work for most applications and devices. However, you might want to change a device name or primary address. Also, if more than one GPIB interface or external box is installed, you might want to associate a device with a particular interface.

NI-488 Config is a configuration utility that you can use to examine and change the software settings for your board. You can activate the configuration utility by selecting **Control Panels** from the **Apple Icon** menu and selecting **NI-488 Config**.

After the configuration utility is activated, click on the **Interface Type** menu and select **SCSI box products** as shown in Figure 2-3. Checking the **Auto Configure** box causes a scan over the SCSI bus to locate any GPIB-SCSI-A. An **x** appears in each SCSI ID box that corresponds to a GPIB-SCSI-A. If no boxes are checked, you might need to change a hardware setting. Refer to Chapter 3, *Hardware Configuration*, for instructions on changing hardware settings.

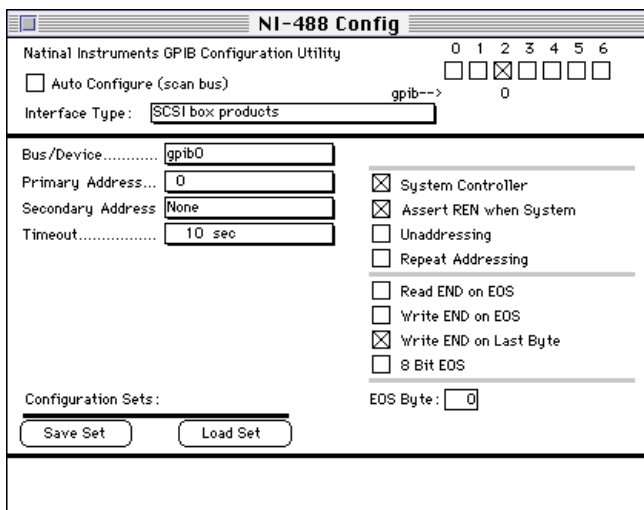


Figure 2-3. NI-488 Config Control Panel

Step 3. Restart Your Macintosh

The NI-488.2 driver is installed every time you start or restart your Macintosh. The NI-488.2 software displays the National Instruments icon momentarily in the lower left corner of the screen to indicate that the driver is being installed. If the National Instruments icon does not appear on your screen, repeat the installation procedure before continuing to the next section, *Verify the Software Installation*.

Verify the Software Installation

This step verifies that the driver is installed and functioning with the GPIB-SCSI-A hardware. If any one of the software installation steps fails, you might have to change a hardware and software setting. If this is the case, refer to Chapter 3, *Hardware Configuration*.

Follow these steps to run the software verification test.

1. Disconnect all GPIB cables from the GPIB-SCSI-A box.
2. Double-click on the NI-488.2 Test icon in the NI-488.2 folder.
If no error messages are displayed, the installation is complete.
3. If error messages are displayed, select **Restart** from the **Special** menu, and double-click on the NI-488.2 Test icon.
 - If the test fails again, reinstall the NI-488.2 software from the distribution disk, restart your Macintosh, and double-click on the NI-488.2 Test icon.
 - If the verification still fails, review the material in Appendix B, *Troubleshooting*, which describes how to troubleshoot problems and lists some common questions. If you need to change a software setting, refer to Chapter 6, *GPIB Configuration Utility*, in the *NI-488.2 User Manual for MacOS*.
 - If the software settings are correct and the verification still fails, carefully note all error information on the forms in Appendix C, *Customer Communication*, and contact National Instruments.

When the verification test is successful, you are ready to write your own application program. Refer to the *NI-488.2 Function Reference Manual for MacOS* for sample programs.

Hardware Configuration

This chapter describes how to change the operating characteristics of the GPIB-SCSI-A and how to use SCSI terminating resistors.

The hardware configurations of the SCSI ID (Target ID) and the GPIB primary address must match the software configuration in the system configuration files and the NI-488.2 software for MacOS.

Configuring the Switch Settings

The GPIB-SCSI-A is shipped from the factory configured to operate in S (SCSI) mode. The SCSI ID to which the GPIB-SCSI-A responds is set at 5, and the primary GPIB address is set at 0. Additionally, the GPIB-SCSI-A is shipped from the factory with a SCSI terminator installed. To determine if you need to remove it, refer to the *Using SCSI Terminating Resistors* section in this chapter.



Note:

The only switch settings available for configuration with this kit are the SCSI ID and the GPIB address, which are controlled by SW1. You do not need to change the switch settings for SW2, which controls the mode of operation.

Figure 3-1 shows the location of the switches on the back panel of the GPIB-SCSI-A.

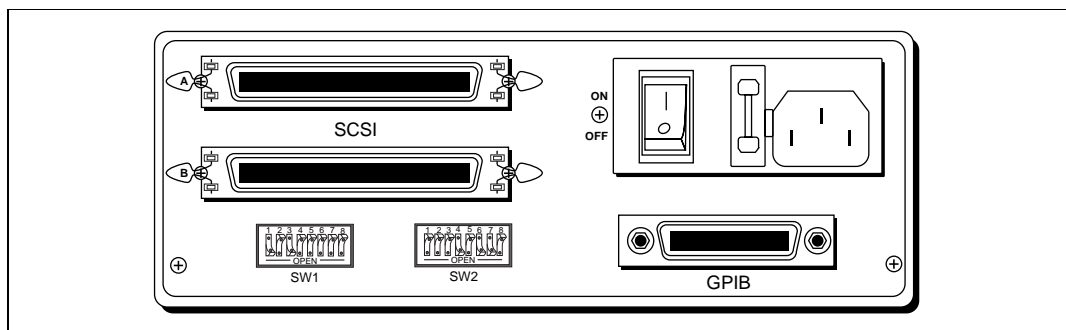


Figure 3-1. GPIB-SCSI-A Rear Panel

Configuration Switch Settings for SW1

The DIP switch at location SW1 on the rear panel (see Figure 3-1) is used to configure the power-on primary GPIB address and SCSI ID of the GPIB-SCSI-A. The DIP switch has eight configuration switches.

Figure 3-2 shows the factory default setting of the GPIB-SCSI-A for switch SW1. Switches 1 through 3 are ON, OFF, and ON, respectively, selecting the SCSI ID of 5. Switches 4 through 8 are OFF to indicate that the GPIB primary address of the GPIB-SCSI-A is 0.

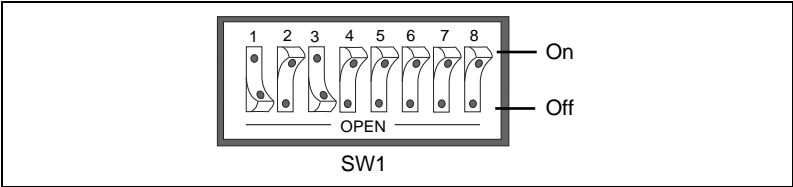


Figure 3-2. SW1 Default Mode Switch Settings

Tables 3-1 and 3-2 show the possible configurations of the eight switches and what each configuration indicates. Bold italic rows indicate default settings.

Table 3-1. Configuration Parameters for Switches 1 through 3

Switches			Indication
1	2	3	
OFF	OFF	OFF	SCSI ID of 0
OFF	OFF	ON	SCSI ID of 1
OFF	ON	OFF	SCSI ID of 2
OFF	ON	ON	SCSI ID of 3
ON	OFF	OFF	SCSI ID of 4
<i>ON</i>	<i>OFF</i>	<i>ON</i>	<i>SCSI ID of 5</i>
ON	ON	OFF	SCSI ID of 6
ON	ON	ON	SCSI ID of 7

Table 3-2. Configuration Parameters for Switches 4 through 8

Switches					Indication
4	5	6	7	8	
OFF	OFF	OFF	OFF	OFF	<i>GPIB Primary Address 0</i>
OFF	OFF	OFF	OFF	ON	GPIB Primary Address 1
OFF	OFF	OFF	ON	OFF	GPIB Primary Address 2
OFF	OFF	OFF	ON	ON	GPIB Primary Address 3
OFF	OFF	ON	OFF	OFF	GPIB Primary Address 4
OFF	OFF	ON	OFF	ON	GPIB Primary Address 5
OFF	OFF	ON	ON	OFF	GPIB Primary Address 6
OFF	OFF	ON	ON	ON	GPIB Primary Address 7
OFF	ON	OFF	OFF	OFF	GPIB Primary Address 8
OFF	ON	OFF	OFF	ON	GPIB Primary Address 9
OFF	ON	OFF	ON	OFF	GPIB Primary Address 10
OFF	ON	OFF	ON	ON	GPIB Primary Address 11
OFF	ON	ON	OFF	OFF	GPIB Primary Address 12
OFF	ON	ON	OFF	ON	GPIB Primary Address 13
OFF	ON	ON	ON	OFF	GPIB Primary Address 14
OFF	ON	ON	ON	ON	GPIB Primary Address 15
ON	OFF	OFF	OFF	OFF	GPIB Primary Address 16
ON	OFF	OFF	OFF	ON	GPIB Primary Address 17
ON	OFF	OFF	ON	OFF	GPIB Primary Address 18
ON	OFF	OFF	ON	ON	GPIB Primary Address 19

Table 3-2. Configuration Parameters for Switches 4 through 8 (Continued)

Switches					Indication
4	5	6	7	8	
ON	OFF	ON	OFF	OFF	GPIO Primary Address 20
ON	OFF	ON	OFF	ON	GPIO Primary Address 21
ON	OFF	ON	ON	OFF	GPIO Primary Address 22
ON	OFF	ON	ON	ON	GPIO Primary Address 23
ON	ON	OFF	OFF	OFF	GPIO Primary Address 24
ON	ON	OFF	OFF	ON	GPIO Primary Address 25
ON	ON	OFF	ON	OFF	GPIO Primary Address 26
ON	ON	OFF	ON	ON	GPIO Primary Address 27
ON	ON	ON	OFF	OFF	GPIO Primary Address 28
ON	ON	ON	OFF	ON	GPIO Primary Address 29
ON	ON	ON	ON	OFF	GPIO Primary Address 30
ON	ON	ON	ON	ON	GPIO Primary Address 0

Configuration Switch Settings for SW2

The DIP switch at location SW2 on the rear panel (see Figure 3-1) is used to configure the mode of operation for the GPIB-SCSI-A. The GPIB-SCSI-A is configured at the factory to operate in SCSI (S) mode. In S mode, the SCSI port is the controlling interface. You do *not* need to change these switch settings for use with the Macintosh computer. The DIP switch has eight configuration switches. Figure 3-3 shows the factory default setting.

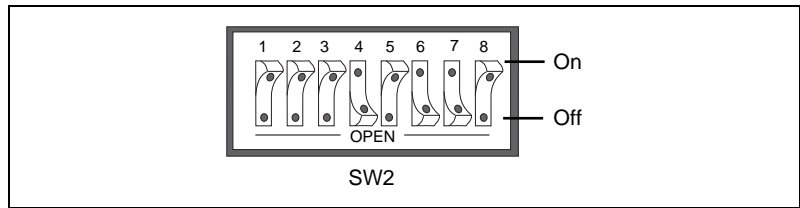


Figure 3-3. SW2 Default Mode Switch Settings

Make sure that these switches are set as shown in Figure 3-3. If they are not, set the switches as indicated.

Table 3-3 and the subsequent paragraph describe the factory default configurations of the eight switches.

Table 3-3. Factory Default Configurations for SW2

Switch	Position	Indication
8	OFF	Operating in S (SCSI) mode.
7	ON	GPIB-SCSI-A neither notices nor reports SCSI parity errors.
6	ON	GPIB-SCSI-A buffers data during data transfer commands.
5	OFF	GPIB-SCSI-A completes all data requests to the count specified.
4	ON	Double buffering is enabled.
1-3	OFF	Reserved and should remain OFF.

Switch 8 is OFF, indicating that the GPIB-SCSI-A is operating in S mode. Switch 7 is ON, indicating that the GPIB-SCSI-A neither notices nor reports SCSI parity errors. Switch 6 is ON, indicating that the GPIB-SCSI-A buffers data during data transfer commands. Switch 5 is OFF, indicating that the GPIB-SCSI-A completes all data requests to the exact count specified. Switch 4 is ON, indicating that double buffering is used. Switches 1 through 3 are OFF because they are reserved.

Using SCSI Terminating Resistors

Because of its high-speed capabilities, the SCSI bus is sensitive to the electrical characteristics of the SCSI cabling. When a signal is sent through the SCSI bus, it bounces back and creates echoes along the cabling. Any devices in the middle of the daisy-chained SCSI bus receive these signal echoes. Placement of terminating resistor packs can prevent echoes and ensure proper termination of a signal. Proper termination is essential to the devices connected on a SCSI bus. Read the documentation for each device to find out what kind of termination it provides.

If your GPIB-SCSI-A is located at the end of a SCSI bus, you can prevent echoes by leaving the terminating resistor pack installed on one of the ports on the rear panel of the GPIB-SCSI-A. Also ensure that the device at the other end of the SCSI bus (for example, the SCSI host in Figure 3-4) has a terminating resistor installed. But remove the terminating resistor packs on all devices except for the two at each end because SCSI signals are not reliably passed along the SCSI bus after they reach a device with a terminator.



Caution: *Never connect more than two sets of terminating resistors on a SCSI bus, because more than two sets may overload the signals and generate errors.*

Figure 3-4 shows the GPIB-SCSI-A located at the end of a SCSI system.

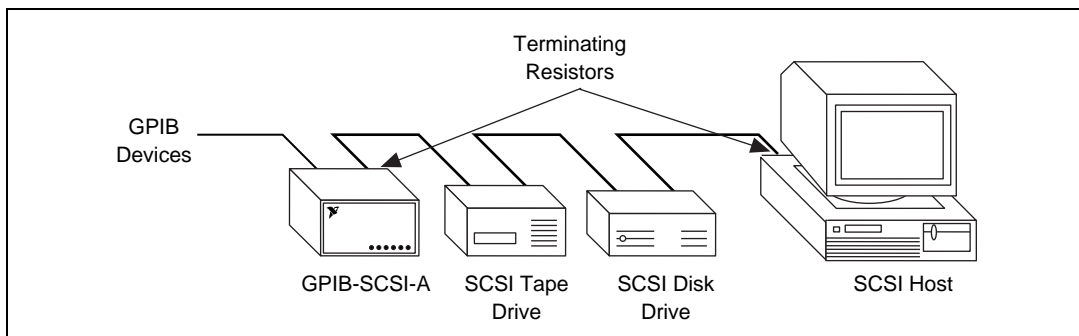


Figure 3-4. Terminating Resistors for GPIB-SCSI-A at End of SCSI Bus

If your GPIB-SCSI-A is not located at the end of the SCSI bus, remove the terminating resistor pack from the rear panel of the GPIB-SCSI-A. Ensure that all devices in the middle of the bus (for example, the SCSI

disk drive and the GPIB-SCSI-A in Figure 3-5) do not have terminating resistors installed. The devices at each end of the SCSI bus should have terminating resistors installed.

Figure 3-5 shows the GPIB-SCSI-A at a location other than the end of a SCSI system.

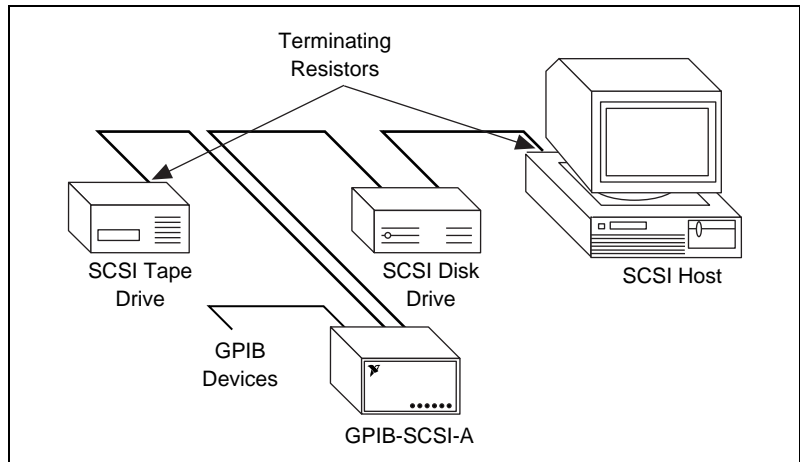


Figure 3-5. Terminating Resistors for GPIB-SCSI-A Not at End of SCSI Bus

Hardware Specifications

Appendix

A

This appendix specifies the electrical, environmental, and physical characteristics of the GPIB-SCSI-A.

Table A-1. Electrical Characteristics

Characteristic	Specification
Power Supply Unit	100 to 120 VAC $\pm 10\%$, 50 to 60 Hz or 220 to 240 VAC $\pm 10\%$, 50 to 60 Hz
Current	100 to 120 VAC 90 mA or 220 to 240 VAC 90 mA
Fuse Rating and Type	100 to 120 VAC 200 mA, UL/CSA approved or 220 to 20 VAC 125 mA, IEC approved

Table A-2. Environmental Characteristics

Characteristic	Specification
Operating Temperature	0° to 40° C
Storage Temperature	–20° to 70° C
Relative Humidity	10% to 90%, noncondensing
EMI	FCC Class A Verified

Table A-3. Physical Characteristics

Characteristic	Specification
Overall Case Sizes (Dimensions)	109.2 mm by 74.5 mm by 250.9 mm (7.489 in. by 2.934 in. by 9.88 in.)
Case Material	All metal enclosure
Rack Mounting	Single or dual kits available
Weight	1.81 kg (4 lb)

Troubleshooting

Appendix B

This appendix suggests some areas to check if you have problems installing the GPIB-SCSI-A or the NI-488.2 software after going through the procedures described in Chapter 2, *Installation and Configuration*, and Chapter 3, *Hardware Configuration*.

If you still have problems after completing the steps in this appendix, complete the appropriate forms in Appendix C, *Customer Communication*, and then contact National Instruments for technical support.

Troubleshooting Hardware Problems



Warning: *The GPIB-SCSI-A contains circuitry that operates with hazardous voltages. Refer service requirements to qualified personnel.*

- The SCSI cable must be securely connected to the GPIB-SCSI-A.
- If the GPIB-SCSI-A is the last device on the SCSI bus, make sure that you have placed the terminating resistor pack on one of the SCSI ports on the rear panel of the GPIB-SCSI-A to terminate the SCSI bus. (See *Using SCSI Terminating Resistors* in Chapter 3, *Hardware Configuration*, for more information.)
- Check the DIP switch settings on the GPIB-SCSI-A. Make sure that they are set to the correct SCSI ID (Target ID), the correct GPIB primary address and other feature settings, such as mode of operation, data padding, or disconnection/reconnection. (See *Configuring the Switch Settings* in Chapter 3, *Hardware Configuration*, for more information.)
- If the **POWER** LED is not lit, check the fuse.



Caution: *Replacement fuses must be of the proper type and rating. See Appendix A, *Hardware Specifications*, for fuse information.*

- Make sure that the GPIB-SCSI-A is powered on.

Troubleshooting Software Problems

The NI-488 Config control panel (GPIB configuration utility) should show the following software configuration:

- The **Interface Type** menu selection should be set to **SCSI box products**.
- An **X** should appear in the ID checkbox that corresponds to the SCSI ID set by SW1 on the GPIB-SCSI-A.

Common Questions

What do I do if my box does not show up in the NI-488 Config utility?

In NI-488 Config, an **X** should appear in the ID checkbox that corresponds to the SCSI ID of your GPIB-SCSI-A. If an **X** does not appear in that box, make sure that all SCSI devices daisy-chained to the SCSI cable are connected properly.

What do I do if the hardware or software verification test fails with an error?

Refer to the troubleshooting sections of this chapter for information about what might cause these tests to fail.

What do I do if I have installed the NI-488.2 software and now my Macintosh crashes upon startup?

Try changing the name of the NI-488 INIT to ZNI-488 INIT. Because INITs load in alphabetical order, the ZNI-488 INIT will load last, preventing possible corruption from INITs that load after it. If changing the name of the NI-488 INIT does not solve the problem, another INIT file may have a conflict with the NI-488 INIT. Try removing some of your other INIT files. You can store them in a temporary folder, in case you need to reload them later. If you are using System 7.5 or later, you can use the Extensions Manager control panel to disable certain extensions and control panels.

My system has been crashing since I switched to a Quadra computer. What should I do?

This problem was associated with some versions of the `NB_Handler INIT`. Upgrade to the `NI-488 INIT` to resolve this situation.

When should I use `IBIC 488.2`?

You can use `IBIC 488.2` to test and verify instrument communication, troubleshoot problems, and develop your application program. For more information about `IBIC 488.2`, refer to Chapter 4, *Interface Bus Interactive Control Utility*, in the *NI-488.2 User Manual for MacOS*.

How do I use an NI-488.2 language interface?

For information about using NI-488.2 language interfaces, refer to the *NI-488.2 User Manual for MacOS*.

What information should I have before I call National Instruments?

When you call National Instruments, you should have the results of the hardware and software verification tests. In addition, make sure you have filled out the configuration form in Appendix C, *Customer Communication*.

Customer Communication

Appendix

C

For your convenience, this appendix contains forms to help you gather the information necessary to help us solve your technical problems and a form you can use to comment on the product documentation. When you contact us, we need the information on the Technical Support Form and the configuration form, if your manual contains one, about your system configuration to answer your questions as quickly as possible.

National Instruments has technical assistance through electronic, fax, and telephone systems to quickly provide the information you need. Our electronic services include a bulletin board service, an FTP site, a fax-on-demand system, and e-mail support. If you have a hardware or software problem, first try the electronic support systems. If the information available on these systems does not answer your questions, we offer fax and telephone support through our technical support centers, which are staffed by applications engineers.

Electronic Services



Bulletin Board Support

National Instruments has BBS and FTP sites dedicated for 24-hour support with a collection of files and documents to answer most common customer questions. From these sites, you can also download the latest instrument drivers, updates, and example programs. For recorded instructions on how to use the bulletin board and FTP services and for BBS automated information, call (512) 795-6990. You can access these services at:

United States: (512) 794-5422

Up to 14,400 baud, 8 data bits, 1 stop bit, no parity

United Kingdom: 01635 551422

Up to 9,600 baud, 8 data bits, 1 stop bit, no parity

France: 01 48 65 15 59

Up to 9,600 baud, 8 data bits, 1 stop bit, no parity



FTP Support

To access our FTP site, log on to our Internet host, `ftp.natinst.com`, as anonymous and use your Internet address, such as `joesmith@anywhere.com`, as your password. The support files and documents are located in the `/support` directories.



Fax-on-Demand Support

Fax-on-Demand is a 24-hour information retrieval system containing a library of documents on a wide range of technical information. You can access Fax-on-Demand from a touch-tone telephone at (512) 418-1111.



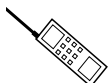
E-Mail Support (currently U.S. only)

You can submit technical support questions to the applications engineering team through e-mail at the Internet address listed below. Remember to include your name, address, and phone number so we can contact you with solutions and suggestions.

support@natinst.com

Telephone and Fax Support

National Instruments has branch offices all over the world. Use the list below to find the technical support number for your country. If there is no National Instruments office in your country, contact the source from which you purchased your software to obtain support.



Telephone



Fax

Australia	03 9879 5166	03 9879 6277
Austria	0662 45 79 90 0	0662 45 79 90 19
Belgium	02 757 00 20	02 757 03 11
Canada (Ontario)	905 785 0085	905 785 0086
Canada (Quebec)	514 694 8521	514 694 4399
Denmark	45 76 26 00	45 76 26 02
Finland	09 725 725 11	09 725 725 55
France	01 48 14 24 24	01 48 14 24 14
Germany	089 741 31 30	089 714 60 35
Hong Kong	2645 3186	2686 8505
Israel	03 5734815	03 5734816
Italy	02 413091	02 41309215
Japan	03 5472 2970	03 5472 2977
Korea	02 596 7456	02 596 7455
Mexico	5 520 2635	5 520 3282
Netherlands	0348 433466	0348 430673
Norway	32 84 84 00	32 84 86 00
Singapore	2265886	2265887
Spain	91 640 0085	91 640 0533
Sweden	08 730 49 70	08 730 43 70
Switzerland	056 200 51 51	056 200 51 55
Taiwan	02 377 1200	02 737 4644
United States	512 795 8248	512 794 5678
United Kingdom	01635 523545	01635 523154

Technical Support Form

Photocopy this form and update it each time you make changes to your software or hardware, and use the completed copy of this form as a reference for your current configuration. Completing this form accurately before contacting National Instruments for technical support helps our applications engineers answer your questions more efficiently.

If you are using any National Instruments hardware or software products related to this problem, include the configuration forms from their user manuals. Include additional pages if necessary.

Name _____

Company _____

Address _____

Fax (____) _____ Phone (____) _____

Computer brand _____ Model _____ Processor _____

Operating system (include version number) _____

Clock speed _____MHz RAM _____MB Display adapter _____

Mouse ____yes ____no Other adapters installed _____

Hard disk capacity _____MB Brand _____

Instruments used _____

National Instruments hardware product model _____ Revision _____

Configuration _____

National Instruments software product _____ Version _____

Configuration _____

The problem is: _____

List any error messages: _____

The following steps reproduce the problem: _____

GPIB-SCSI-A Hardware and Software Configuration Form

Record the settings and revisions of your hardware and software on the line to the right of each item. Complete a new copy of this form each time you revise your software or hardware configuration, and use this form as a reference for your current configuration. Completing this form accurately before contacting National Instruments for technical support helps our applications engineers answer your questions more efficiently.

National Instruments Products

GPIB-SCSI-A model and revision number _____

NI-488.2 software version number of disk _____

SW1 switch setting _____

SW2 switch setting _____

SCSI terminator installed on rear panel (yes or no) _____

Other Products

Programming language and version number _____

Computer make and model _____

Memory capacity on computer _____

Clock frequency or speed _____

Operating system version _____

Number of GPIB devices on bus _____

Other hardware devices in system _____

Type of monitor _____

Documentation Comment Form

National Instruments encourages you to comment on the documentation supplied with our products. This information helps us provide quality products to meet your needs.

Title: *Getting Started with Your GPIB-SCSI-A and the NI-488.2™ Software for MacOS*

Edition Date: July 1997

Part Number: 320468C-01

Please comment on the completeness, clarity, and organization of the manual.

If you find errors in the manual, please record the page numbers and describe the errors.

Thank you for your help.

Name

Title

Company

Address

Phone (____)

 Fax (____)

Mail to: Technical Publications
National Instruments Corporation
6504 Bridge Point Parkway
Austin, TX 78730-5039

Fax to: Technical Publications
National Instruments Corporation
(512) 794-5678

Prefix	Meanings	Value
n-	nano-	10^{-9}
μ -	micro-	10^{-6}
m-	milli-	10^{-3}
k-	kilo-	10^3
M-	mega-	10^6

°	degrees
%	percent
A	amperes
AC	alternating current
ANSI	American National Standards Institute
C	Celsius
CSA	Canadian Standards Association
DIP	dual inline package
DMA	direct memory access
EMI	electromagnetic interference
FCC	Federal Communications Commission
g	grams
GPIB	General Purpose Interface Bus
Hz	hertz
IEC	International Electrotechnical Commission
IEEE	Institute for Electrical and Electronic Engineers
in.	inches
lb	pounds
LED	light-emitting diode
m	meters
MB	megabytes of memory

Glossary

RAM	random-access memory
SCSI	Small Computer Systems Interface
UL	Underwriters Laboratories
V	volts
VAC	volts alternating current
VDC	volts direct current