

DEADLY/GAMES

U-BOAT

THE TYPE VII

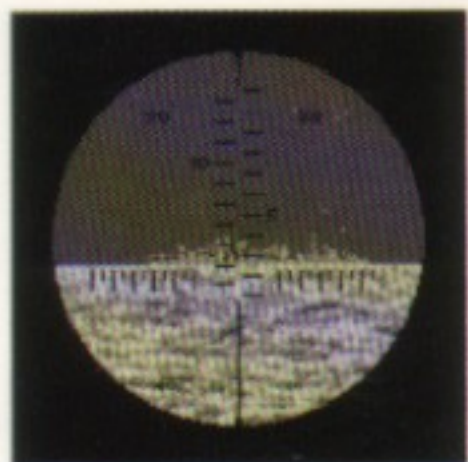
U-BOAT™

THE TYPE VII

AN AUTHENTIC RE-CREATION OF WWII'S LETHAL NORTH ATLANTIC HUNTER/KILLER



THE TYPE VII U-BOAT
AN AUTHENTIC
RE-CREATION OF
WWII'S LETHAL
NORTH ATLANTIC
HUNTER/KILLER



DEADLY/GAMES™

DEADLY GAMES

U-BOAT™

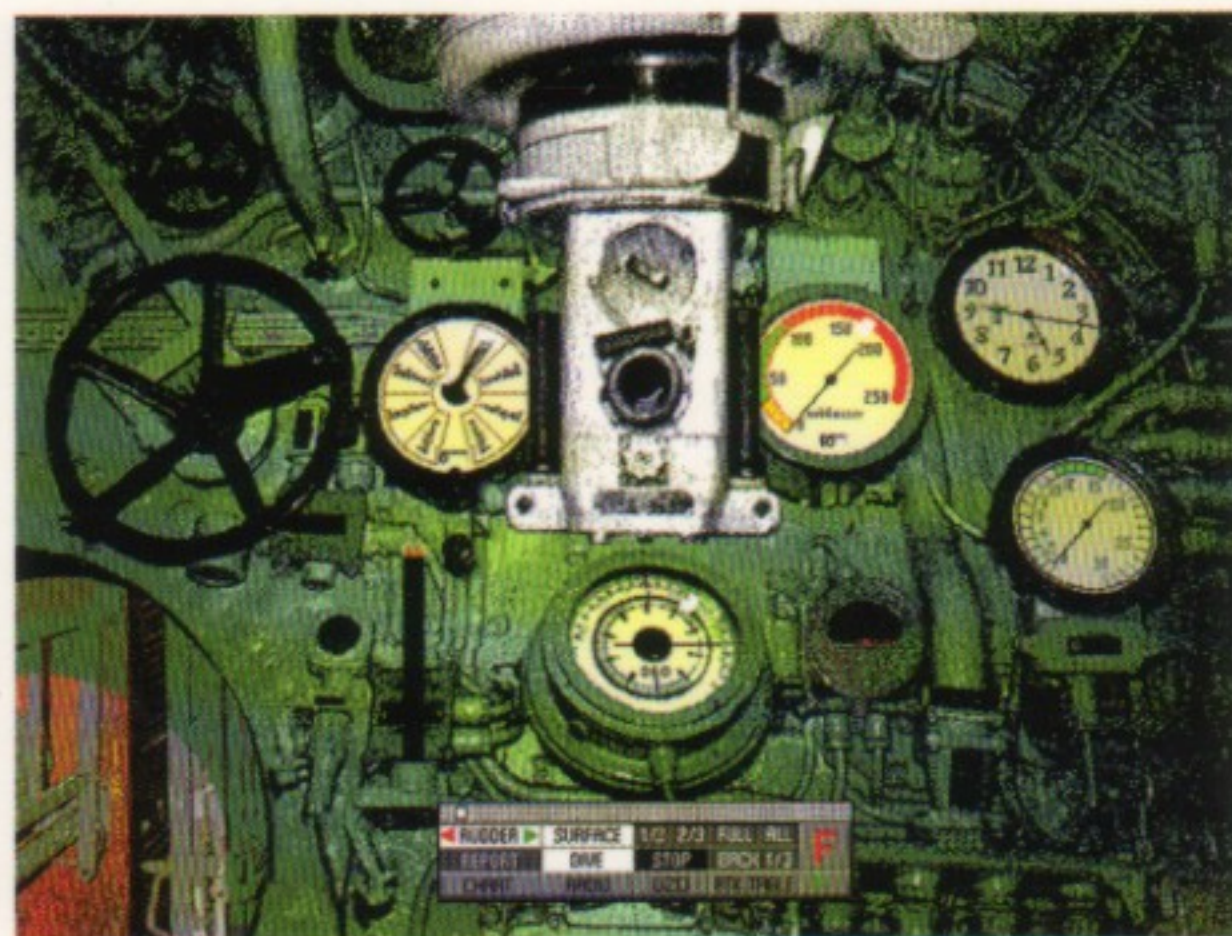
THE TYPE VII



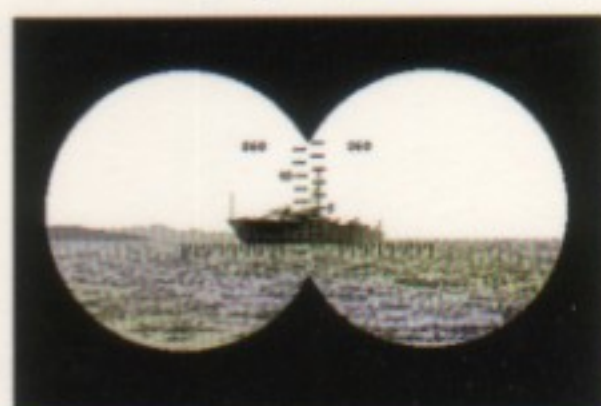
THE TYPE VII



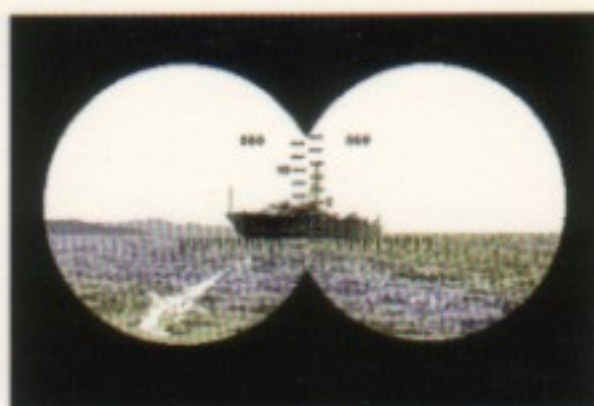
A lovely night topsides. Except you've got about 30 seconds to live.



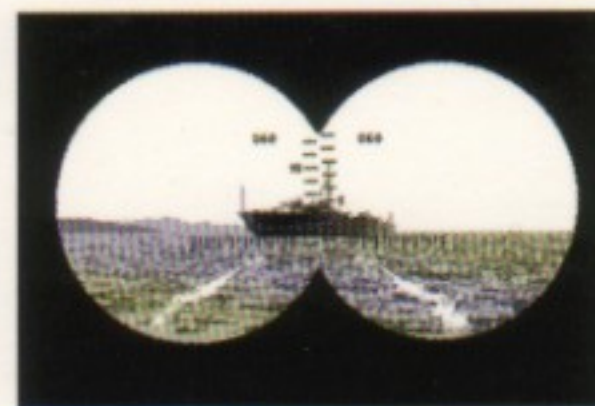
The nerve center (at 200 meters down and diving, it's your nerves).



Target in range...



tube one...Fier!

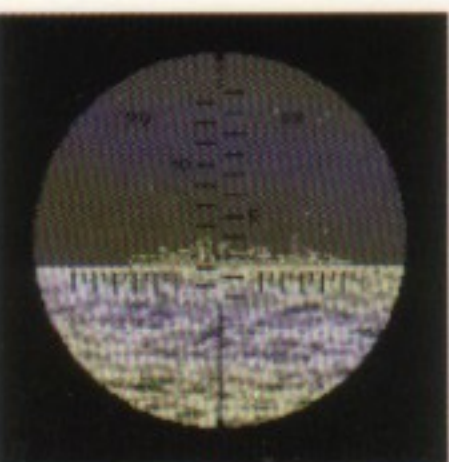


tube two...Fier!



It's not always this easy.

MACINTOSH
MIN. REQ: COLOR OR GRAY-
SCALE MONITOR, HARD
DRIVE, 4 MB OF RAM
RECOMMENDED:
LCIII OR BETTER



The U-boat's Attack Computer. The German's had computers in 1939? Yes they did.

WANTED: U-BOAT COMMANDER

If you've always dreamed of spending months at sea in the claustrophobic confines of a WWII submarine, this is for you. Bring along a good book to while away the off-watch hours. Bring also the nerve to withstand incessant barrages of depth charges rattling your teeth at 200 meters. Bring the intelligence not to venture a surface shot on a capitol ship in broad daylight. Bring the skill to navigate treacherous waters. Bring patience. Bring perseverance. Most of all bring a sense of fun — it is, after all, a game.

Rene Vidner

DEADLY GAMES™

INTELLIGENT GAMES FOR INTELLIGENT PEOPLE

U-BOAT™

THE TYPE VII U-BOAT © 1993 DEADLY GAMES



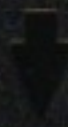
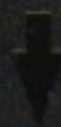
1

U-BOAT™

THE TYPE VII U-BOAT © 1993 DEADLY GAMES



2





TROUBLESHOOTING

If you have a lot of Extensions or Inits in your system folder, and are running on a 4 meg machine, you may experience memory problems running U-boat. Free up some memory by trying the following:

System 7.x

In the Memory Control Panel: Turn off Virtual Memory and set the Disk Cache to a smaller size (16K)
Restart your machine while holding down the Shift Key (this temporarily inhibits loading of memory robbing Extensions)

System 6.x

Turn off the Ram Cache in the General Control Panel.
Restart your machine without any INITs (ie. Suitcase, On Cue, QuickKeys, print spoolers etc. — drag the little fellers out of the System folder and restart).

If you still have problems call:

Deadly Games Tech Support: 516-628-1008

Deadly Games, 38 Wayaawi Avenue, Bayville, NY 11709-1015

If you have an AV or Power Mac,

you need the AV/Power Mac
version of this game.

Call 1-516-628-1008 right now.

(Have the serial number on your registration card handy.)