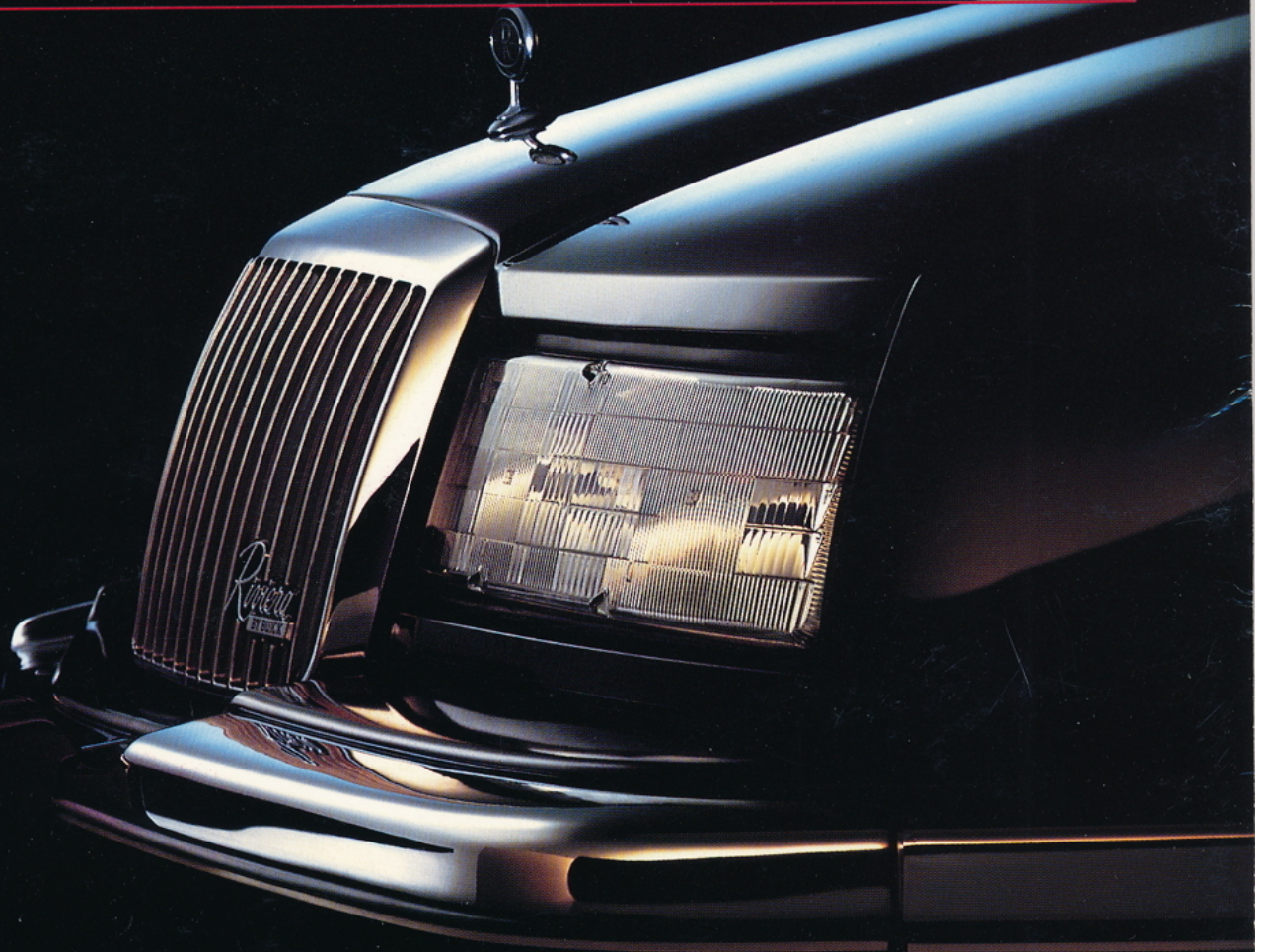


BUICK

DIMENSIONS

1989





Instructions under flap.

The 1989 Buick Dimensions User's Guide

1. PROGRAM CONTENTS

Buick Dimensions contains six sections as shown in the **Buick Dimensions Road Map** to the right. The **Table of Contents** is the focal point from which you may choose any of these sections.

- **Buick Presents**

Buick proudly features the Riviera and the Reatta. Check out the Electronic Control Center (ECC) - a computer system that replaces over 90 gauges and switches. While you're there, learn more about other advanced features of these foremost motorcars.

- **The Great American Road Show**

Take a good look at our entire model line for 1989. Investigate technical facts. Compare standard equipment and value option packages. You may even choose to learn more about each standard and optional feature. Use the included spreadsheet to determine pricing and payment information using your own financial data. Print a window sticker for the car of your choice. And to further help you with your car purchase decision, compare our car models with those of our competition.

- **Technology at Work**

Technology at work for your driving enjoyment and safety. DynaRide Suspension, the 3800 V6 Engine, our Anti-lock Brake System (ABS) and Remote Keyless Entry System are featured. Animated sequences illustrate the inner workings of each item.

- **SmartLeaseSM**

Leasing—the purchase alternative. Find out why leasing may be right for you. It's the "Smart Money" way to enjoy driving the Buick of your choice.

- **Buick Through the Years**

Spend a few minutes looking at events that shaped the present in this historical perspective of Buick and world events.

- **Buick Challenge**

Enjoy a few minutes or several hours testing your knowledge of 20th century historical facts with the Buick Challenge. Up to four players may compete in this exciting game.

Instructions

2. MACINTOSH

- a. **Hardware/System Requirements—**

To use the program you will need an Apple Macintosh, model 512E (800K internal floppy drive, 512K RAM) or newer and System 3.0 or higher. A second floppy drive or hard disk is recommended.

- b. **Software—**

- Your 1989 Buick Dimensions Package consists of one 3½" disk.

- c. **Specific—**

To start the program using a single floppy drive:

- Make sure your computer is on.
- Boot up from the **System Tools** disk shipped with your Macintosh or other floppy disk containing System 3.0 or higher.

Instructions continued on back flaps.

- Type **Buick** and press the **Enter** key.

To start the program using two 5¼" floppy disk drives:


- Make sure your computer is on and DOS is loaded.
- Put the disk marked **Reatta** into drive A and the disk marked **Riviera** into drive B.
- When the A:> prompt appears, type **Buick** and press the **Enter** key.
- Leave the disks in the drives until after you exit the program to DOS.

d. Program Instructions—

- You will use menus and function keys to gain access to all program sections and features.
- Information on navigating through the program is found on a menu bar across the top of each screen display. The following function keys are shown in this menu bar:
<F1> Help - Press **F1** to take you to a **Help** screen that further explains program navigation and function key usage. When in doubt, press **F1**.
<F2> Contents - Press **F2** to return to the **Table of Contents** menu from any point in the program. Remember, access to all portions of the program is gained through the **Table of Contents** menu.
<F3> Return - When shown in the menu bar, pressing **F3** will return you to the last menu from which you made a selection.
<Alt-X> Exit Program - Press and hold the **Alt** key while pressing the **X** key to exit the program completely. You will return to the DOS prompt.
- Screen specific instructions and the availability of pull down menus is found in an instruction bar across the bottom of each page. When listed, the **<F9>** key provides access to additional pull down menus. Also, when listed, the **<F10>** key controls animation sequences and other events as described on the screen.

e. Options—

- If you desire to use an attached mouse, be sure the mouse driver is loaded prior to beginning **Buick Dimensions**. Highlight available selections or instructions with the mouse cursor, then click with either button.
- An attached, parallel interface printer may be used to print a window sticker for the Buick of your choice by pressing **F10** while in the **Spreadsheet**. Be sure to check that your printer is on line before attempting to print from the **Buick Dimensions** program.
- **Buick Dimensions** may be loaded on your hard drive by using the standard DOS **Copy** command.
- The use of a mouse, printer, or hard drive is optional.
- Please consult the appropriate software/hardware manuals for information about installing a mouse driver, loading on a hard disk drive, or connecting printers/other peripherals to your computer.

© 1989 General Motors Corporation. All rights reserved. Buick and  are registered trademarks of General Motors Corporation.

- IBM is a registered trademark of International Business Machines.
- IMAGEWRITER & MACINTOSH are registered trademarks of Apple Computer, Inc.
- All prices in U.S. dollars.

- After the System has loaded, eject the System disk and insert the **Buick Dimensions** disk.
- Double click the **Buick** icon and follow the system prompts.

To start the program using dual floppy drives:

- Boot up from the **System Tools** disk shipped with your Macintosh or other floppy disk containing System 3.0 or higher.
- Insert the **Buick Dimensions** disk into the second drive.
- Double click the **Buick** icon.

To start the program using a hard disk drive:

- Boot from your hard disk's system.
- Insert the **Buick Dimensions** disk into a floppy drive.
- Double click the **Buick** icon.

d. Program Instructions—

Buick Dimensions uses four icons to navigate through the program. These icons are located in a title bar directly below the menu bar.



- Clicking the **Buick** icon returns you to the **Table of Contents** screen from any point in the program. Remember, all portions of the program are accessed through the **Table of Contents** screen.
- Clicking the **back arrow**, if shown, returns you to the last screen viewed.
- Clicking the **diamond**, if shown, returns you to the beginning of the current section.
- Clicking the **forward arrow**, if shown, advances you to the next program screen.

e. Options—

The **Window Sticker** for the Buick of your choice may be printed on a Macintosh compatible printer by selecting **Print** from the **File** menu while in the **Spreadsheet**. On an ImageWriter I or II you may print any screen by holding down the **Command** and **Shift** keys while typing number **4**.

3. IBM/COMPATIBLE

a. Hardware/System Requirements—

To use the program you will need an IBM PC, XT, AT, PS/2 computer or compatible with a minimum of 512K RAM, a monochrome or color graphics adapter, and DOS 2.0 or greater.

b. Software—

Your 1989 Buick Dimensions Package consists of two 5¼" disks or one 3½" disk.

c. Specific—

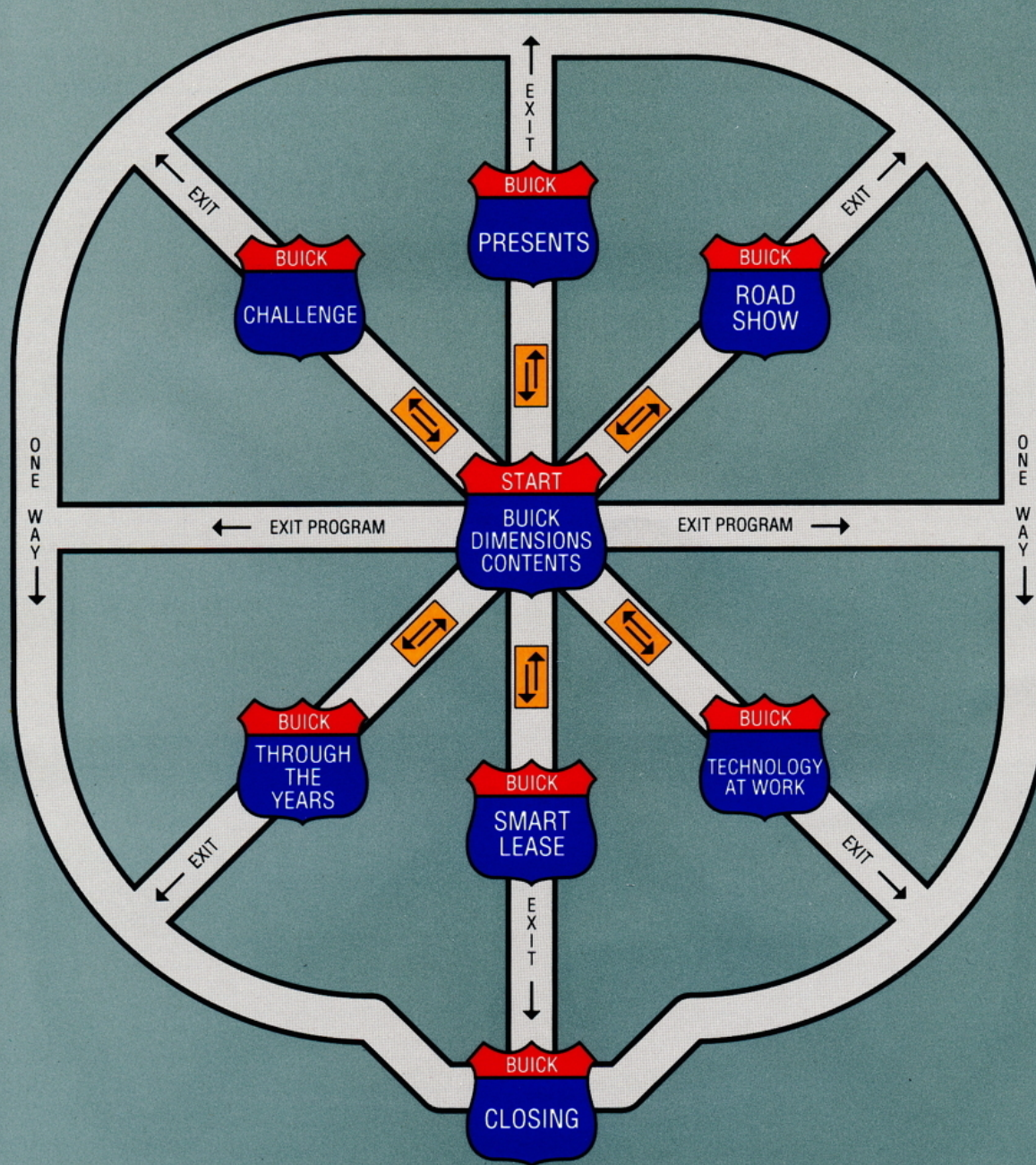
To start the program using a single 5¼" floppy disk drive:

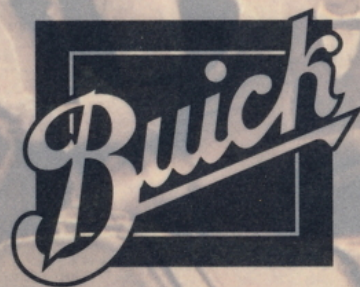
- Make sure your computer is on and DOS is loaded.
- When the A:> prompt appears, insert the disk marked **Reatta** into drive A.
- Type **Buick** and press the **Enter** key.
- The program will automatically tell you when to insert the disk marked **Riviera** as well as any other necessary disk changes.

To start the program using a single 3½" floppy disk drive:

- Make sure your computer is on and DOS is loaded.
- When the A:> prompt appears, insert the **Buick Dimensions** disk.

Buick Dimensions Road Map





The day everything changed.

The horse was more than sleek flanks, flaring nostrils and sinewy beauty. It represented a way of life. It was the status quo.

Ah, but the car. It was simply a machine trying to shoulder its way into a lifestyle that was still not completely at ease with machines.

There had to be a confrontation.
The machine had to be put in its place.
And so in some unremembered pasture,

on some unremembered day, the people lined up to watch some unremembered horse defend their way of life.

What they saw was history.
It didn't matter that the car had won.
The mere fact that it was there was a victory.

The automobile had arrived. And the technology and tempo of an entire country—indeed, the entire world—had changed forever.



Today, it takes a special breed of car to command the Great American Road. This year, Buick celebrates its 86th anniversary by offering automobiles that are designed for exhilarating driving, luxury without ostentation, and to fulfill the proud assertion: The Great American Road belongs to Buick.

Out on the Great American Road it takes a singular breed of automobile to smooth the rough edges off a less than perfect world. Buick, the Premium American Motorcar, is specifically created, and uniquely qualified, to master the challenges of today's most demanding driving conditions. Buicks are powerful, substantial, distinctively styled, mature, and perhaps most important of all—comfortable.

Today, the Great American Road, indeed, belongs to Buick!

Smooth control.

DynaRide suspension. Buicks have always been famous for their smooth ride. Now, Buick's exclusive DynaRide suspension is engineered to comfort you on any road surface, yet provide crisp cornering and precise handling control as well. Through the use of deflected-disc valving in the shock absorbers, DynaRide is calibrated so it actually adjusts itself to

changing driving conditions as you encounter them.

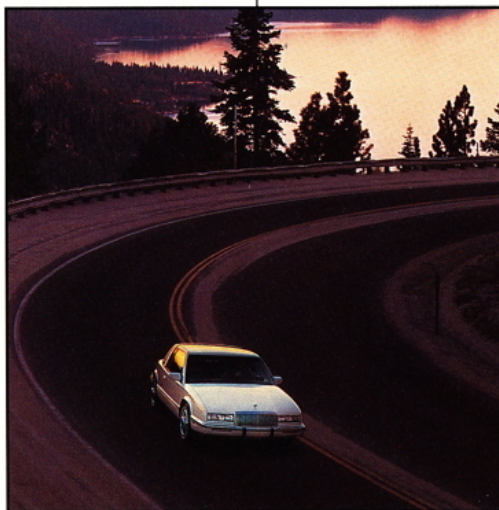
Reatta. Buick's premium American 2-seater.

It's a unique fusion of sports-car exhilaration and sumptuous surroundings. As might be expected, Reatta is fully equipped: ■ 165-horsepower 3800 V-6 engine with sequential-port fuel injection ■ 6-way power leather bucket seats ■ 4-speed automatic transmis-

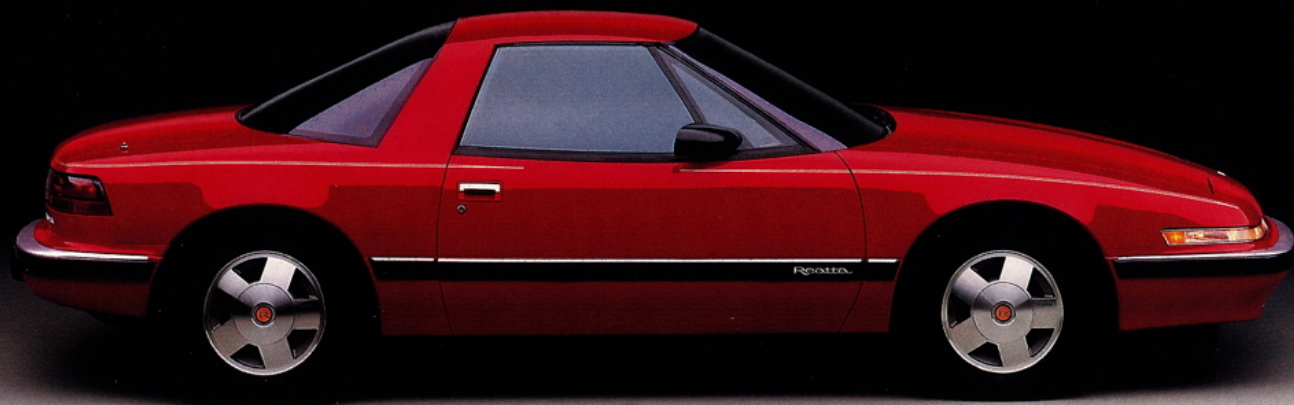
sion with overdrive ■ 4-wheel anti-lock brake system (ABS) ■ 4-wheel independent suspension ■ Electronic Control Center with full automatic instrumentation ■ Crafted to exacting standards at the specially created Reatta Craft Centre.

Riviera. It's a classic all over again. Its styling is totally new, yet you recognize it immediately. It could

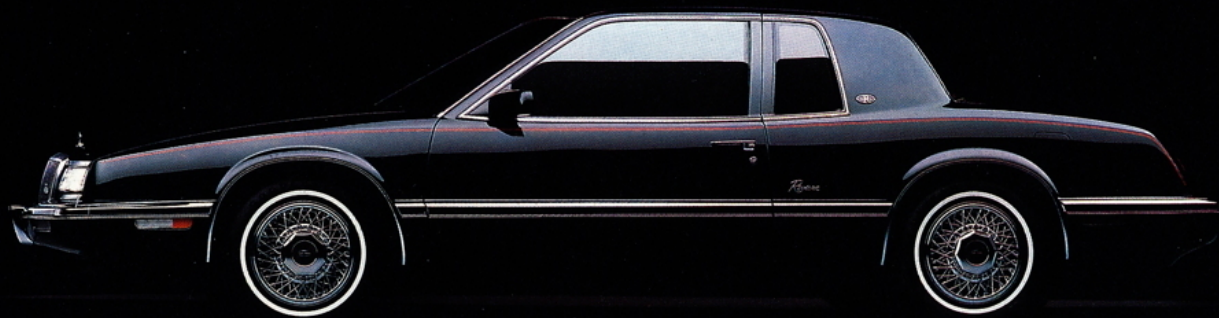
only be the Riviera. It is noticeably longer and very well equipped: ■ 165-horsepower 3800 V-6 engine with sequential-port fuel injection ■ 4-speed automatic transmission with overdrive ■ 4-wheel independent DynaRide suspension ■ 4-wheel power disc brakes ■ Air conditioning ■ Electronic Control Center ■ 6-way power driver's seat. A new remote radio Keyless Entry System and an integral cellular telephone are available.



Reatta



Riviera



Powerful. The 3800 V-6 Engine.

Powerful and smooth are good words to describe the 3800 V-6 engine found in Reatta, Riviera, Electra, Park Avenue and LeSabre. This engine has a counter-rotating balance shaft, designed to eliminate vibrations. The 3800 V-6 delivers responsive, reassuring performance.

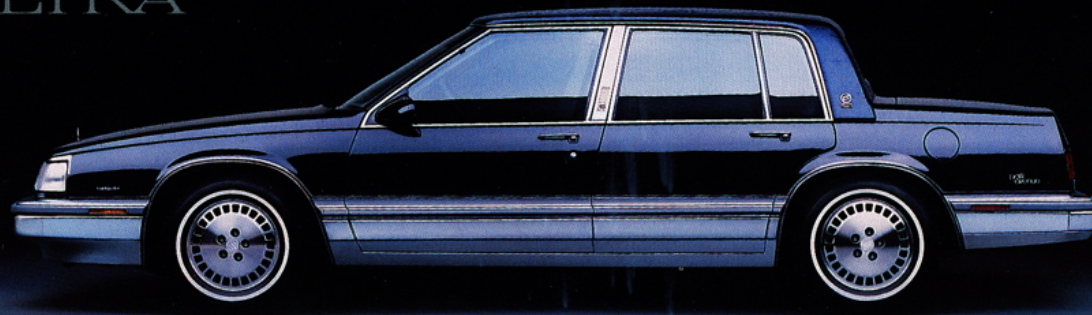
This silky smooth V-6 delivers a powerful 165 horsepower. That is more than some larger-displacement V-8 engines can muster. Its 210 ft-lbs of torque allow you to take prompt advantage of opportunities for expressway merging or passing on a two-lane road.

Electra, Park Avenue and Ultra. The ultimate expression of the 6-passenger luxury sedan. Whether taming the urban tangle or cruising to your favorite mountain retreat, the Electra exudes elegance, comfort and confidence—a sense of serenity. The

standard for luxurious, smooth-riding American sedans has been set by the newest member of the Electra family, the Park Avenue Ultra. Featuring: ■ 165-horsepower 3800 V-6 engine with sequential-port fuel injection ■ 4-wheel independent DynaRide suspension ■ All-leather seats ■ 20-way power front seats ■ Burlled-elm trim on doors and instrument panel ■ And more.

LeSabre. Full size room, comfort and convenience. Offering a time-honored reputation for comfort, spaciousness, distinctive styling, and power, LeSabre is a great value for today's Great American family car buyers. It's everything you would expect in a prestigious full-size Buick, including a long list of standard features: ■ 165-horsepower 3800 V-6 engine with sequential-port fuel injection ■ 4-wheel independent DynaRide suspension ■ Automatic transmission with overdrive ■ Air conditioning ■ AM-FM stereo

PARK AVENUE
ULTRA



LE SABRE



radio ■ Tilt steering column ■ 16.4 cubic feet of trunk space.

Regal. In every way. Contemporary and stylish on the outside, spacious on the inside, Regal lives up to Buick's reputation for providing premium levels of style, comfort and value.

In just one short year, Regal has become one of the fastest-selling Buicks

on the American road. And with good reason, when it's put together like this:

■ 2.8-litre V-6 engine with multi-port fuel injection ■ 4-wheel independent suspension ■ 4-wheel power disc brakes ■ Front-wheel drive ■ Air conditioning ■ Automatic transmission with overdrive ■ Power steering with tilt steering column ■ Reclining cloth-covered seats.

REGAL



Welcome to the next Century.

The Century Sedan is more aerodynamic on the outside, more comfortable on the inside and smoother on the road. All Century models are powered by engines that respond briskly to the driver's command. The standard 2.5-litre Tech IV engine is a strong but quiet 4-cylinder engine with electronic fuel injection and balance shaft. An Electronic Control

Module monitors road and engine conditions and helps meter the proper air/fuel mixture for any driving situation.

In every detail, the new Century is tasteful and refined: ■ New optional 160-horsepower 3300 V-6 engine ■ DynaRide suspension ■ Automatic transmission ■ Power steering ■ Front disc brakes ■ 6-passenger roominess and 16.2-cubic-foot trunk ■ AM-FM stereo radio.



Skylark. A little limousine for the price of a little car. Skylark is as distinctive in look as it is generous in appointment. And for all the technology of its front-wheel drive and fuel-injected engine, there is a maturity of style that says this is first and foremost a Buick. And a very powerful Buick at that. Power options include the 150-horsepower Quad 4 and the 160-horsepower

3300 V-6.

Because it's a Buick, Skylark offers room and comfort for five, a smooth, quiet ride and a long list of standard equipment:

- Buick's DynaRide suspension
- Automatic transmission
- Analog instrument cluster
- Reclining split-bench front seat
- Power front disc/rear drum brakes
- Power steering
- AM-FM stereo radio
- And more.

SKYLARK



Skyhawk. Stylish value. Buick's Skyhawk offers you a practical, well-equipped fun-to-drive compact that is a cut above others in its class. As befits a Buick, each Skyhawk carries a generous amount of standard equipment and each enjoys the benefits of technology that

make driving a pleasure. Skyhawks feature: ■ 2.0 litre L-4 engine with electronic fuel injection ■ 5-speed manual transmission ■ DynaRide suspension ■ A new upgraded acoustical insulation package ■ Power front disc/rear drum brakes ■ Power steering ■ And more.

SKYHAWK



Wagons. What an American wagon should be.

Buick wagons offer discerning owners all the comfort, quietness and substance of a premium Buick motorcar combined with the spaciousness and utility of a wagon. ■

The Electra Estate Wagon offers exceptional luxury, and is, quite simply, the industry's ultimate full-size wagon ■ LeSabre Estate

Wagon is the Great American full-size wagon with a generous combination of luxury, comfort and practicality ■

Century Wagon, with its front-wheel drive and large capacity, is a practical solution to the challenge of cargo-carrying ■ The Skyhawk Wagon

has comfortable seating for five people, and offers more than 60 cubic feet of useful cargo space. Buick's full line of wagons are as at home in the busiest shopping center as they are on America's picturesque back roads.



You are invited to The Great American Road

Show. Check out today's Buicks in the comfort of your home or office with the enclosed Buick Dimensions program. We then invite you to visit your

Buick dealer for a test drive and put a new 1989 Buick on the Great American Road for yourself.





BUICK
PREMIUM AMERICAN
MOTORCARS





Thank you for your interest in Buick

To show our appreciation, there's a

**SOFTWARE CERTIFICATE
ENCLOSED**



The Great American Road Belongs to Buick



BUICK MOTOR DIVISION, GENERAL MOTORS CORPORATION, FLINT, MI 48550

Dear Computer Owner:

Thank you for requesting the all new 1989 Buick Dimension Disk.

Information on your Disk is designed to help you make an intelligent purchase decision. It contains facts and figures on all 1989 Buick models, and even includes selected product information about our competitors.

A particularly interesting feature of the Disk you are about to review is that it provides detailed information about the newly redesigned Riviera and the exciting two-passenger Reatta.

To show our appreciation for your interest in Buick, we are also including a special **Software Certificate**. If you purchase a new and unused 1988 or 1989 Buick from February 1, 1989 through July 31, 1989 you may redeem your Software Certificate for a \$100 Software Purchase coupon. This \$100 Software Purchase coupon will be accompanied by a special Buick Software catalog. You may use your coupon to purchase \$100 worth of software from the Buick Software catalog or you may purchase more than \$100 worth of software from the Buick Software catalog and apply your \$100 software coupon towards that purchase. The total number of Software Certificates available is limited to the first 175,000 Buick Dimension Disks issued. Complete details are on the reverse side of the certificate.

Thank you again for test driving Buick by means of your Dimension Disk. After you've reviewed it, we invite you to visit your local Buick Dealer for an actual test drive.

Sincerely,

R.E. Coletta
General Sales
and Service Manager

CASH ALLOWANCE CERTIFICATE NUMBER: **B 497820**

Retain above portion.

Take portion below, including Certificate to any Buick Dealer.

Dealer Record: Save this portion for your reference.

Buick Dimension Disk

Software Certificate

Offer valid from February 15, 1989 through July 31, 1989*

Issued to _____
Address _____ Phone _____
VIN of vehicle purchased _____ Delivery date _____

Certificate Number:

B 497820

Certificate quantity limited to 175,000, nationally.

May be redeemed for a \$100 Software Purchase coupon if Software Certificate recipient purchases a new and unused 1988 or 1989 Buick model between February 1, 1989 and July 31, 1989. Software Certificate must be submitted by August 31, 1989. \$100 Software Purchase Coupon must be utilized by October 31, 1989.

Take this certificate to any Buick Dealer
Buick Dimension Disk

Software Certificate

Offer valid from February 15, 1989 through July 31, 1989*

Customer Name _____
Address _____
City _____ State _____ Zip _____

Dealer Code Number _____ Delivery Date _____
VIN of vehicle purchased _____
Dealer Firm Name _____
Address _____
City _____ State _____ Zip _____

Dealer Signature _____

Customer Signature _____

Your Certificate Number:

B 497820

Certificate quantity limited to 175,000. nationally.

May be redeemed for a \$100 Software Purchase coupon if Software Certificate recipient purchases a new and unused 1988 or 1989 Buick model between February 1, 1989 and July 31, 1989. Software Certificate must be submitted by August 31, 1989. \$100 Software Purchase Coupon must be utilized by October 31, 1989.

PROGRAM RULES

1. The recipient of a 1989 "Buick Dimension" disk package who purchases or leases an eligible new and unused 1988 or 1989 Buick between February 15, 1989 and July 31, 1989, may redeem their Software Certificate for a \$100 Software Purchase coupon and an accompanying Buick Software catalog.
2. There will be no cash refunds for any unused portion of the \$100 Software Purchase Coupon. Only software from the Buick Software Catalog may be received in exchange for the coupon.
3. The original Software Certificate must be presented to an authorized Buick dealer in the United States at the time of purchase or retail lease of an eligible new and unused 1988 or 1989 Buick.
4. Only the original Software Certificate will be honored. Mechanical reproduction or facsimiles are not valid. Certificate may be used by recipient or member of their immediate family.
5. This Software Certificate may be used in addition to any other consumer retail incentive program that is available.
6. Only one Software Certificate can be redeemed per retail purchase or retail lease of an eligible vehicle. Software Certificate must be submitted by August 31, 1989. \$100 Software Purchase coupon must be utilized by October 31, 1989.
7. Total number of Software Certificates available is limited to the first 175,000 Buick Dimension disks issued. Inquiries regarding this program should be made to the Buick Dimension Disk Center, 902 E. Hamilton Ave., Room #329, Flint, MI 48550.

Dealer: Forward this portion to Buick Dimension Disk Center for auditing

Include certificate number in the appropriate space when entering the retail report. Complete the following information and forward this Certificate to the Buick Dimension Disk Center, 902, E. Hamilton Ave., Room #329, Flint, MI 48550

Type of transaction: (Check one)

☐ Purchase ☐ GMAC Direct Lease Plan
Year, Make and Model of car TRADED (if none, N/A)

Optional Customer Profile:

Age _____ ☐ Male ☐ Female
Marital Status (Check one) ☐ Married ☐ Single ☐ Divorced
Education (Check one) ☐ Less than 12 years ☐ High School Graduate
☐ College Graduate ☐ Post Graduate Study

How many cars in family?

☐ one ☐ two ☐ three ☐ four, or more

Do you own a foreign car? ☐ yes ☐ no

Do you own your own home? ☐ yes ☐ no, ☐ lease ☐ rent

Annual household income: (Check one)

<input type="checkbox"/> \$15,000 to \$19,999	<input type="checkbox"/> \$35,000 to \$39,999	<input type="checkbox"/> \$55,000 to \$59,999
<input type="checkbox"/> \$20,000 to \$24,999	<input type="checkbox"/> \$40,000 to \$44,999	<input type="checkbox"/> \$60,000 to \$64,999
<input type="checkbox"/> \$25,000 to \$29,999	<input type="checkbox"/> \$45,000 to \$49,999	<input type="checkbox"/> \$65,000 to \$69,999
<input type="checkbox"/> \$30,000 to \$34,999	<input type="checkbox"/> \$50,000 to \$54,999	<input type="checkbox"/> \$70,000 plus